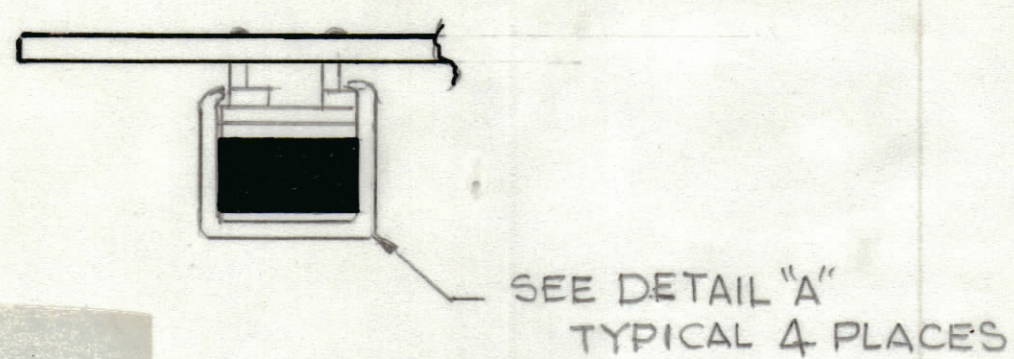
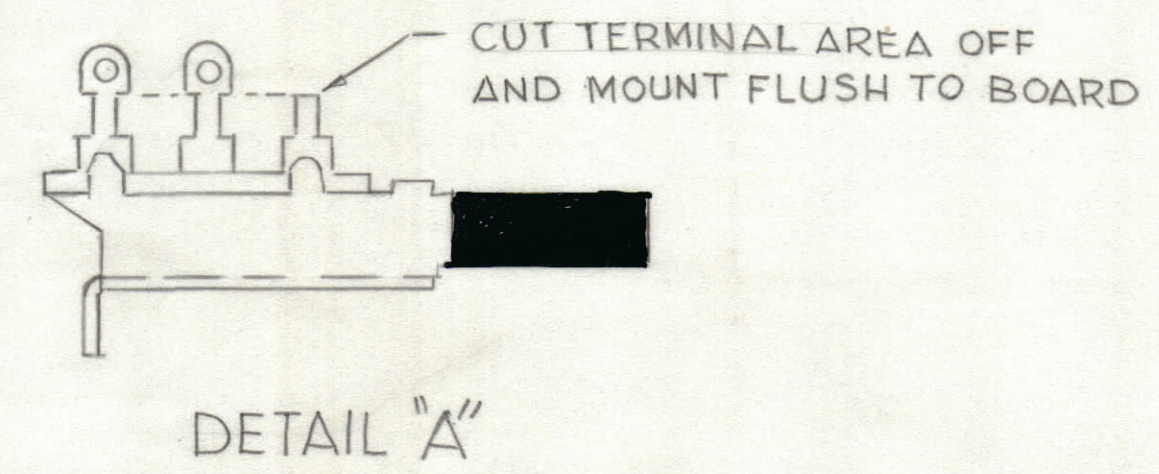
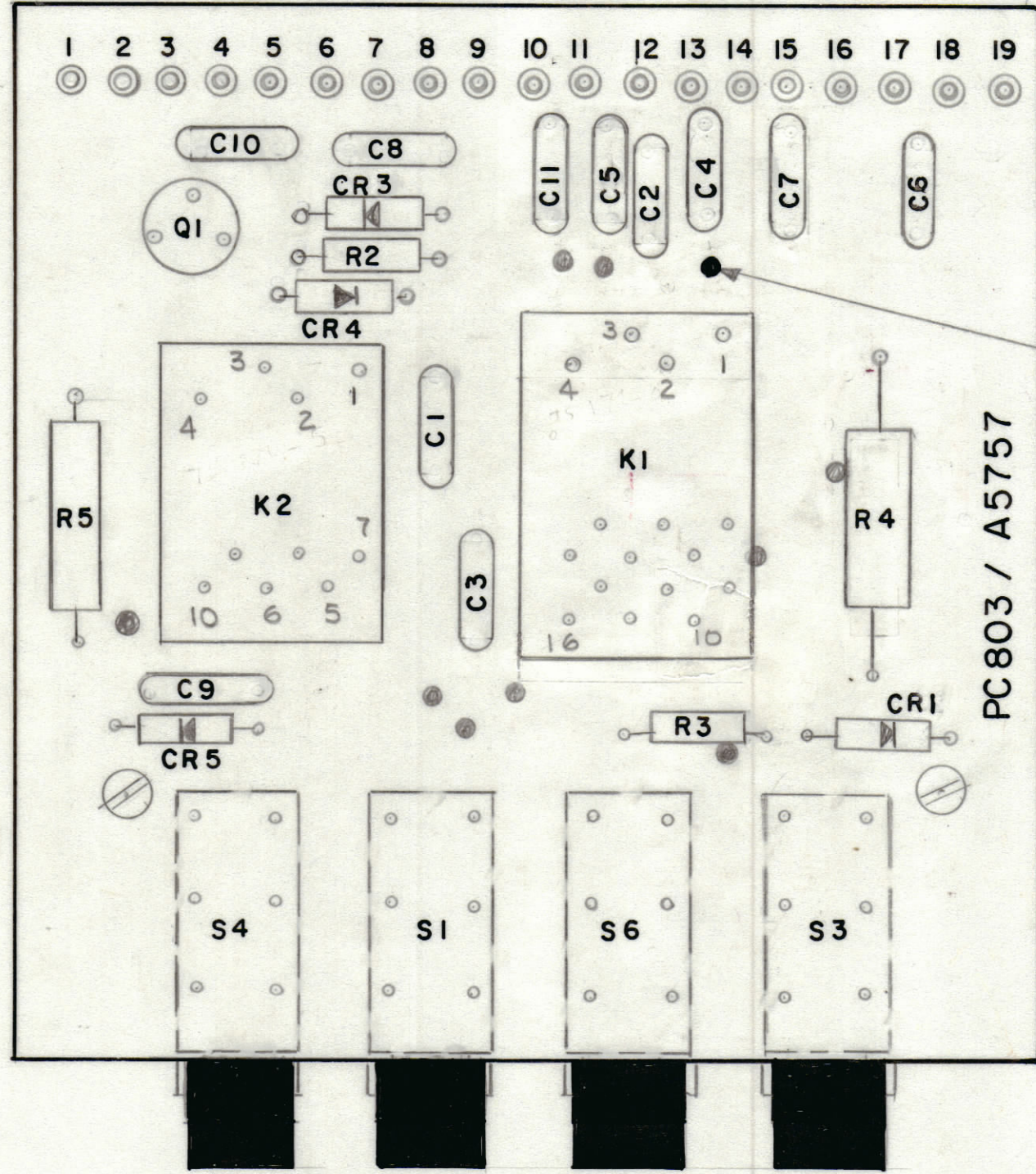


REVISIONS							
ZONE	LTR	DESCRIPTION	DATE	E.M.N.NO	DRAFT	CHKD	APPD
	Ø	ORIGINAL RELEASE FOR PRODUCTION	9-27-79		MAC		FB



- ASSEMBLY NOTES**
1. TO MOUNT COMPONENTS INSERT LEADS THROUGH HOLES.
 2. CAUTION, WHEN APPLYING HEAT & SOLDER TO LEAD & FOIL.
 3. CLEAN & INSPECT AS PER SPEC S676.
 4. FOR ELECTRICAL COMPONENT PART NUMBERS REFER TO NPL A
 5. USE SYMBOL NUMBERS FOR ASSY. REF.

QTY. REQ.	ITEM	PART NO.	DESCRIPTION	SYMBOL
X	4	BS 100	SOLDER, TIN ALLOY	
1	3	TS171-5	SOCKET, RELAY	
1	2	TS171-4	SOCKET, RELAY	
1	1	PC 803	PRINTED, CIRCUIT BOARD	

REF: CK

UNLESS OTHERWISE SPECIFIED DIMENSIONS ARE IN INCHES AND INCLUDE CHEMICALLY APPLIED OR PLATED FINISHES

TOLERANCES ON

DECIMALS	FRACTIONS
.X ± .05	± 1/64
.XX ± .01	ANGLES
.XXX ± .005	± 0° -30'

MATERIAL

FINISH

1	AX789/HFT	
QTY / UNIT	MODEL USED ON	ASS'Y NO.
APPLICATION		
CODE		
<small>NOTICE TO PERSONS RECEIVING THIS DRAWING</small> THE TECHNICAL MATERIEL CORPORATION claims proprietary right in the material disclosed hereon. This drawing is issued in confidence for engineering information only and may not be reproduced or used to manufacture anything shown hereon without permission from THE TECHNICAL MATERIEL CORPORATION to the user. This drawing is loaned for mutual assistance and is subject to recall at any time.		

LIST OF MATERIAL

THE TECHNICAL MATERIEL CORP.
MAMARONECK, NEW YORK

ASS'Y PRINTED CIRCUIT BD
CONTROL (Z101)

SIZE	CODE IDENT.NO.	DWG NO.	ISSUE
C	82679	A5757	Ø
SCALE	2:1	SHEET	OF

A5757