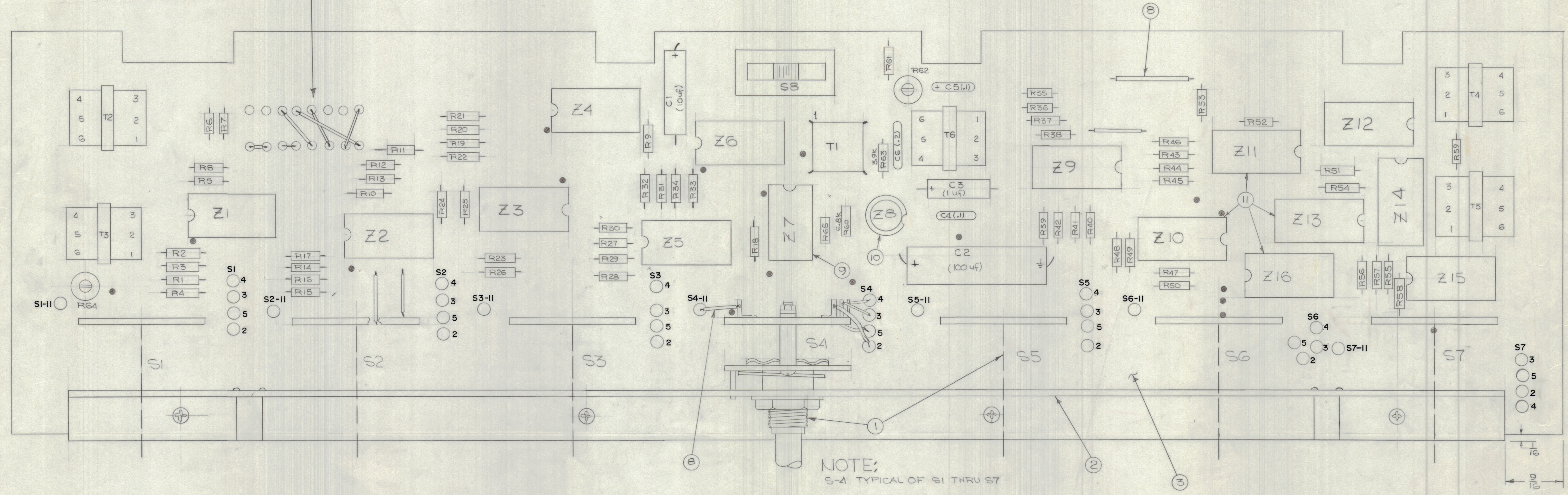
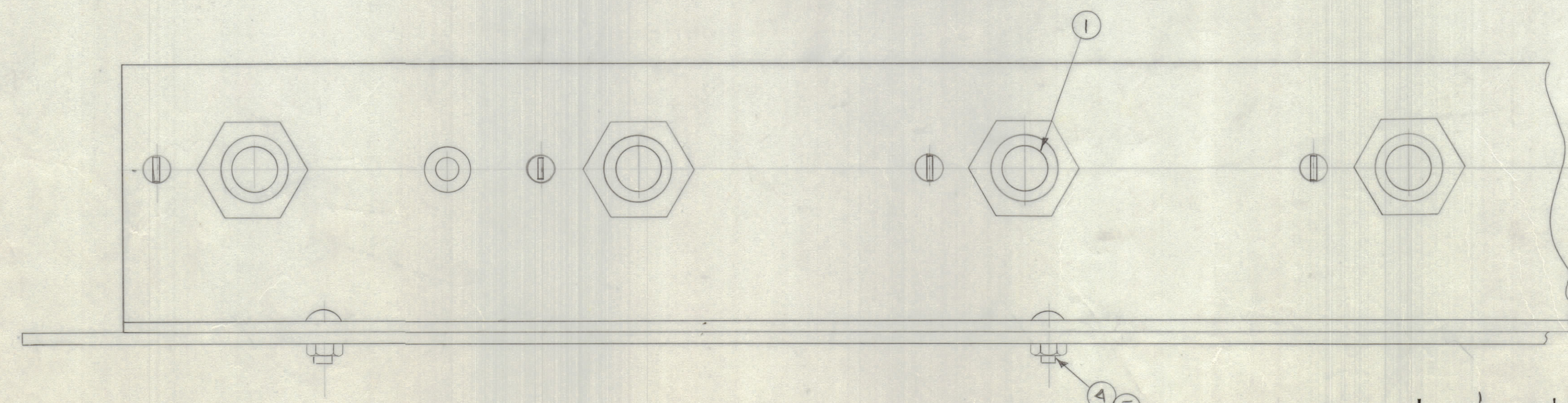


REVISIONS							
E.M.N.O	DRAFT	CHKD	ZONE	LTR	DESCRIPTION	DATE	APPROVED
					ORIGINAL RELEASE FOR PRODUCTION	1-7-80	SD

NOTE:
JUMPERS SHOWN FOR
STD. LEDEX CONTROL



NOTE:
S-4 TYPICAL OF S1 THRU S7



14	11	TS211-2	16 PIN SOCKET
1	10	TS213-2	12 PIN SOCKET (ROUND)
1	9	TS211-1	14 PIN SOCKET
2	8	PX104-3	SLEEVING
4	6	LWE0A	LOCK WASHER
4	5	NTH0440 BUB	NUT
4	4	SCBP0440-BUG	4-40 MACHINE SCREW
1	3	PC 789	BOARD
1	2	MSG836	BRACKET SW. & BOARD MTG
7	1	SW 576	SWITCH, ROTARY

QTY. REQ.	ITEM	PART NO.	DESCRIPTION	SYMBOL
-----------	------	----------	-------------	--------

LIST OF MATERIAL
THE TECHNICAL MATERIEL CORP.
MAMARONECK, NEW YORK
ASSEMBLY PC 789

UNLESS OTHERWISE SPECIFIED DIMENSIONS ARE IN INCHES AND INCLUDE CHEMICALLY APPLIED OR PLATED FINISHES		FINAL APPROVAL	DATE
TOLERANCES ON		MECH. DES.	DATE
DECIMALS	FRACTIONS	ELECT. DES.	DATE
.X ± .05	± 1/64	CHECKED	DATE
.XX ± .01	ANGLES	DRAWN	DATE
.XXX ± .005	± 0° - 30'	PH	12-15-77

RCST-1		AV5223	
QTY / UNIT	MODEL USED ON	ASS'Y NO.	
APPLICATION			
CODE			
MATERIAL			
FINISH			

NOTICE TO PERSONS RECEIVING THIS DRAWING
THE TECHNICAL MATERIEL CORPORATION claims proprietary right in the material disclosed herein. This drawing is issued in confidence for engineering information only and may not be reproduced or used to manufacture anything shown hereon without permission from THE TECHNICAL MATERIEL CORPORATION to the user. This drawing is loaned for mutual assistance and is subject to recall at any time.

SIZE	CODE IDENT NO.	DWG NO.	ISSUE
D	82679	A5727	1
SCALE			SHEET OF