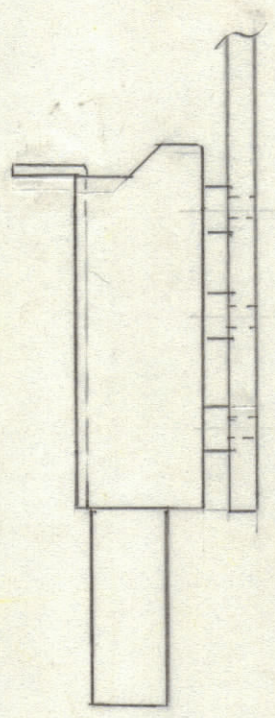
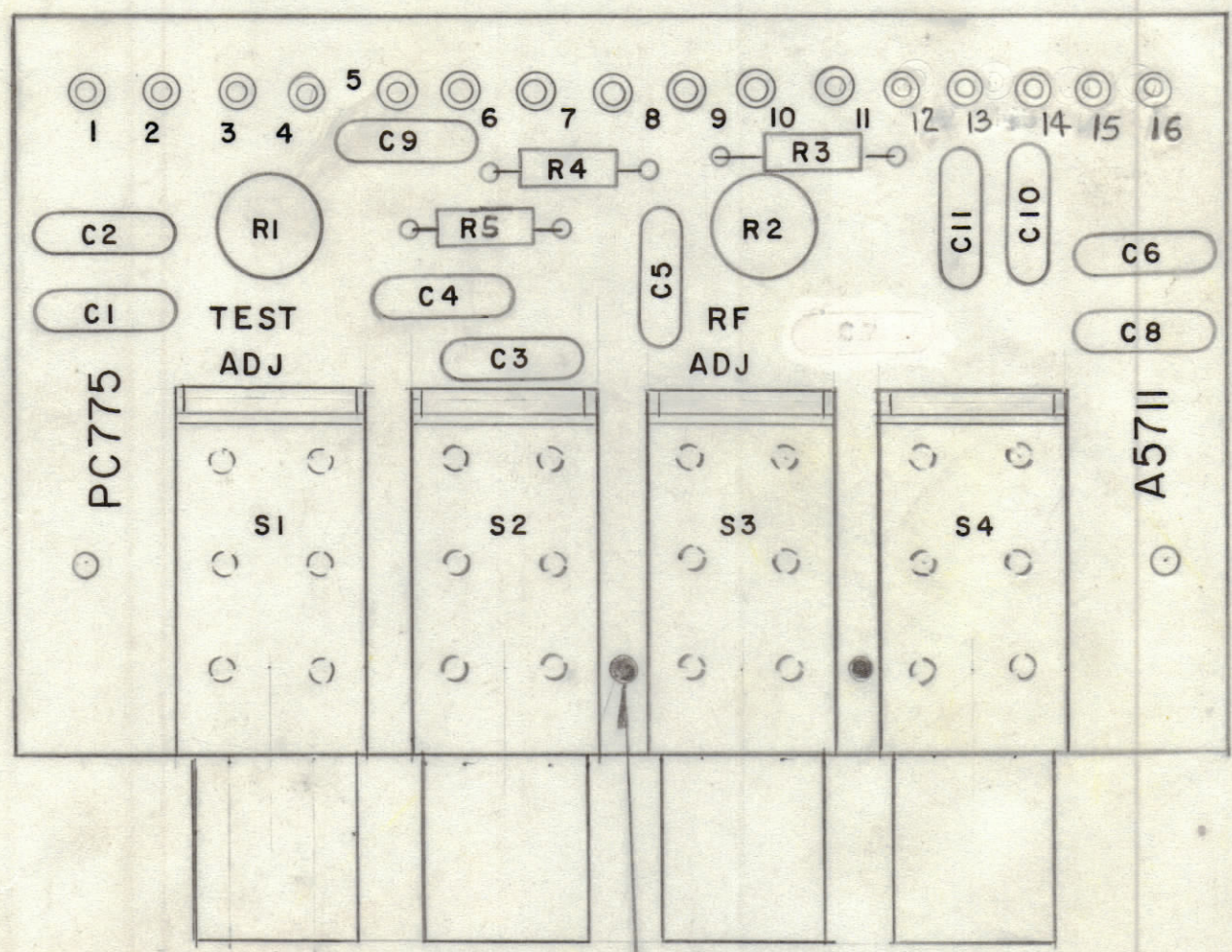


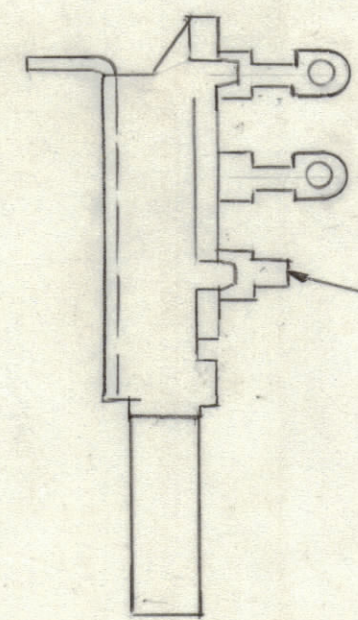
REVISIONS						
ZONE	LTR	DESCRIPTION	DATE	E.M.N.NO	DRAFT	CHKD
	XI	REVISED AS PER NEW SCHEMATIC	11-7-77			
	Ø	ORIG. RELEASE FOR PRODUCTION	5-8-81			



**ASSEMBLY NOTES**

1. TO MOUNT COMPONENTS INSERT LEADS THROUGH HOLES.
2. CAUTION, WHEN APPLYING HEAT & SOLDER TO LEAD & FOIL.
3. CLEAN & INSPECT AS PER SPEC S676.
4. FOR ELECTRICAL COMPONENT PART NUMBERS REFER TO NPL A5711
5. USE SYMBOL NUMBERS FOR ASSY. REF.

FILL WITH SOLDER



CUT TERMINAL AREA OFF, AND MOUNT FLUSH TO BOARD

REF: CK2165(SH 1)

QTY. REQ.	ITEM	PART NO.	DESCRIPTION	SYMBOL
X 2		BS 100	SOLDER TIN ALLOY	
1 1		PC 775	PRINTED CIRCUIT BD	

LIST OF MATERIAL

**THE TECHNICAL MATERIEL CORP.**  
MAMARONECK, NEW YORK

ASSY PRINTED CIRCUIT BD  
PUSH SWITCH CONTROL

1	MMX ( ) -2B	BMA535
QTY / UNIT	MODEL USED ON	ASS'Y NO.
APPLICATION		
CODE		
<small>NOTICE TO PERSONS RECEIVING THIS DRAWING</small> <small>THE TECHNICAL MATERIEL CORPORATION claims proprietary right in the material disclosed hereon. This drawing is issued in confidence for engineering information only and may not be reproduced or used to manufacture anything shown hereon without permission from THE TECHNICAL MATERIEL CORPORATION to the user. This drawing is loaned for mutual assistance and is subject to recall at any time.</small>		

UNLESS OTHERWISE SPECIFIED DIMENSIONS ARE IN INCHES AND INCLUDE CHEMICALLY APPLIED OR PLATED FINISHES	FINAL APPROVAL	DATE
	MECH. DES.	DATE
	ELECT. DES.	DATE
	CHECKED	DATE
TOLERANCES ON	DECIMALS	FRACTIONS
	.X ± .05	± 1/64
	.XX ± .01	ANGLES
	.XXX ± .005	± 0° -30'
MATERIAL		
FINISH		

SIZE	CODE IDENT.NO.	DWG NO.	ISSUE
C	82679	A5711	Ø
SCALE	SHEET		OF