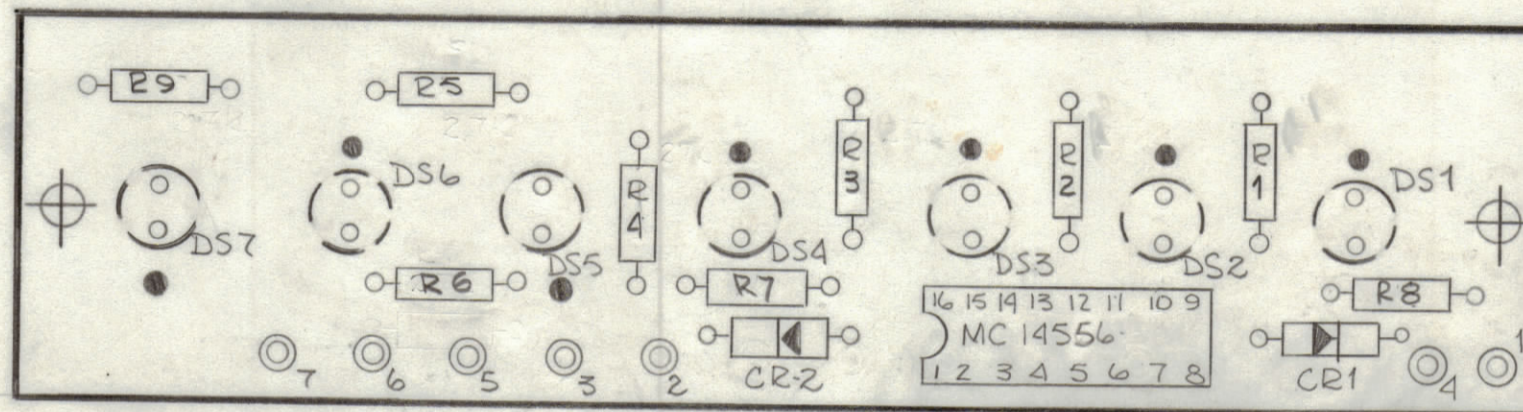
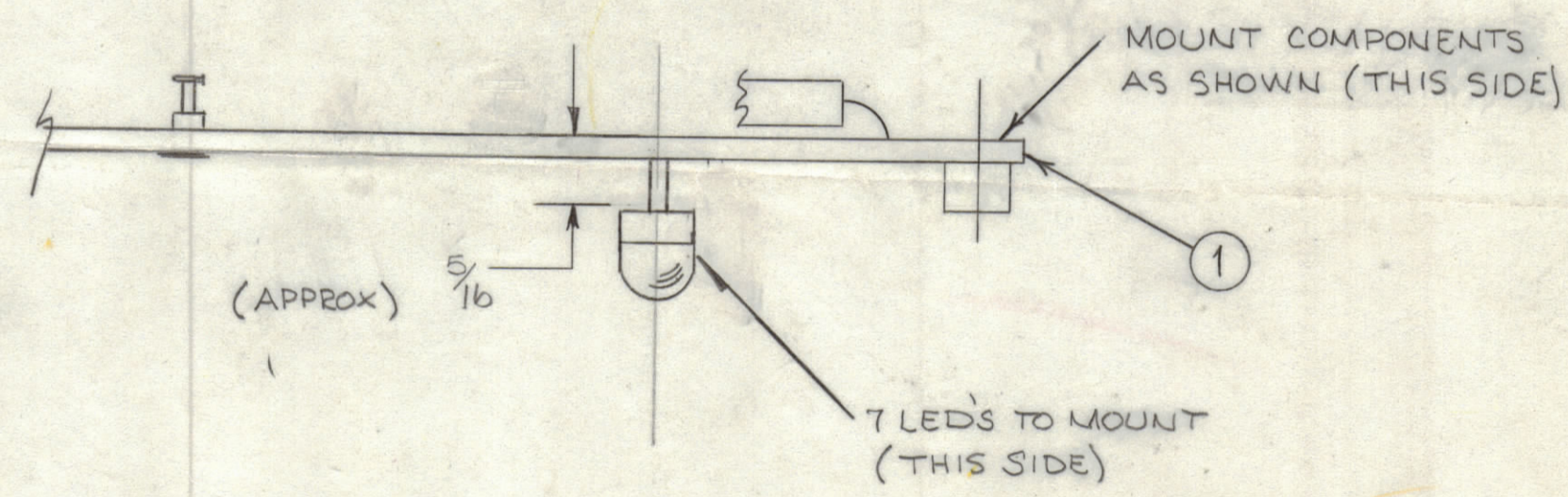


REVISIONS						
ZONE	LTR	DESCRIPTION	DATE	E.M.N.NO	DRAFT	CHKD APPD
	X1	COMPLETELY REVISED	9/30/77		PH	
	X2	REVISED & REDRAWN	1/31/78		RWS	



- ASSEMBLY NOTES**
1. TO MOUNT COMPONENTS INSERT LEADS THROUGH HOLES.
 2. CAUTION, WHEN APPLYING HEAT & SOLDER TO LEAD & FOIL.
 3. CLEAN & INSPECT AS PER SPEC S676.
 4. FOR ELECTRICAL COMPONENT PART NUMBERS REFER TO NPL A
 5. USE SYMBOL NUMBERS FOR ASSY. REF.



QTY. REQ.	ITEM	PART NO.	DESCRIPTION	SYMBOL
X	2	BS100	SOLDER TIN ALLOY	
1	1	PC 774	PRINTED CIRCUIT BOARD	

REF: CK

UNLESS OTHERWISE SPECIFIED DIMENSIONS ARE IN INCHES AND INCLUDE CHEMICALLY APPLIED OR PLATED FINISHES		FINAL APPROVAL	DATE
TOLERANCES ON DECIMALS FRACTIONS .X ± .05 ± 1/64 .XX ± .01 ANGLES .XXX ± .005 ± 0° -30'		MECH. DES.	DATE
		ELECT. DES.	DATE
		CHECKED	DATE
		DRAWN <i>RWS</i>	DATE 1/31/78

LIST OF MATERIAL			
THE TECHNICAL MATERIEL CORP. MAMARONECK, NEW YORK			
ASSY PRINTED CIRCUIT BD. INDICATORS			
SIZE	CODE IDENT. NO.	DWG NO.	ISSUE
C	82679	A5710	X ₂
SCALE 2:1			SHEET OF

1	MMX-()2B	
QTY / UNIT	MODEL USED ON	ASS'Y NO.
APPLICATION		
	CODE	
<small>NOTICE TO PERSONS RECEIVING THIS DRAWING</small> <small>THE TECHNICAL MATERIEL CORPORATION claims proprietary right in the material disclosed hereon. This drawing is issued in confidence for engineering information only and may not be reproduced or used to manufacture anything shown hereon without permission from THE TECHNICAL MATERIEL CORPORATION to the user. This drawing is loaned for mutual assistance and is subject to recall at any time.</small>		