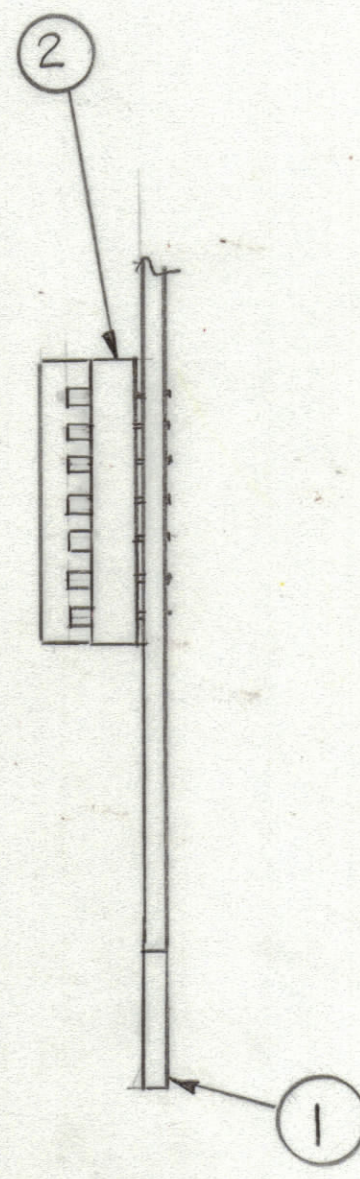
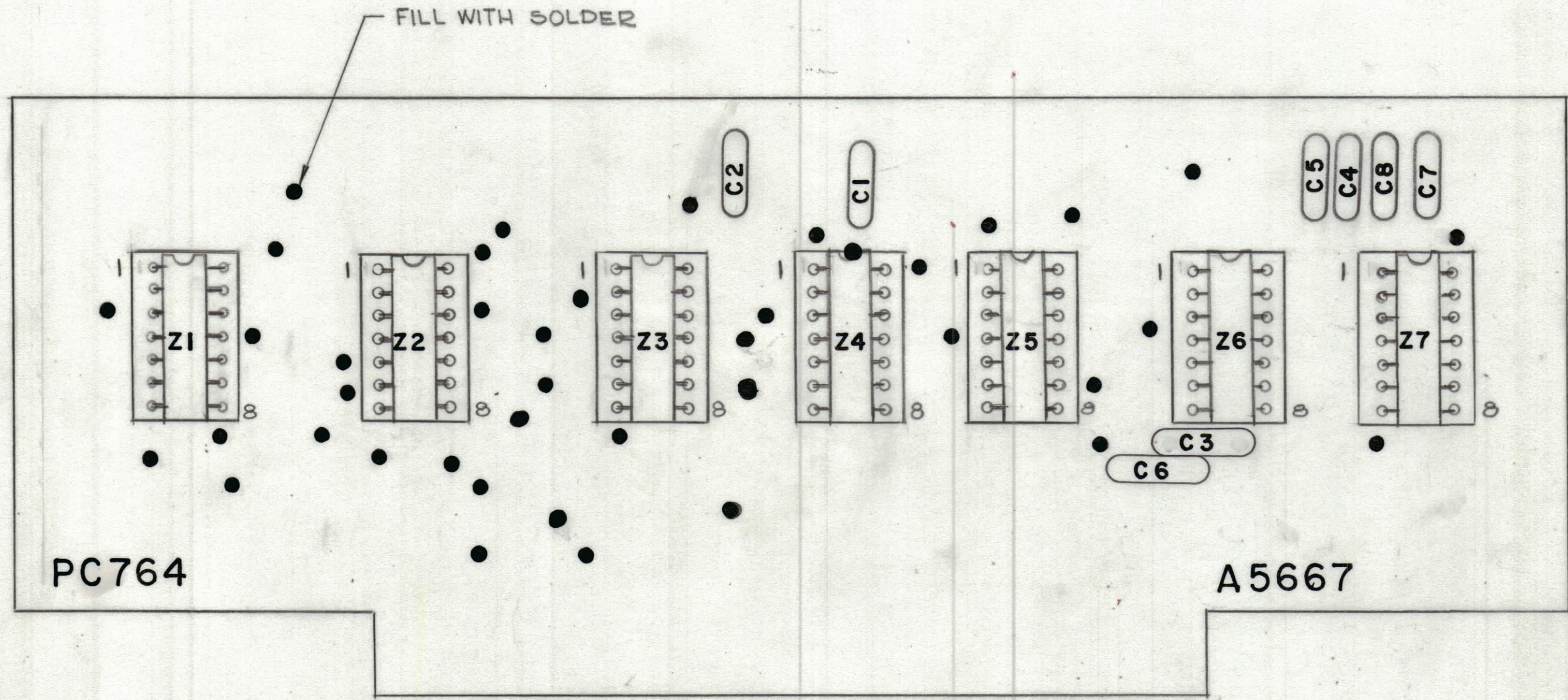


REVISIONS						
ZONE	LTR	DESCRIPTION	DATE	E.M.N.NO	DRAFT	CHKD APPD



ASSEMBLY NOTES

1. TO MOUNT COMPONENTS INSERT LEADS THROUGH HOLES.
2. CAUTION, WHEN APPLYING HEAT & SOLDER TO LEAD & FOIL.
3. CLEAN & INSPECT AS PER SPEC S676.
4. FOR ELECTRICAL COMPONENT PART NUMBERS REFER TO NPL A
5. USE SYMBOL NUMBERS FOR ASSY. REF.

REF: CK2156

QTY. REQ.	ITEM	PART NO.	DESCRIPTION	SYMBOL
X 3		BS 100	SOLDER, TIN ALLOY	
7 2		TS211-1	SOCKET	XZ1-XZ7
1 1		PC764	PRINTED CIRCUIT BD	

LIST OF MATERIAL

UNLESS OTHERWISE SPECIFIED DIMENSIONS ARE IN INCHES AND INCLUDE CHEMICALLY APPLIED OR PLATED FINISHES		FINAL APPROVAL	DATE	THE TECHNICAL MATERIEL CORP. MAMARONECK, NEW YORK ASSY PRINTED CIRCUIT BD. CHANNEL LOGIC	
TOLERANCES ON DECIMALS .X ± .05 .XX ± .01 .XXX ± .005 FRACTIONS ± 1/64 ANGLES ± 0° -30'		MECH. DES.	DATE		
		ELECT. DES.	DATE		
		CHECKED	DATE		
MATERIAL		DRAWN	G.D.L.	DATE	4-7-77
FINISH				SIZE	C
NOTICE TO PERSONS RECEIVING THIS DRAWING THE TECHNICAL MATERIEL CORPORATION claims proprietary right in the material disclosed hereon. This drawing is issued in confidence for engineering information only and may not be reproduced or used to manufacture anything shown hereon without permission from THE TECHNICAL MATERIEL CORPORATION to the user. This drawing is loaned for mutual assistance and is subject to recall at any time.				CODE IDENT.NO.	82679
				DWG NO.	A5667
				ISSUE	X
				SCALE	2:1
				SHEET	OF

1	AX5221	
QTY / UNIT	MODEL USED ON	ASS'Y NO.
APPLICATION		
	CODE	