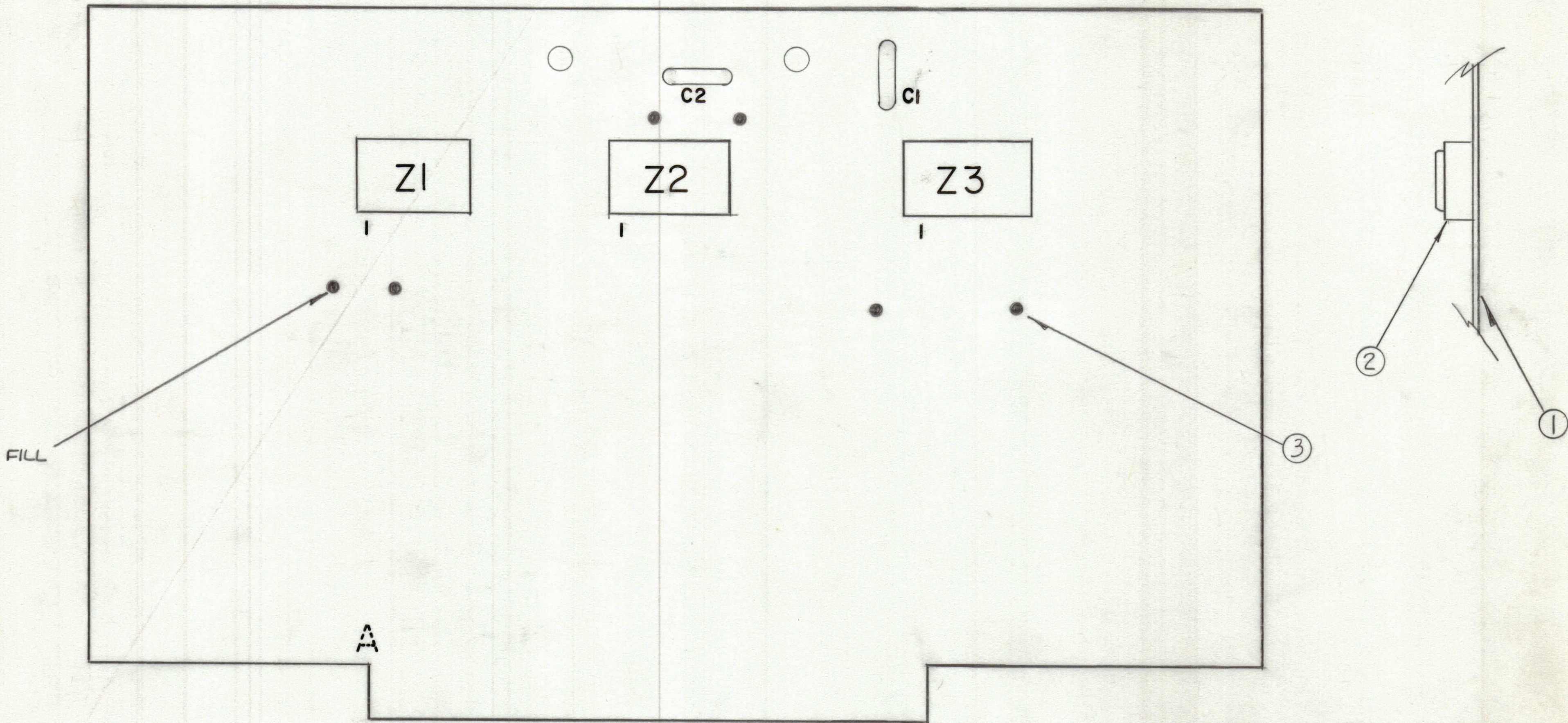


REVISIONS						
ZONE	LTR	DESCRIPTION	DATE	E.M.N.NO	DRAFT	CHKD APPD
	X1	COMPLETELY REDRAWN, REVISED	12-29-76		<i>[Signature]</i>	
	Ø	ORIGINAL RELEASE FOR PRODUCTION	3-9-77			*



ASSEMBLY NOTES

1. TO MOUNT COMPONENTS INSERT LEADS THROUGH HOLES.
2. CAUTION, WHEN APPLYING HEAT & SOLDER TO LEAD & FOIL.
3. CLEAN & INSPECT AS PER SPEC S676.
4. FOR ELECTRICAL COMPONENT PART NUMBERS REFER TO NPL A
5. USE SYMBOL NUMBERS FOR ASSY. REF.

QTY. REQ.	ITEM	PART NO.	DESCRIPTION	SYMBOL
X 3		BS100	SOLDER, TIN ALLOY	
3 2		T3211-1	SOCKET, 14 PIN LOW PROFILE	
1 1		PC754	PRINTED CIRCUIT Bd	

LIST OF MATERIAL

REF CK

UNLESS OTHERWISE SPECIFIED DIMENSIONS ARE IN INCHES AND INCLUDE CHEMICALLY APPLIED OR PLATED FINISHES

TOLERANCES ON	
DECIMALS	FRACTIONS
.X ± .05	± 1/64
.XX ± .01	ANGLES
.XXX ± .005	± 0° -30'

FINAL APPROVAL	DATE
<i>[Signature]</i>	2/29/77
MECH. DES.	DATE
<i>[Signature]</i>	12-12-76
ELECT. DES.	DATE
CHECKED	DATE
R 4220	2-17-77
DRAWN	DATE
<i>[Signature]</i>	12-29-76

THE TECHNICAL MATERIEL CORP.
MAMARONECK, NEW YORK

ASSEMBLY, P.C. Bd
LSB/USB CONTROL RDBK

1	ADC-5A	AX5190
QTY / UNIT	MODEL USED ON	ASS'Y NO.
	APPLICATION	
	CODE	
<p>NOTICE TO PERSONS RECEIVING THIS DRAWING</p> <p>THE TECHNICAL MATERIEL CORPORATION claims proprietary right in the material disclosed hereon. This drawing is issued in confidence for engineering information only and may not be reproduced or used to manufacture anything shown hereon without permission from THE TECHNICAL MATERIEL CORPORATION to the user. This drawing is loaned for mutual assistance and is subject to recall at any time.</p>		

SIZE	CODE IDENT.NO.	DWG NO.	ISSUE
C	82679	A5653	Ø
SCALE		SHEET	OF