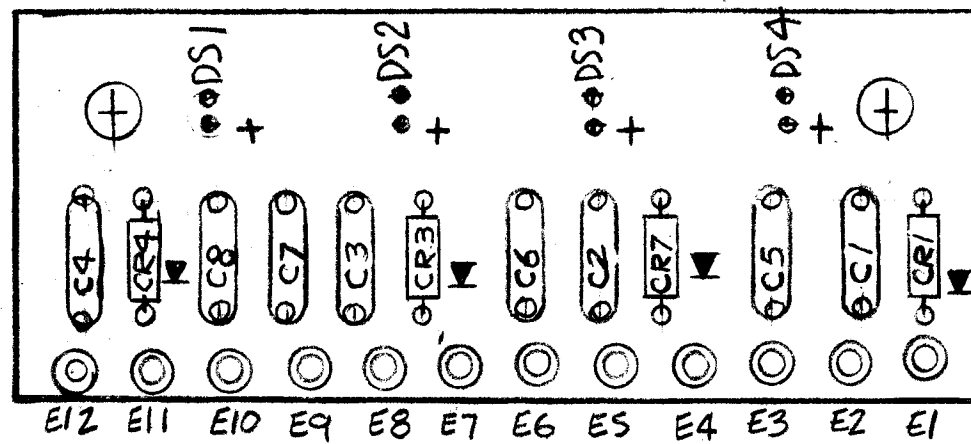
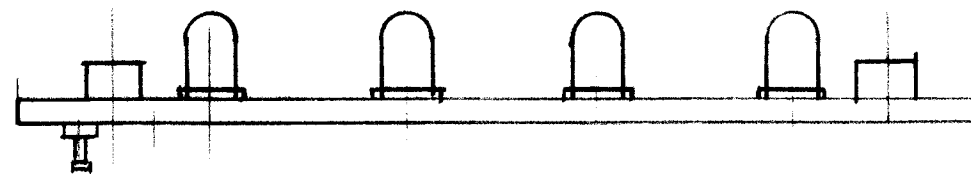


| REVISIONS | | | | | | | |
|------------|-------------|------|------|-----|---------------------------------|---------|----------|
| E.M.N. NO. | DRAFT | CHKD | ZONE | LTR | DESCRIPTION | DATE | APPROVED |
| | <i>HH</i> | | | | ENs Clarified | 11-3-76 | |
| | <i>R.V.</i> | | | Ø | ORIGINAL RELEASE FOR PRODUCTION | 1-26-77 | * |



(PC744)

ASSEMBLY NOTES

1. TO MOUNT COMPONENTS INSERT LEADS THROUGH HOLES.
2. CAUTION, WHEN APPLYING HEAT & SOLDER TO LEAD & FOIL.
3. CLEAN & INSPECT AS PER SPEC S676.
4. FOR ELECTRICAL COMPONENT PART NUMBERS REFER TO NPL A
5. USE SYMBOL NUMBERS FOR ASSY. REF.

(CK2130)

| REQ'D | ITEM | PART NUMBER | DESCRIPTION | SYM. |
|-------|------|-------------|-----------------------|------|
| X | 2 | BS100 | SOLDER TINA ALLOY | |
| 1 | 1 | PC744 | PRINTED CIRCUIT BOARD | |

LIST OF MATERIAL

| 1 | AX 5212 | GPTR-1KC |
|-------------|---------------|-----------|
| QTY / UNIT | MODEL USED ON | ASS'Y NO. |
| APPLICATION | | |
| CODE | | |

NOTICE TO PERSONS RECEIVING THIS DRAWING
 THE TECHNICAL MATERIEL CORPORATION claims proprietary right in the material disclosed hereon. This drawing is issued in confidence for engineering information only and may not be reproduced or used to manufacture anything shown hereon without permission from THE TECHNICAL MATERIEL CORPORATION to the user. This drawing is loaned for mutual assistance and is subject to recall at any time.

UNLESS OTHERWISE SPECIFIED DIMENSIONS ARE IN INCHES AND INCLUDE CHEMICALLY APPLIED OR PLATED FINISHES

| | |
|--------------------------|----------------------|
| FINAL APPROVAL <i>ES</i> | DATE <i>11/10/77</i> |
| MECH. DES. <i>HH</i> | DATE <i>10-3-76</i> |
| ELECT. DES. | DATE |
| CHECKED | DATE |
| DRAWN <i>R. UZZO</i> | DATE <i>10-3-76</i> |

DECIMALS: .X ± .05, .XX ± .01, .XXX ± .005
 FRACTIONS: 1/64
 TOLS. ANGLES: 0°-30°

MATERIAL: _____
 FINISH: _____

THE TECHNICAL MATERIEL CORP.
 MAMARONECK, NEW YORK

ASSY P.C. INDICATOR

| | | | |
|-------|-----------------|----------|-------|
| SIZE | CODE IDENT. NO. | DWG NO. | ISSUE |
| B | 82679 | A5640 | Ø |
| SCALE | | SHEET OF | |