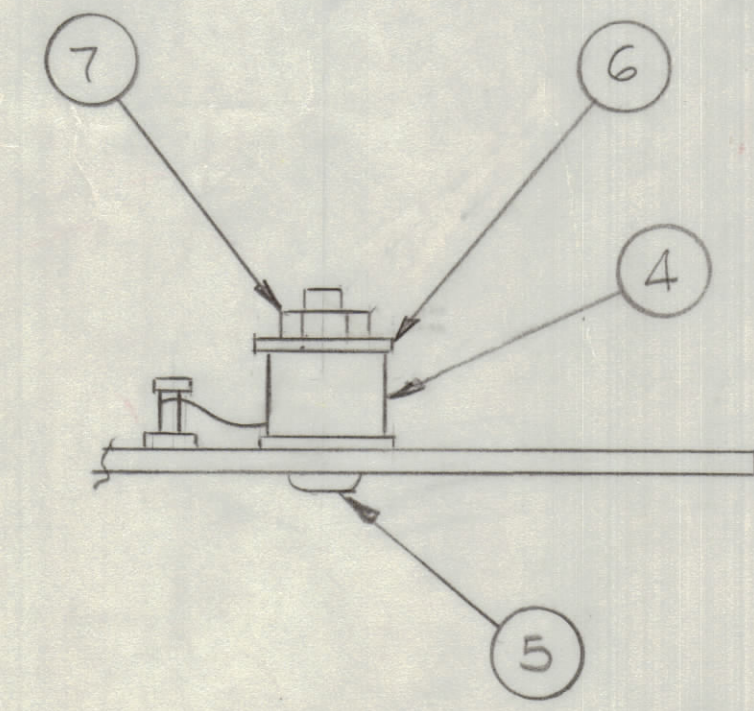


FILL WITH SOLDER



- ASSEMBLY NOTES**
1. TO MOUNT COMPONENTS INSERT LEADS THROUGH HOLES.
 2. CAUTION, WHEN APPLYING HEAT & SOLDER TO LEAD & FOIL.
 3. CLEAN & INSPECT AS PER SPEC S676.
 4. FOR ELECTRICAL COMPONENT PART NUMBERS REFER TO NPL A
 5. USE SYMBOL NUMBERS FOR ASSY. REF.

QTY. REQ.	ITEM	PART NO.	DESCRIPTION	SYMBOL
X	8	BS 100	SOLDER, TIN ALLOY	
1	7	NT137-0632	NUT, NYLON	
2	6	WA 109-52	WASHER, FIBER	
1	5	SC143-0632B10	SCREW, NYLON	
1	4	TR 205	TRANSFORMER, PHASE DETECTOR	T1
4	3	TS211-2	SOCKET (PIN 16) IC	X21, X23 X24, X26
4	2	TS 211-1	SOCKET, (PIN 14) I.C.	X21, X25 X22, X28
1	1	PC 739	PRINTED CIRCUIT BOARD	

REF: CK2123

1	KIT 416	
1	GPR-110-A	
QTY / UNIT	MODEL USED ON	ASSY NO.
APPLICATION		
CODE		

NOTICE TO PERSONS RECEIVING THIS DRAWING
 THE TECHNICAL MATERIEL CORPORATION claims proprietary right in the material disclosed hereon. This drawing is issued in confidence for engineering information only and may not be reproduced or used to manufacture anything shown hereon without permission from THE TECHNICAL MATERIEL CORPORATION to the user. This drawing is loaned for mutual assistance and is subject to recall at any time.

UNLESS OTHERWISE SPECIFIED DIMENSIONS ARE IN INCHES AND INCLUDE CHEMICALLY APPLIED OR PLATED FINISHES	
TOLERANCES ON	
DECIMALS	FRACTIONS
.X ± .05	± 1/64
.XX ± .01	ANGLES
.XXX ± .005	± 0° -30'
MATERIAL	
FINISH	

FINAL APPROVAL		DATE	THE TECHNICAL MATERIEL CORP. MAMARONECK, NEW YORK ASSY PRINTED CIRCUIT BD PHASE DETECTOR	
MECH. DES.		DATE		
ELECT. DES.		DATE		
CHECKED		DATE		
DRAWN		DATE	SIZE CODE IDENT NO. DWG NO. ISSUE D 82679 A 5634 X	
SCALE		2:1	SHEET OF	