

5

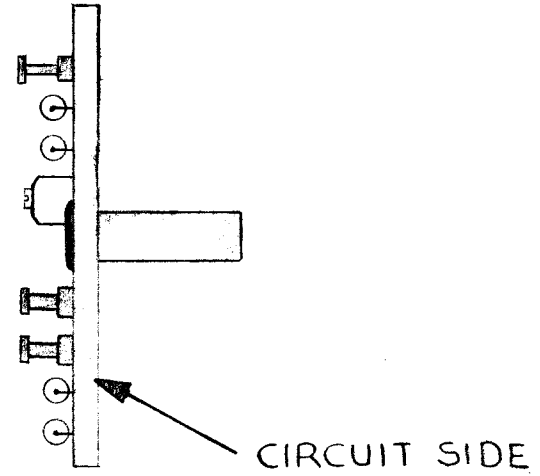
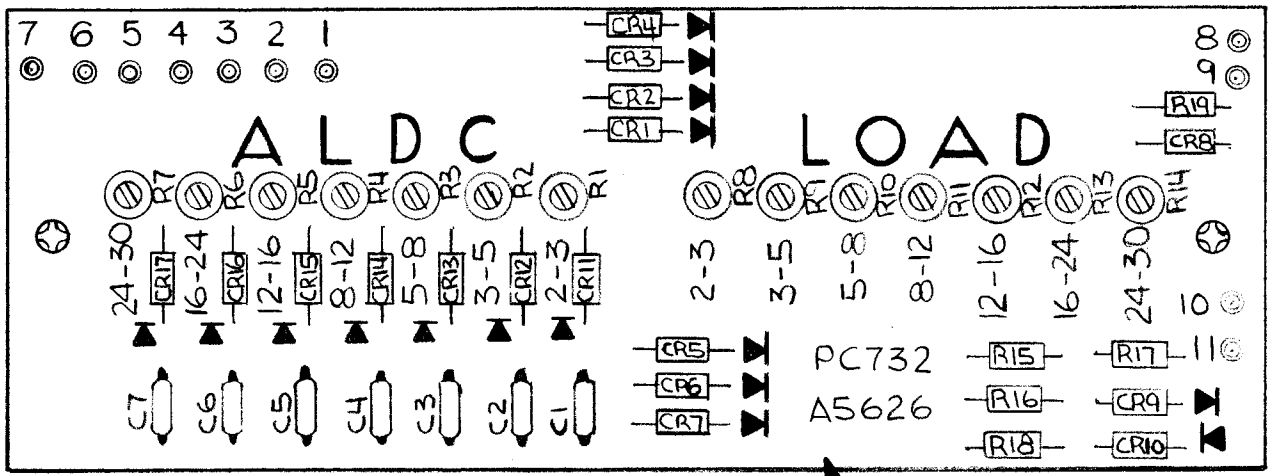
4

3

2

1

REVISIONS							
E.M.N. NO.	DRAFT	CHKD	ZONE	LTR	DESCRIPTION	DATE	APPROVED
	1			X	EXP. RELEASE	4-29-75	
	2			Ø	EXP. RELEASE FOR PRODUCTION	5/20/75	



ASSEMBLY NOTES

1. TO MOUNT COMPONENTS INSERT LEADS THROUGH HOLES.
2. CAUTION, WHEN APPLYING HEAT & SOLDER TO LEAD & FOIL.
3. CLEAN & INSPECT AS PER SPEC S676.
4. FOR ELECTRICAL COMPONENT PART NUMBERS REFER TO NPL A5626.
5. USE SYMBOL NUMBERS FOR ASSY. REF.

REQ'D	ITEM	PART NUMBER	DESCRIPTION	SYM.
X	2	BS100	SOLDER, TIN ALLOY	
1	1	PC732	PRINTED CKT. BOARD	

LIST OF MATERIAL

1	KIT 406	
QTY / UNIT	MODEL USED ON	ASSY NO.
APPLICATION		
	CODE	

**NOTICE TO PERSONS RECEIVING THIS DRAWING**  
 THE TECHNICAL MATERIEL CORPORATION claims proprietary right in the material disclosed hereon. This drawing is issued in confidence for engineering information only and may not be reproduced or used to manufacture anything shown hereon without permission from THE TECHNICAL MATERIEL CORPORATION to the user. This drawing is loaned for mutual assistance and is subject to recall at any time.

UNLESS OTHERWISE SPECIFIED DIMENSIONS ARE IN INCHES AND INCLUDE CHEMICALLY APPLIED OR PLATED FINISHES		FINAL APPROVAL <i>[Signature]</i>	DATE
DECIMALS .X ± .05 .XX ± .01 .XXX ± .005	FRACTIONS 1/64 ANGLES 0° - 30'	MECH. DES. <i>[Signature]</i>	DATE 4-29-75
MATERIAL		ELECT. DES.	DATE
FINISH		CHECKED	DATE
		DRAWN <i>[Signature]</i>	DATE 4-29-75

THE TECHNICAL MATERIEL CORP. MAMARONECK, NEW YORK			
ASSY. ALDC AND SENSE ADJUST MODIFICATION			
SIZE B	CODE IDENT. NO. 82679	DWG NO. A5626	ISSUE Ø
SCALE 1:1		SHEET OF	

5

4

3

2

1