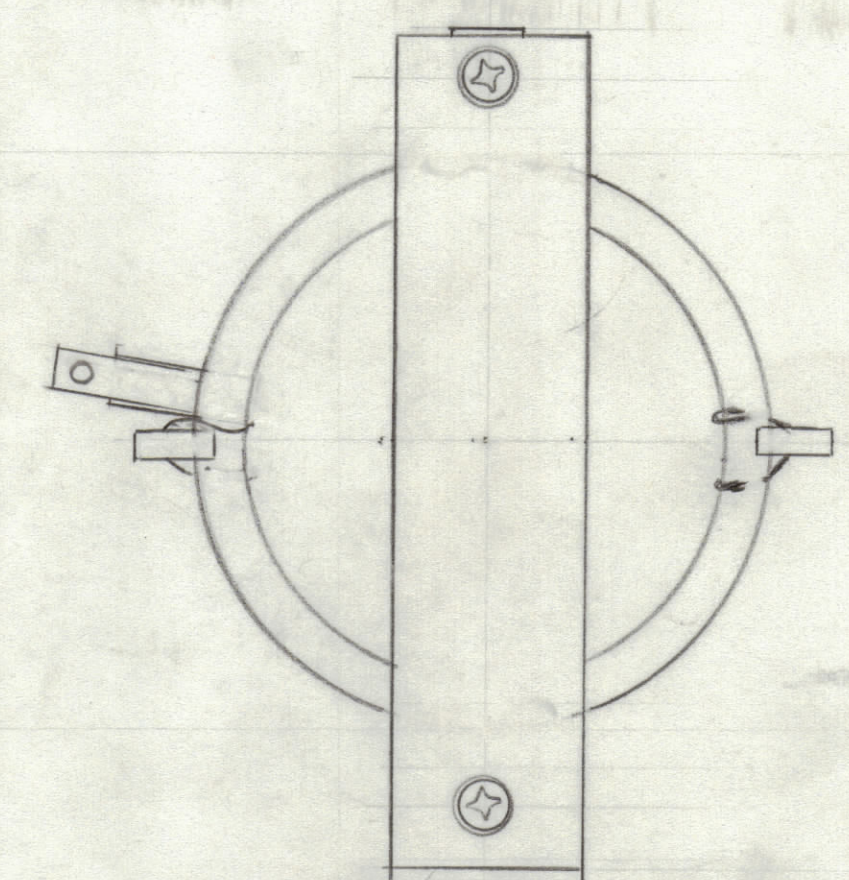
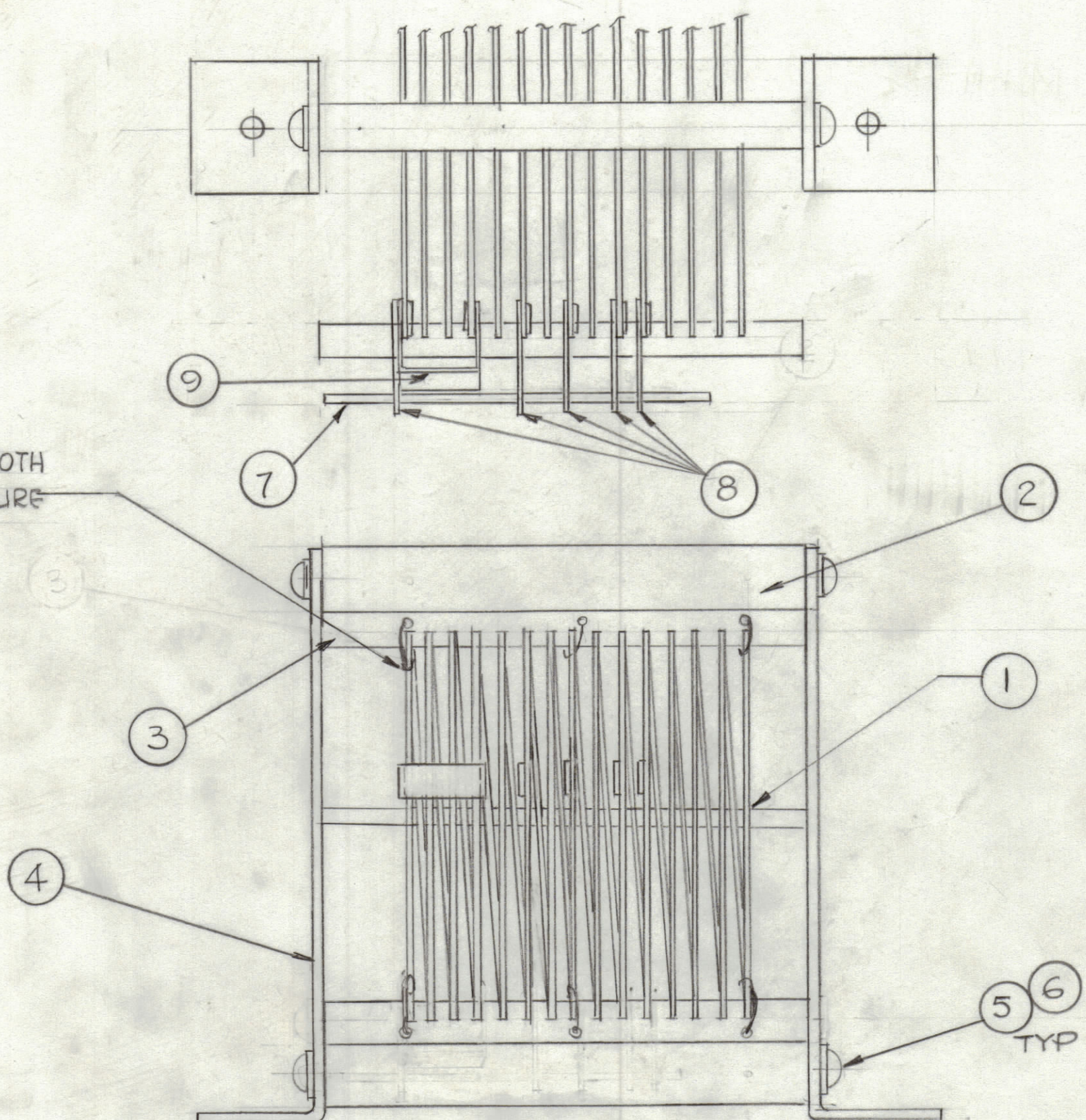


REVISIONS						
ZONE	LTR	DESCRIPTION	DATE	E.M.N.NO	DRAFT	APPD
	X	EXP. RELEASE				
	<del>0</del>	ORIGINAL RELEASE FOR PRODUCTION	4/1/75		CL	
	A	ADDED ITEMS 5,6,7,8 & 9	7-11-75	21240	GDL	CL CL



SOLDER BUSS WIRE BOTH SIDES OF COIL AND SECURE TO ITEM 3

QTY. REQ.	ITEM	PART NO.	DESCRIPTION	SYMBOL
1	9	MS 203-1-2.312	LEAD, ELECT	
5	8	MS 203-1-1.062	LEAD, ELECT	
X	7	WL100-2	BUSS WIRE	
4	6	LWE06MRN	WASHER, SPR TENS.	
4	5	SCB0632BN5	SCREW, MACHINE	
2	4	MS 6610	BRACKET, MTG COIL	
4	3	PX 907-3	SPACER, COIL	
2	2	PX 906-2	SUPPORT, SPACER TUNING COIL	
1	1	CL133-1-R-24CC	COIL, RF	

LIST OF MATERIAL					
FINAL APPROVAL	DATE	<b>THE TECHNICAL MATERIEL CORP.</b> MAMARONECK, NEW YORK  COIL ASSY, COIL RF			
MECH. DES.	DATE				
ELECT. DES.	DATE				
CHECKED	DATE				
DRAWN	DATE				
		SIZE	CODE IDENT. NO.	DWG NO.	ISSUE
		C	82679	A5622	A
SCALE 1:1		SHEET		OF	

QTY / UNIT	MODEL USED ON	ASS'Y NO.
1	ATU-1K	A5621
APPLICATION		
	CODE	
<small>NOTICE TO PERSONS RECEIVING THIS DRAWING</small> THE TECHNICAL MATERIEL CORPORATION claims proprietary right in the material disclosed hereon. This drawing is issued in confidence for engineering information only and may not be reproduced or used to manufacture anything shown hereon without permission from THE TECHNICAL MATERIEL CORPORATION to the user. This drawing is loaned for mutual assistance and is subject to recall at any time.		

UNLESS OTHERWISE SPECIFIED DIMENSIONS ARE IN INCHES AND INCLUDE CHEMICALLY APPLIED OR PLATED FINISHES

TOLERANCES ON

DECIMALS	FRACTIONS
.X ± .05	± 1/64
.XX ± .01	ANGLES
.XXX ± .005	± 0° -30'

MATERIAL

FINISH