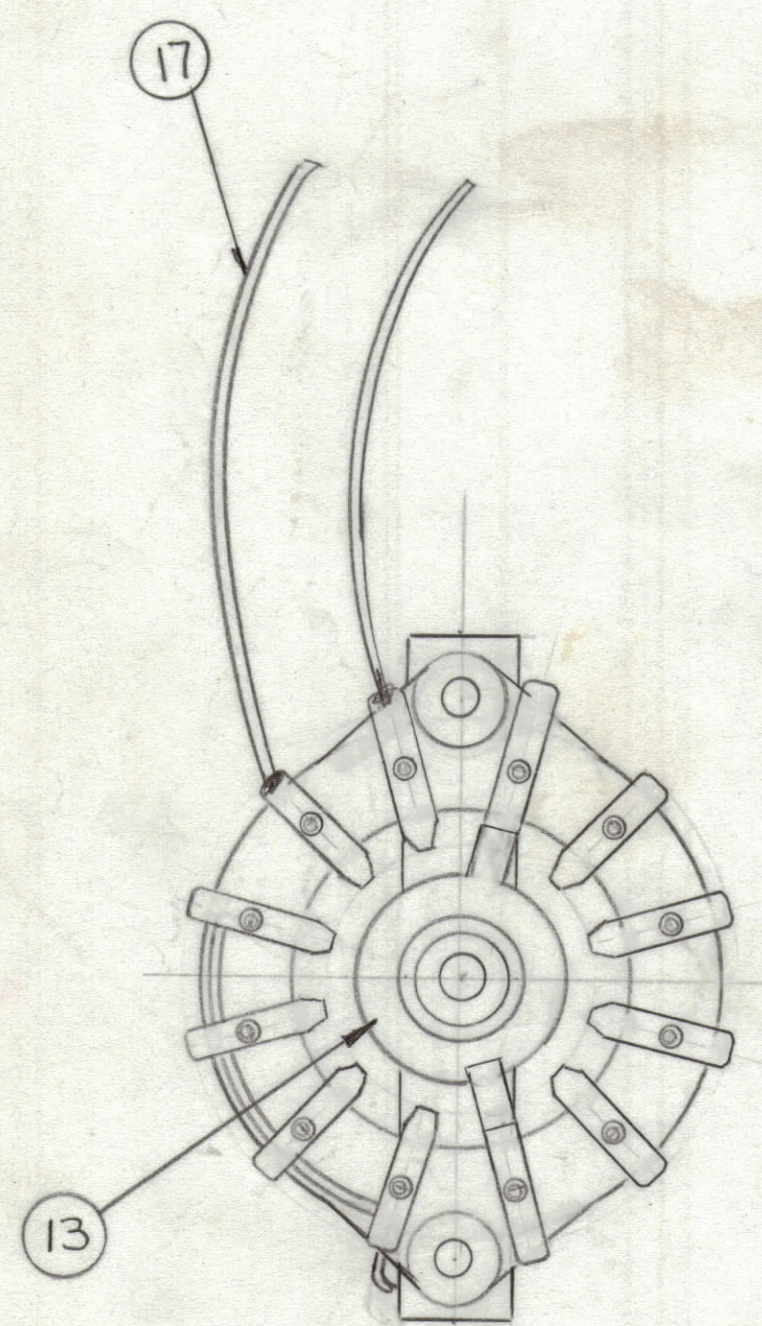
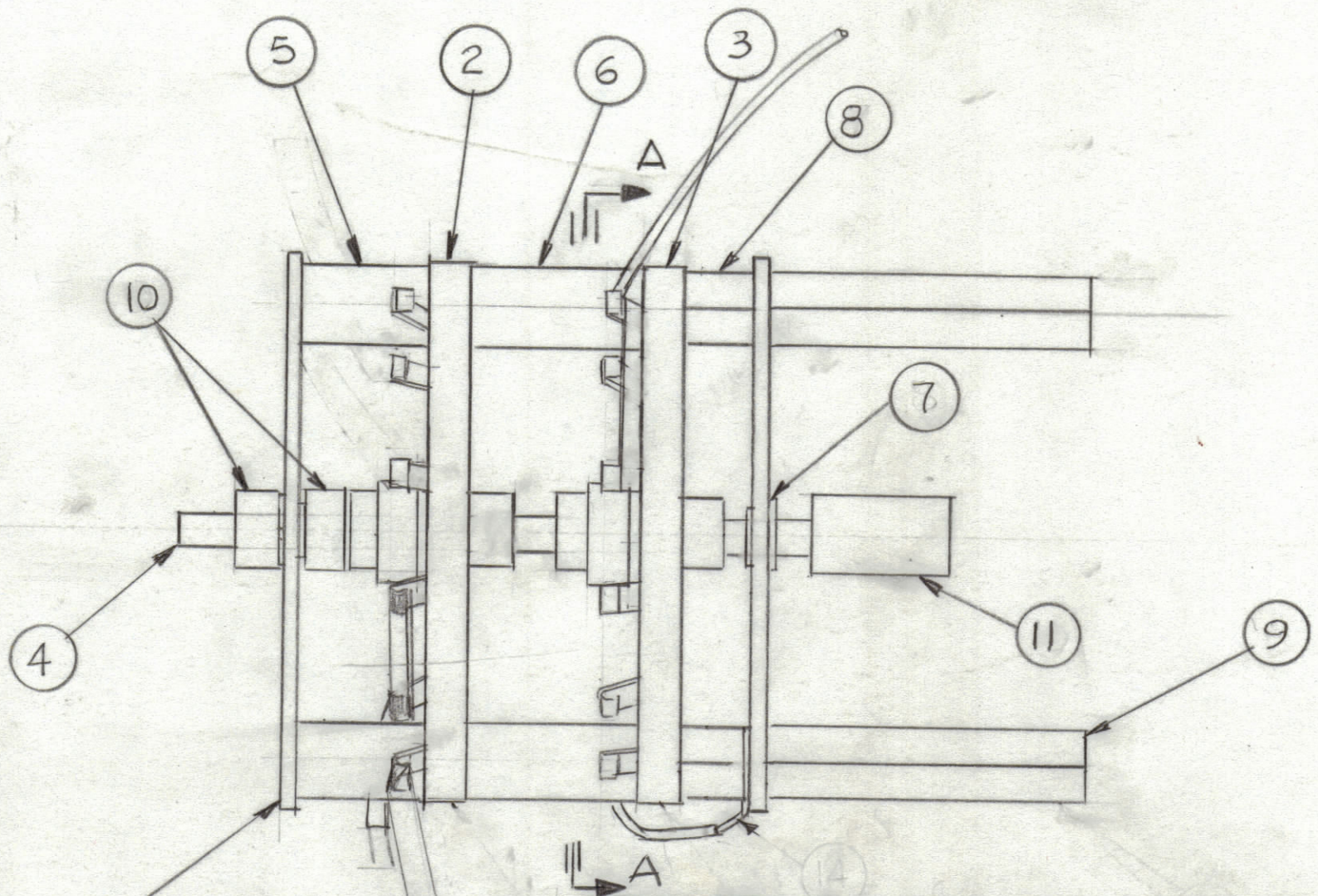
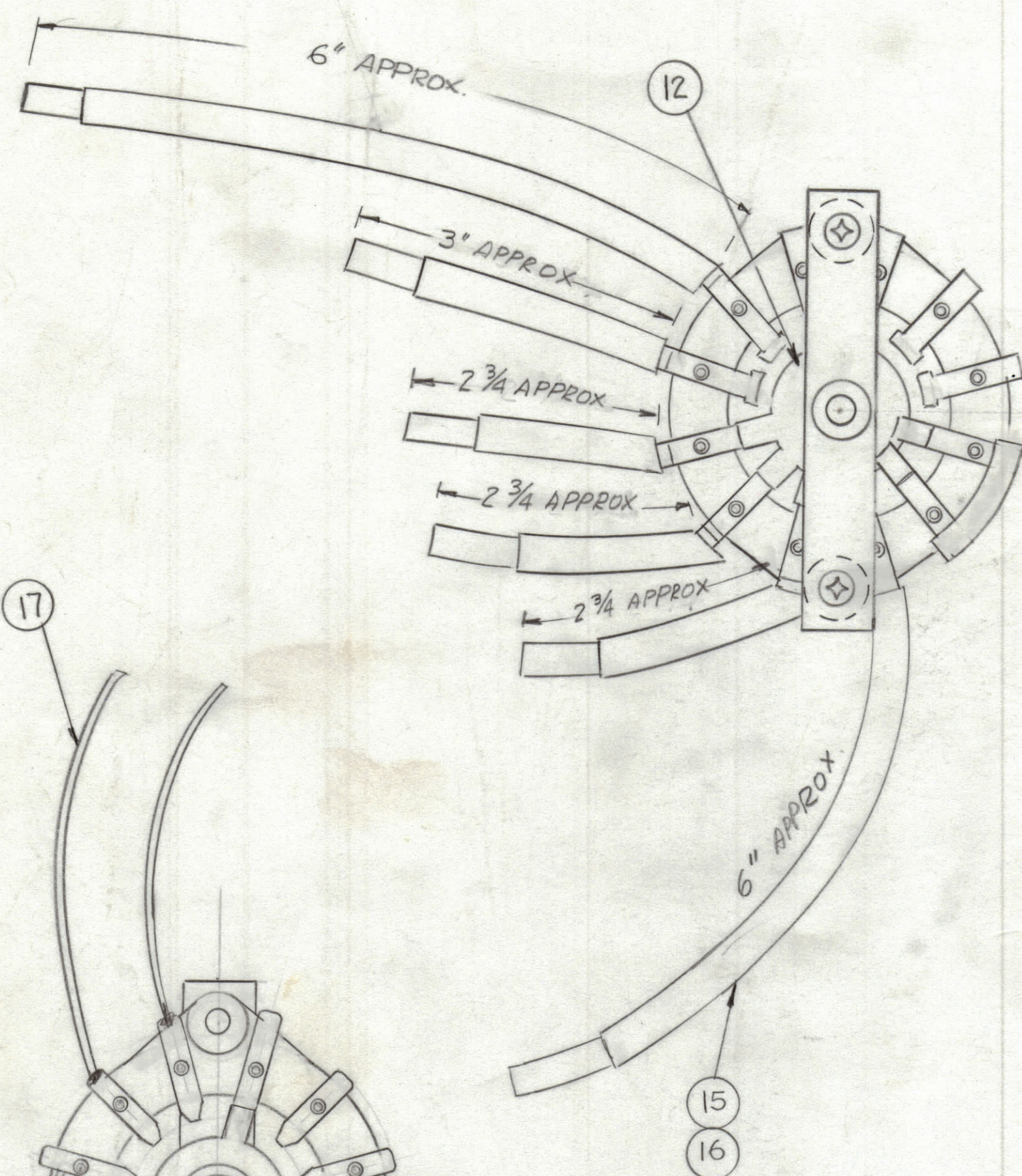


REVISIONS						
ZONE	LTR	DESCRIPTION	DATE	E.M.N.NO	DRAFT	CHKD
	X	EXP. RELEASE				
	Ø	ORIGINAL RELEASE FOR PRODUCTION	3-13-75			CL



QTY.	ITEM	PART NO.	DESCRIPTION	SYMBOL
X	17	WI 139-2	WIRE, INSULATED	
X	16	PX 370-3-7	INSULATION, SLEEVING	
X	15	1/4" STRIP	LEAD, CONNECTING	
1	14	TE 104-4	TERMINAL, LOCKING	
1	13	RO 100-2	ROTOR	
1	12	RO 100-4	ROTOR	
1	11	MC 130	COUPLING	
2	10	PM 785	BUSHING	
2	9	TE 0832AE 2.0H6	STANDOFF	
2	8	TE 0832AE 46H	STANDOFF	
2	7	BB 117-5	BEARING	
2	6	NS 3W020	INS. STANDOFF	
2	5	NS 3W020	INS. STANDOFF	
1	4	PM 691RF 4.37E	INS., ROD	
1	3	WS 106-2	WAFE, CER.	
1	2	WS 106-8	WAFER, CER.	
2	1	MS 6589	PLATE MTG BEARING	

1	TMA-1K	BMA 520
QTY / UNIT	MODEL USED ON	ASS'Y NO.
APPLICATION		
CODE		

UNLESS OTHERWISE SPECIFIED  
DIMENSIONS ARE IN INCHES  
AND INCLUDE CHEMICALLY APPLIED  
OR PLATED FINISHES

TOLERANCES ON

DECIMALS	FRACTIONS
.X ± .05	± 1/64
.XX ± .01	ANGLES
.XXX ± .005	± 0° -30'

FINAL APPROVAL <i>CL</i>	DATE 3/13/75
MECH. DES. F. IANNUZZI	DATE 2-7-75
ELECT. DES.	DATE
CHECKED F. IANNUZZI	DATE 2-7-75
DRAWN G. De LUCA	DATE 1-21-74

LIST OF MATERIAL			
THE TECHNICAL MATERIEL CORP. MAMARONECK, NEW YORK			
ASSY, OUTPUT SWITCHING			
SIZE	CODE IDENT. NO.	DWG NO.	ISSUE
C	82679	A 5614	Ø
SCALE	1:1		SHEET OF

NOTICE TO PERSONS RECEIVING THIS DRAWING  
THE TECHNICAL MATERIEL CORPORATION claims proprietary right in the material disclosed hereon.  
This drawing is issued in confidence for engineering information only and may not be reproduced or used  
to manufacture anything shown hereon without permission from THE TECHNICAL MATERIEL CORPORATION  
to the user. This drawing is loaned for mutual assistance and is subject to recall at any time.