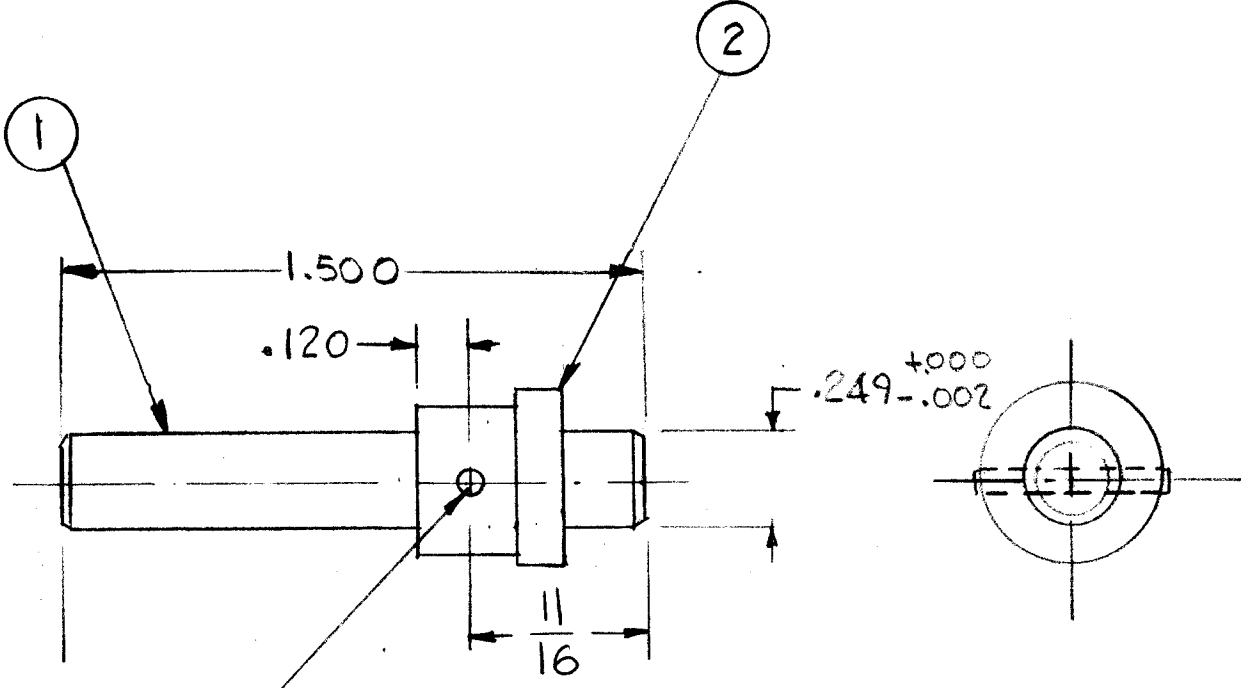


REVISIONS							
E.M.N. NO.	DRAFT	CHKD	ZONE	LTR	DESCRIPTION	DATE	APPROVED
	GDL			X	EXP. RELEASE	9-24-74	
	JP			<del>Ø</del>		5/20/75	



DRILL (.062-.065) DIA THRU AND PIN WITH ITEM 3

REQ'D	ITEM	PART NUMBER	DESCRIPTION	SYM.
1	3	PN59-0626	PIN, SPRING	
1	2	GR205-1	GEAR, SPUR, HUB	
1	1	PM1051-RF.1500	SHAFT	

LIST OF MATERIAL

1	GPR110 (KIT404)	A5623
QTY / UNIT	MODEL USED ON	ASS'Y NO.
APPLICATION		
	CODE	

**NOTICE TO PERSONS RECEIVING THIS DRAWING**  
 THE TECHNICAL MATERIEL CORPORATION claims proprietary right in the material disclosed hereon. This drawing is issued in confidence for engineering information only and may not be reproduced or used to manufacture anything shown hereon without permission from THE TECHNICAL MATERIEL CORPORATION to the user. This drawing is loaned for mutual assistance and is subject to recall at any time.

UNLESS OTHERWISE SPECIFIED DIMENSIONS ARE IN INCHES AND INCLUDE CHEMICALLY APPLIED OR PLATED FINISHES	FINAL APPROVAL <i>[Signature]</i>	DATE 5/17/75
DECIMALS .X ± .05 .XX ± .01 .XXX ± .005	MECH. DES.	DATE
FRACTIONS 1/64 TOLS. ANGLES 0° .30'	ELECT. DES.	DATE
MATERIAL	CHECKED <i>[Signature]</i>	DATE
FINISH	DRAWN G.D. LUCIA	DATE

THE TECHNICAL MATERIEL CORP. MAMARONECK, NEW YORK			
GEAR ASSY			
SIZE B	CODE IDENT. NO. 82679	DWG NO. A5603	ISSUE <i>[Signature]</i>
SCALE	SHEET OF		