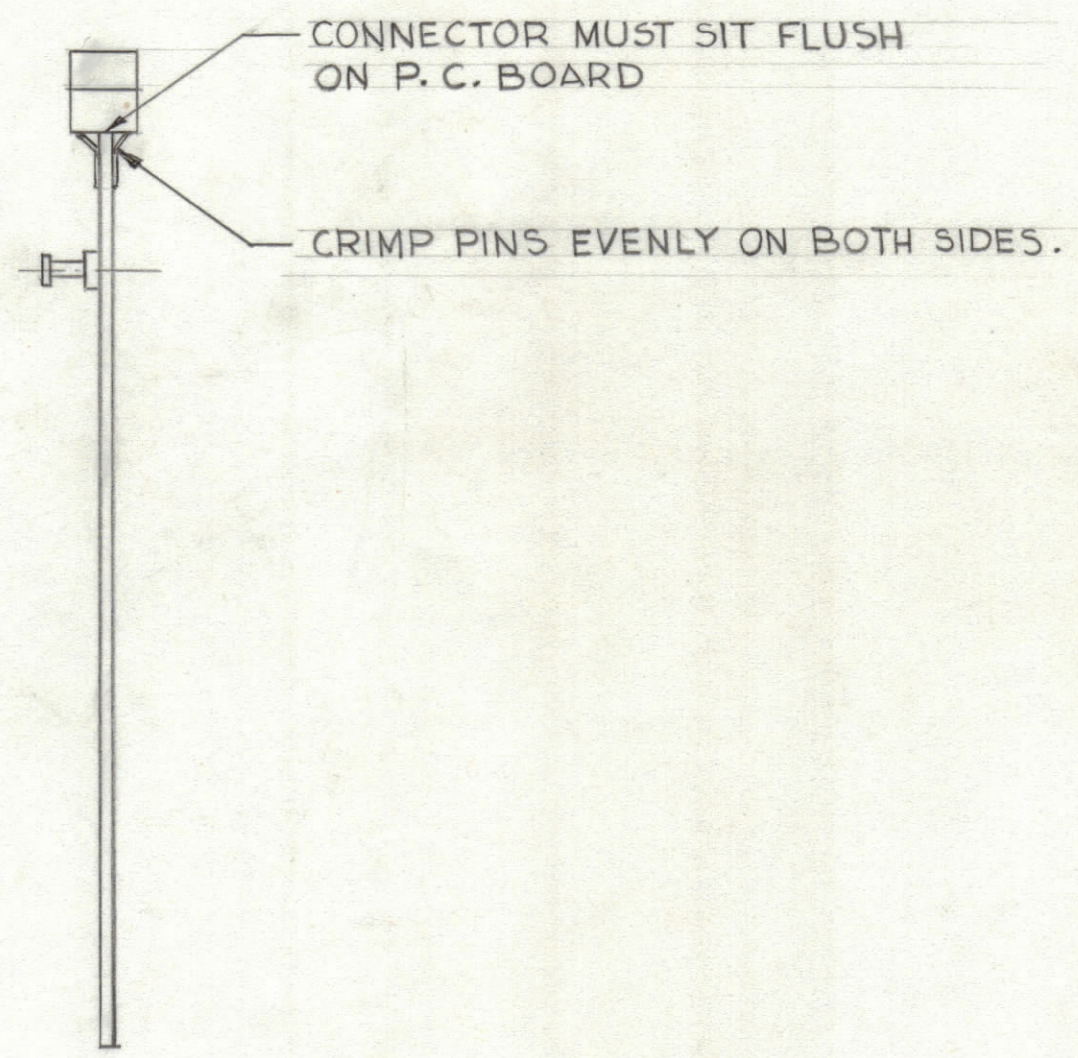
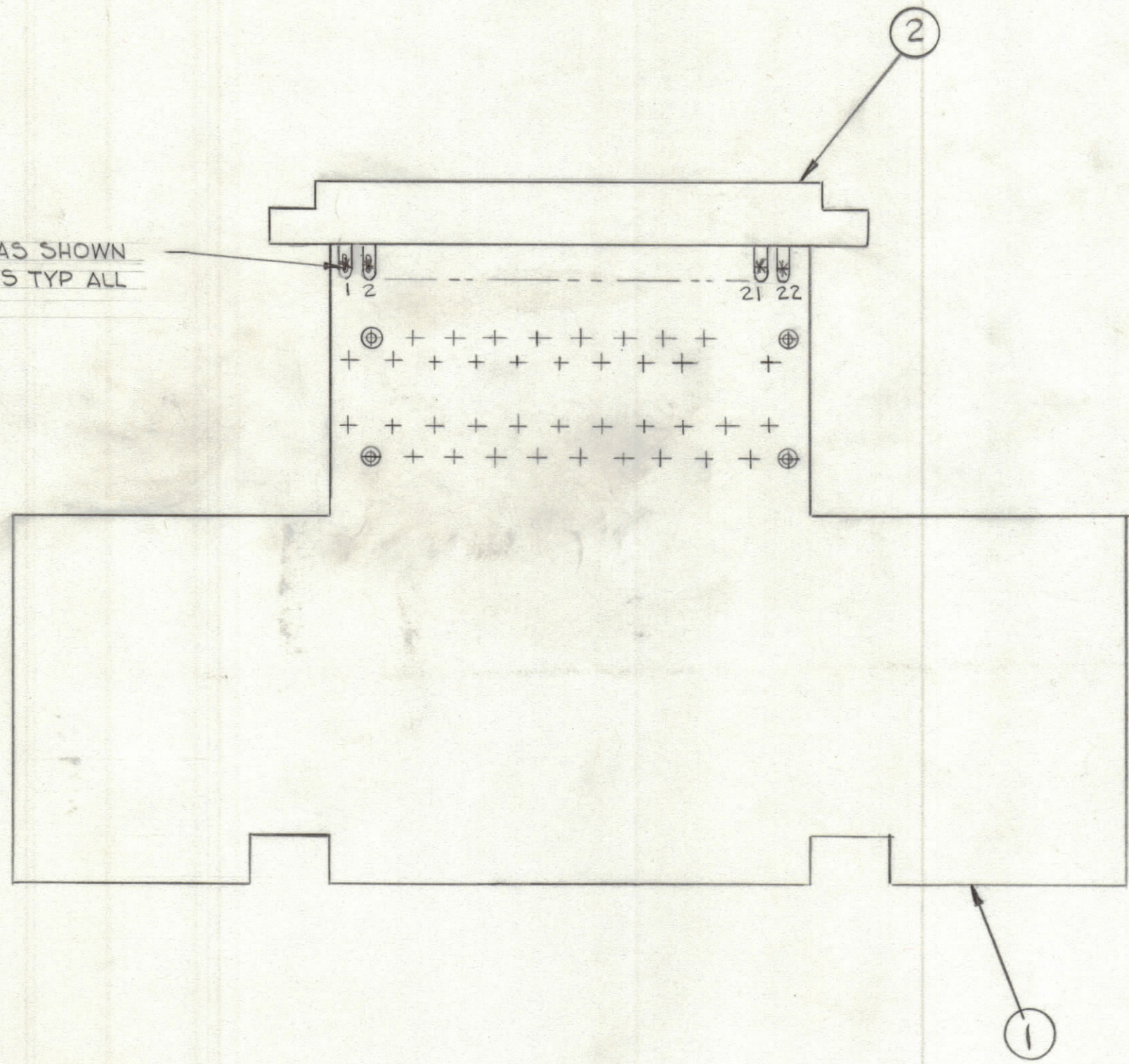


REVISIONS						
ZONE	LTR	DESCRIPTION	DATE	E.M.N.NO	DRAFT	CHKD APPD

SOLDER AS SHOWN
BOTH SIDES TYP ALL
PINS



QTY. REQ.	ITEM	PART NO.	DESCRIPTION	SYMBOL
X	3	BS100	SOLDER, TIN ALLOY	
1	2	JJ319-22 DFE	CONNECTOR RECEPTACLE	
1	1	PC 718	PRINTED CIRCUIT BD	

LIST OF MATERIAL

THE TECHNICAL MATERIEL CORP.
MAMARONECK, NEW YORK

ASS'Y PRINTED CIRCUIT BD
TEST CARD 44

1	BMA 515	GPR 110
QTY / UNIT	MODEL USED ON	ASS'Y NO.
APPLICATION		
CODE		

NOTICE TO PERSONS RECEIVING THIS DRAWING
THE TECHNICAL MATERIEL CORPORATION claims proprietary right in the material disclosed hereon. This drawing is issued in confidence for engineering information only and may not be reproduced or used to manufacture anything shown hereon without permission from THE TECHNICAL MATERIEL CORPORATION to the user. This drawing is loaned for mutual assistance and is subject to recall at any time.

UNLESS OTHERWISE SPECIFIED
DIMENSIONS ARE IN INCHES
AND INCLUDE CHEMICALLY APPLIED
OR PLATED FINISHES

TOLERANCES ON

DECIMALS	FRACTIONS
.X ± .05	± 1/64
.XX ± .01	ANGLES
.XXX ± .005	± 0° -30'

FINAL APPROVAL	DATE
MECH. DES.	DATE
ELECT. DES.	DATE
CHECKED	DATE
DRAWN	DATE

MATERIAL	SIZE	CODE IDENT.NO	DWG NO.	ISSUE
FINISH	C	82679	A5601	
SCALE 1:1		SHEET		OF