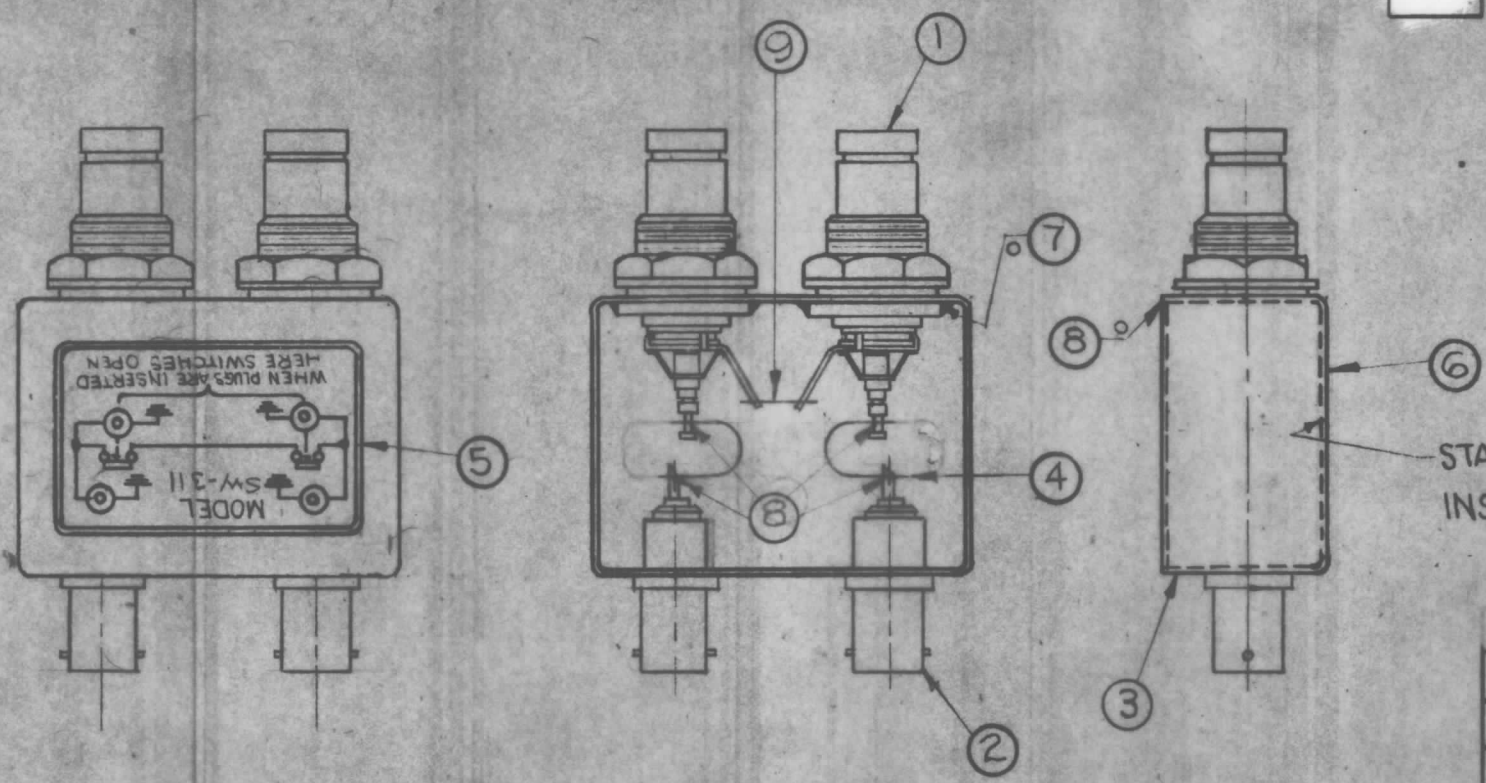


A 5600

REVISIONS					
SYM	DESCRIPTION	DATE	E.M.N. NO.	DRAFT	CHKD
Ø	ORIGINAL RELEASE FOR PRODUCTION	6-20-74		DV	
A	ITEM 5 WAS - 4.	9/27/66	21466	HJB	KP



1. INDUCTION HEATING EQUIPMENT SET AT:  
 AMPERES -  
 SECONDS -
  2. USE ITEM SEVEN (7) FOR MOUNTING ITEMS ONE (1) AND TWO (2).
  3. USE ITEM EIGHT (8) FOR SEALING COVER ITEM THREE (3).
  4. STRAP (ITEM 4) MUST BE KEPT AS FLEXIBLE AS POSSIBLE. DO NOT ALLOW SOLDER TO RUN OVER STRAP. LAY STRAP IN SO THAT IT CANNOT TOUCH CAN OR CONNECTOR BODIES.
  5. FINISH AS FOLLOWS:  
 S-114 - ZINC CHROMATE PRIMER  
 S-115 - TMC SMOOTH GREY ENAMEL  
 (DO NOT PAINT CONNECTOR BODIES.)
  6. AFFIX ITEM FIVE (5) TO FRONT AS SHOWN.
  7. AFFIX ITEM SIX (6) TO REAR AS SHOWN.
- Ø - DENOTES SOLDER ALL AROUND

REQ'D.	ITEM	PART NUMBER	DESCRIPTION	SYMBOL
1"	9	WL-100-5	WIRE, BUSS-BAR #18	
X	8	BS-106-2	SOLDER, SOFT 361°	
X	7	BS-106-4	SOLDER, SOFT 450°	
1	6	NP-488	NAMEPLATE IDENTIFICATION (FOIL CAL.)	
1	5	NP-490-10	SCHEMATIC, DIAGRAM (FOIL CAL.)	
2	4	MS-2983-5	STRAP, FLEXIBLE CONNECTOR	
1	3	BX-200-1	CASE, COVER	
2	2	JJ354	ADAPTOR CONNECTOR	
2	1	JJ342	ADAPTOR, CONNECTOR	

LIST OF MATERIAL			
MATERIAL	SEE LIST.	THE TECHNICAL MATERIEL CORP. MAMARONECK, NEW YORK	
FINISH	SEE NOTE NO.5	TITLE SW477 ASSEMBLY	
UNLESS OTHERWISE SPECIFIED DIMENSIONS ARE IN INCHES AND INCLUDE CHEMICALLY APPLIED OR PLATED FINISHES		DRAWN	DATE
		CHECKED	DATE
		ELECT. DES.	DATE
		MECH. DES.	DATE
TOLERANCES		SHEET	
DECIMALS	FRACTIONS	REV. LTR.	
.X ± .05	± 1/64	A 5600	
.XX ± .01	ANGLES	A	
.XXX ± .005	± 0° 30'		

Q'TY./UNIT	MODEL USED ON	ASS'Y. NO.
DO NOT SCALE	SW477	A 5600
THE CONTENTS OF THIS DRAWING ARE THE EXCLUSIVE PROPERTY OF THE TECHNICAL MATERIEL CORP. ITS UNAUTHORIZED USE OR REPRODUCTION IN WHOLE OR IN PART IS STRICTLY FORBIDDEN.		

NOTES