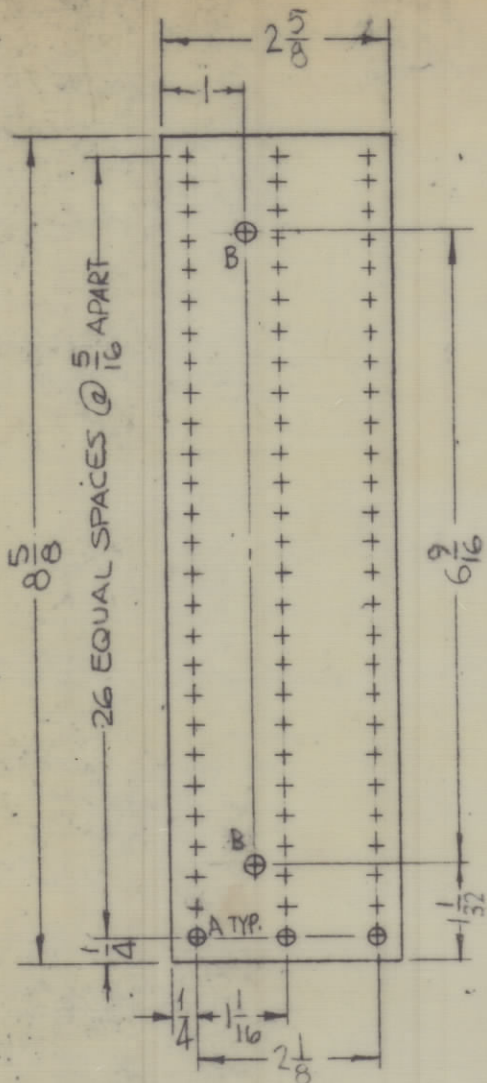


REVISIONS

ZONE	SYM	DESCRIPTION	DATE	S.M.N. NO.	DRAFT	CHKD	APPR
X		EXP RELEASE	8/8/66	X	7/60		ONG
XI		ITEM 2 REQ. WAS 18, INS. ON IT. IS REVISED	9-27-66	XI	2/66		ONG
Ø		ORIGINAL RELEASE FOR PRODUCTION	12-14-66	Ø	RME		



MARK TMC P/N  
1/8 HIGH GOTHIC  
W/LATEST REV.  
LETTER.  
(A5538-)  
ON REAR

- L8200 L8218
- C8200 C8209
- L8201 L8219
- L8202 L8220
- C8201 C8210
- L8203 L8221
- L8204 L8222
- C8202 C8211
- L8205 L8223
- L8206 L8224
- C8203 C8212
- L8207 L8225
- L8208 L8226
- C8204 C8213
- L8209 L8227
- L8210 L8228
- C8205 C8214
- L8211 L8229
- L8212 L8230
- C8206 C8215
- L8213 L8231
- L8214 L8232
- C8207 C8216
- L8215 L8233
- L8216 L8234
- C8208 C8217
- L8217 L8235

MARKING  
THIS SIDE

MOUNT IN ALL A HOLES  
MOUNT IN ALL B HOLES

FUNGUS PROOFING PER  
TMC SPECIFICATION S-113

MARKING PROCESS: AS PER TMC SPECIFICATION S-727.

LETTERING: 1/8 HIGH BLACK GOTHIC, LOCATED AS SHOWN.

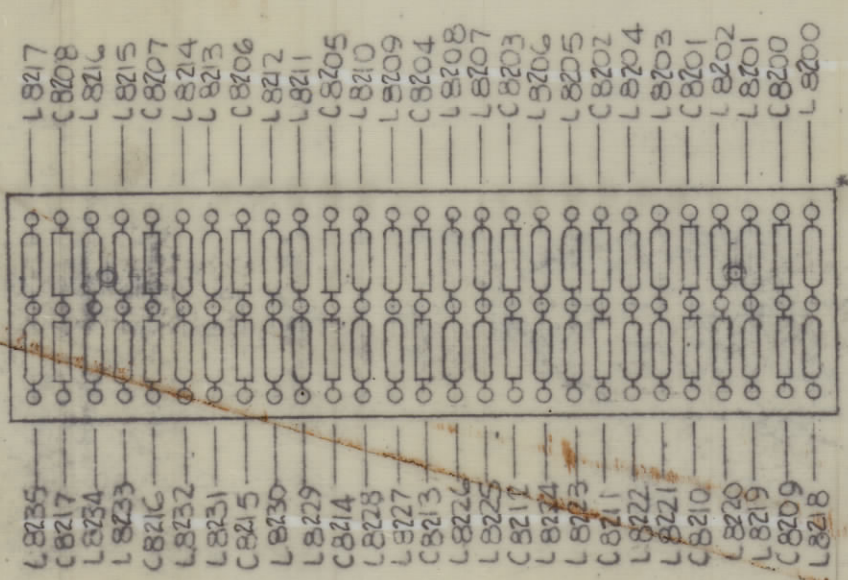
HOLES:  
A-.116 DIA. (81 REQ.)  
B-.189 DIA. (2 REQ.)

MATERIAL:  
3/32 THICK GII EPOXY

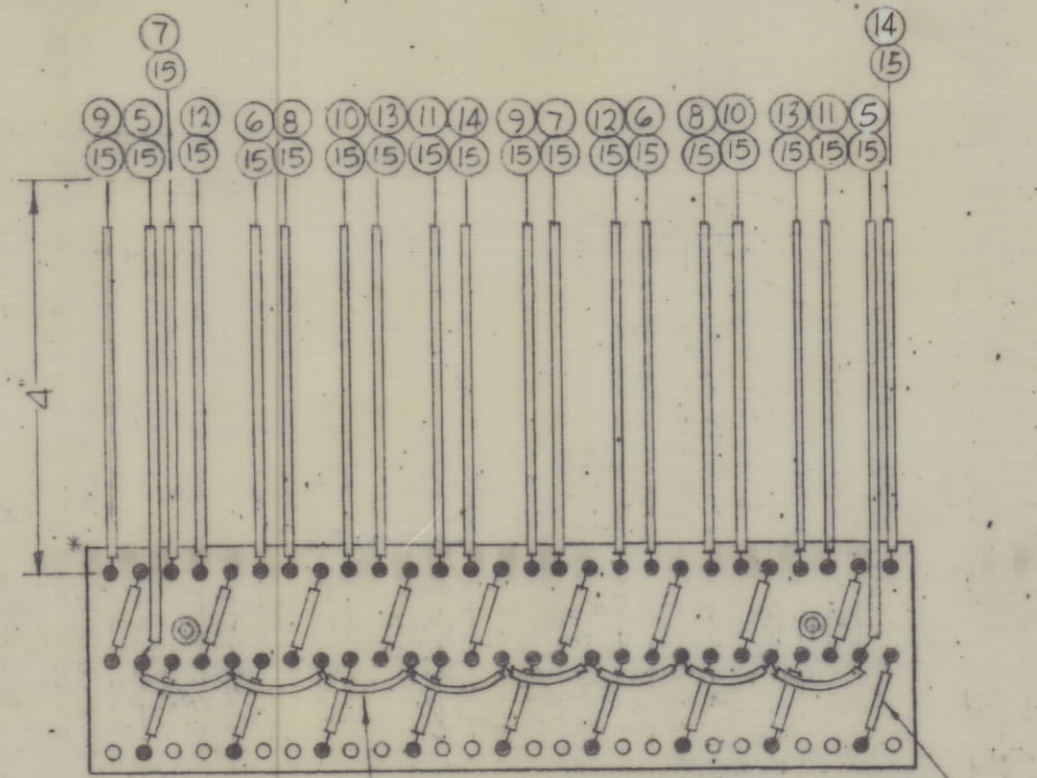
A5538-1  
MACHINING

A5538-2  
MARKING

A5538-3  
SUB ASSY



TOP VIEW



BOTTOM VIEW

A5538-4  
FINAL ASSY

• = DENOTES SOLDER  
○ = DENOTES NO SOLDER

NOTES

1EA	RAK-110-2	BMA160
QTY/UNIT	MODEL USED ON	ASSY. NO.
SCALE 1:2	A	

REQ'D.	ITEM	PART NUMBER	DESCRIPTION	SYMBOL
X	16	BS100	SOLDER, TIN ALLOY	
X	15	WL100-7	WIRE, ELECT. BUSS	
X	14	PX104-0-034	INS. SLVG. ELECT	
	13	-9		
	12	-8		
	11	-7		
	10	-6		
	9	-5		
	8	-4		
	7	-3		
	6	-2		
X	5	PX104-1-034	INS. SLVG. ELECT.	
18	4	CMISFS11J03	CAPACITOR, FIXED, MICA, DIELECTRIC	C820070 C8217
36	3	CL270-10	COIL, RF	L820070 L8235
81	2	TE109-2	TERMINAL STUD	
2	1	TE108-2	NUT, PLAIN CLINCH	

BUDETTI		LIST OF MATERIAL	
MATERIAL	SEE DWG.	THE TECHNICAL MATERIEL CORP. MAMARONECK, NEW YORK	
FINISH	SEE DWG.	TITLE TERMINAL BOARD ASSY	
UNLESS OTHERWISE SPECIFIED DIMENSIONS ARE IN INCHES AND INCLUDE CHEMICALLY APPLIED OR PLATED FINISHES		DRAWN	FINAL APPROVAL
TOLERANCES		DATE	DATE
.X ± .05		DATE	DATE
.XX ± .01		DATE	DATE
.XXX ± .005		DATE	DATE
FRACTIONS ± 1/64 ANGLE ± 0° 30'		DATE	DATE
		DATE	DATE
		DATE	DATE

A5538

Ø

B

A

REV. LTR.