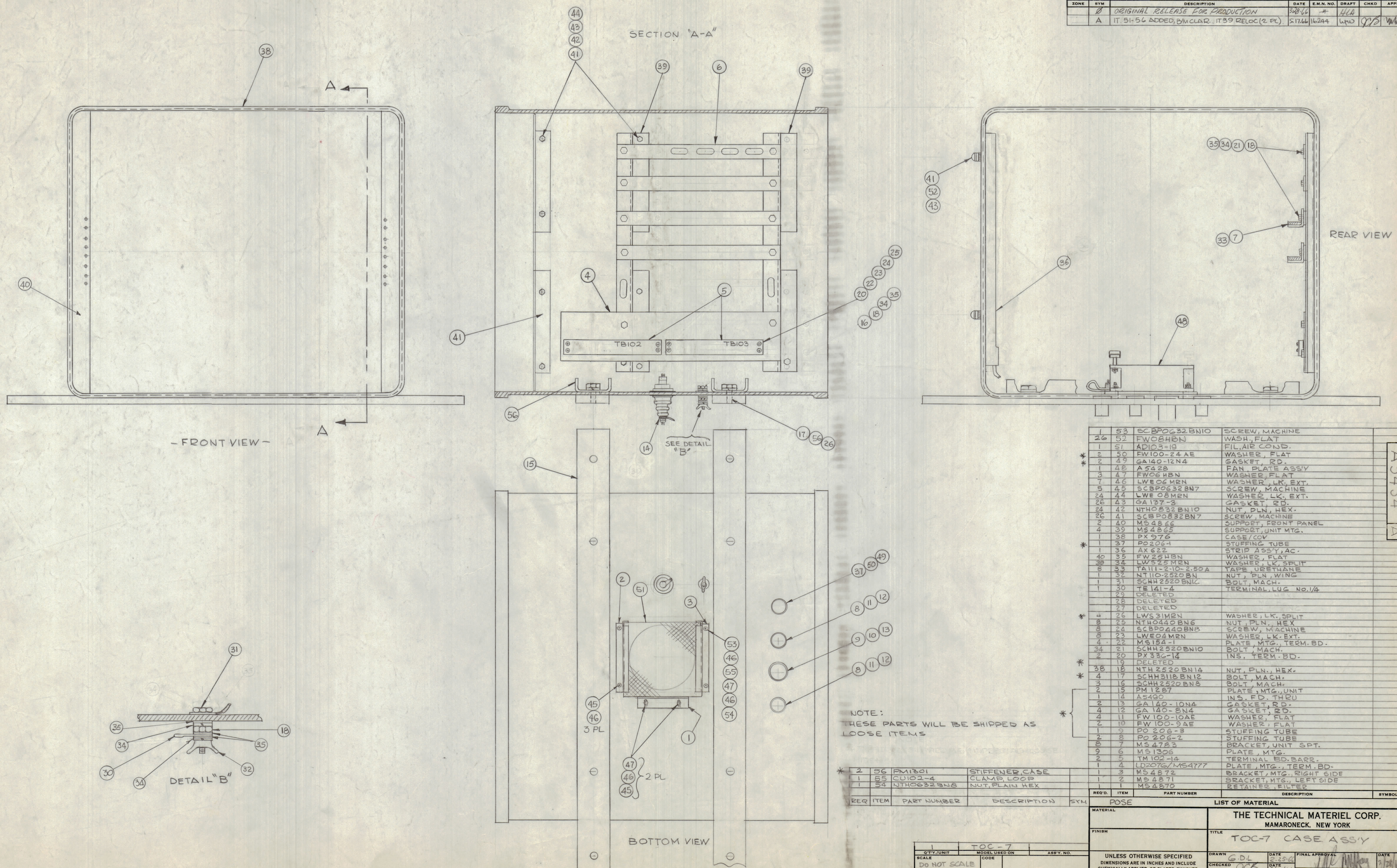


REVISIONS							
ZONE	SYM	DESCRIPTION	DATE	EM.N. NO.	DRAFT	CHKD	APPD
Ø		ORIGINAL RELEASE FOR PRODUCTION	3/28/66	-#	HLA		
A		IT 51-56 ADDED, B/M CLAR., IT 39 RELOC (2 PL)	5/17/66	16244	WHD	QTS	WHA



REQ'D	ITEM	PART NUMBER	DESCRIPTION	SYM
1	53	SCBP0632BN10	SCREW, MACHINE	
26	52	FW08HBN	WASH., FLAT	
1	51	AD103-19	FIL, AIR COND.	
2	50	FW100-24 AE	WASHER, FLAT	
2	49	GA140-12N4	GASKET, RD.	
1	48	A5428	FAN PLATE ASS'Y	
3	47	FW06HBN	WASHER, FLAT	
7	46	LWE06MRN	WASHER, LK, EXT.	
5	45	SCBP0632BN7	SCREW, MACHINE	
24	44	LWE08MRN	WASHER, LK, EXT.	
26	43	GA137-3	GASKET, RD.	
24	42	NTH0832BN10	NUT, PLN, HEX.	
26	41	SCBP0832BN7	SCREW, MACHINE	
2	40	MS4866	SUPPORT, FRONT PANEL	
4	39	MS4865	SUPPORT, UNIT MTG.	
1	38	PX976	CASE/COV	
1	37	PO206-1	STUFFING TUBE	
1	36	AX622	STRIP ASS'Y, AC.	
40	35	FW25HBN	WASHER, FLAT	
39	34	LW525MRN	WASHER, LK, SPLIT	
8	33	TALI-2-10-2.50A	TAPE, URETHANE	
1	32	NT110-2520BN	NUT, PLN, WING	
1	31	SCHH2520BN10	BOLT, MACH.	
1	30	TE141-4	TERMINAL LUG NO.1/4	
29	29	DELETED		
28	28	DELETED		
27	27	DELETED		
4	26	LWS31MRN	WASHER, LK, SPLIT	
8	25	NTH0440BN6	NUT, PLN, HEX	
8	24	SCBP0440BN8	SCREW, MACHINE	
8	23	LWE04MRN	WASHER, LK, EXT.	
4	22	MS154-1	PLATE, MTG., TERM. BD.	
34	21	SCHH2920BN10	BOLT, MACH.	
2	20	PX336-14	INS. TERM. BD.	
19	19	DELETED		
38	18	NTH2520BN14	NUT, PLN, HEX.	
4	17	SCHH3118BN12	BOLT, MACH.	
3	16	SCHH2520BN8	BOLT, MACH.	
2	15	PM1287	PLATE, MTG., UNIT	
1	14	A5490	INS. FD. THRU	
2	13	GA140-10N4	GASKET, RD.	
4	12	GA140-8N4	GASKET, RD.	
4	11	FW100-10AE	WASHER, FLAT	
2	10	FW100-9AE	WASHER, FLAT	
1	9	PO206-3	STUFFING TUBE	
2	8	PO206-2	STUFFING TUBE	
8	7	MS4783	BRACKET, UNIT SPT.	
9	6	MS1306	PLATE, MTG.	
2	5	TM102-14	TERMINAL BD. BARR.	
1	4	LD2076/MS4777	PLATE, MTG., TERM. BD.	
1	3	MS4872	BRACKET, MTG., RIGHT SIDE	
1	2	MS4871	BRACKET, MTG., LEFT SIDE	
1	1	MS4870	RETAINER, FILTER	

NOTE:
THESE PARTS WILL BE SHIPPED AS
LOOSE ITEMS

REQ ITEM	PART NUMBER	DESCRIPTION	SYM
2	56	PM1801	STIFFENER CASE
1	55	CU102-4	CLAMP LOOP
1	54	NTH0632BN8	NUT, PLAIN HEX

REQ'D	ITEM	PART NUMBER	DESCRIPTION	SYM
2	56	PM1801	STIFFENER CASE	
1	55	CU102-4	CLAMP LOOP	
1	54	NTH0632BN8	NUT, PLAIN HEX	

Q'TY./UNIT	MODEL USED ON	ASSY. NO.
SCALE	CODE	
DO NOT SCALE		

UNLESS OTHERWISE SPECIFIED DIMENSIONS ARE IN INCHES AND INCLUDE CHEMICALLY APPLIED OR PLATED FINISHES	DRAWN	DATE	FINAL APPROVAL	DATE
DECIMALS ±.05 XX ±.01 XXX ±.005	G.D.L.	2-25-66	[Signature]	2/24/66
FRACTIONS ± 1/64 ANGLES ± 0' 30"	QTS	3/24/66	[Signature]	
TOLERANCES	ELECT. DES.	DATE		
	MECH. DES.	DATE		

NOTES

THE CONTENTS OF THIS DRAWING ARE THE EXCLUSIVE PROPERTY OF THE TECHNICAL MATERIEL CORP. ITS UNAUTHORIZED USE OR REPRODUCTION IN WHOLE OR IN PART IS STRICTLY FORBIDDEN.

REPRODUCTION IN WHOLE OR IN PART IS STRICTLY FORBIDDEN.

A5434

A

REV. LTR.