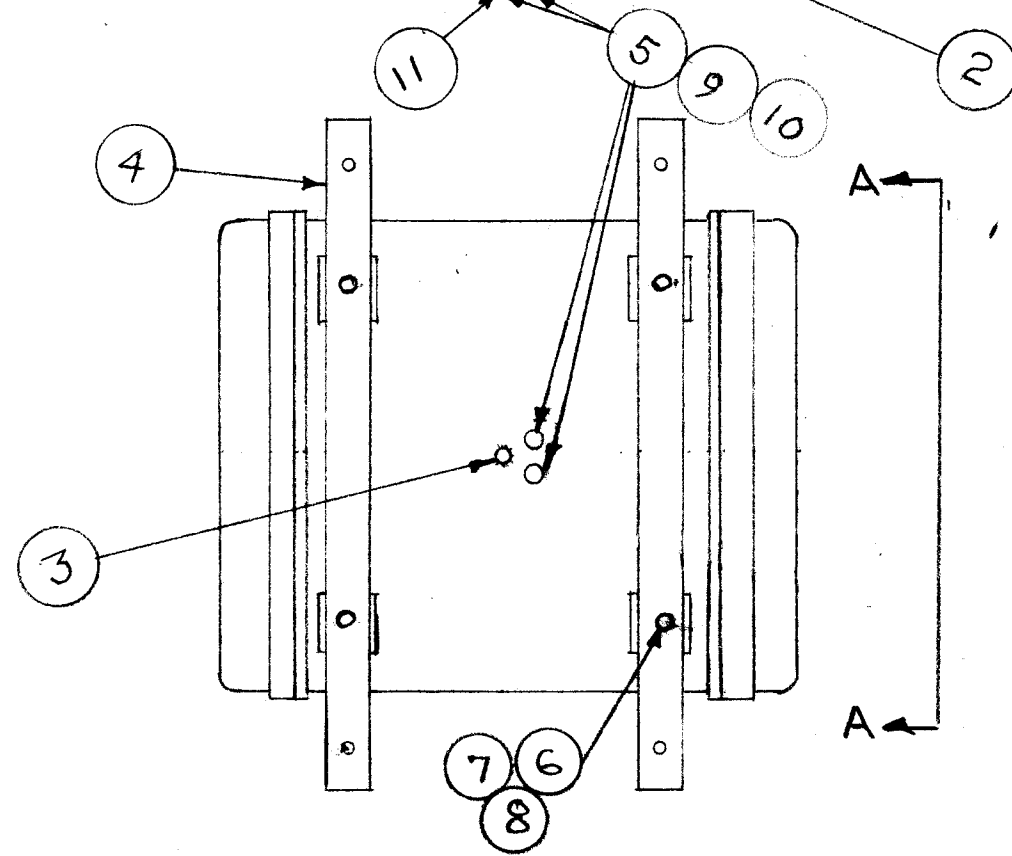
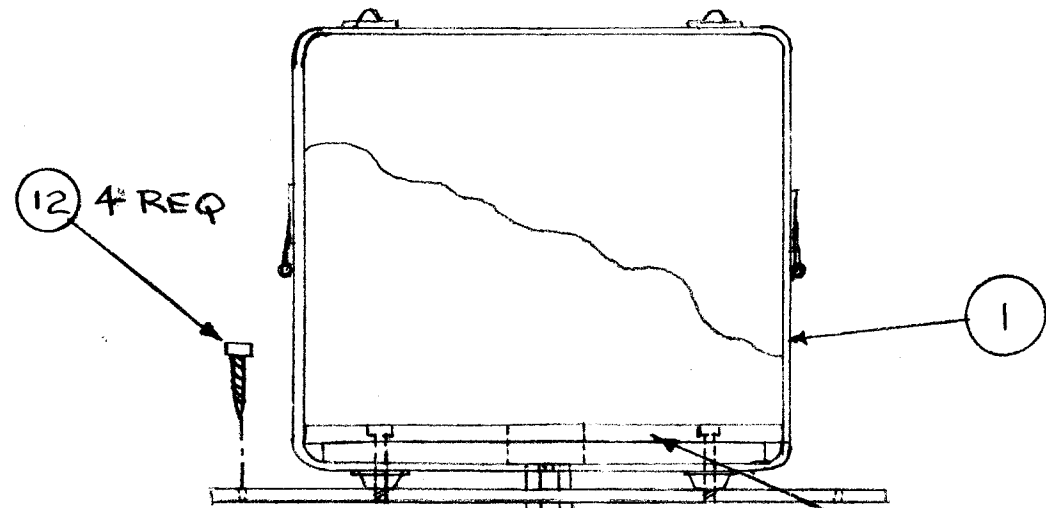


A
A5419

REVISIONS

SYM	DESCRIPTION	DATE	E.M.N. NO.	DRAFT	CHKD	APPD
Ø	ORIGINAL RELEASE FOR PRODUCTION	1/14/66	Ø			
A	IT. 11 WAS RY114-777	3-23-66	15995			

REAR VIEW "A-A"



BOTTOM VIEW

* THESE PARTS WILL BE SHIPPED AS LOOSE ITEMS.

*	4	12	SC111-7	BOLT, LAG
*	1	11	RY114-77700	STOPPER, BOTTLE
*	4	10	GA140-8N4	GASKET, RD
*	4	9	FW100-10AE	WASH, FLAT
*	4	8	LW531MRN	WASH, LOCK, SPLIT
*	4	7	SCHH3118BN4B	BOLT, MACH
*	4	6	FW31HBN	WASH, FLAT
*	2	5	PO206-2	STUFFING TUBE
*	2	4	PM1287	PLATE, UNIT MITG
*	1	3	HB103	BUTTON, PLUG, VENT
*	1	2	WD142	TRAY, MITG, BAT
*	1	1	CW106	CASE, MOD, BAT

REQ'D.	ITEM	PART NUMBER	DESCRIPTION	SYMBOL
--------	------	-------------	-------------	--------

LIST OF MATERIAL

MATERIAL		THE TECHNICAL MATERIEL CORP. MAMARONECK, NEW YORK			
FINISH		TITLE CASE ASSY, BATTERY			
UNLESS OTHERWISE SPECIFIED DIMENSIONS ARE IN INCHES AND INCLUDE CHEMICALLY APPLIED OR PLATED FINISHES		DRAWN R. Class	DATE 1-10-66	FINAL APPROVAL	DATE
DECIMALS .X ± .05 .XX ± .01 .XXX ± .005		CHECKED G. J. De	DATE 1-12-66	A5419	A
FRACTIONS ± 1/64 ANGLES ± 0° 30'		ELECT. DES. G. J. De	DATE 1-12-66		
TOLERANCES		MECH. DES.	DATE	SHEET	REV. LTR.

1	TOC-6	
Q'TY./UNIT	MODEL USED ON	ASS'Y. NO.
SCALE A	CODE	

THE CONTENTS OF THIS DRAWING ARE THE EXCLUSIVE PROPERTY OF THE TECHNICAL MATERIEL CORP. ITS UNAUTHORIZED USE OR REPRODUCTION IN WHOLE OR IN PART IS STRICTLY FORBIDDEN.

NOTES