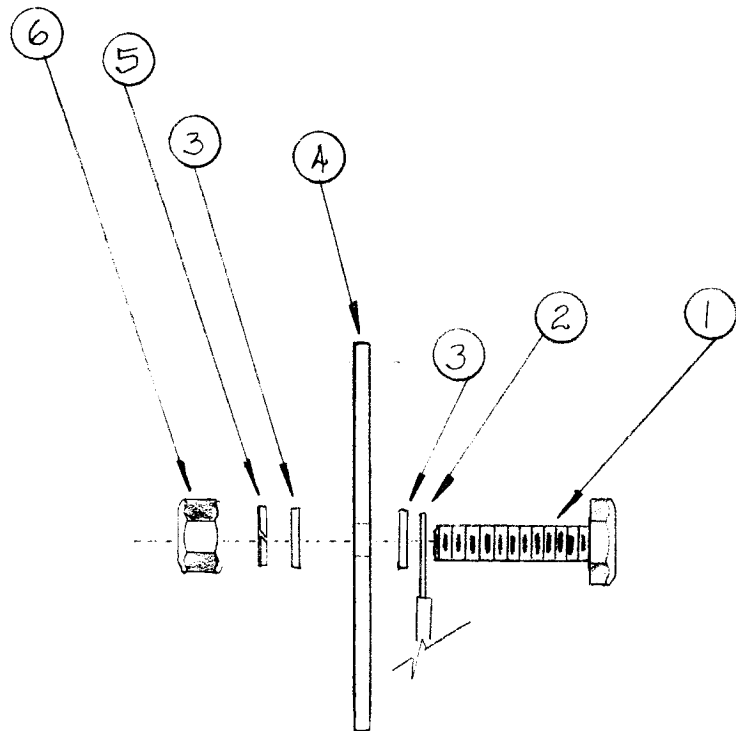


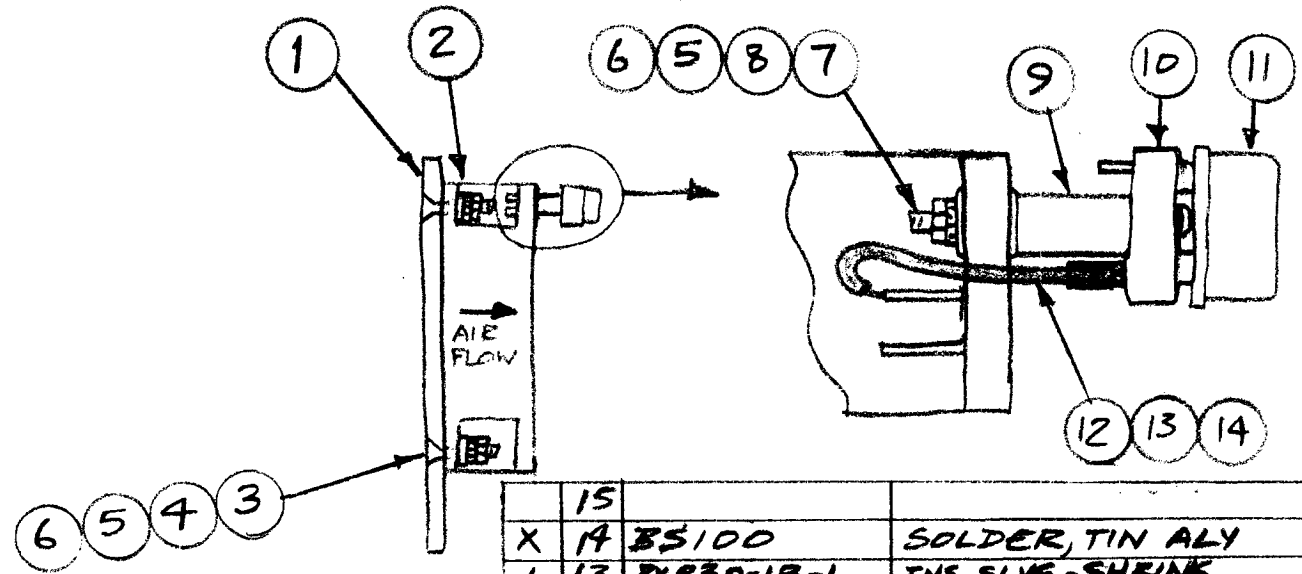
RE . PER UNIT	USED ON			A5412	Ø
	MODEL	ASS'Y. NO.	DATE		
1	AF105		1-25-66		



1	6	NTH2520BN14	NUT, PLN, HEX
1	5	LWS25MRN	WASH., LK, SPLIT
1	4	PX959	INS., RF FDTHRU
2	3	FW25HBN	WASH., FLAT
1	2	MS3284-19	STRAP, CONNTG.
1	1	SCHH2520B1/16	BOLT, MACH

							REQ.	ITEM	PART NO.	F. BUDETTI	DESCRIPTION	SYMBOL	
							/		THE TECHNICAL MATERIEL CORP. MAMARONECK. NEW YORK				
Ø	ORIGINAL PACKAGE FOR PRODUCTION	12/17/66		CU			/		TERM. ASSY, INPLT				
X	EXP. RELEASE	7-6-67		FSL			/						
SYM	DESCRIPTION	DATE	CH. NO.	DRAFTS	CHECKER	ENG. APP.	MATERIAL						
UNLESS OTHERWISE SPECIFIED DIMENSIONS ARE IN INCHES AND INCLUDE CHEMICALLY APPLIED OR PLATED FINISHES		SCALE DO NOT SCALE				/		/		FJL 1-25-66		71	
						TYPE & TEMPER		HEAT TREAT. SPEC.		DRAWN		CHECKED	
DECIMALS .X ± .05 .XX ± .01 .XXX ± .005		TOLERANCES		FRACTIONS ± 1/64 ANGLES ± 0° 30'		CODE		FINISH & SPEC. NO.		ELEC. DES. APP.		MECH. DES. APP.	
												A5412 Ø	

REQ. PER UNIT	USED ON			A 5428	A
	MODEL	ASS'Y. NO.	DATE		
1	TDC-7	A5434	1-28-66		

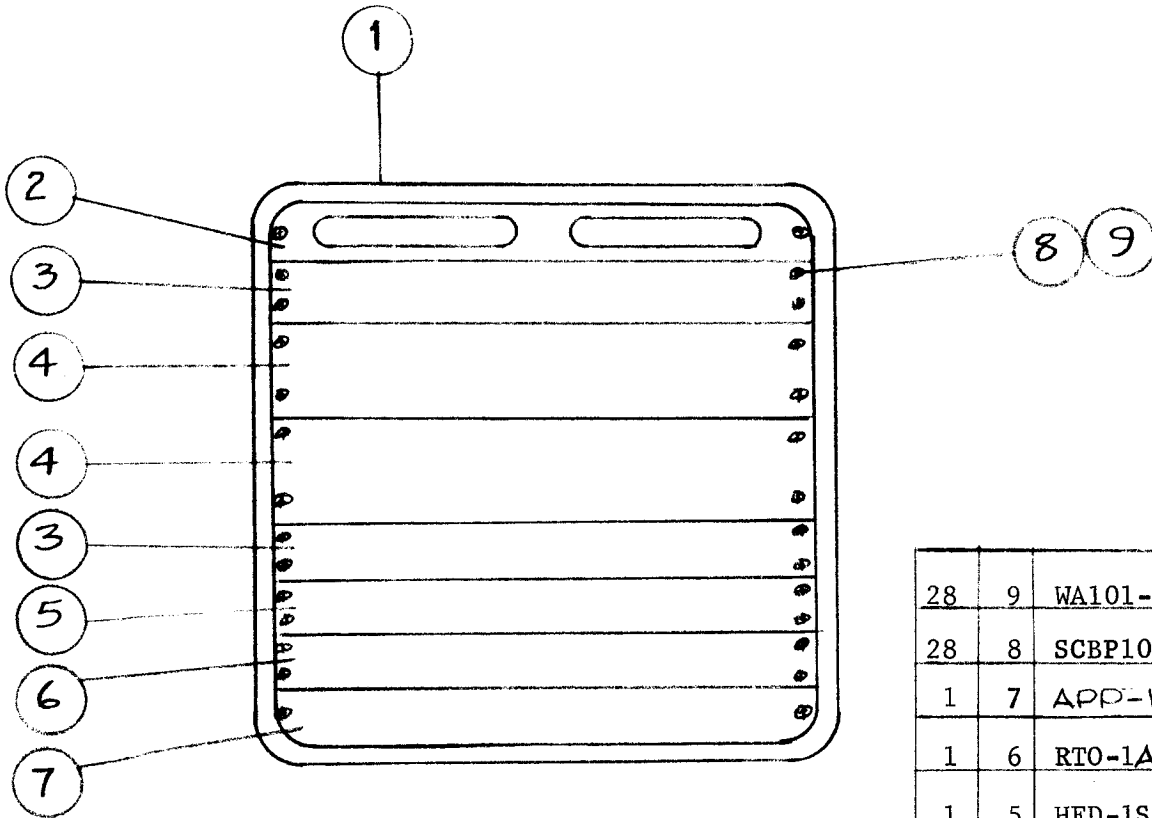


	15		
X	14	BS100	SOLDER, TIN ALY
1	13	PKB30-1B-1	INS SLVG-SHRINK
2	12	MWC18(16)40	WIRE, ELEC, INS
1	11	SS1091-35N0	SWITCH, THERMO
1	10	TS104-1	SOC, XTAL
1	9	TE117-31	SPACER, SLV
1	8	WA109-17	WASH-, NM
1	7	SCBP0440BN20	SCR, MACH
5	6	NTH0440BNB	NUT, PLN, HEX
5	5	LNE04MRN	WASH-, LK, EXT
4	4	FND04HBN	WASH-, FLAT
4	3	SCFP0440BN10	SCR, MACH
1	2	BL106-2	FAN, AXIAL
1	1	MS4869	PL, MTS, FAN

SYM	DESCRIPTION	DATE	CH. NO.	DRAFTS	CHECKER	ENG. APP.
A	ITEM 2 WAS BL106-4 ITEM 3 WAS SCBP0440BN8	5/17/66	16244	wpd	JCB	MM
Ø	ORIGINAL RELEASE FOR PRODUCTION	3/28/66		+	HUA	
UNLESS OTHERWISE SPECIFIED DIMENSIONS ARE IN INCHES AND INCLUDE CHEMICALLY APPLIED OR PLATED FINISHES		SCALE DO NOT SCALE				
DECIMALS .X ± .05 .XX ± .01 .XXX ± .005	TOLERANCES ± 1/64 ANGLES ± 0° 30'	CODE A				

REQ. ITEM	PART NO.	DOSE	DESCRIPTION	SYMBOL
		THE TECHNICAL MATERIEL CORP. MAMARONECK, NEW YORK		
STOCK SIZE		FAN/PLATE ASSY		
MATERIAL				
TYPE & TEMPER	HEAT TREAT. SPEC.	DRAWN	CHECKED	FINAL APPROVAL
		5-17-66	JCB 3/28/66	[Signature]
FINISH & SPEC. NO.		ELEC. DES. APP.	MECH. DES. APP.	
				A5428 A

REQ. PER UNIT	USED ON			A5432	A
	MODEL	ASS'Y. NO.	DATE		
1	COR-3				



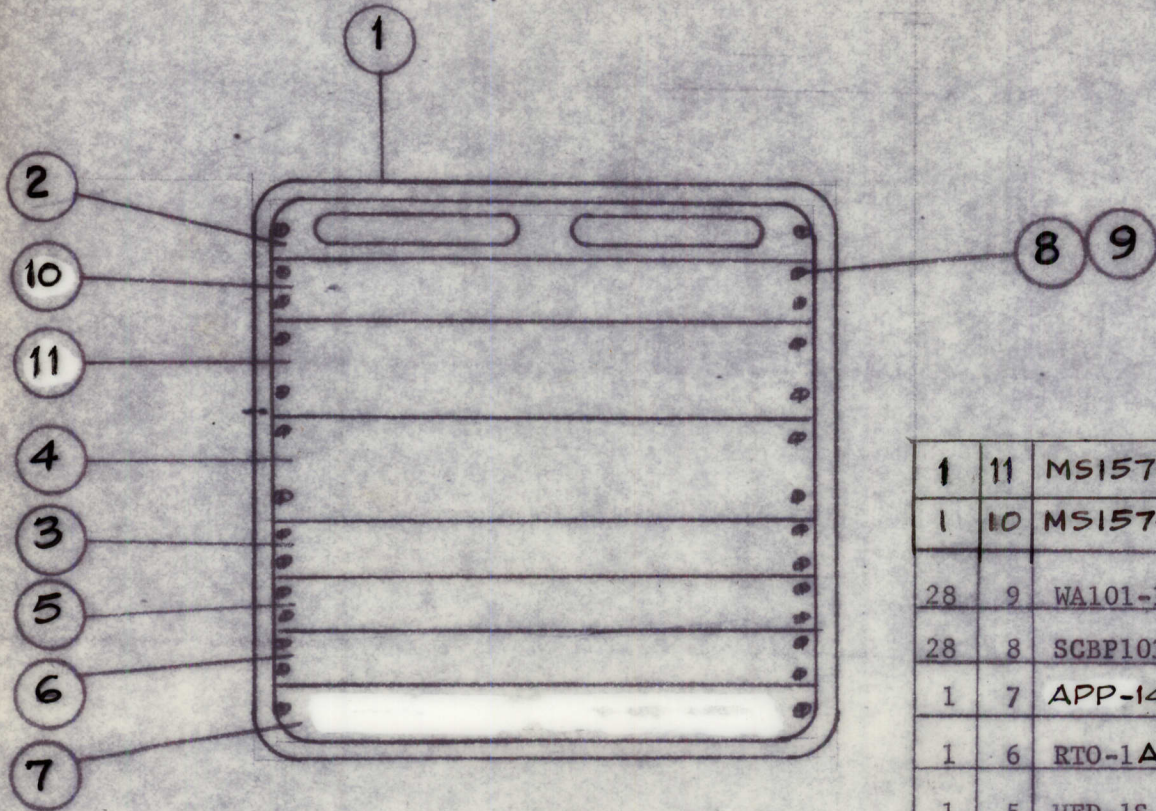
COVER REMOVED FOR CLARITY

28	9	WA101-11	WASH., NM
28	8	SCBP1032BN8	SCR, MACH
1	7	APP-14	AUXILIARY POWER PANEL
1	6	RT0-1A	TEST OSC
1	5	HFD-1S	HF DIST UNIT
2	4	CDN-3	CODAN
2	3	STR-2C	SB STRIP RCVR
1	2	A5418	PNL ASSY, FR, TOP
1	1	TOC-7	CASE, OP/TRANS

A	IT WAS A5417 ITG WAS RTO-1	5.17.66	16250	WFW	<i>[Signature]</i>	
<input checked="" type="checkbox"/>	ORIGINAL RELEASE	7/6/66			<i>[Signature]</i>	
SYM	DESCRIPTION	DATE	CH. NO.	DRAFTS	CHECKER	ENG. APP.
UNLESS OTHERWISE SPECIFIED DIMENSIONS ARE IN INCHES AND INCLUDE CHEMICALLY APPLIED OR PLATED FINISHES		SCALE NONE				
DECIMALS .X ± .05 .XX ± .01 .XXX ± .005	TOLERANCES	FRACTIONS ± 1/64 ANGLES ± 0° 30'	CODE			

REQ. ITEM	PART NO.	DESCRIPTION	SYMBOL
STOCK SIZE		THE TECHNICAL MATERIEL CORP. MAMARONECK. NEW YORK	
MATERIAL		COR-3 FNL ASSY	
TYPE & TEMPER	HEAT TREAT. SPEC.	DRAWN	CHECKED
FINISH & SPEC. NO.		ELEC. DES. APP.	MECH. DES. APP.
		L. GABEL 3-15-66	<i>[Signature]</i> 3/16/66
		FINAL APPROVAL	
		A5432 A	

REQ. PER UNIT	USED ON			A5435	A
	MODEL	ASS'Y. NO.	DATE		
1	COR-3A				



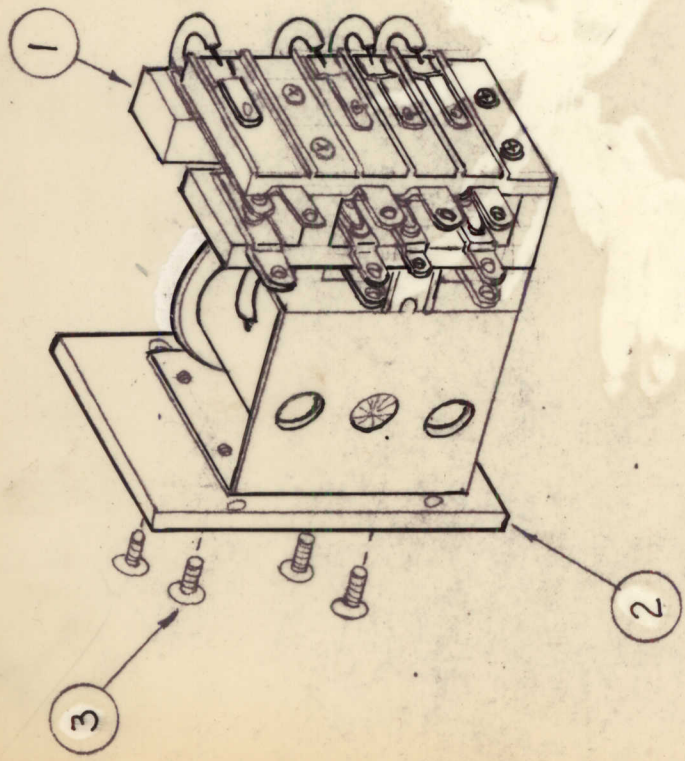
COVER REMOVED FOR CLARITY

1	11	MS157-2H	PNL, BLANK
1	10	MS157-1H	PNL, BLANK
28	9	WA101-11	WASH., NM
28	8	SCBP1032BN8	SCR, MACH
1	7	APP-14	PNL, AUX PWR
1	6	RTO-1A	TEST OSC
1	5	HFD-1S	HF DIST UNIT
1	4	CDN-3	CODAN
1	3	STR-2C	SB STRIP RCVR
1	2	A5418	PNL ASSY, FR, TOP
1	1	TOC-7	CASE, OP/TRANS

A	IT. 6, RTO-1A WAS RTO-1 ; IT. 7, APP-14 WAS A5417	5-31-66	16295	46A	<i>[Signature]</i>	<i>[Signature]</i>
Ø	ORIGINAL RELEASE	3/6/66			<i>[Signature]</i>	<i>[Signature]</i>
SYM	DESCRIPTION	DATE	CH. NO.	DRAFTS	CHECKER	ENG. APP.
UNLESS OTHERWISE SPECIFIED DIMENSIONS ARE IN INCHES AND INCLUDE CHEMICALLY APPLIED OR PLATED FINISHES		SCALE NONE				
DECIMALS .X ± .05 .XX ± .01 .XXX ± .005	TOLERANCES	FRACTIONS ± 1/64 ANGLES ± 0° 30'	CODE			

REQ. ITEM	PART NO.	DESCRIPTION	SYMBOL
STOCK SIZE		THE TECHNICAL MATERIEL CORP. MAMARONECK, NEW YORK	
MATERIAL		COR-3A FNL ASSY	
TYPE & TEMPER	HEAT TREAT. SPEC.	DRAWN	CHECKED
FINISH & SPEC. NO.		ELEC. DES. APP.	MECH. DES. APP.
		FINAL APPROVAL <i>[Signature]</i>	
		A5435 A	

REQ. PER UNIT	1	MODEL	TSTE-10K	USED ON	DATE
ASSY. NO.	AS 125	DATE	4-14-66	A 5481	



4	3	SCFP0632BN5	SCREW, MACHINE	SYMBOL
1	2	PX 943	PLATE, MTG RELAY	
1	1	RL165-H4	RELAY, ARM	
REQ. ITEM	PART NO.	F. BUDETTI DESCRIPTION		
STOCK SIZE		THE TECHNICAL MATERIEL CORP. MAMARONECK, NEW YORK		
MATERIAL		RELAY ARM. ASSY		
TYPE & TEMPER		G.D.L	checked	FINAL APPROVAL
HEAT TREAT. SPEC.		drawn	checked	
FINISH & SPEC. NO.		ELEC. DES. APP. MECH. DES. APP.		

SYM	DESCRIPTION	DATE	CH. NO.	DRAFTS	CHECKER	ENG. APP.
Ø	ORIGINAL RELEASE FOR PRODUCTION	4-29-66	Ø	WVO		
UNLESS OTHERWISE SPECIFIED DIMENSIONS ARE IN INCHES AND INCLUDE CHEMICALLY APPLIED OR PLATED FINISHES		SCALE		CODE		
TOLERANCES		FRACTIONS		ANGLES		
.X ± .05		± 1/64		± 0° 30'		
.XX ± .01						
.XXX ± .005						