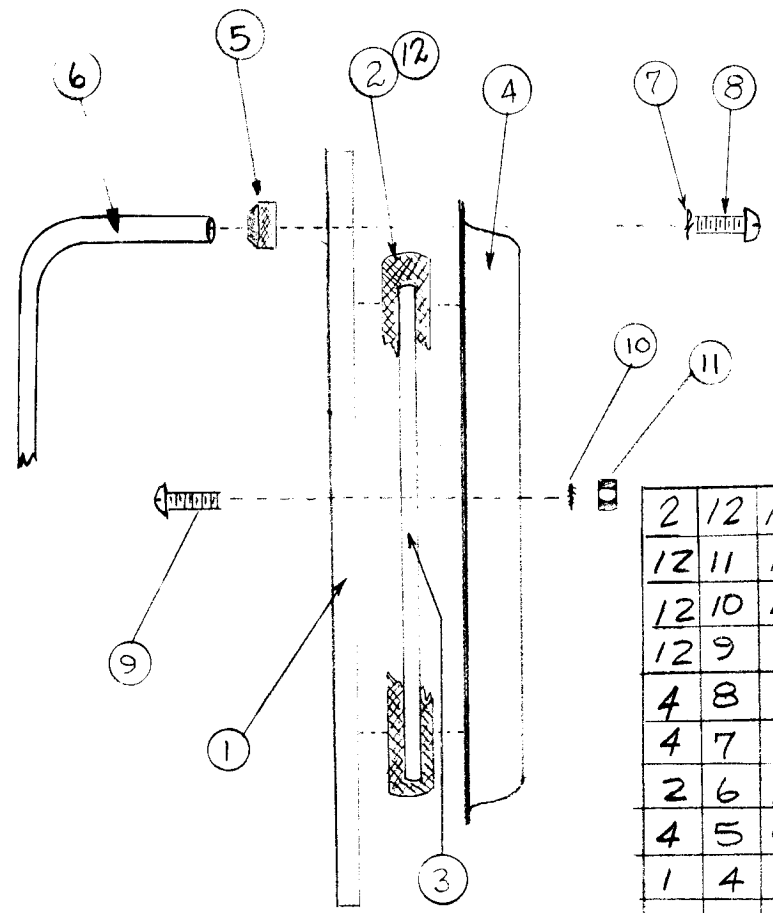


| | | | | | |
|---------------|----------|------------|----------|-------|---|
| REQ. PER UNIT | USED ON | | | A5206 | A |
| | MODEL | ASS'Y. NO. | DATE | | |
| 1 | TSTE-10K | AX580 | 12-11-65 | | |



| | | | |
|----|----|---------------|----------------|
| 2 | 12 | RY140-2-20.00 | RUB., CHAN |
| 12 | 11 | NTHØ832BN1Ø | NUT, PLN, HEX |
| 12 | 10 | LWEØ8MEN | LOCK WASHER |
| 12 | 9 | SCBPØ832BN6 | SCR, MACH |
| 4 | 8 | SCBP1Ø32BN6 | SCR, MACH |
| 4 | 7 | LWS1ØMEN | SPLIT WASHER |
| 2 | 6 | HA1Ø2-12BN | HANDLE |
| 4 | 5 | CU139-2B | HANDLE FERRULE |
| 1 | 4 | MS42Ø3 | WINDOW FRAME |
| 1 | 3 | GS101-2 | GLASS PLATE |
| 2 | 2 | RY14Ø-2-4.00 | RUB. CHAN. |
| 1 | 1 | MS4733 | FRONT PANEL |

| | | | | | | |
|---|------------------------------|---|-----------|--------|--------------------|--------------------|
| SYM | DESCRIPTION | DATE | CH. NO. | DRAFTS | CHECKER | ENG. APP. |
| A | ADD. IT. 12; IT. 3 WAS PX916 | 3/21/66 | 15988 | HLA | <i>[Signature]</i> | <i>[Signature]</i> |
| Ø | ORIGINAL RELEASE | 12/4/65 | | | | |
| UNLESS OTHERWISE SPECIFIED DIMENSIONS ARE IN INCHES AND INCLUDE CHEMICALLY APPLIED OR PLATED FINISHES | | SCALE DO NOT SCALE | | | | |
| DECIMALS .X ± .05 .XX ± .01 .XXX ± .005 | TOLERANCES | FRACTIONS ± 1/64 ANGLES ± 0° 30' | CODE # | # | | |

| | | | |
|--------------------|-------------------|--|-----------------|
| REQ. ITEM | PART NO. | DESCRIPTION | SYMBOL |
| # | | THE TECHNICAL MATERIEL CORP. MAMARONECK. NEW YORK | |
| # | | PA FRONT PANEL ASSY. | |
| # | | | |
| # | | F.S. LEVI III 12-11-65 | |
| TYPE & TEMPER | HEAT TREAT. SPEC. | DRAWN | CHECKED |
| # | | | |
| FINISH & SPEC. NO. | | ELEC. DES. APP. | MECH. DES. APP. |
| # | | | |
| | | A5206 A | |

| REQ. PER UNIT | USED ON | | | A5222 | B |
|---------------|------------|------------|---------|-------|---|
| | MODEL | ASS'Y. NO. | DATE | | |
| 1 | GPT-10K()8 | | 9/29/65 | | |
| 1 | GPT-10K-LF | | | | |

| TMC PART No. | ITEM 3 | USED ON | NOTE |
|--------------|--------|----------------|------------|
| A5222 | MS1635 | STD GPT-10K | — |
| A5222-2 | MS4202 | STD GPT-10K-LF | — |
| A5222-3 | MS1635 | STD GPT-40K | DELE IT. 1 |

NOTE: THIS NO. IS ASSIGNED TO PURCHASING FOR THE PACKAGE OF ITEMS SHOWN IN THE BUILDUP AS RECEIVED FROM THE VENDOR. THE LATEST REVISION OF ALL NUMBERS SHOWN SHOULD BE USED. SEE A2912 FOR STD SKINS.

| | | | |
|---|----|-----------|--------------------------------------|
| 1 | 10 | MS1920 | TRIM, FRONT, LEFT SIDE, HINGED, AUX |
| 2 | 9 | MS1672 | TRIM, REAR, TOP/BOTTOM |
| 1 | 8 | MS1671 | TRIM, REAR, LEFT SIDE, MAIN |
| 1 | 7 | MS1670 | TRIM, REAR, RIGHT SIDE, AUX |
| 1 | 6 | MS1669 | TRIM, REAR, CENTER |
| 1 | 5 | MS1637 | TRIM, FRONT, RIGHT SIDE, HINGED, AUX |
| 1 | 4 | MS1636 | TRIM, FRONT, BOTTOM |
| 1 | 3 | SEE CHART | TRIM, FRONT, TOP |
| 1 | 2 | MS1634 | TRIM, FRONT, LEFT SIDE, MAIN |
| 1 | 1 | MS1633 | TRIM, FRONT, RIGHT SIDE, MAIN |

| REQ. | ITEM | PART NO. | BUDETTI | DESCRIPTION | SYMBOL | | | | | | | | | | | | |
|---|-----------------------------------|---|--------------|---|---------|--------------------|----------|-----------------|----------|-----------------|----------|--------------------|--|-----------------|--|-----------------|--|
| B | A5222-3 ADDED | 12-6-67 18632 | HE. 10/7 FEM | THE TECHNICAL MATERIEL CORP. MAMARONECK. NEW YORK | | | | | | | | | | | | | |
| A | CHART ADDED ITEM 3 ADDED TO CHART | 1/5/66 15486 | X.V. GPT-10K | STOCK SIZE | | | | | | | | | | | | | |
| Q | ORIGINAL RELEASE FOR | | | TRIMS, 10K-PURCHASING PACKAGE | | | | | | | | | | | | | |
| SYM | DESCRIPTION | DATE | CH. NO. | DRAFTS | CHECKER | ENG. APP. | MATERIAL | ENG COORD | L. GABEL | 9/29/65 | Z. GABEL | FINAL APPROVAL | | | | | |
| UNLESS OTHERWISE SPECIFIED DIMENSIONS ARE IN INCHES AND INCLUDE CHEMICALLY APPLIED OR PLATED FINISHES | | SCALE | | TYPE & TEMPER | | HEAT TREAT. SPEC. | | DRAWN | | CHECKED | | FINISH & SPEC. NO. | | ELEC. DES. APP. | | MECH. DES. APP. | |
| DECIMALS .X ± .05 .XX ± .01 .XXX ± .005 | | FRACTIONS ± 1/64 ANGLES ± 0° 30' | | TOLERANCES | | FINISH & SPEC. NO. | | ELEC. DES. APP. | | MECH. DES. APP. | | A5222 | | B | | | |

| | | | | | |
|---------------------|------------|------------|---------|--------|---|
| REQ. PER UNIT | USED ON | | | A 5223 | Q |
| | MODEL | ASS'Y. NO. | DATE | | |
| 1 | GPT-40K()5 | | 9/29/65 | | |

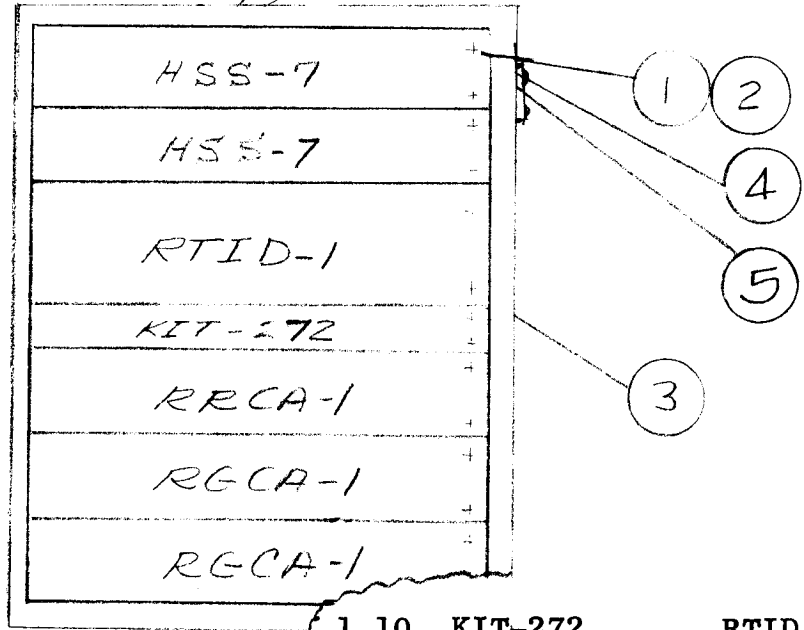
NOTE: THIS NO. IS ASSIGNED TO PURCHASING FOR THE PACKAGE OF ITEMS SHOWN IN THE BULLDUP AS RECEIVED FROM THE VENDOR.

THE LATEST REVISION OF ALL NUMBERS SHOWN SHOULD BE USED. SEE A2913 FOR STD SKINS.

| | | | |
|---|---|--------|---------------------------------------|
| 1 | 9 | MS2300 | TRIM, REAR, CENTER, PA |
| 2 | 8 | MS2053 | TRIM, REAR, TOP/BOTTOM, 40K |
| 1 | 7 | MS2052 | TRIM, REAR, RIGHT SIDE, PA |
| 1 | 6 | MS2051 | TRIM, FRONT, CENTER, 40K |
| 1 | 5 | MS2029 | TRIM, FRONT, BOTTOM, 40K |
| 1 | 4 | MS2028 | TRIM, FRONT, TOP, 40K |
| 1 | 3 | MS2027 | TRIM, FRONT, RIGHT SIDE, PA |
| 1 | 2 | MS2026 | TRIM, FRONT, LEFT SIDE, PA |
| 1 | 1 | MS2025 | TRIM, FRONT, RIGHT SIDE, POWER SUPPLY |

| | | | | | | | | | | | | | |
|---|-------------|-----------|---------|--------|---------|-----------|--|--|--|--------------------|--------------------|--|--------------------------------------|
| | | | | | | | | | | REQ. ITEM | PART NO. | DESCRIPTION | SYMBOL |
| | | | | | | | | | | | | THE TECHNICAL MATERIEL CORP. MAMARONECK, NEW YORK | |
| | | | | | | | | | | | STOCK SIZE | TRIMS, 40K-PURCHASING PACKAGE | |
| | | | | | | | | | | | MATERIAL | | |
| SYM | DESCRIPTION | DATE | CH. NO. | DRAFTS | CHECKER | ENG. APP. | | | | | ENG COORD | L. GABEL | FINAL APPROVAL <i>[Signature]</i> |
| UNLESS OTHERWISE SPECIFIED DIMENSIONS ARE IN INCHES AND INCLUDE CHEMICALLY APPLIED OR PLATED FINISHES | | SCALE | | | | | | | | 9/29/65 | <i>[Signature]</i> | | |
| DECIMALS | TOLERANCES | FRACTIONS | CODE | | | | | | | TYPE & TEMPER | HEAT TREAT. SPEC. | DRAWN | CHECKED |
| .X ± .05 | | ± 1/64 | | | | | | | | | | | |
| .XX ± .01 | | ANGLES | | | | | | | | | | | |
| .XXX ± .005 | | ± 0° 30' | | | | | | | | | | | |
| | | | | | | | | | | FINISH & SPEC. NO. | ELEC. DES. APP. | MECH. DES. APP. | A 5223 Q |

| | | | | |
|---------------|---------|------------|----------|--------------------|
| REQ. PER UNIT | USED ON | | | A 5239 \emptyset |
| | MODEL | ASS'Y. NO. | DATE | |
| 1 | RCWB-1 | | 10/22/65 | |



| | | | |
|----|----|-------------|--------------------|
| 1 | 10 | KIT-272 | RTID EXT KIT |
| 1 | 9 | RTID-1 | CHAN FREQ IND |
| 1 | 8 | RRCA-1 | RMTE RCVR CONT |
| 2 | 7 | RGCA-1 | RMTE GAIN CONT |
| 2 | 6 | HSS-7 | BRDG SPKR PNL |
| 4 | 5 | SFB0256BN3 | SCR, TAP., THD CTG |
| 1 | 4 | NP357-14 | PLATE, IDENT-COML |
| 1 | 3 | CY597 | CAB., EL EQUIP |
| 24 | 2 | WA101-11 | WASH., NM |
| 24 | 1 | SCBP1032BN8 | SCR, MACH |

Note 1: ALL ITEMS REFERENCED TO THIS NOTE SHALL BE CUSTOMER SUPPLIED.

NOTE 1

| REQ. | ITEM | PART NO. | DESCRIPTION | SYMBOL |
|--------------------|------|-------------------|---|--------------------|
| STOCK SIZE | | | THE TECHNICAL MATERIEL CORP. MAMARONECK. NEW YORK | |
| ORIGINAL RELEASE | | | FINAL ASSY., RCWB-1 | |
| ISSUE | ITEM | CHANGED FROM | DATE | CH. NO. |
| TOLERANCES | | | SCALE: | |
| DEC. DIM. \pm | | | MAXIMUM ALLOWABLE TOLERANCES HAVE BEEN DETERMINED AND ANY DEVIATIONS WILL BE CAUSE FOR REJECTION. | |
| FRAC. DIM. \pm | | | REMOVE ALL BURRS AND SHARP EDGES | |
| ANGULAR DIM. \pm | | | | |
| TYPE & TEMPER | | HEAT TREAT. SPEC. | DRAWN | CHECKED |
| FINISH & SPEC. N | | ELEC. DES. APP. | MECH. DES. APP. | |
| | | | | A 5239 \emptyset |

| | | | | | |
|---------------------|-------------|------------|----------|-------|---|
| REQ. PER UNIT | USED ON | | | A5274 | Ø |
| | MODEL | ASS'Y. NO. | DATE | | |
| 1 | GPT-10K-LFB | AX601 | 10/15/65 | | |

NOTE: THIS NO. IS ASSIGNED TO PURCHASING FOR THE PACKAGE OF ITEMS SHOWN IN THE BUILDUP AS RECEIVED FROM THE VENDOR.

THE LATEST REVISION OF ALL NUMBERS SHOWN SHOULD BE USED. SEE A5275 FOR TRIMS.

| | | | |
|----|----|----------|---------------------|
| 1 | 10 | MS4766 | PNL, TOP |
| 1 | 9 | MS4765 | PNL, R SD, MAIN |
| 1 | 8 | MS4764 | PNL, L SD, AUX |
| 1 | 7 | MS4751 | PNL, REAR, AUX, TOP |
| 1 | 6 | MS2748 | PNL, REAR, MAIN |
| 1 | 5 | MS2746 | PNL, REAR, AUX |
| 1 | 4 | MS2256-2 | COV, FIL, BLANK |
| 1 | 3 | MS2255-2 | COV, FIL, PERF |
| 16 | 2 | HB101-6B | BUTTON, PLUG |
| 8 | 1 | HB101-3B | BUTTON, PLUG |

| | | | | | | | | | | | | | | |
|---|------------------|---|---------|--------|---------|-----------|--|------|------|--------------------|--|---------------------|----------------|---|
| | | | | | | | | REQ. | ITEM | PART NO. | DESCRIPTION | SYMBOL | | |
| | | | | | | | | | | | THE TECHNICAL MATERIEL CORP. MAMARONECK. NEW YORK | | | |
| | | | | | | | | | | STOCK SIZE | SKINS PKG-ALUM | | | |
| | | | | | | | | | | MATERIAL | | | | |
| Ø | ORIGINAL RELEASE | 10/18/65 | | | | | | | | | ENG COORD | 2.gabul 10-18-65 | | |
| SYM | DESCRIPTION | DATE | CH. NO. | DRAFTS | CHECKER | ENG. APP. | | | | | DRAWN | CHECKED | FINAL APPROVAL | |
| UNLESS OTHERWISE SPECIFIED DIMENSIONS ARE IN INCHES AND INCLUDE CHEMICALLY APPLIED OR PLATED FINISHES | | SCALE | | | | | | | | | | | | |
| DECIMALS .X ± .05 .XX ± .01 .XXX ± .005 | TOLERANCES | FRACTIONS ± 1/64 ANGLES ± 0° 30' | CODE | | | | | | | | | | A5274 | Ø |
| | | | | | | | | | | FINISH & SPEC. NO. | ELEC. DES. APP. | MECH. DES. APP. | | |

| | | | | | |
|---------------------|-------------|------------|----------|-------|---|
| REQ. PER UNIT | USED ON | | | A5275 | Ø |
| | MODEL | ASS'Y. NO. | DATE | | |
| 1 | CPT-10K-LFB | AX601 | 10/15/65 | | |

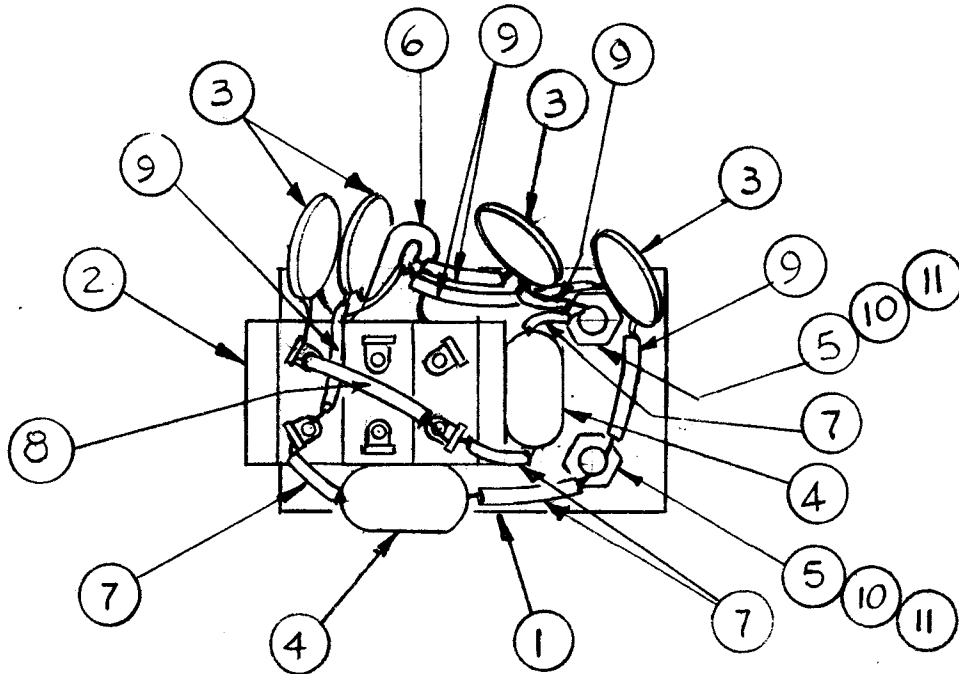
NOTE: THIS NO. IS ASSIGNED TO PURCHASING FOR THE PACKAGE OF ITEMS SHOWN IN THE BUILDUP AS RECEIVED FROM THE VENDOR.

THE LATEST REVISION OF ALL NUMBERS SHOWN SHOULD BE USED. SEE A5274 FOR SKINS.

| | | | |
|---|---|----------|-------------------------|
| 1 | 6 | MS4202-2 | TRIM,FR, TOP |
| 1 | 5 | MS1920-3 | TRIM,FR,HINGED,L SD,AUX |
| 1 | 4 | MS1637-3 | TRIM,FR,HINGED,R SD,AUX |
| 1 | 3 | MS1636-3 | TRIM,FR,BOT |
| 1 | 2 | MS1634-3 | TRIM,FR,L SD,MAIN |
| 1 | 1 | MS1633-3 | TRIM,FR,R SD,MAIN |

| | | | | | | | | | | | | | | | |
|---|------------------|---|---------|--------|---------|-----------|--|------|------|------------|--|----------------------|-----------------|---------|----------------|
| | | | | | | | | REQ. | ITEM | PART NO. | DESCRIPTION | SYMBOL | | | |
| | | | | | | | | | | | THE TECHNICAL MATERIEL CORP. MAMARONECK. NEW YORK | | | | |
| | | | | | | | | | | STOCK SIZE | | | | | |
| | | | | | | | | | | | | TRIMS PKG-ALUM | | | |
| Ø | ORIGINAL RELEASE | 10/18/65 | | | | | | | | | | | | | |
| SYM | DESCRIPTION | DATE | CH. NO. | DRAFTS | CHECKER | ENG. APP. | | | | MATERIAL | | | | | |
| UNLESS OTHERWISE SPECIFIED DIMENSIONS ARE IN INCHES AND INCLUDE CHEMICALLY APPLIED OR PLATED FINISHES | | SCALE | | | | | | | | | ENG CO ORD | Z. Gabul 10-18-65 | M. May 10/16/65 | | |
| | | | | | | | | | | | TYPE & TEMPER | HEAT TREAT. SPEC. | DRAWN | CHECKED | FINAL APPROVAL |
| DECIMALS .X ± .05 .XX ± .01 .XXX ± .003 | TOLERANCES | FRACTIONS ± 1/64 ANGLES ± 0° 30' | CODE | | | | | | | | | | | | |
| | | | | | | | | | | | FINISH & SPEC. NO. | ELEC. DES. APP. | MECH. DES. APP. | A5275 | Ø |

| APPLICATION | | | REVISIONS | | | | | | | |
|-------------|---------------|-----------|-----------|-----------------------|---------|----------|-------|------|------|--|
| QTY | MODEL USED ON | ASS'Y NO. | LTR | DESCRIPTION | DATE | E.M.N.NO | DRAFT | CHKD | APPD | |
| | SWCB-3K | A5265 | X | EXP. RELEASE | 3-1-63 | - | G.D.L | | | |
| | | | Ø | ORIG RELEASE FOR PROD | 3-31-67 | Ø | CV | | | |



| | | | | |
|---|----|-------------|----------------------|----------|
| 2 | 11 | LWE04MRN | LOCKWASHER, EXTERNAL | |
| 2 | 10 | SCBP0440BN5 | SCREW, MACHINE | |
| X | 9 | PX104-4-034 | INS SLVG | GRN |
| X | 8 | MWC22(7)U0 | WIRE, ELEC INS | BLK |
| X | 7 | PX104-3-034 | INS SLVG | RED |
| 1 | 6 | TE129 | TERM LUG | |
| 2 | 5 | TE102-2 | TERM LUG INS | |
| 2 | 4 | CL140-2 | COIL, RF, FXD | |
| 4 | 3 | CC100-16 | CAPACITOR, CERAMIC | |
| 1 | 2 | ST105 | SWITCH, TOGGLE | 57001A,B |
| 1 | 1 | MS3499 | PLATE, MOUNTING | |

L7001
L7002

C7005
C7008

| UNLESS OTHERWISE SPECIFIED DIMENSIONS ARE IN INCHES AND INCLUDE CHEMICALLY APPLIED OR PLATED FINISHES | | REQ'D | ITEM | PART NUMBER | DESCRIPTION | SYM. |
|---|--|---|------|---|--|------|
| LIST OF MATERIAL | | | | | | |
| DECIMALS .X ± .05 .XX ± .01 .XXX ± .005 FRACTIONS 1/64 ANGLES 0°-30° | | APPROV. <i>[Signature]</i> MECH. DES. <i>[Signature]</i> ELECT. DES. <i>[Signature]</i> CHECKED <i>[Signature]</i> DRAWN <i>[Signature]</i> | | DATE 3/30/67 DATE DATE DATE DATE 3-1-67 | THE TECHNICAL MATERIEL CORP. MAMARONECK, NEW YORK SWR/KW SWITCH ASSY | |

| | | | | | | | |
|--|--|------------------------|--|------------------|---------------------------------|-------------------------|-------------------|
| NOTICE TO PERSONS RECEIVING THIS DRAWING THE TECHNICAL MATERIEL CORPORATION claims proprietary right in the material disclosed hereon. This drawing is issued in confidence for engineering information only and may not be reproduced or used to manufacture anything shown hereon without permission from THE TECHNICAL MATERIEL CORPORATION to the user. This drawing is loaned for mutual assistance and is subject to recall at any time. | | | | SIZE A | CODE IDENT. NO. 82679 | DWG NO. A5287 | ISSUE Ø |
| SCALE 1:1 | | MIL <i>[Signature]</i> | | SHEET | | OF | |