

SYMBOL(S)	ITEM NO.	USED TO MOUNT	QTY	USED ON					
				REQ. PER UNIT	MODEL	ASS'Y. NO.	DATE		
				1	BSP-5		6/29/65	A5123	B
AR101,102	1		2						
DS101,102	2		2						
W101	4		1						
	5	HA102	4						
XF101,102	6		2						
F101,102	7		2						
F101,102	8		2						
LS101,102	11		2						
	12	HA102	4						
	13	FOR RV4	2						
	14	LS107	2						
	15	TS175 & RV4 WRG	4	2	21	TS175-1	LIGHT,IND-WHT		
R101-S101	17		2	4	20	SFB0256SN3	SCR TAP.,THD CTG		
R102-S102				4	19	SCBP1032BN8	SCR,MACH		
	18	AZ102,LS107, MS3920	8	8	18	SCBP0632BN8	SCR,MACH		
				2	17	RV4NBYS503C	RES,VAR-COMP		
	19	HA102	4	1	16	NP102-77	PLATE,IDENT		
	20	NP102	4	4	15	MWC22/7/U1	WIRE,ELEC,INS		
XDS101,102	21			2	14	MS3920	GRILLE,SPKR		
				2	13	MP123-3FB	KNOB		
				4	12	LWS10MRN	WASH.,LK,SPLIT		
				2	11	LS107-2	LDSPKR,PM		
				1	10	LD1920/MS4620	PNL,FRONT		
				2	9	HA102-11BN	HDL,BOW		
				2	8	FU102-.1	FUSE,CTG,.1A-115VAC		
				2	7	FU102-.062	FUSE,CTG,.062A-230VAC		
				2	6	FH100-1	FUSEHOLDER		
				4	5	CU139-2B	FRL,HDL		
				1	4	CA884-4	CBL ASSY,SP,AC		
					3	BS100	SOLDER,TIN ALY		
				2	2	BI111-2	LAMP,GLOW		
				2	1	AZ102	AMPL,AF		

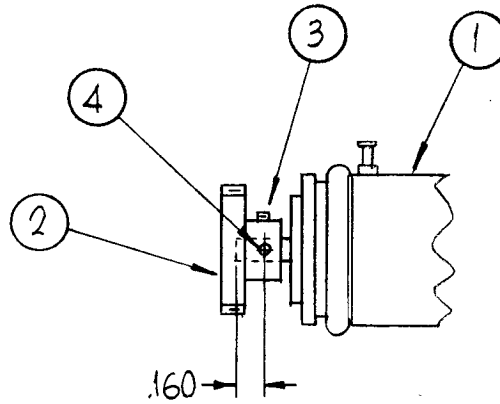
SEE NOTE 1 {

NOTES:

1. USE ITEM 7 OR 8 AS REQUIRED.

REQ.	ITEM	PART NO.	DESCRIPTION	SYMBOL
B	IT. 8 WAS FU102-.062 IT. 7 WAS FU102-.032	3-16-66 15964	MPH QCB NAK	
A	IT. 7 WAS .062 IT. 8 WAS .1	1/31/66 15630	HLA QCB NAK	
Ø	ORIGINAL RELEASE FOR PRODUCTION	6/2	Ø	
SYM	DESCRIPTION	DATE	CH. NO.	DRAFTS
UNLESS OTHERWISE SPECIFIED DIMENSIONS ARE IN INCHES AND INCLUDE CHEMICALLY APPLIED OR PLATED FINISHES		SCALE	CHECKER	ENG. APP.
DECIMALS .X ± .05 .XX ± .01 .XXX ± .005	FRACTIONS ± 1/64 ANGLES ± 0° 30'	TOLERANCES	TYPE & TEMPER	HEAT TREAT. SPEC.
ELEC. DES. APP.		MECH. DES. APP.	FINISH & SPEC. NO.	ENG COORD
L. GABEL 6-30-65 L.G.		DRAWN	CHECKED	FINAL APPROVAL
A5123		B		

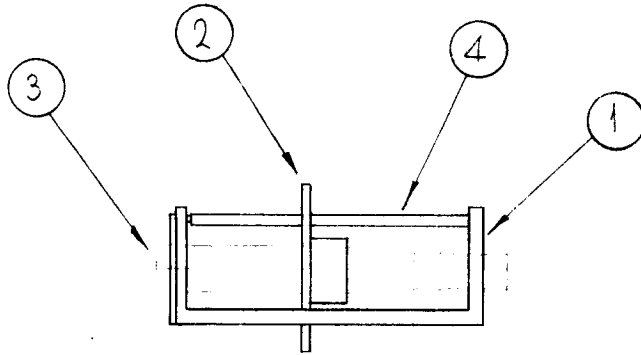
REQ. PER UNIT	USED ON			A5163	Ø
	MODEL	ASS'Y. NO.	DATE		
1	TST-10K		10-21-65		



1	4	PN							
1	3	SLHC0256SN2	SETSCREW						
1	2	GR205-26	GEAR, SPUR, HVB						
1	1	RV118-2-102	RESISTOR, VARIABLE, PRECISION						
REQ.	ITEM	PART NO.	F. BUDETTI	DESCRIPTION	SYMBOL				
STOCK SIZE			THE TECHNICAL MATERIEL CORP. MAMARONECK. NEW YORK						
MATERIAL			RESISTOR, ASSY, CAP.						
UNLESS OTHERWISE SPECIFIED DIMENSIONS ARE IN INCHES AND INCLUDE CHEMICALLY APPLIED OR PLATED FINISHES			SCALE	1:1					
DECIMALS .X ± .05 .XX ± .01 .XXX ± .005			TOLERANCES		FRACTIONS ± 1/64 ANGLES ± 0° 30'	CODE	A		
FINISH & SPEC. NO.			ELEC. DES. APP.	MECH. DES. APP.	A5163		Ø		

Ø	ORGANIZATION FOR PRODUCTION	12/17/68	CH. NO.	DRAFTS	CHECKER	ENG. APP.
SYM	DESCRIPTION	DATE	CH. NO.	DRAFTS	CHECKER	ENG. APP.

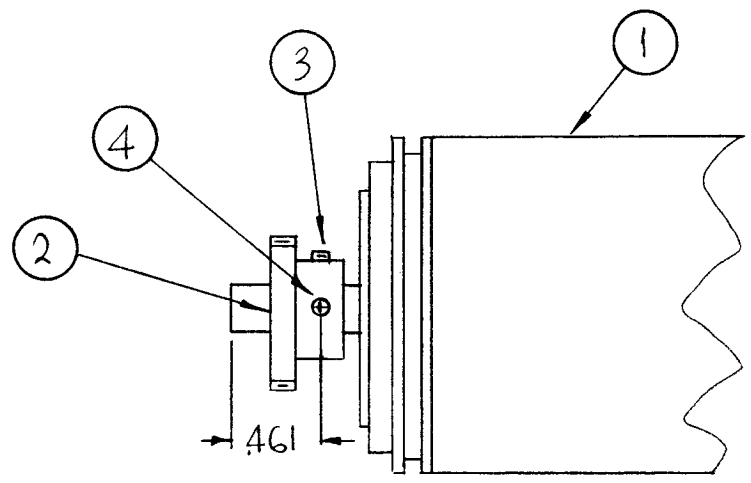
REQ. PER UNIT	USED ON			A5164	Ø
	MODEL	ASS'Y. NO.	DATE		
1	TST-10K		9-15-65		



1	4	PM1221	SHAFT, PRECISION	
1	3	PM1220	STUD, THREADED	
1	2	PM1219	WHEEL, DIRECTIONAL	
1	1	PM1218	HOUSING, SWITCH	

SYM	DESCRIPTION	DATE	CH. NO.	DRAFTS	CHECKER	ENG. APP.	REQ. ITEM	PART NO.	F. BUDETTI	DESCRIPTION	SYMBOL	
Ø	APPROVAL RELEASE FOR PRODUCTION	12/17/68		CU		HDE						
UNLESS OTHERWISE SPECIFIED DIMENSIONS ARE IN INCHES AND INCLUDE CHEMICALLY APPLIED OR PLATED FINISHES							SCALE					
							1:1					
DECIMALS .X ± .05 .XX ± .01 .XXX ± .005							TOLERANCES		FRACTIONS ± 1/64 ANGLES ± 0° 30'		CODE	A
							TYPE & TEMPER	HEAT TREAT. SPEC.	DRAWN	CHECKED	FINAL APPROVAL	
							FINISH & SPEC. NO.	ELEC. DES. APP.	MECH. DES. APP.	A5164 Ø		

REQ. PER UNIT	USED ON			A5166	Ø
	MODEL	ASS'Y. NO.	DATE		
1	TSTE-10K		10-21-65		



1	4	PN59-062-8	PIN, SPRING		
1	3	SLHC0632SN3	SETScrew		
1	2	GR205-18	GEAR, SPUR, HUB		
1	1	MO128	MOTOR, GENERATOR		
REQ.	ITEM	PART NO.	F BUDETTI	DESCRIPTION	SYMBOL
STOCK SIZE			THE TECHNICAL MATERIEL CORP. MAMARONECK. NEW YORK		
MATERIAL			MOTOR ASS'Y, CAP.		
TYPE & TEMPER		HEAT TREAT. SPEC.	DRAWN	CHECKED	FINAL APPROVAL
FINISH & SPEC. NO.		ELEC. DES. APP.	MECH. DES. APP.	A5166 Ø	

Ø	UNLESS OTHERWISE SPECIFIED DIMENSIONS ARE IN INCHES AND INCLUDE CHEMICALLY APPLIED OR PLATED FINISHES	DATE	CH. NO.	DRAFTS	CHECKER	ENG. APP.
SYM	DESCRIPTION	12/17/68		W		Ade
TOLERANCES		SCALE	A			
DECIMALS	FRACTIONS	CODE				
.X ± .05	± 1/64	A				
.XX ± .01	ANGLES					
.XXX ± .005	± 0° 30'					

REQ. PER UNIT	USED ON			A5197	A
	MODEL	ASS'Y. NO.	DATE		
1	GPT-10K-RE		9/15/65		

1 GPT-10K-Z

NOTE: THIS NO. IS ASSIGNED TO PURCHASING FOR THE PACKAGE OF ITEMS SHOWN IN THE BUILDUP AS RECEIVED FROM THE VENDOR. THE LATEST REVISION OF ALL NUMBERS SHOWN SHOULD BE USED.

36	13	HB101-6B	BUTTON, PLUG-7/8	
8	12	HB101-3B	BUTTON, PLUG-1/2	
	1	11	MS4751	PNL, REAR, AUX FR, TOP
	1	10	MS2748	PANEL, REAR, MAIN
	1	9	MS2746	PANEL, REAR, AUX
	2	8	MS2257	SPACER, DOOR-U/O MS2118, 2119
	2	7	MS2256	COVER, FILTER, BLANK-U/O MS2116
	1	6	MS2255	COVER, FILTER-U/O MS2117
	1	5	MS2119	DOOR, FRONT, AUX
	1	4	MS2118	DOOR, FRONT, MAIN
	1	3	MS2117	PANEL, LEFT SIDE, AUX
	1	2	MS2116	PANEL, RIGHT SIDE, MAIN
	1	1	MS1699	PANEL, TOP

							REQ. ITEM	PART NO.	BUDETTI	DESCRIPTION	SYMBOL	
							THE TECHNICAL MATERIEL CORP. MAMARONECK. NEW YORK					
							STOCK SIZE					
							SKINS-PURCHASING PACKAGE					
							GPT-10K					
							ENG. COORD	L. GABEL	FINAL APPROVAL			
							TYPE & TEMPER	HEAT TREAT. SPEC.	DRAWN	CHECKED		
							FINISH & SPEC. NO.		ELEC. DES. APP.	MECH. DES. APP.	A5197	A
UNLESS OTHERWISE SPECIFIED DIMENSIONS ARE IN INCHES AND INCLUDE CHEMICALLY APPLIED OR PLATED FINISHES		SCALE										
DECIMALS .X ± .05 .XX ± .01 .XXX ± .005	TOLERANCES		FRACTIONS ± 1/64 ANGLES ± 0° 30'	CODE								

REQ. PER UNIT	USED ON			A5198	Ø
	MODEL	ASS'Y. NO.	DATE		
1	GPT-10K-RE		9/15/65		

1 GPT-10K-Z

NOTE: THIS NO. IS ASSIGNED TO PURCHASING FOR THE PACKAGE OF ITEMS SHOWN IN THE BUILDUP AS RECEIVED FROM THE VENDOR. THE LATEST REVISION OF ALL NUMBERS SHOWN SHOULD BE USED.

1	6	MS1920	TRIM, FRONT, LEFT SIDE, HINGED, AUX
1	5	MS1637	TRIM, FRONT, RIGHT SIDE, HINGED, AUX
1	4	MS1636	TRIM, FRONT, BOTTOM
1	3	MS1635	TRIM, FRONT, TOP
1	2	MS1634	TRIM, FRONT, LEFT SIDE, MAIN
1	1	MS1633	TRIM, FRONT, RIGHT SIDE, MAIN

							REQ. ITEM	PART NO.	BUDETTI	DESCRIPTION	SYMBOL	
							STOCK SIZE		THE TECHNICAL MATERIEL CORP. MAMARONECK. NEW YORK			
									TRIMS-PURCHASING PACKAGE			
									GPT-10K			
SYM	DESCRIPTION	DATE	CH. NO.	DRAFTS	CHECKER	ENG. APP.	MATERIAL		ENG COORD	29.9-1565 L. GABEL	<i>[Signature]</i>	
UNLESS OTHERWISE SPECIFIED DIMENSIONS ARE IN INCHES AND INCLUDE CHEMICALLY APPLIED OR PLATED FINISHES		SCALE					TYPE & TEMPER		HEAT TREAT. SPEC.	DRAWN	CHECKED	FINAL APPROVAL
DECIMALS .X ± .05 .XX ± .01 .XXX ± .005	TOLERANCES	FRACTIONS ± 1/64 ANGLES ± 0° 30'	CODE			FINISH & SPEC. NO.		ELEC. DES. APP.	MECH. DES. APP.	A5198	Ø	