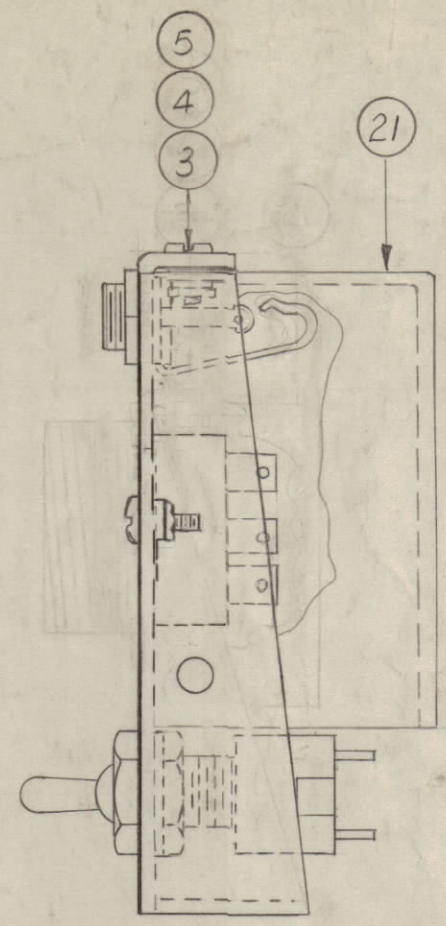
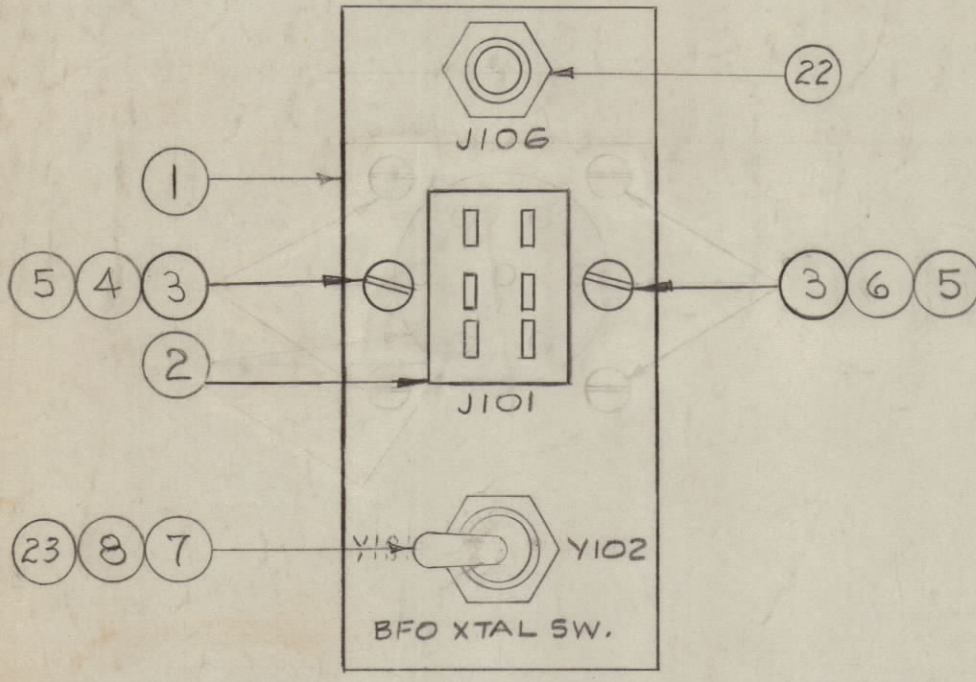
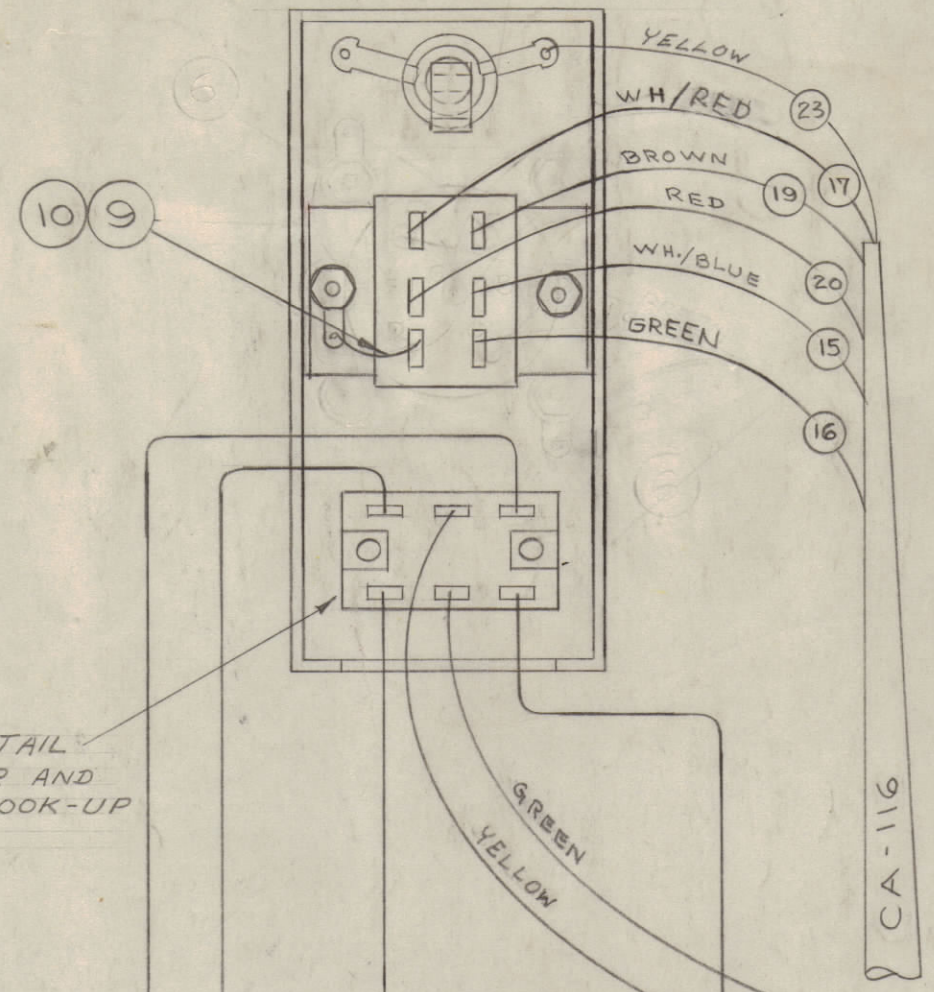


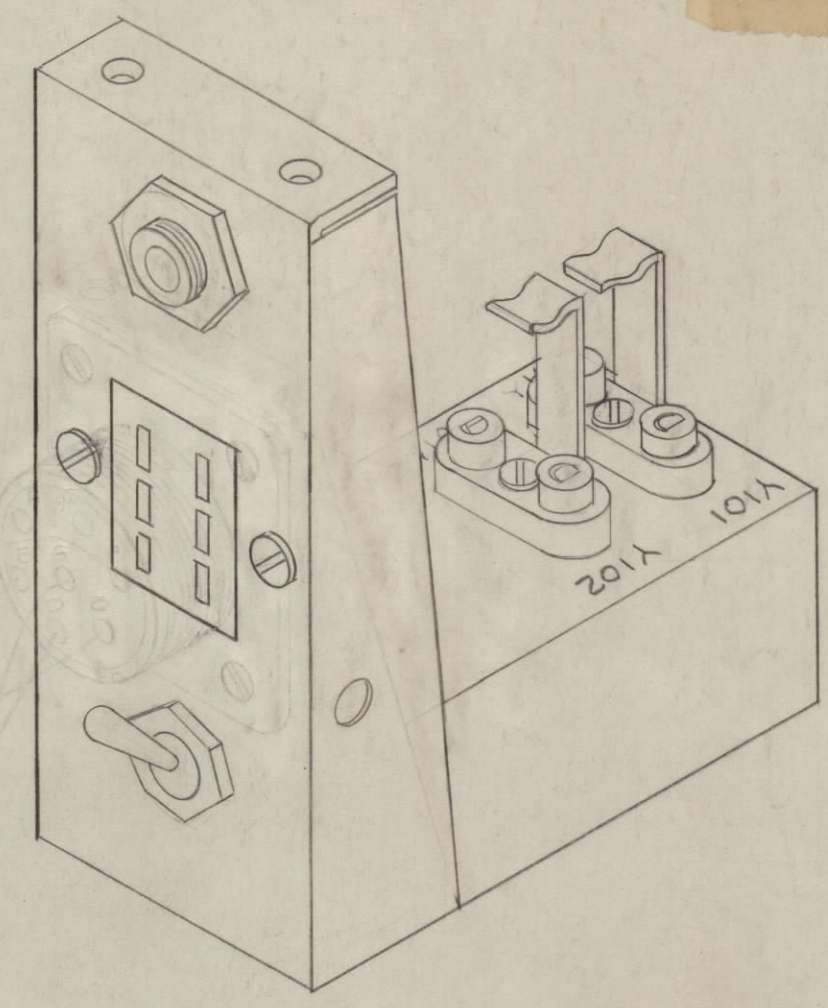
IF IT IS FOUND DESIRABLE TO CHANGE ANY TOLERANCE OR OTHER DETAIL SPECIFIED ON THIS DRAWING NOTIFY THE PURCHASER PROMPTLY.
 MAXIMUM ALLOWABLE TOLERANCES HAVE BEEN DETERMINED AND DEVIATIONS WILL BE CAUSE FOR REJECTION. REMOVE ALL BURRS AND SHARP EDGES



WIRE NUMBERS SHOWN CORRESPOND TO WIRE NUMBERS ON CABLE DWG.



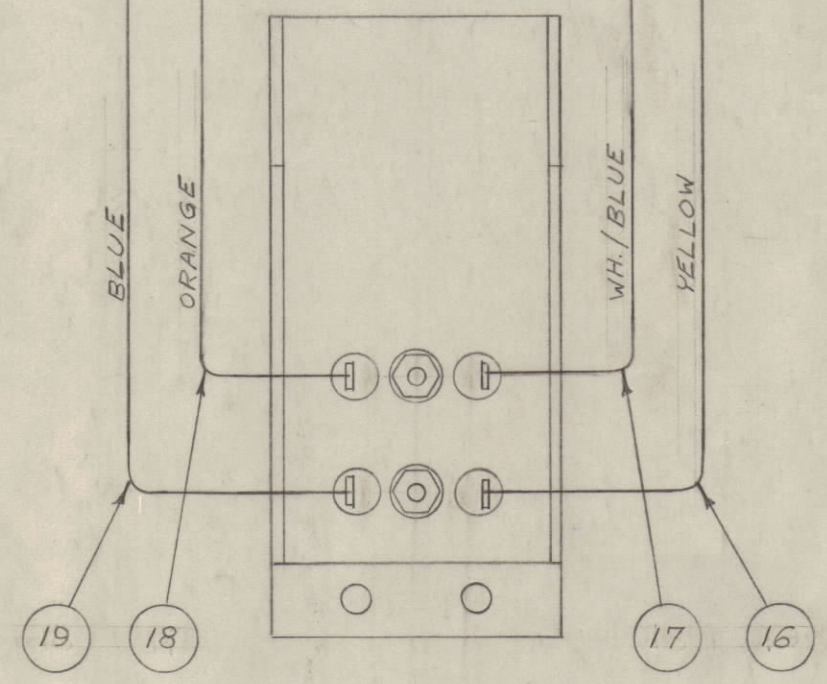
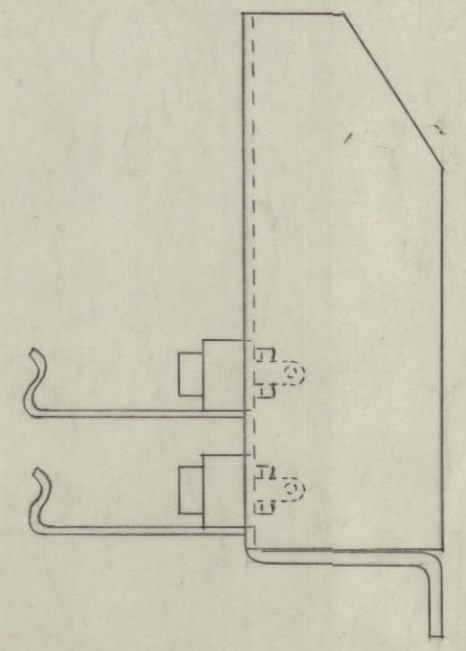
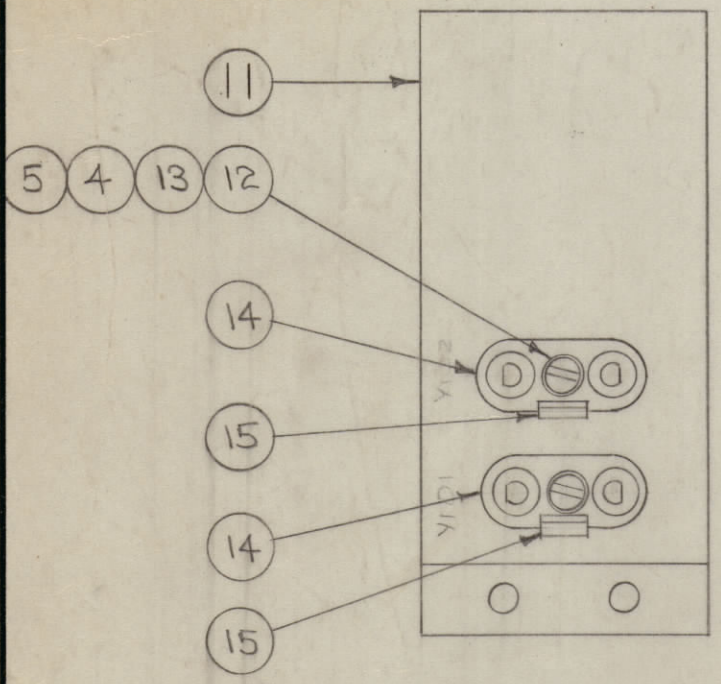
SEE S-105 DETAIL FOR RESISTOR AND CONDENSER HOOK-UP



TO TERM. BD. ON UNDERSIDE OF MAIN P.S. CHASSIS

1"	26	PX-104-1-034	INSULATION SLEEVING (BLK)	
1	25	CM20C151J	CAPACITOR, FIXED	C122
1	24	RC20GF474K	RESISTOR, FIXED	R117
1	23	TE-129	LUG, GROUND	
1	22	JJ-034	JACK, PHONE	J106

A-594 E

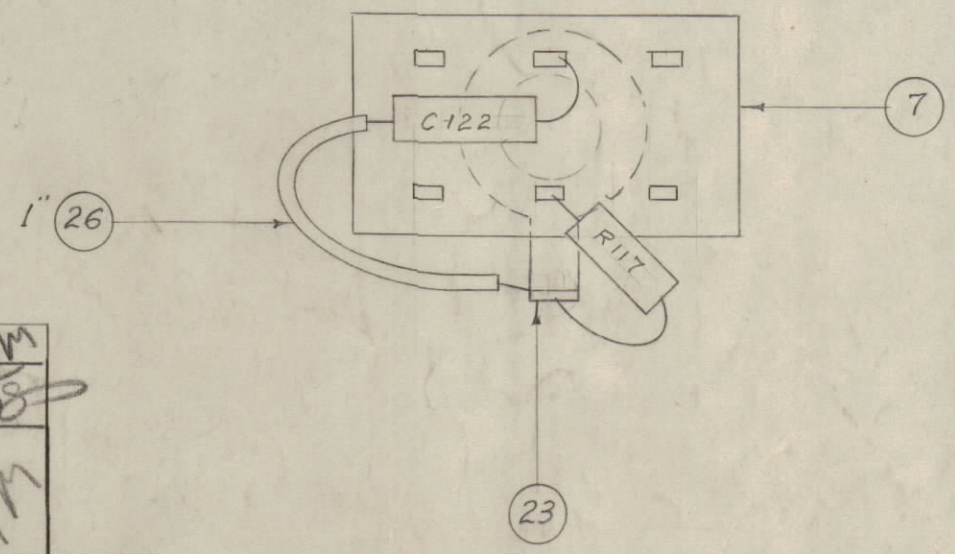


1	21	MS-295	COVER PLUG, P.S.	
X	20	BS-100	SOLDER, SOFT (CONNECTIONS)	
3"	19	MWC 22(7)U6	CABLE, INSULATED (BLU)	
3"	18	MWC 22(7)U3	" , " (OR.)	
3"	17	MWC 22(7)U96	" , " (WH/Red)	
3"	16	MWC 22(7)U4	" , " (YEL.)	
2	15	FP-109	CLAMP, XTAL.	
2	14	TS-104-1	SOCKET, XTAL	XY-101 102
2	13	WA-109-17	WASHER, FIBER.	
2	12	SCBS0440BN7	SCREW, MACHINE	
1	11	LD-379	STAMPING, BFO XTAL BRKT.	
X	10	FX-104-1-022	INSULATION, SLEEVING (BLK)	
X	9	WL-100-7	WIRE, BUSS BAR (22 GA.)	
1	8	LWIS0MRN	WASHER, LOCK.	
1	7	ST22N	SWITCH, TOGGLE	S-105
1	6	TE-104-1	TERMINAL, LOCKING	
4	5	NTH0440BN8	NUT, HEX.	
3	4	LWS04MRN	WASHER, LOCK. SPLIT	
2	3	SCBS0440BN4	SCREW, MACHINE	
1	2	JJ-121-2	CONNECTOR, FEMALE	
1	1	LD-378	STAMPING, PLUG BRKT.	

(MS-299)

(MS-296)

S-105 DETAIL



E	1	WIRE ① WAS WH/BLUE	7-3-61	5173	G-DL	RU	SPM
D	1	DWG. Changed to as was before C Revision. Except for Items 16 thru 19. C NICKEL HARDWARE WAS CHANGED	4-28-61	4648	RU	JOBS	SPM
C	5	Item (3) was SR12/5 7-2211 65	3/28/61	4498	RU	JOBS	SPM
	5	Item (14) was SR12/5 7-2211 65					
	4	Item (18) was SR12/5 7-2211 33					
	3	Item (1) was SR12/5 7-2211 96					
	2	Item (2) was SR12/5 7-2211 44					
1	Item (2) was JJ-121-2						
B	1	ITEM I WAS MS-296 ITEM II WAS MS-299 STAMPING DWGS. ADDED	1/10/58	2	16		ART
A	1	REVISED AS TO THE SPEC. S-250	6-24-53	1	15	WDA	WDE

ISSUE	ITEM	CHANGED FROM	DATE	CN. NO.	DRAFTS	CHECKER	ENG. APP.
TOLERANCES		SCALE:					
ALL OTHERS	DEC. DIM. ± FRAC. DIM. ± ANGULAR DIM. ±	DRILL, PUNCH, COMMERCIAL STOCK SIZES AND MANUFACTURERS TOLERANCES ARE NOT INCLUDED.					

1	40 X -1/2		A-626	11-23-53
REQ. PER UNIT	MODEL	PROJECT NO.	ASS'Y. NO.	DATE
USED ON				

REQ.	ITEM	PART NO.	DESCRIPTION	SYMBOL
THE TECHNICAL MATERIEL CORP. MAMARONECK, NEW YORK				
STOCK SIZE		XTAL - SWITCH ASSY		
MATERIAL		VOX		
TYPE & TEMPER		CDD. 11-23-53		
HEAT TREAT. SPEC.		DRAWN: WDE ELEC. DES. APP.: ART MECH. DES. APP.:		
FINISH & SPEC. NO.		CHECKED: WDE FINAL APPROVAL: ART		
A-594 E				