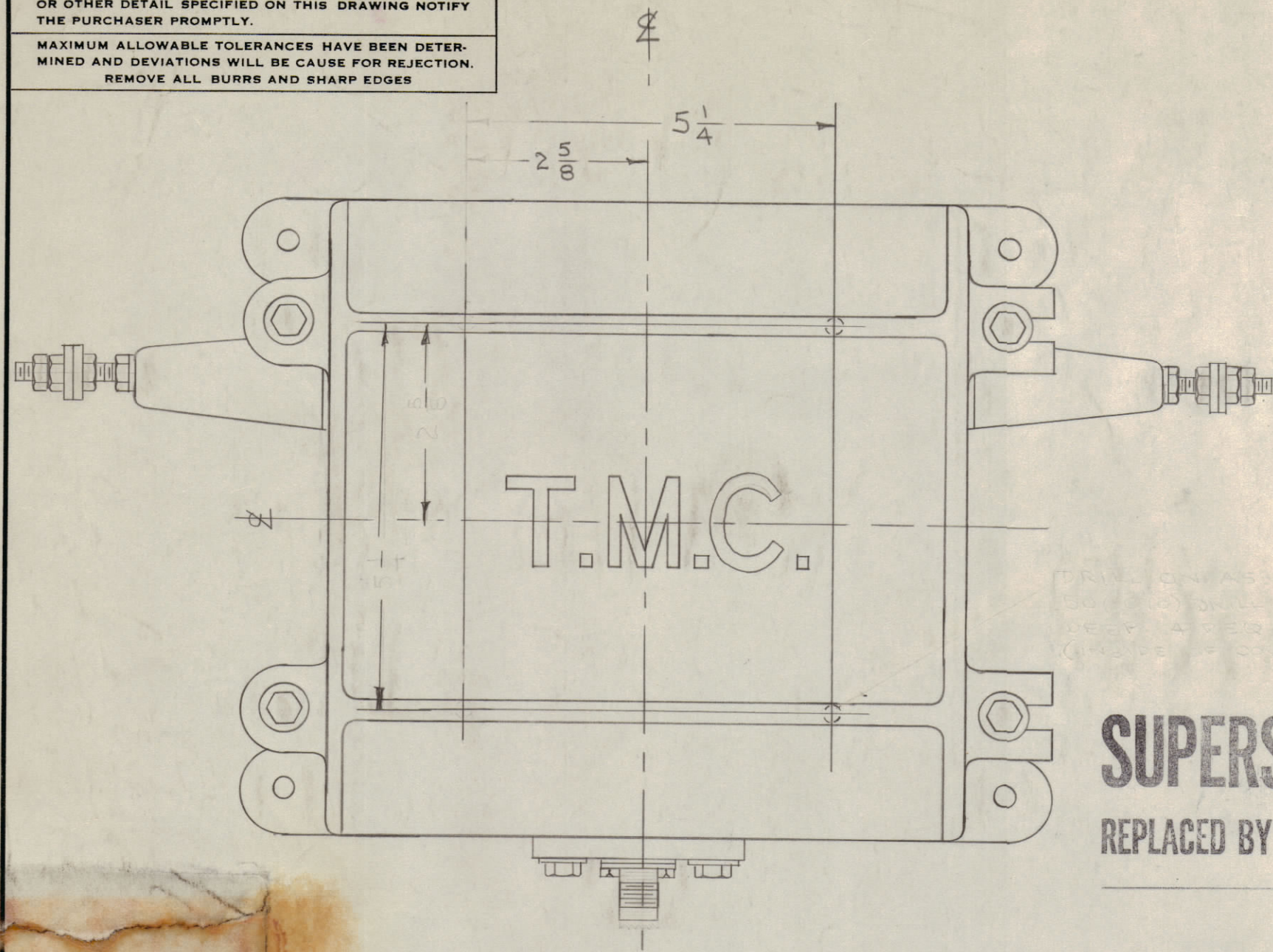
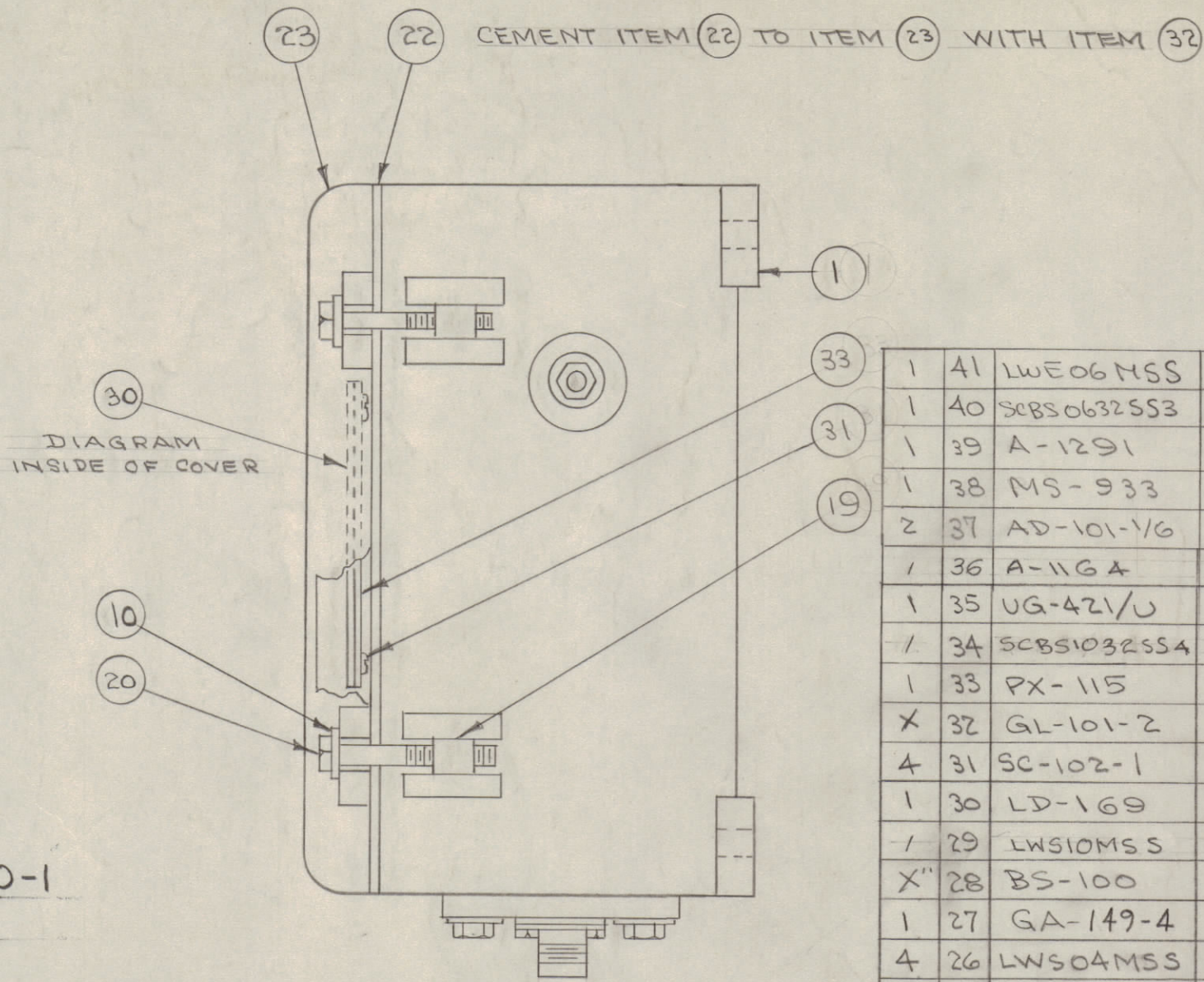


IF IT IS FOUND DESIRABLE TO CHANGE ANY TOLERANCE OR OTHER DETAIL SPECIFIED ON THIS DRAWING NOTIFY THE PURCHASER PROMPTLY.

MAXIMUM ALLOWABLE TOLERANCES HAVE BEEN DETERMINED AND DEVIATIONS WILL BE CAUSE FOR REJECTION. REMOVE ALL BURRS AND SHARP EDGES

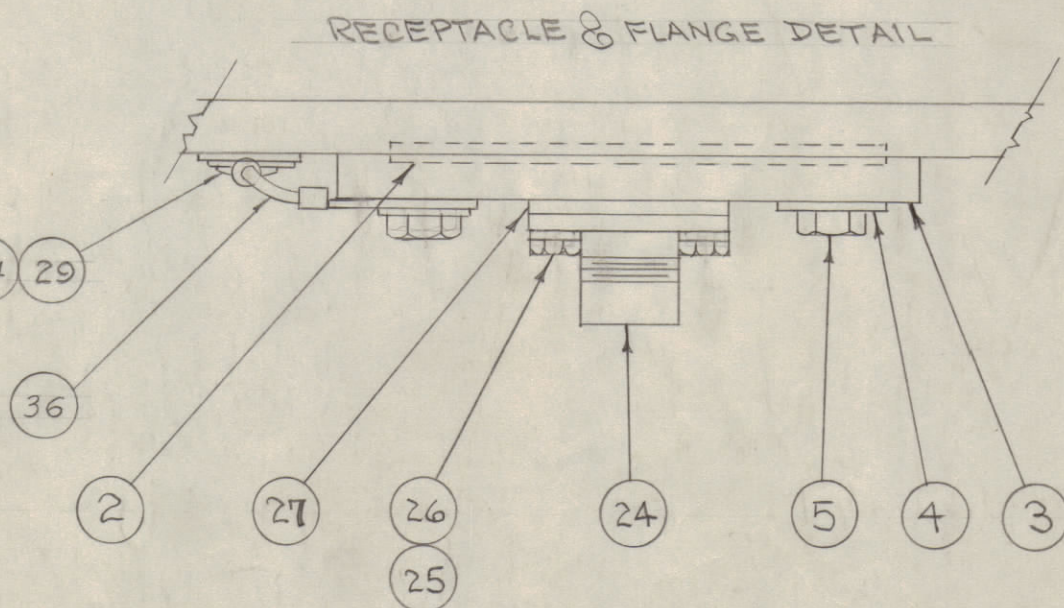
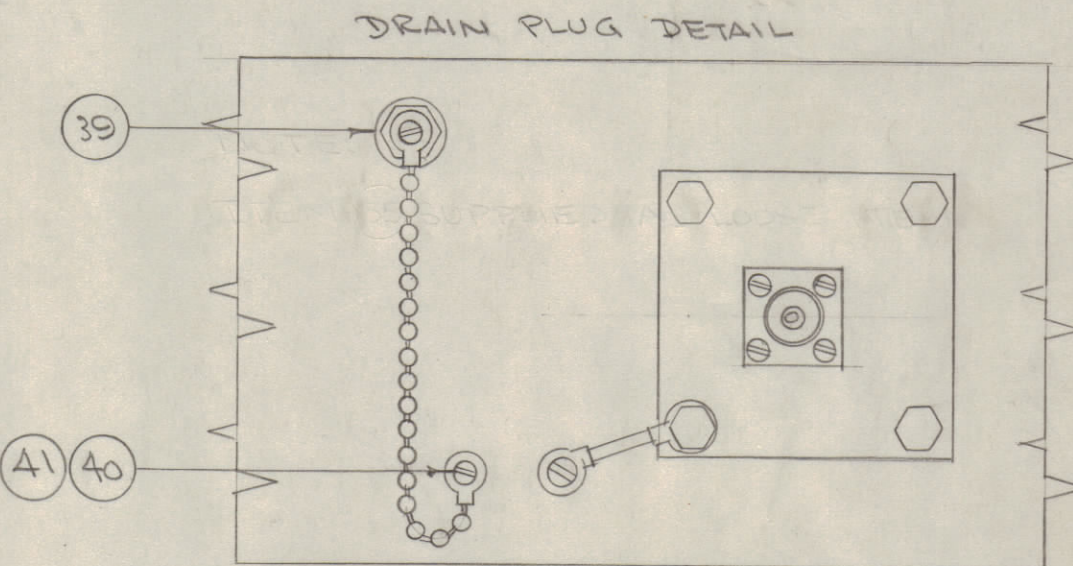
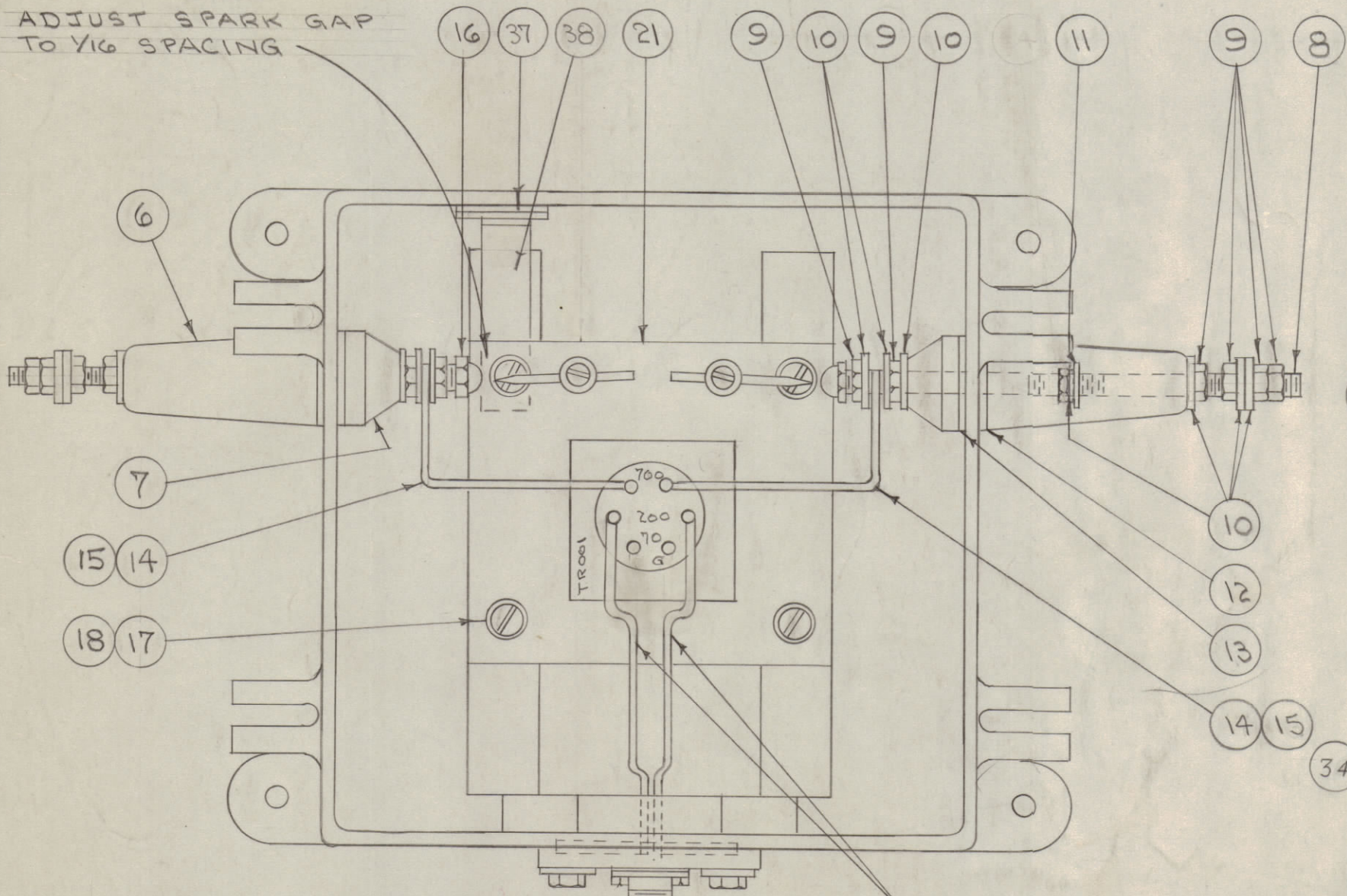


SUPERSEDED
REPLACED BY A-3080-1



NOTE: ITEM 35 SUPPLIED AS LOOSE ITEM, INSIDE CASE.

1	41	LWE06MSS	WASHER, LOCK
1	40	SCBS06325S3	SCREW, MACHINE
1	39	A-1291	DRAIN PLUG ASSY.
1	38	MS-933	HOLDER, DESSICANT
2	37	AD-101-1/6	DESSICANT
1	36	A-1164	GROUND STRAP, CASE
1	35	UG-421/U	CONNECTOR, TWIN
1	34	SCBS10325S4	SCREW, MACHINE
1	33	PX-115	GUARD
X	32	GL-101-2	CEMENT, PHOBOND
4	31	SC-102-1	SCREW, THD. CUTTING
1	30	LD-169	SCHEMATIC
1	29	LWS10MSS	LOCKWASHER
X	28	BS-100	SOLDER, SOFT (ALL CONNECTIONS)
1	27	GA-149-4	GASKET
4	26	LWS04MSS	WASHER, LOCK
4	25	SCBS04405S5	SCREW, MACHINE
1	24	UG-422/U	CONNECTOR, TWIN
1	23	PM-105	COVER
1	22	GA-103	GASKET, COVER



A-592 D

1	21	A-593	TRANSFORMER, SUB ASSY.
4	20	SC-108-9	BOLT, HEX.
4	19	PM-100	PIN, COVER BOLT
4	18	LWE08MRC	WASHER, LOCK
4	17	SCBS08323C6	SCREW, MACHINE
2	16	NTC2520BCL	NUT, CAP
20	15	PX-104-1-.066	INSULATION, SLEEVING
24	14	WL-100-4	WIRE, BUSS BAR
2	13	GA-101	GASKET
2	12	GA-100	"
2	11	GA-104	"
2	10	FW25MSS	WASHER, FLAT
12	9	NTH2520SS14	NUT, HEX
2	8	A-100	STUD, SUB ASSY.
2	7	NS-101	INSULATOR, INSIDE
2	6	NS-100	" , OUTSIDE
4	5	SC-108-4	BOLT, HEX.
4	4	LWS25MSS	WASHER, LOCK
1	3	PM-119	FLANGE
1	2	GA-102	GASKET
1	1	PM-106	CASE

D	1	"SUPERSEDED" NOTE ADD.	6.9.64	11509	15B	@	MM
C		ITEM 25 WAS SCBS0440BNS	8-17-62	7076	G.S.	FILE	L6
		ITEM 27 WAS GA-111, 26 WAS LWS04 MRC					
		ITEM 34 WAS SCBS10325S4, 29 WAS LWS10 MRC					
		ITEM 41 WAS LWE06 MRC, 40 WAS SCBS06325S3					
B	1	ITEMS 37 THRU 41 ADDED	9/13/66	2	ADD	FILE	AMB
	2	ITEM 36 ADDED					
A		ITEMS 29 & 34	1-23-56	1	MB	ADD	AMB
	1	WERE DELETED					
ISSUE	ITEM	CHANGED FROM	DATE	CN. NO.	DRAFTS	CHECKER	ENG. APP.
TOLERANCES		SCALE: #					
ALL OTHERS	DEC. DIM. ± FRAC. DIM. ± ANGULAR DIM. ±	DRILL, PUNCH, COMMERCIAL STOCK SIZES AND MANUFACTURERS TOLERANCES ARE NOT INCLUDED.					

REQ. PER UNIT	RAC-8	257		11-23-53
	MODEL	PROJECT NO.	ASSY. NO.	DATE
USED ON				

REQ. ITEM	PART NO.	DESCRIPTION	SYMBOL
THE TECHNICAL MATERIEL CORP. MAMARONECK, NEW YORK			
STOCK SIZE			
CASE & COVER ASSY.			
MATERIAL WEIGHT PER PC.			
RAC-8			
TYPE & TEMPER			
CDD: 11-23-53			
DRAWN			
ELEC. DES. APP. MECH. DES. APP.			
HEAT TREAT. SPEC.			
CHECKED			
FINAL APPROVAL			
A-592 D			
FINISH & SPEC. NO.			