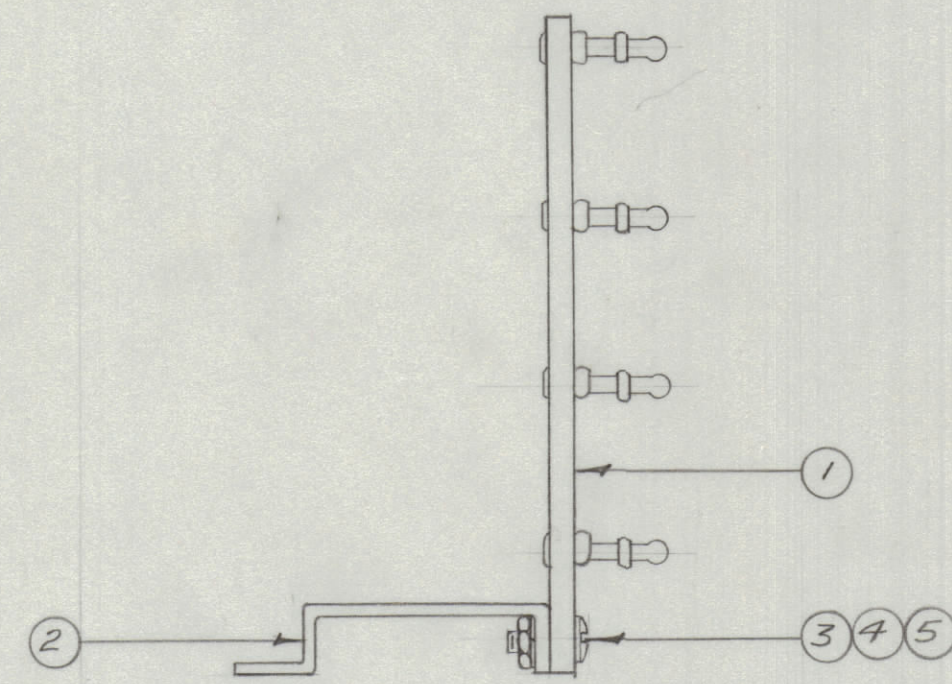
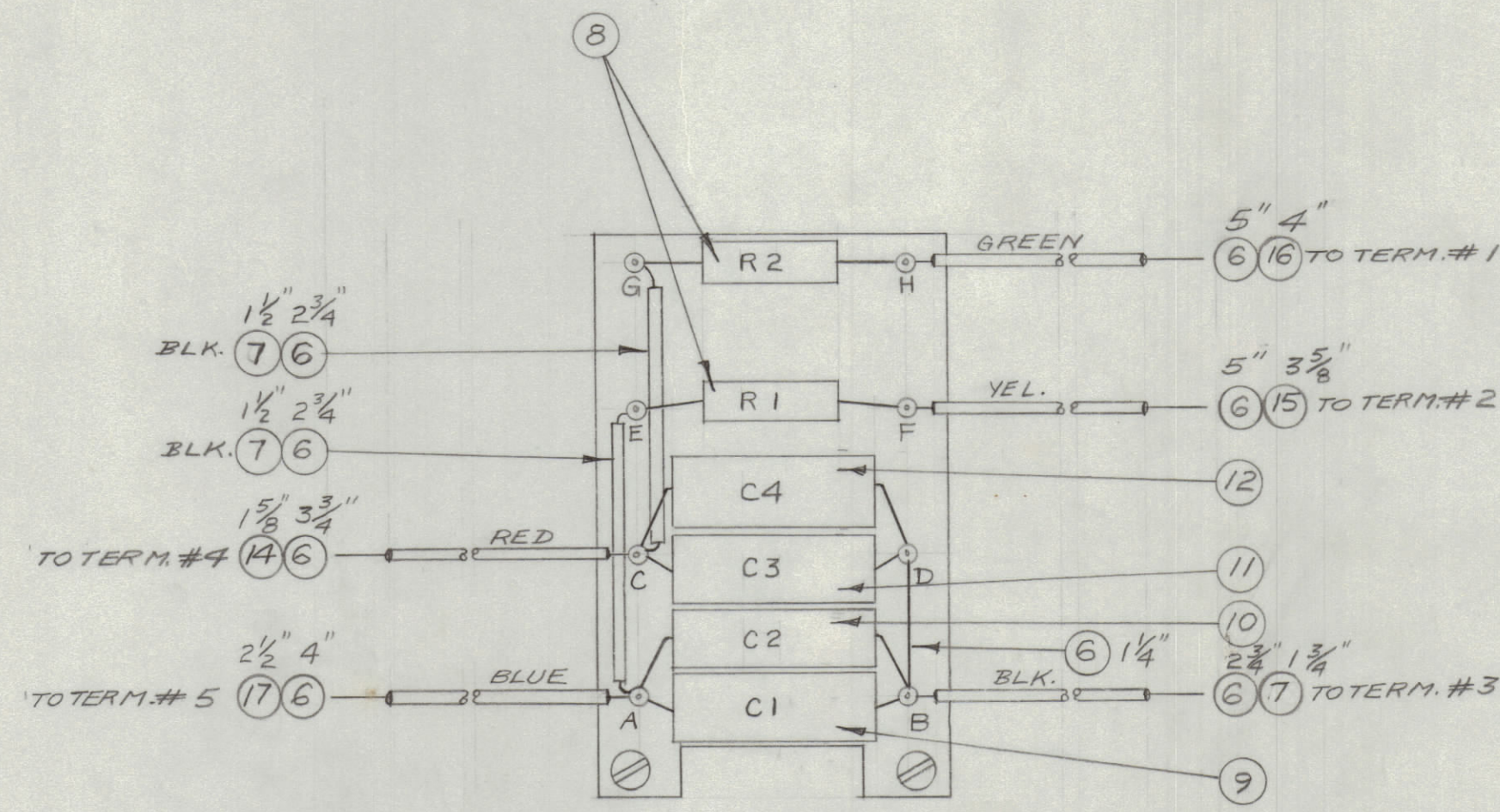


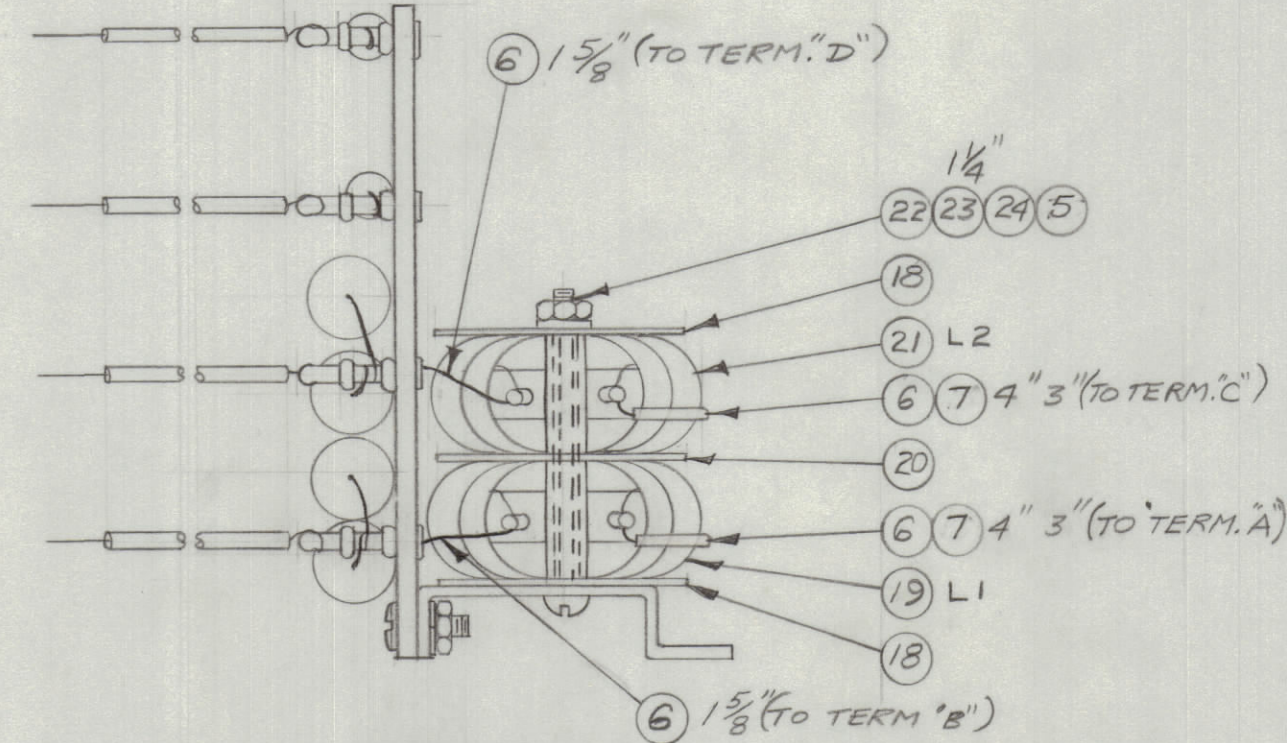
IF IT IS FOUND DESIRABLE TO CHANGE ANY TOLERANCE OR OTHER DETAIL SPECIFIED ON THIS DRAWING NOTIFY THE PURCHASER PROMPTLY.
 MAXIMUM ALLOWABLE TOLERANCES HAVE BEEN DETERMINED AND DEVIATIONS WILL BE CAUSE FOR REJECTION. REMOVE ALL BURRS AND SHARP EDGES



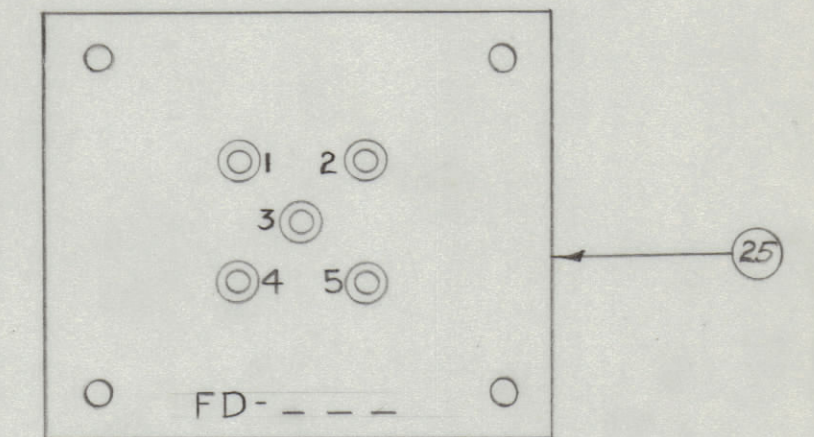
STEP 1
 A. SECURE BRACKET TO TERMINAL BOARD.



STEP 2
 A. CONNECT COMPONENTS & LEADS TO TERM. BOARD.



STEP 3
 A. SECURE TOROIDAL COILS TO BRACKET (AS SHOWN).
 B. CONNECT COIL LEADS TO TERMINALS A, B, C, D. (AS SHOWN).
 C. SOLDER ALL CONTACTS.



STEP 4
 A. STAMP BOTTOM COVER WITH FD-... USE 1/8\"/>

VALUE CHART

TMC. NO.	ITEM # 9	ITEM # 10	ITEM # 11	ITEM # 12	ITEM # 13	ITEM # 21
	C1	C2	C3	C4	L1	L2
FD-102	CN-103-39		CN-103-38		CL-106-7	CL-106-7
FD-103	CN-103-37		CN-103-36		CL-106-7	CL-106-7
FD-105	CN-103-35		CM35C103G	CM35C152G	CL-106-7	CL-106-7
FD-106	CM35C103G	CM35C682G	CM35C103G	CM35C392G	CL-106-7	CL-106-7
FD-108	CM35C103G	CM20C681J	CM35C822G		CL-106-7	CL-106-7
FD-109	CM35C822G	CM20C681G	CM35C682G		CL-106-7	CL-106-7
FD-111	CM35C103G	CM30C222G	CM35C103G		CL-106-39	CL-106-39
FD-112	CM35C103G		CM35C822G		CL-106-39	CL-106-39
FD-114	CM35C682G	CM20C102G	CM30C562G	CM20C102G	CL-106-39	CL-106-39
FD-115	CM35C682G		CM30C562G		CL-106-39	CL-106-39

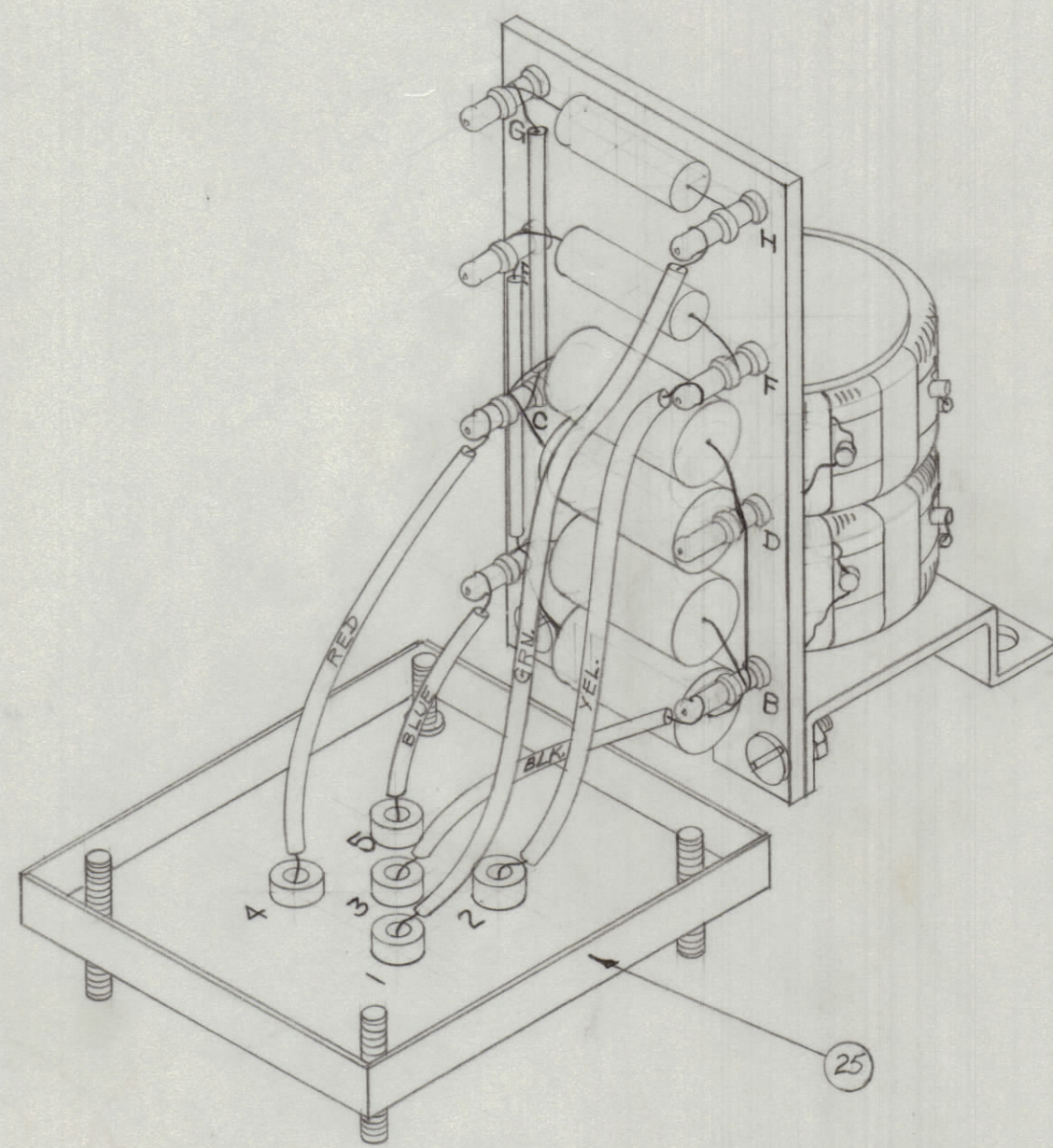
COMMON PARTS

ITEM	DESCRIPTION	QTY
1 28	1M-129 INSULATION, TOP	
X 27	GL-100 COMPOUND, POTTING	
X 26	85-100 SOLDER, SOFT	
1 25	BX-111 CASE ASS'Y.	
1 24	FW06MRC WASHER, FLAT	
1/4 23	PX-104-1-.133 INSULATION, SLEEVING (SIZE B) BLACK	
1 22	SCRS06328C22 SCREW, MACH.	
X 21	(SEE VALUE CHART ABOVE) L2	
1 20	WA-110-2 WASHER, PAPER	
X 19	(SEE VALUE CHART ABOVE) L1	
2 18	WA-110-1 WASHER, PAPER	
2 17	PX-104-6-.022 INSULATION, SLEEVING (BLUE)	
4 16	PX-104-4-.022 INSULATION, SLEEVING (GR)	
3 15	PX-104-2-.022 INSULATION, SLEEVING (YEL)	
1 14	PX-104-3-.022 INSULATION, SLEEVING (RED)	
1 13	1M-128 INSULATION, SIDES	
X 12	(SEE VALUE CHART ABOVE) C4	
X 11	(SEE VALUE CHART ABOVE) C3	
X 10	(SEE VALUE CHART ABOVE) C2	
X 9	(SEE VALUE CHART ABOVE) C1	
2 8	RC306F823K RESISTOR, FIXED, COMP. R1 R2	
11 7	PX-104-1-.022 INSULATION, SLEEVING (SIZE 2B) BLK.	
39 6	WL-100-8 WIRE, BUSS 24 GA.	
5 5	NTH06328C8 NUT, HEX.	
4 4	LWS06MRC LOCKWASHER, SPLIT	
2 3	SCBS06328C6 SCREW, MACH.	
1 2	MS-231 BRACKET, FILTER	
1 1	A-568 TERMINAL BOARD	

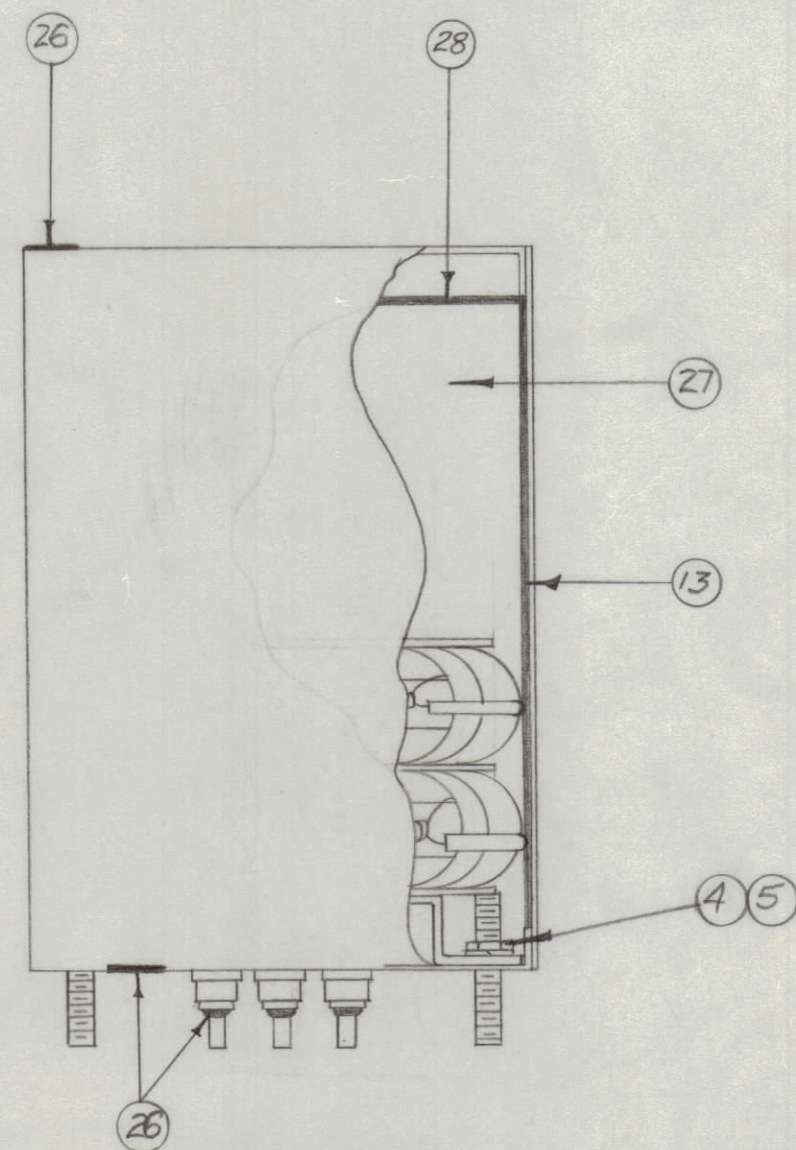
NOTICE TO PERSONS RECEIVING THIS DRAWING

THE TECHNICAL MATERIEL CORPORATION claims proprietary right in the material disclosed hereon. This drawing is issued in confidence for engineering information only and may not be reproduced or used to manufacture anything shown hereon without permission from THE TECHNICAL MATERIEL CORPORATION to the user. This drawing is loaned for mutual assistance and is subject to recall at any time.

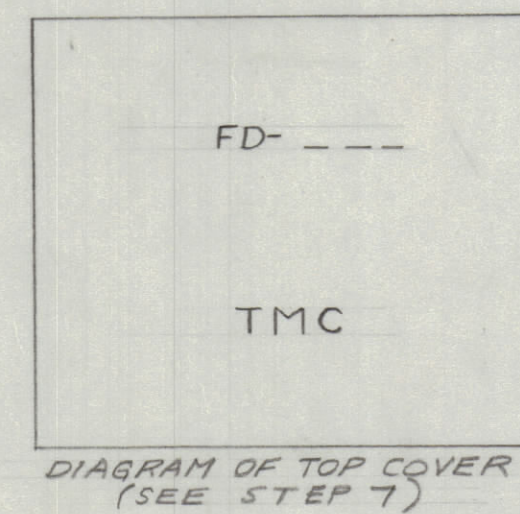
Property of:
 THE TECHNICAL MATERIEL CORPORATION
 MAMARONECK, NEW YORK



STEP 5
 A. CONNECT & SOLDER WIRES AS SHOWN (SEE STEP 2).
 B. SEAL WITH SOLDER ALL EXTERNAL LUGS ON BOTTOM OF CAN.

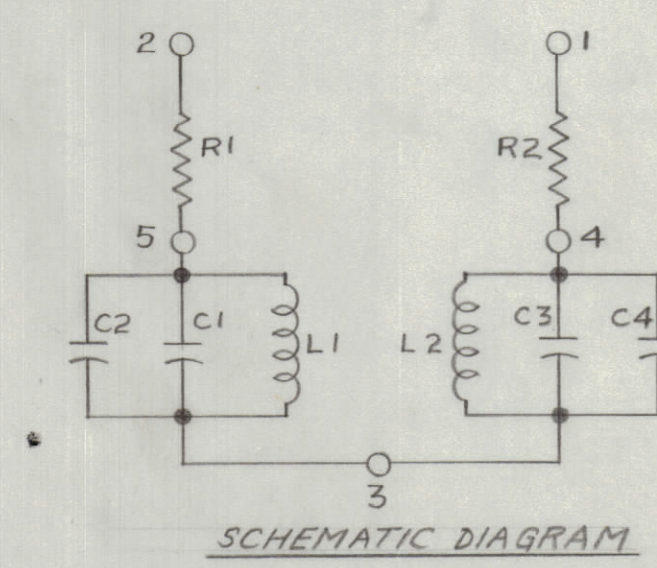


STEP 6
 A. SECURE BRACKET TO BOTTOM COVER.
 B. INSERT BRACKET ASS'Y. & CAN BOTTOM INTO CAN.
 C. TEST AS PRESCRIBED IN TMC SPEC. NO. S-181. PROCEED ONLY IF TEST IS PASSED.
 D. SOLDER ALL AROUND BOTTOM EDGE.
 E. LINE INNER SIDES OF CAN WITH ITEM #13.
 F. POUR COMPOUND (ITEM 27) APPROX. 1/8\"/>



STEP 7
 A. MARK TOP COVER WITH 1/8\"/>

STEP 8
 A. PAINT CAN WITH S-115, (SMOOTH GREY ENAMEL) WITH THE EXCEPTION OF BOTTOM COVER.



SCHEMATIC DIAGRAM

ISSUE	ITEM	CHANGED FROM	DATE	CN. NO.	DRAFTS	CHECKER	ENG. APP.

TOLERANCES:
 ALL DEC. DIM. ±
 OTHERS FRAC. DIM. ±
 ANGULAR DIM. ±

DRILL, PUNCH, COMMERCIAL STOCK SIZES AND MANUFACTURERS TOLERANCES ARE NOT INCLUDED.

MODEL	PROJECT NO.	ASSY. NO.	DATE
	170		10-16-53

REQ. ITEM	PART NO.	DESCRIPTION	SYMBOL
		THE TECHNICAL MATERIEL CORP. MAMARONECK, NEW YORK	
		FILTER, DISCRIMINATOR ASSY. "B" SERIES	
		TYPE & TEMPER. K 10-16-53	A.J.J. M.H.S.
		DRAWN M.H.S.	ELEC. DES. APP. MECH. DES. APP.
		HEAT TREAT. SPEC. M.H.S.	CHECKED A.J.J. FINAL APPROVAL
		FINISH & SPEC. NO.	A-570