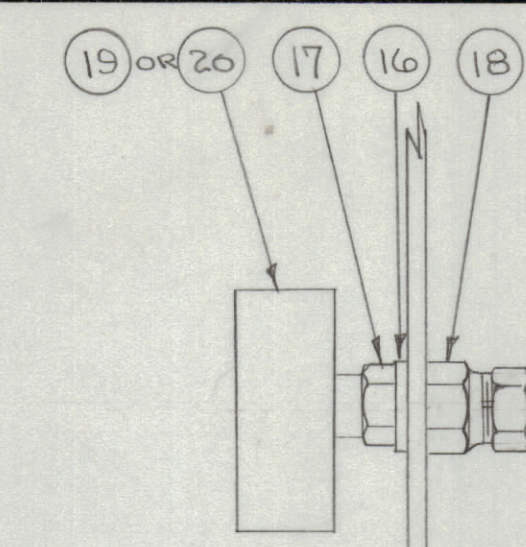
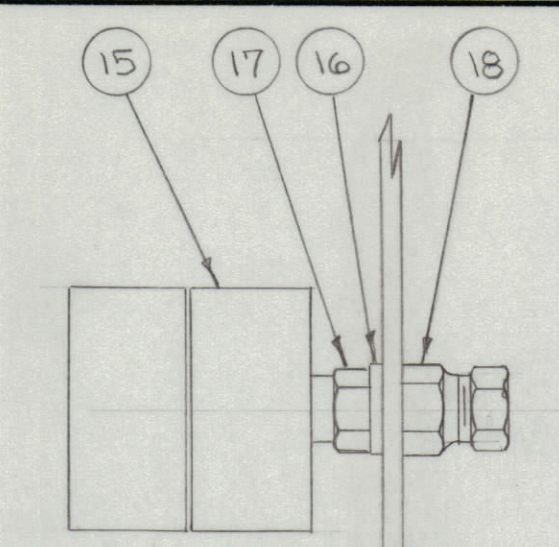


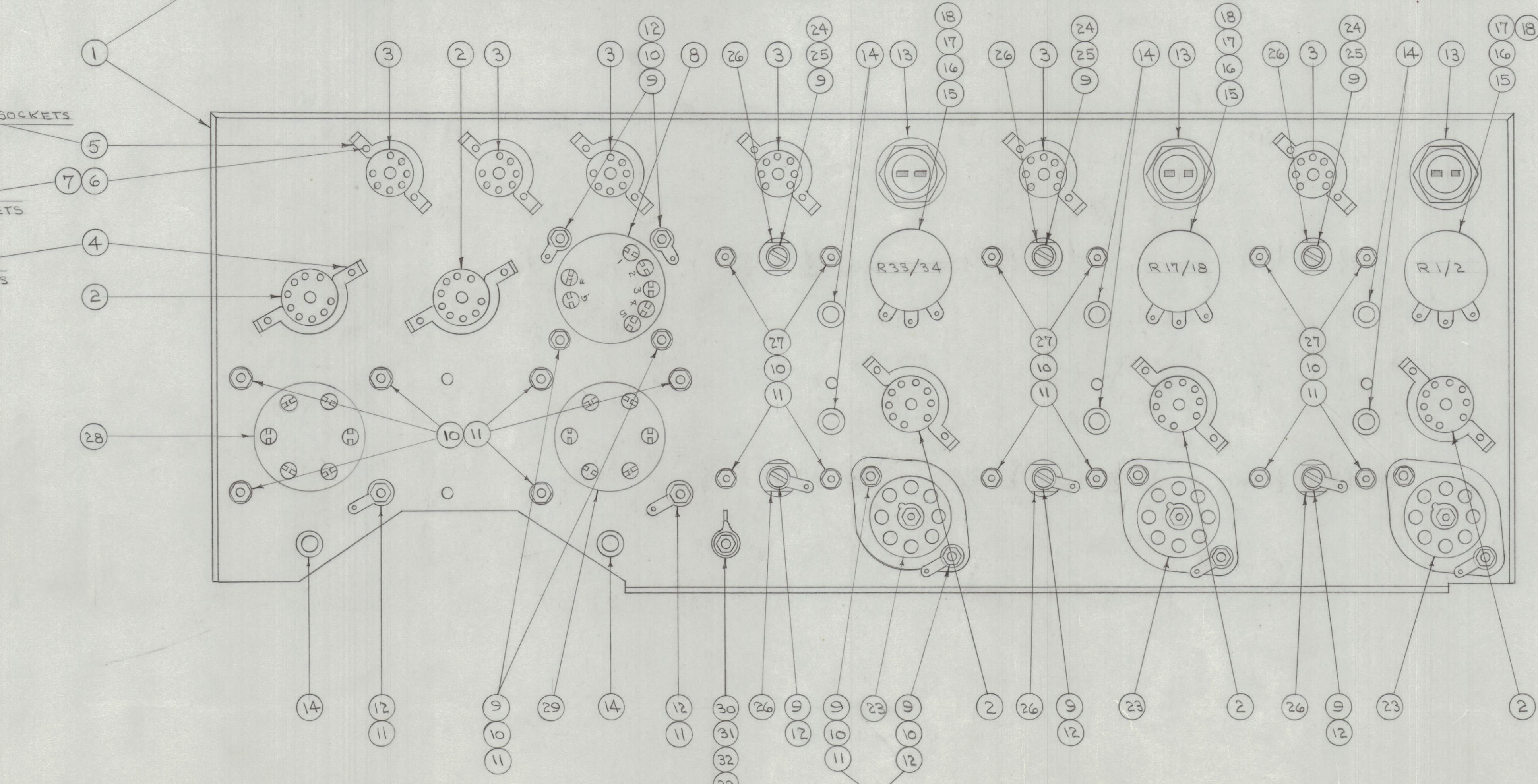
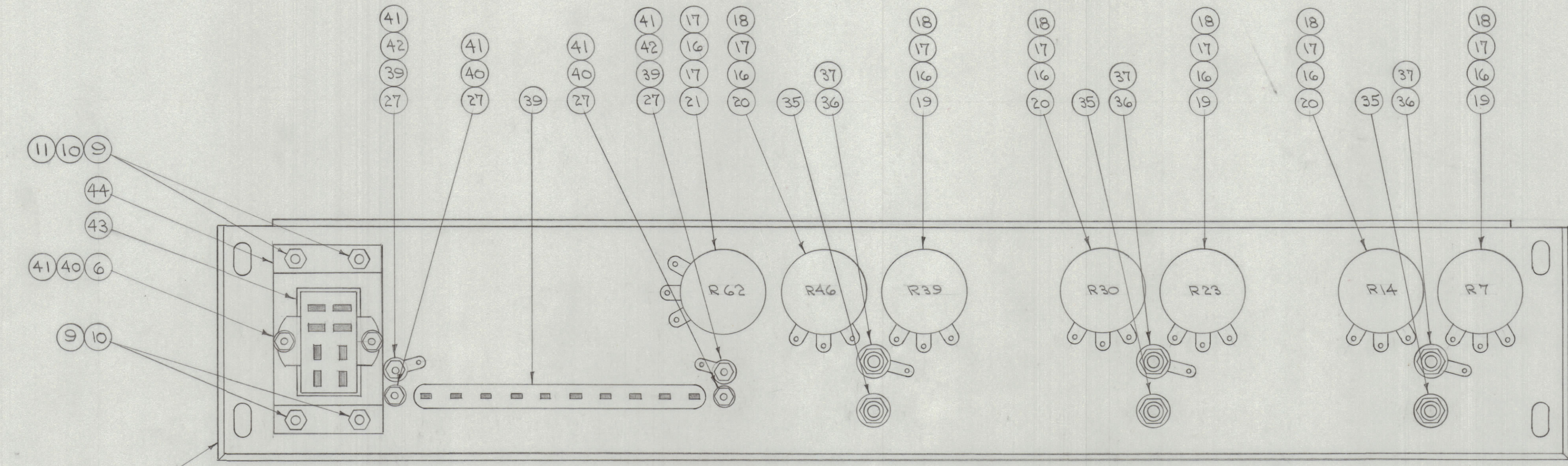
IF IT IS FOUND DESIRABLE TO CHANGE ANY TOLERANCE OR OTHER DETAIL SPECIFIED ON THIS DRAWING NOTIFY THE PURCHASER PROMPTLY.
 MAXIMUM ALLOWABLE TOLERANCES HAVE BEEN DETERMINED AND DEVIATIONS WILL BE CAUSE FOR REJECTION. REMOVE ALL BURRS AND SHARP EDGES.



ASSEMBLY DETAIL FOR ITEMS 19 & 20



ASSEMBLY DETAIL FOR ITEM 15



ALL 7 PIN SOCKETS
 ALL 7 & 9 PIN SOCKETS
 ALL 9 PIN SOCKETS

ALL OCTAL SOCKETS

| | | | | |
|---|----|-------------|-------------------|--------|
| 1 | 44 | A-549 | BRACKET ASSY. | |
| 1 | 43 | JJ-127-1 | JACK | 38 |
| 2 | 42 | TE-104-1 | TERMINAL, LOCKING | |
| 6 | 41 | NTH0408CB | NUT, HEX | |
| 4 | 40 | LW104MRC | WASHER, LOCK | |
| 2 | 39 | MS-154 | STRADDLE PLATE | |
| 1 | 38 | TM-100-10 | TERMINAL STRIP | |
| 3 | 37 | TE-132 | LUG, TERMINAL | |
| 3 | 36 | JJ-114-3 | JACK (BLACK) | 41, 42 |
| 3 | 35 | JJ-114-2 | JACK (RED) | 41, 42 |
| 1 | 34 | NTH0832BC10 | NUT, HEX | |
| 1 | 33 | LW108MRC | WASHER, LOCK | |

| | | | | |
|----|----|--------------|----------------------|-------------------------|
| 2 | 32 | WA-101-4 | WASHER, FIBRE | |
| 2 | 31 | FW 08 MRC | WASHER, FLAT | |
| 1 | 30 | SC8S0832BC24 | SCREW, MACHINE | |
| 1 | 29 | NF-101 | TONE SELECTOR | Z4 |
| 1 | 28 | TF-134 | TRANSFORMER, AUDIO | T2 |
| 16 | 27 | SC8S0632BC6 | SCREW, MACHINE | |
| 6 | 26 | PX-178 | CONDENSER MOUNT | |
| 6 | 25 | LW106MRC | WASHER, LOCK | |
| 3 | 24 | CB-114 | CAPACITOR, DUAL VAR. | EVA, C. 1/2/18 |
| 3 | 23 | TS-121 | SOCKET, OCTAL | |
| 1 | 22 | RW-107-8 | RESISTOR, FIXED | R61 |
| 1 | 21 | RA-101-19 | RESISTOR, VAR. | R62 |
| 3 | 20 | RV4ATS105B | RESISTOR, VAR. | R14, 20, 46, 27, 23, 39 |
| 3 | 19 | RV4ATS202A | RESISTOR, VAR. | |
| 9 | 18 | PO-104 | LOCK, SHAFT | |
| 11 | 17 | NTH3732BN16 | NUT, HEX | |
| 10 | 16 | LW137LSC | WASHER, LOCK | |
| 3 | 15 | RY-101 | RESISTOR, VAR. | RY, 15, 24 |
| 8 | 14 | EY-102-2 | GROMMET, ELASTIC | |
| 3 | 13 | TS-108-2 | SOCKET, BAYONET | |
| 10 | 12 | TE-104-2 | TERMINAL, LOCKING | |
| 32 | 11 | NTH0632BC10 | NUT, HEX. | |
| 25 | 10 | LW106MRC | WASHER, LOCK | |
| 20 | 9 | SC8S0632BC4 | SCREW, MACHINE | |
| 1 | 8 | TF-112 | TRANSFORMER, AUDIO | T1 |
| 22 | 7 | LW504MRC | WASHER, LOCK | |
| 24 | 6 | SC8S0408BC4 | SCREW, MACHINE | |
| 6 | 5 | NT-101-4 | NUT, STRAP | |
| 5 | 4 | NT-101-5 | NUT, STRAP | |
| 6 | 3 | TS-102-PO1 | SOCKET, MIN. 7 PIN | |
| 5 | 2 | TS-103-PO1 | SOCKET, MIN. 9 PIN | |
| 1 | 1 | A-524 | MAIN CHASSIS ASSY. | |

NOTICE TO PERSONS RECEIVING THIS DRAWING

THE TECHNICAL MATERIEL CORPORATION claims proprietary right in the material disclosed hereon. This drawing is issued in confidence for engineering information only and may not be reproduced or used to manufacture anything shown hereon without permission from THE TECHNICAL MATERIEL CORPORATION to the user. This drawing is loaned for mutual assistance and is subject to recall at any time.

Property of:
 THE TECHNICAL MATERIEL CORPORATION
 MAMARONECK, NEW YORK

| | | | | | |
|------------------|-------------|--------------|----------------|--------------------------------|--|
| ORIGINAL RELEASE | 7/19/68 | CW | | | |
| ISSUE | ITEM | CHANGED FROM | DATE | CN. NO. | DRAFTS |
| TOLERANCES | | | | | |
| SCALE: | | | | | |
| ALL OTHERS | DEC. DIM. ± | FRAC. DIM. ± | ANGULAR DIM. ± | DRILL, PUNCH, COMMERCIAL STOCK | SIZES AND MANUFACTURERS TOLERANCES ARE NOT INCLUDED. |

| | | | |
|---------|-------------|-----------|---------|
| RSC-1 | 170 | | 10-9-53 |
| MODEL | PROJECT NO. | ASSY. NO. | DATE |
| USED ON | | | |

| | | | |
|--------------------|----------------|---|-----------------|
| REQ. ITEM | PART NO. | DESCRIPTION | SYMBOL |
| # | # | THE TECHNICAL MATERIEL CORP. MAMARONECK, NEW YORK | |
| STOCK SIZE | # | HDWE. ASSY. MAIN CHASSIS | |
| MATERIAL | WEIGHT PER PC. | RSC-1 | |
| TYPE & TEMPER | DATE | ELEC. DES. APP. | MECH. DES. APP. |
| HEAT TREAT. SPEC. | CHECKED | FINAL APPROVAL | |
| FINISH & SPEC. NO. | | A-563 | |

A-563