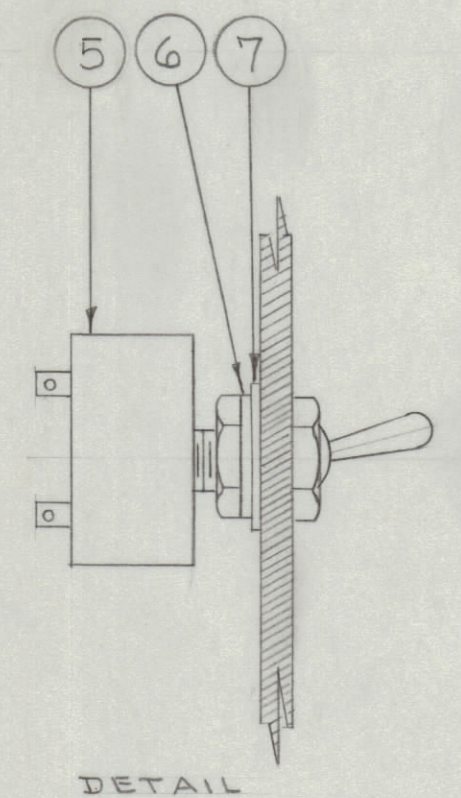
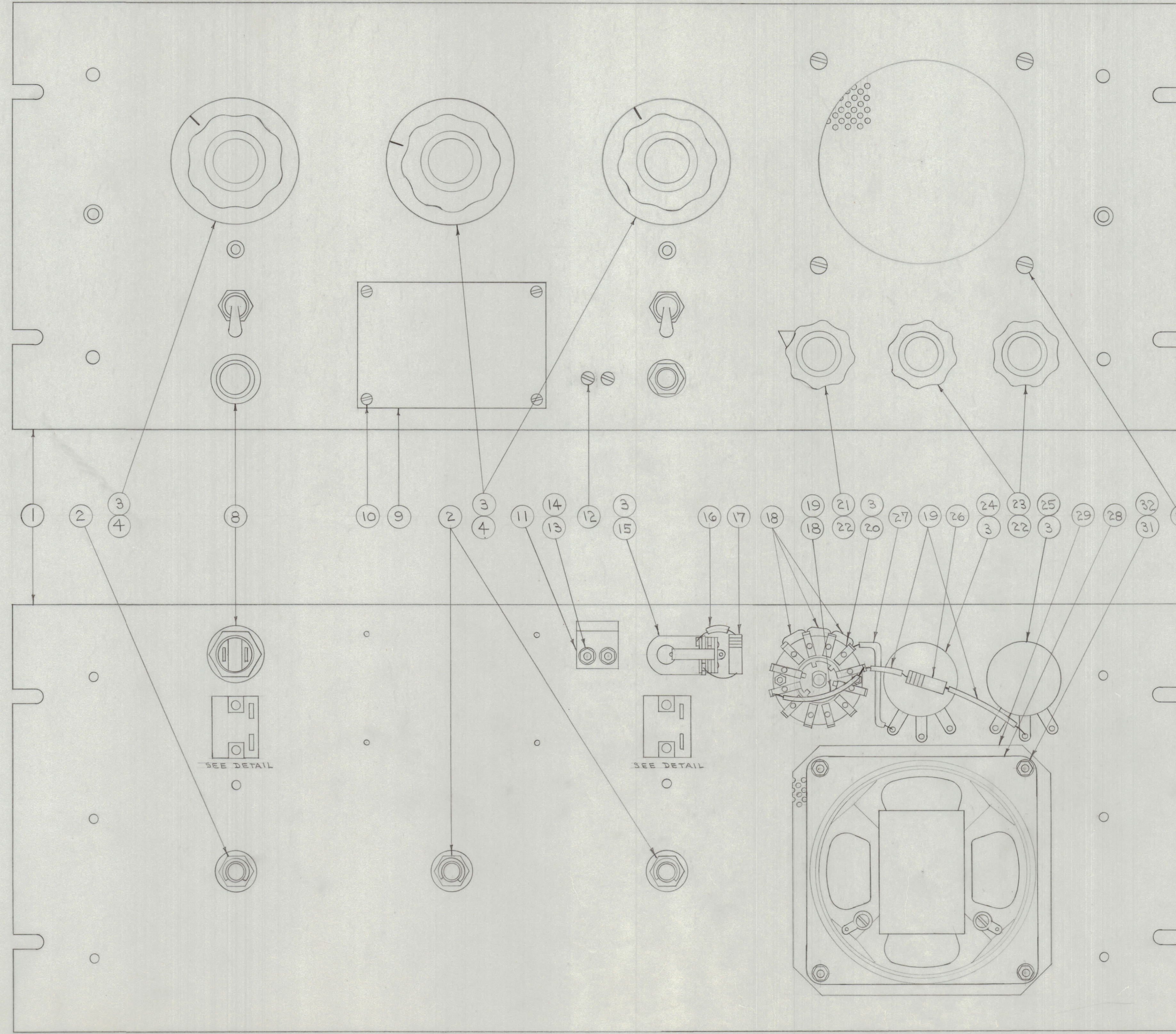


IF IT IS FOUND DESIRABLE TO CHANGE ANY TOLERANCE OR OTHER DETAIL SPECIFIED ON THIS DRAWING NOTIFY THE PURCHASER PROMPTLY.
 MAXIMUM ALLOWABLE TOLERANCES HAVE BEEN DETERMINED AND DEVIATIONS WILL BE CAUSE FOR REJECTION. REMOVE ALL BURRS AND SHARP EDGES



X 33	BS-100	SOLDER, SOFT (ALL CONNECTIONS)	
4 32	NTH0632BC6	NUT, HEX	
4 31	LWI06MRC	LOCKWASHER	
4 30	SCFS0632BC8	SCREW, MACHINE	
1 29	MS-395	GRILL	
1 28	LS-101	SPEAKER	
X 27	SR1R3/8(M)22U55	SCREW, MACHINE (GRN)	
1 26	RC20GF105K	RESISTOR, FIXED	R64
1 25	RV44TRD104A	RESISTOR, VAR.	R52
1 24	RV44TRD502A	"	R53
2 23	MP-100-1	KNOB	
3 22	NTH3732BC6	NUT, HEX	
1 21	MP-100-4	KNOB	
1 20	SW-107	SWITCH, ROTARY	
X 19	PX-104-4-022	INSULATION, SLEEVING (GRN)	
X 18	WL-100-8	WIRE, BUSS BAR 24GA.	
1 17	RC42GF181K	RESISTOR, FIXED	R63
X 16	PX-104-1-022	INSULATION, SLEEVING (BLK)	
1 15	JT-128	JACK	
2 14	NTH0440BC6	NUT, HEX	
2 13	LWS04MRC	LOCKWASHER	
2 12	SCFS0440BC6	SCREW, MACHINE	
1 11	FS-101	BRACKET, ANGLE	
4 10	SC-110-1	SCREW, THD. CUTTING	
1 9	NP-130-2	NAME PLATE	
1 8	TS-106-1	SOCKET, W/LENS	
2 7	WA-100	RING, LOCKING	
2 6	LWI50LRC	LOCKWASHER	
2 5	ST-12-A	SWITCH, TOGGLE	
3 4	MP-101-10	KNOB	
7 3	LWI37LRC	LOCKWASHER	
3 2	PM-250	BEARING, PANEL	
1 1	MS-390	FRONT PANEL	

NOTICE TO PERSONS RECEIVING THIS DRAWING
 THE TECHNICAL MATERIEL CORPORATION claims proprietary right in the material disclosed hereon. This drawing is issued in confidence for engineering information only and may not be reproduced or used to manufacture anything shown herein without permission from THE TECHNICAL MATERIEL CORPORATION to the user. This drawing is loaned for mutual assistance and is subject to recall at any time.
 Property of:
 THE TECHNICAL MATERIEL CORPORATION
 MAMARONECK, NEW YORK

ORIGINAL RELEASE TO: 7/10/69	DATE: 7/10/69	CN. NO.:	DRAFTS CHECKER:	ENG. APP.:
ISSUE:	CHANGED FROM:	DATE:	CN. NO.:	DRAFTS CHECKER:
TOLERANCES:		SCALE:		
ALL OTHERS:	DEC. DIM. ± FRAC. DIM. ± ANGULAR DIM. ±	DRILL, PUNCH, COMMERCIAL STOCK SIZES AND MANUFACTURERS TOLERANCES ARE NOT INCLUDED.		

RSC-1	170	10-7-53
MODEL:	PROJECT NO.:	DATE:
	ASSY. NO.:	
USED ON		

REQ. ITEM	PART NO.	DESCRIPTION	SYMBOL
#	#	THE TECHNICAL MATERIEL CORP. MAMARONECK, NEW YORK	
#	#	STOCK SIZE	
#	#	FRONT PANEL ASSY.	
MATERIAL	WEIGHT PER PC.	RSC-1	
#	#	TYPE & TEMPER	
#	#	DRAWN	ELEC. DES. APP. MECH. DES. APP.
#	#	HEAT TREAT. SPEC.	CHECKED
#	#	FINISH & SPEC. NO.	FINAL APPROVAL

A-560