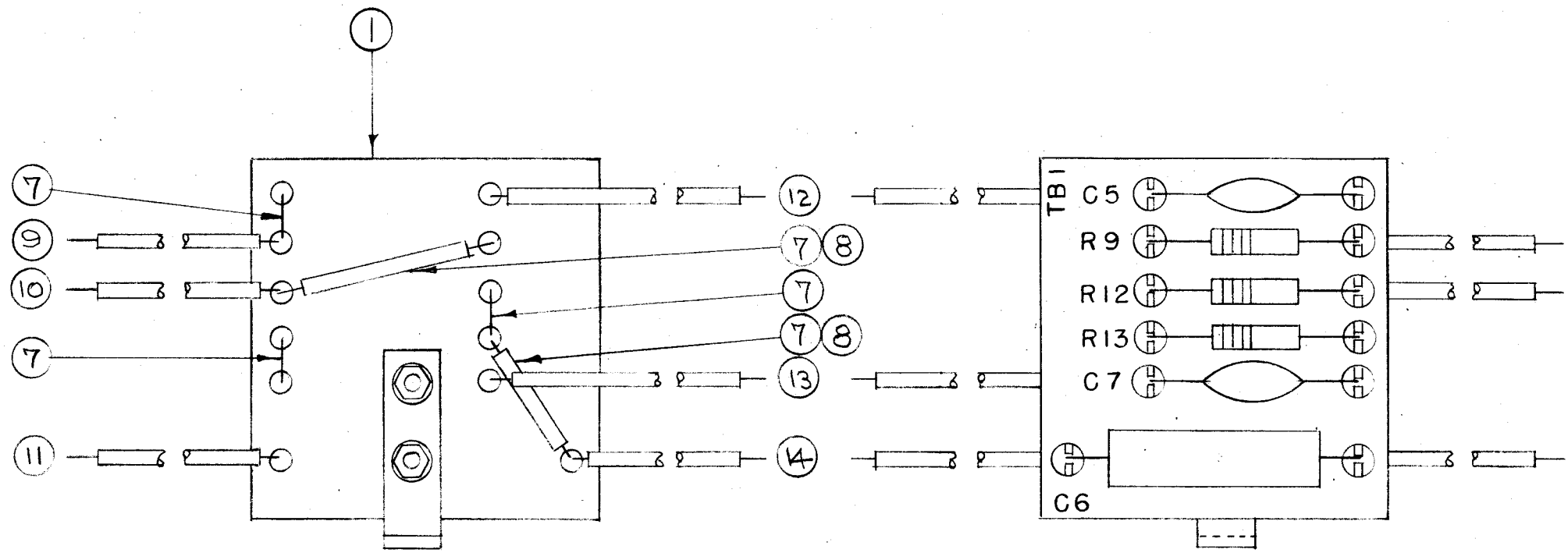


IF IT IS FOUND DESIRABLE TO CHANGE ANY TOLERANCE OR OTHER DETAIL SPECIFIED ON THIS DRAWING NOTIFY THE PURCHASER PROMPTLY.

MAXIMUM ALLOWABLE TOLERANCES HAVE BEEN DETERMINED AND DEVIATIONS WILL BE CAUSE FOR REJECTION. REMOVE ALL BURRS AND SHARP EDGES

A-554



WIRE LENGTHS FOR SRIR ARE TOTAL LENGTHS AND INCLUDE 3/4" EACH END FOR STRIPPING.

|        |    |                  |                             |          |
|--------|----|------------------|-----------------------------|----------|
| X      | 15 | BS-100           | SOLDER, SOFT                |          |
| 4"     | 14 | SRIR 3/5(7)22U96 | CABLE, INSULATED (WH/BLUE)  |          |
| 6 1/4" | 13 | SRIR 3/5(7)22U95 | " , " (WH/GREEN)            |          |
| 5 1/2" | 12 | SRIR 3/5(7)22U55 | " , " (GREEN)               |          |
| 3 3/4" | 11 | SRIR 3/5(7)22U66 | " , " (BLUE)                |          |
| 5"     | 10 | SRIR 3/5(7)22U22 | " , " (RED)                 |          |
| 5"     | 9  | SRIR 3/5(7)22U77 | " , " (VIOLET)              |          |
| X      | 8  | PX-100-1-022     | INSULATION, SLEEVING (BLK.) |          |
| X      | 7  | WL-100-8         | WIRE, BUSS BAR 24 GA.       |          |
| 1      | 6  | RC20GF105K       | RESISTOR, FIXED             | R13      |
| 1      | 5  | RC20GF103J       | RESISTOR, FIXED             | R12      |
| 1      | 4  | RC20GF683J       | RESISTOR, FIXED             | R9       |
| 1      | 3  | CN-105           | CAPACITOR, FIXED            | C6       |
| 2      | 2  | CC-100-16        | CAPACITOR, FIXED            | C7<br>C5 |
| 1      | 1  | A-553            | TERMINAL BOARD ASSY.        |          |

| REQ. | ITEM | PART NO. | DESCRIPTION                         | SYMBOL                          |
|------|------|----------|-------------------------------------|---------------------------------|
|      |      |          | <b>THE TECHNICAL MATERIEL CORP.</b> |                                 |
|      |      |          | MAMARONECK. NEW YORK                |                                 |
|      |      |          | COMPONENT ASSEMBLY                  |                                 |
|      |      |          | TERM. BD. NO-1                      | RSC-1                           |
|      |      |          | C.D.D. 10-1-53                      | G.T.O. <i>WDe</i>               |
|      |      |          | DRAWN                               | ELEC. DES. APP. MECH. DES. APP. |
|      |      |          | <i>WDe RB</i>                       | G.T.O. <i>WDe</i>               |
|      |      |          | CHECKED                             | FINAL APPROVAL                  |
|      |      |          | A-554                               |                                 |
|      |      |          | FINISH & SPEC. NO.                  |                                 |

| ISSUE      | ITEM | CHANGED FROM  | DATE | CN. NO.   | DRAFTS | CHECKER | ENG. APP. |
|------------|------|---|------|---|--------|---------|-----------|
| TOLERANCES |      |   |      |   |        |         |           |
|            |      | SCALE: $\frac{1}{16}$ "                                   |      |   |        |         |           |
| ALL OTHERS |      | DEC. DIM. $\pm$<br>FRAC. DIM. $\pm$<br>ANGULAR DIM. $\pm$ |      | DRILL, PUNCH, COMMERCIAL STOCK<br>SIZES AND MANUFACTURERS<br>TOLERANCES ARE NOT INCLUDED. |        |         |           |

|         |             |            |         |
|---------|-------------|------------|---------|
| RSC-1   | 170         |            | 10-1-53 |
| MODEL   | PROJECT NO. | ASS'Y. NO. | DATE    |
| USED ON |             |            |         |