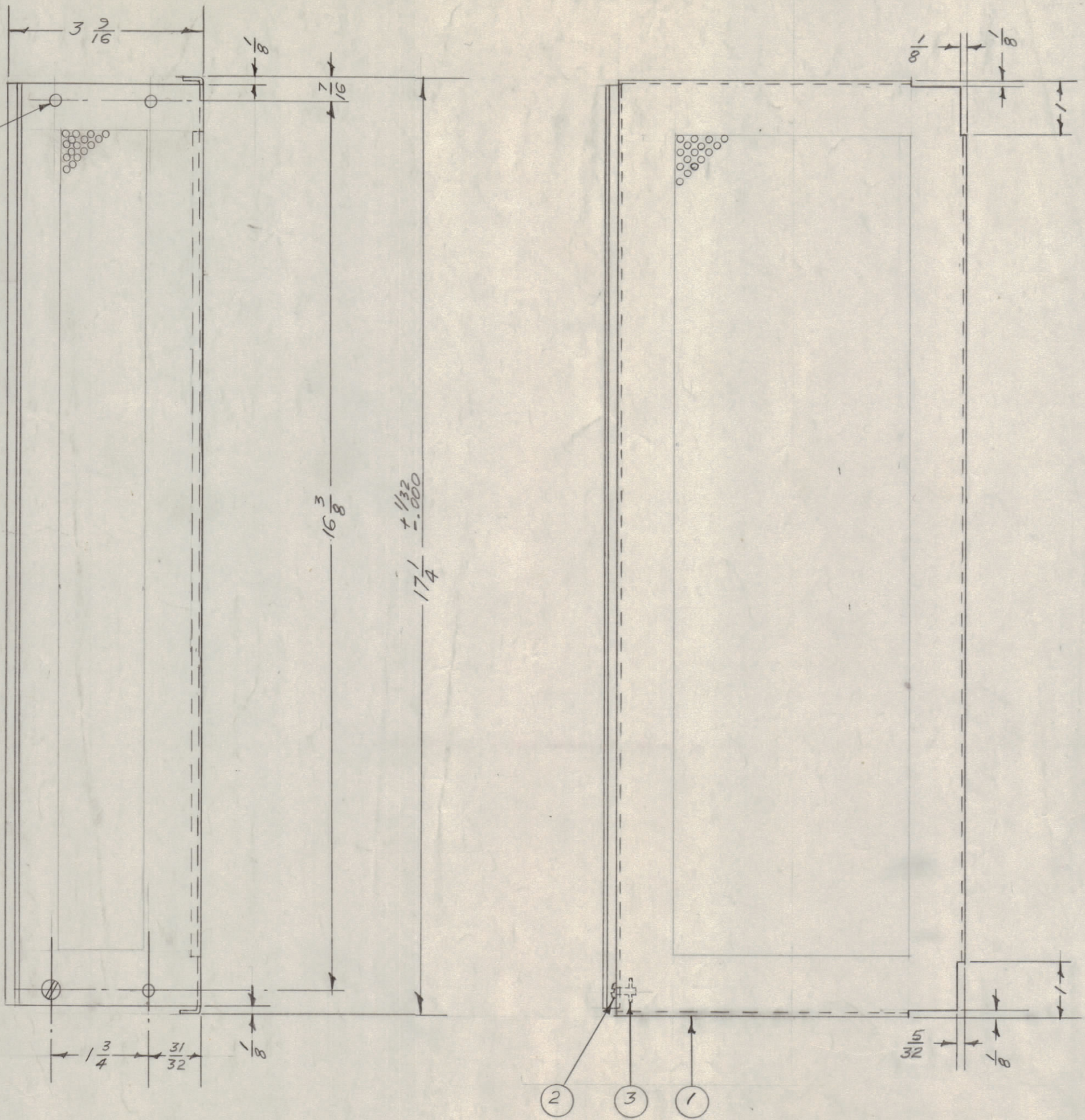


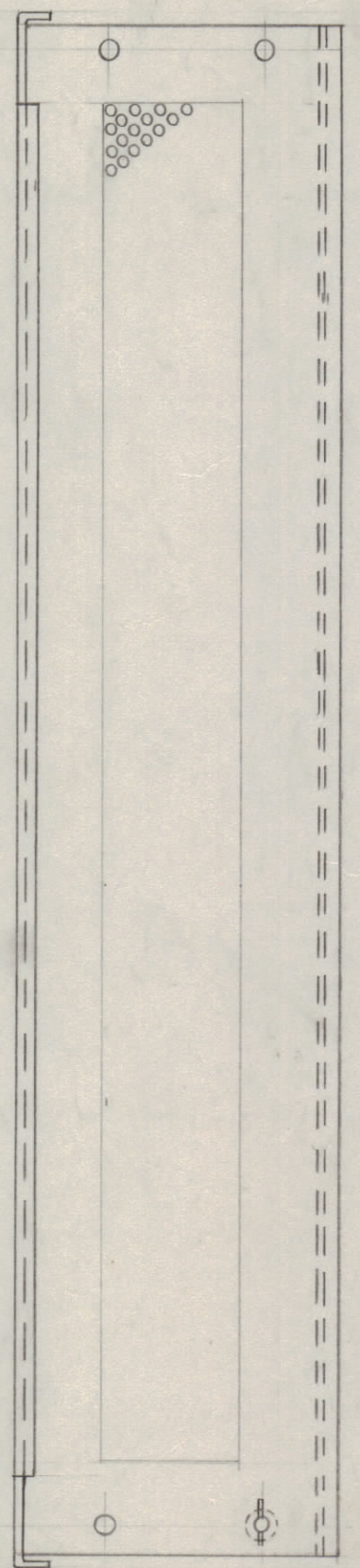
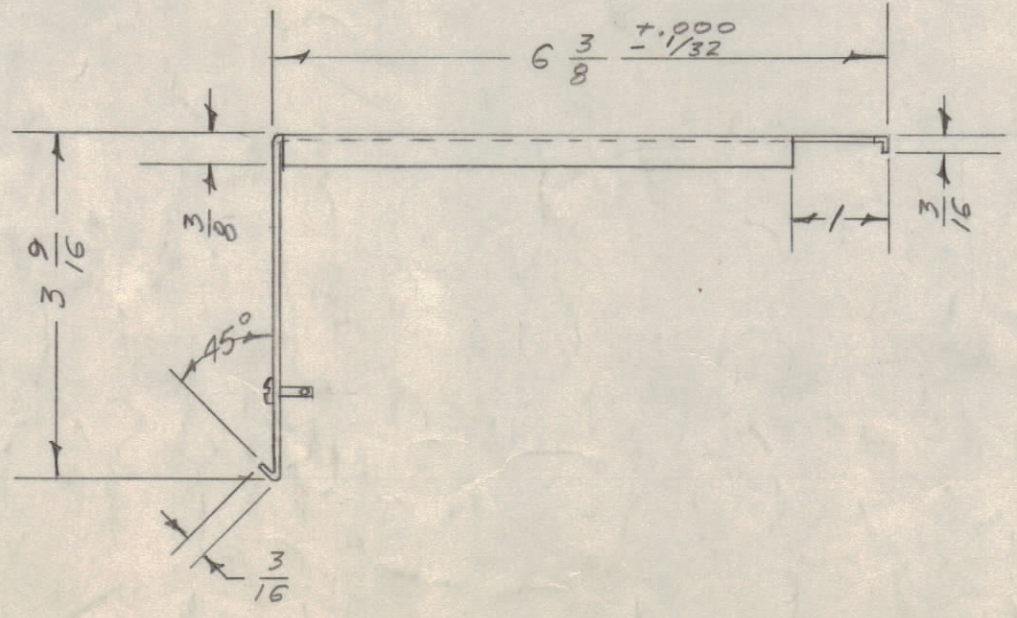
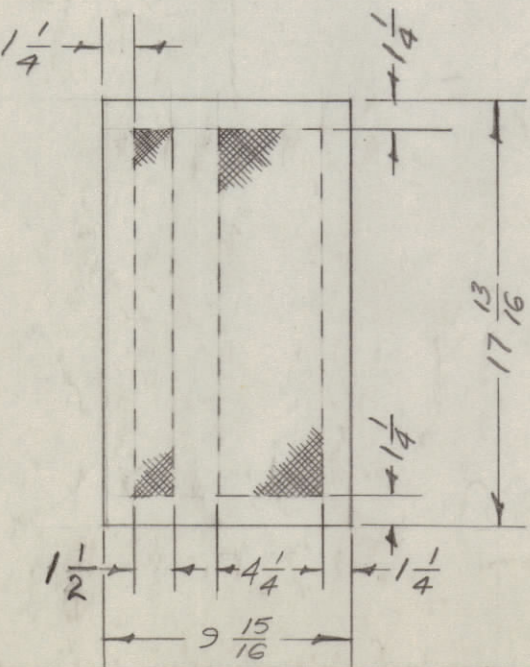
IF IT IS FOUND DESIRABLE TO CHANGE ANY TOLERANCE OR OTHER DETAIL SPECIFIED ON THIS DRAWING NOTIFY THE PURCHASER PROMPTLY.

MAXIMUM ALLOWABLE TOLERANCES HAVE BEEN DETERMINED AND DEVIATIONS WILL BE CAUSE FOR REJECTION. REMOVE ALL BURRS AND SHARP EDGES

$\frac{7}{32}$ (.218) D.
4 HOLES REQ'D.



BLANK SIZE



NOTE: PERFORATED ALUMINUM.
.072 DIA. HOLES ON $\frac{1}{8}$ CENTERS.
SEE BLANK LAYOUT FOR BORDERS.

NOTICE TO PERSONS RECEIVING THIS DRAWING

THE TECHNICAL MATERIEL CORPORATION claims proprietary right in the material disclosed hereon. This drawing is issued in confidence for engineering information only and may not be reproduced or used to manufacture anything shown hereon without permission from THE TECHNICAL MATERIEL CORPORATION to the user. This drawing is loaned for mutual assistance and is subject to recall at any time.

Property of:
THE TECHNICAL MATERIEL CORPORATION
MAMARONECK, NEW YORK

A-546 B

ISSUE	ITEM	CHANGED FROM	DATE	CN. NO.	DRAFTS	CHECKER	ENG. APP.
B	1	5409 WAS 5101	11-29-53	1001	EP		EMN
A	1	5/32 WAS 1/8	11/11/53	1	16	HLD	

TOLERANCES SCALE: HALF SIZE

ALL OTHERS DEC. DIM. \pm 1/64
FRAC. DIM. \pm 1/64
ANGULAR DIM. \pm

DRILL, PUNCH, COMMERCIAL STOCK SIZES AND MANUFACTURERS TOLERANCES ARE NOT INCLUDED.

1	RSC-1 (A,B,G,D,E)	170	9-28-53
QTY PER UNIT	MODEL	PROJECT NO.	ASS'Y. NO.
			DATE

USED ON

4	3	PN-105	CROSS PIN	
4	2	FS-105-5	STUD	
1	1	MS-400	COVER, TOP (NO DW'G.)	
REQ. ITEM	PART NO.		DESCRIPTION	SYMBOL
.051				
ALUMINUM				
52S-H32				
SEE NOTE				
HEAT TREAT. SPEC.				
FINISH & SPEC. NO.				

THE TECHNICAL MATERIEL CORP.			
MAMARONECK, NEW YORK			
COVER, TOP ASS'Y.			
DRAWN		ELEC. DES. APP.	
CHECKED		FINAL APPROVAL	
A-546		B	