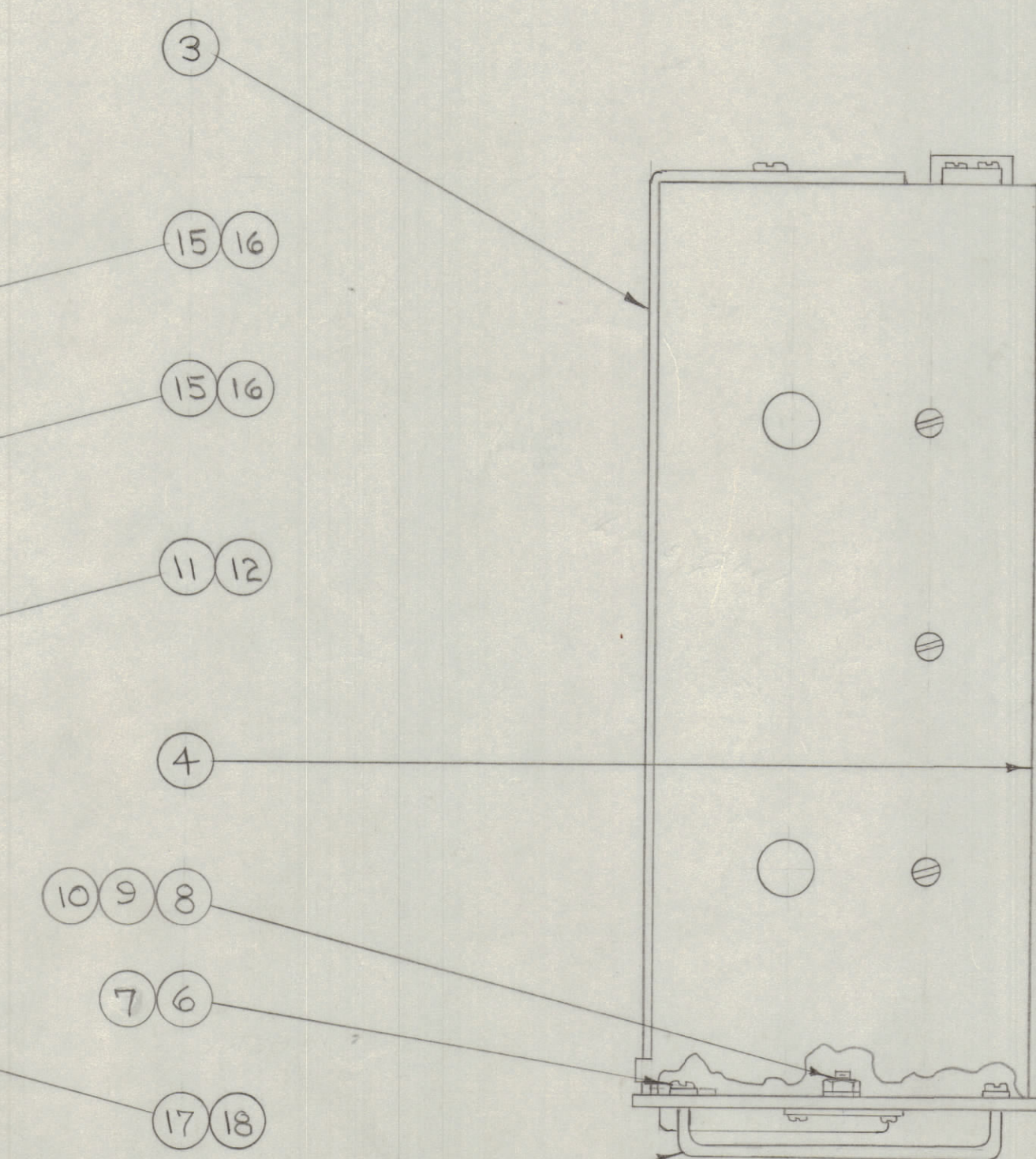
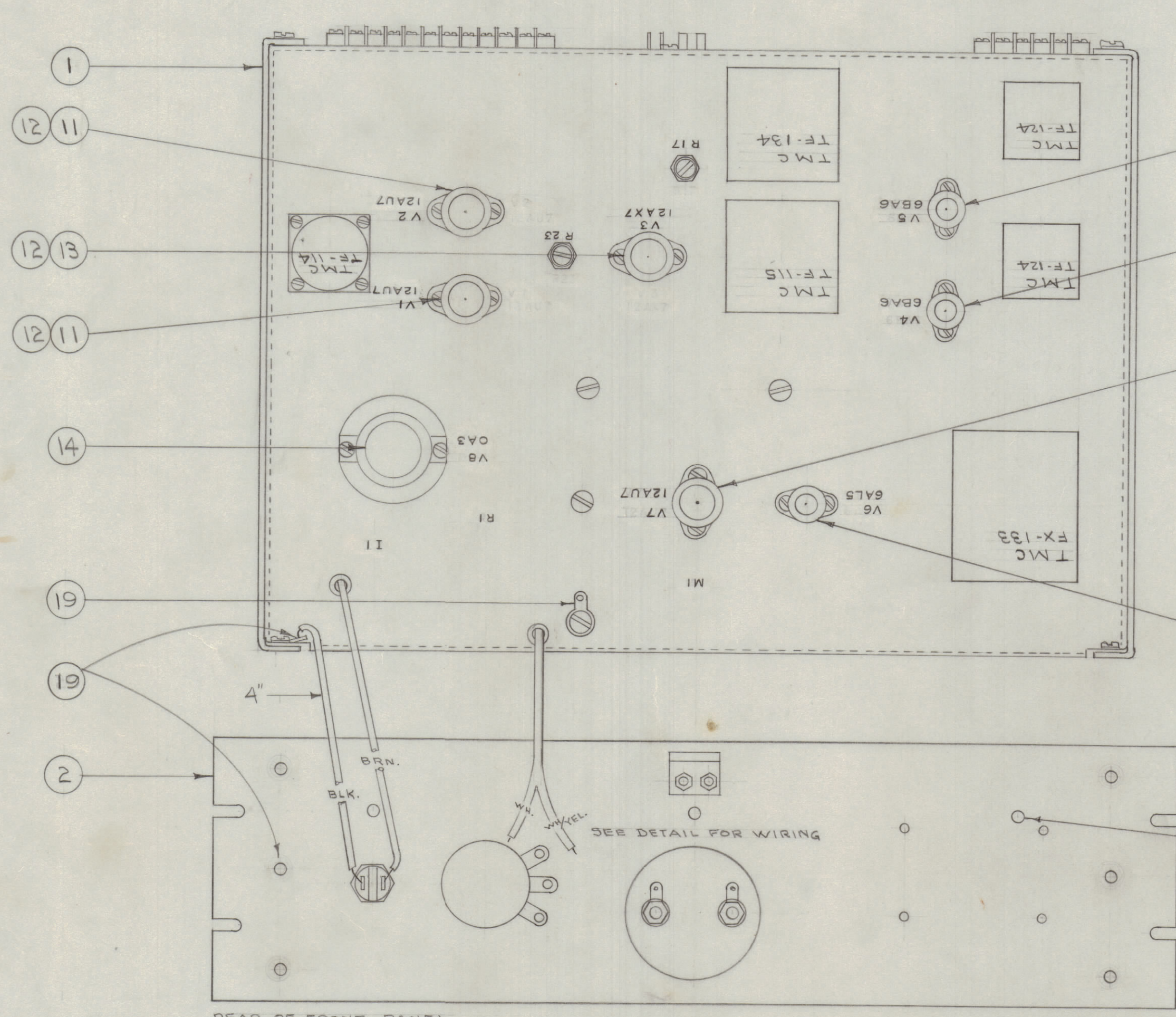
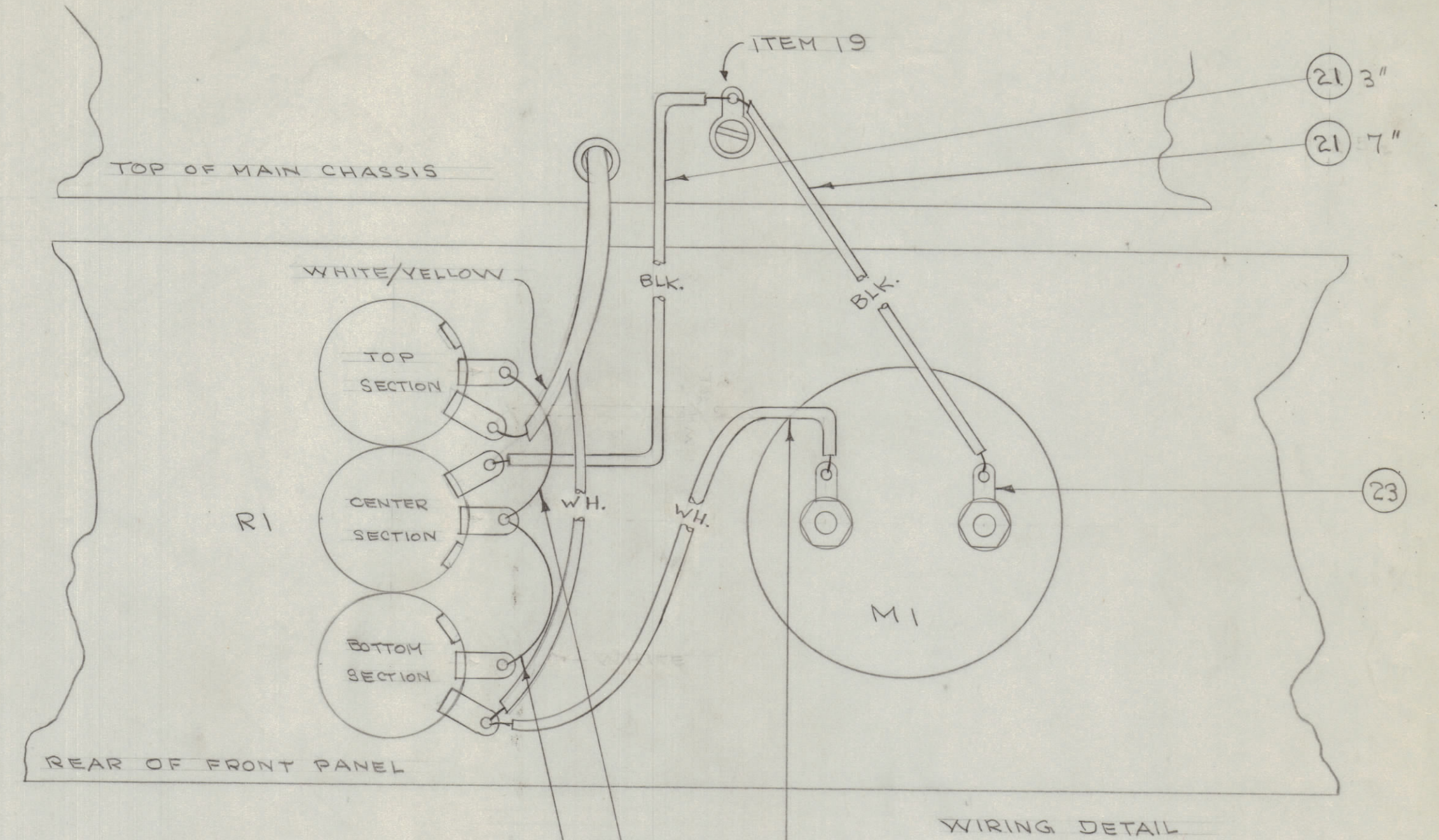
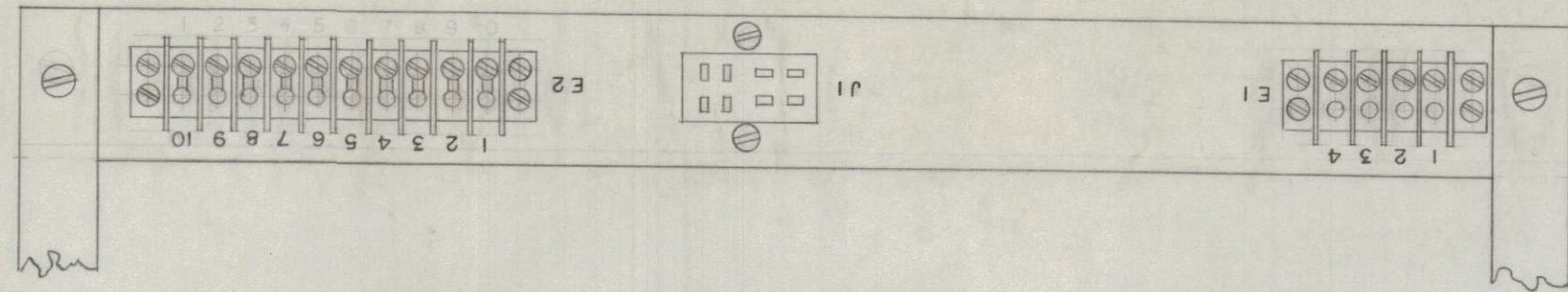


IF IT IS FOUND DESIRABLE TO CHANGE ANY TOLERANCE OR OTHER DETAIL SPECIFIED ON THIS DRAWING NOTIFY THE PURCHASER PROMPTLY.  
 MAXIMUM ALLOWABLE TOLERANCES HAVE BEEN DETERMINED AND DEVIATIONS WILL BE CAUSE FOR REJECTION. REMOVE ALL BURRS AND SHARP EDGES



STAMP TOP & REAR OF CHASSIS AS SHOWN  
 1/8" HIGH BLACK GOTHIC.

NOTE: LIPS HAVE BEEN OMITTED FOR CLARITY.

FINISH FOR HANDLES & FRONT PANEL  
 SCREW HEADS -  
 S 404 IRIDITE  
 S-114 ZINC CHROMATIC PRIMER  
 S-115 SMOOTH GRAY ENAMEL  
 OR PRIME & PAINT ACCORDING TO CUSTOMER SPEC.  
 (SEE FRONT PANEL COLOR)

NOTICE TO PERSONS RECEIVING THIS DRAWING

THE TECHNICAL MATERIEL CORPORATION claims proprietary right in the material disclosed hereon. This drawing is issued in confidence for engineering information only and may not be reproduced or used to manufacture anything shown hereon without permission from THE TECHNICAL MATERIEL CORPORATION to the user. This drawing is loaned for mutual assistance and is subject to recall at any time.

Property of:  
 THE TECHNICAL MATERIEL CORPORATION  
 MAMARONECK, NEW YORK

3	25	LW108MRC	WASHER, INT. TOOTH	
X	24	BS-100	SOLDER, SOFT (ALL WIRED TERMINALS)	
2	23	TE-132	TERMINAL LUG	
7"	22	SR1R 1/4(7)22U99	CABLE, INSULATED (WHITE)	
7 1/2"	21	SR1R 1/4(7)22U00	CABLE, INSULATED (BLK.)	
3"	20	WL-100-B	WIRE, BUSS BAR 24 GA.	
2	19	TE-104-3	TERMINAL, LOCKING	
1	18	TS102U01	SHIELD, TUBE	
1	17	6A5	TUBE, ELECTRON	V6
2	16	TS102U02	SHIELD, TUBE	
2	15	6BAG	TUBE, ELECTRON	V-4
1	14	O A 3	TUBE, ELECTRON	V8
1	13	12AX7	TUBE, ELECTRON	V3
4	12	TS103U02	SHIELD, TUBE	
3	11	12AU7	TUBE, ELECTRON	V-2-T
5	10	NTH0832BC11	NUT, HEX	
6	9	LWS08MRC	LOCKWASHER, SPLIT	
5	8	SCFS0832BC7	SCREW, MACHINE	
4	7	LWS10MRC	LOCKWASHER, SPLIT	
4	6	SCBS1032BC10	SCREW, MACHINE	
2	5	HA-102-2	HANDLE	
1	4	A-537	BOTTOM COVER ASSY	
1	3	A-531	TOP COVER ASSY.	
1	2	A-534	FRONT PANEL ASSY.	
1	1	A-532	CHASSIS, TERM. BD. ASSY.	

REQ. ITEM	PART NO.	DESCRIPTION	SYMBOL
THE TECHNICAL MATERIEL CORP. MAMARONECK, NEW YORK			
FINAL ASSEMBLY RSA-2			
TYPE & TEMPER	CDD 9/22/54 A. J. Jo J. C. J.		
DRAWN	O. P. O. J. Jo J. C. J.		
HEAT TREAT. SPEC.	CHECKED A. J. Jo J. C. J.		
SEE NOTE	SUPERSEDES RSA-1		
FINISH & SPEC. NO.	A-536 B		

MODEL	PROJECT NO.	ASSY. NO.	DATE
RSA-2	170		9-22-54
USED ON			

ISSUE	ITEM	CHANGED FROM	DATE	GN. NO.	DRAFTS	CHECKER	ENG. APP.
B	1	S-404 IRIDITE WAS S-101 CAUSTIC DIP ITEM 25 ADDED	12/7/54	1001	A.B.	EMW	
A	1		4/4/53	1	CDD	Jo J. C. J.	

ALL OTHERS	DEC. DIM. ± FRAC. DIM. ± ANGULAR DIM. ±	SCALE: DRILL PUNCH, COMMERCIAL STOCK SIZES AND MANUFACTURERS TOLERANCES ARE NOT INCLUDED.
------------	---	--