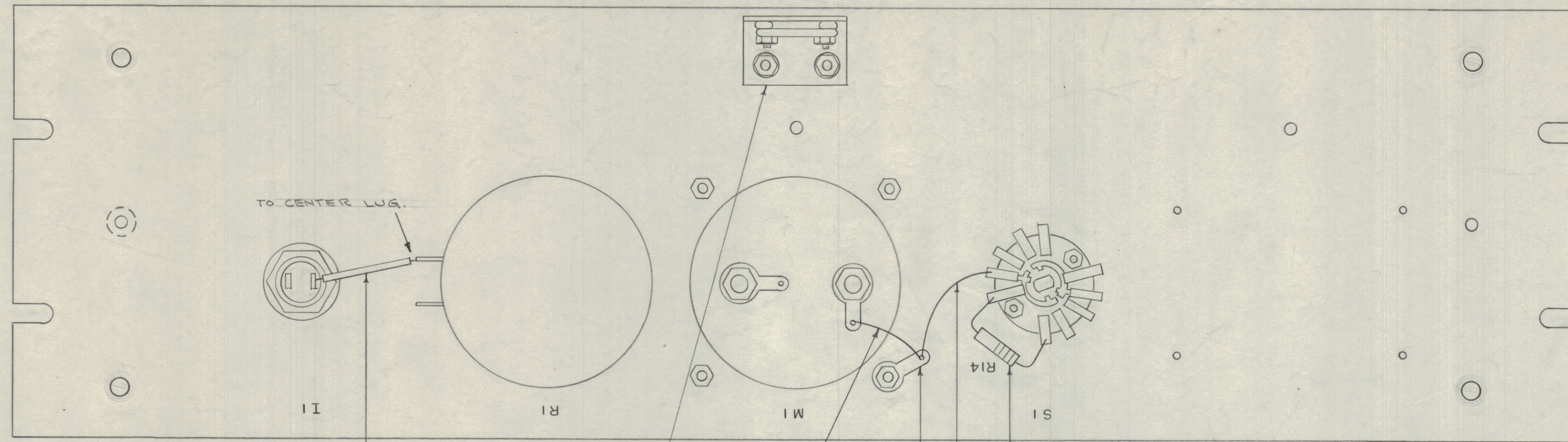
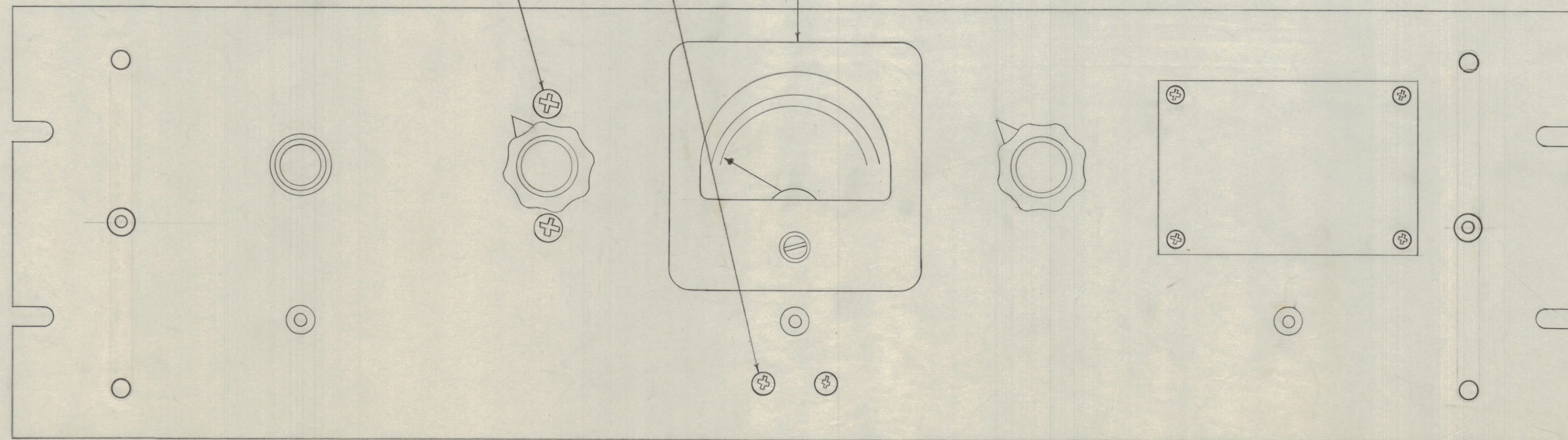
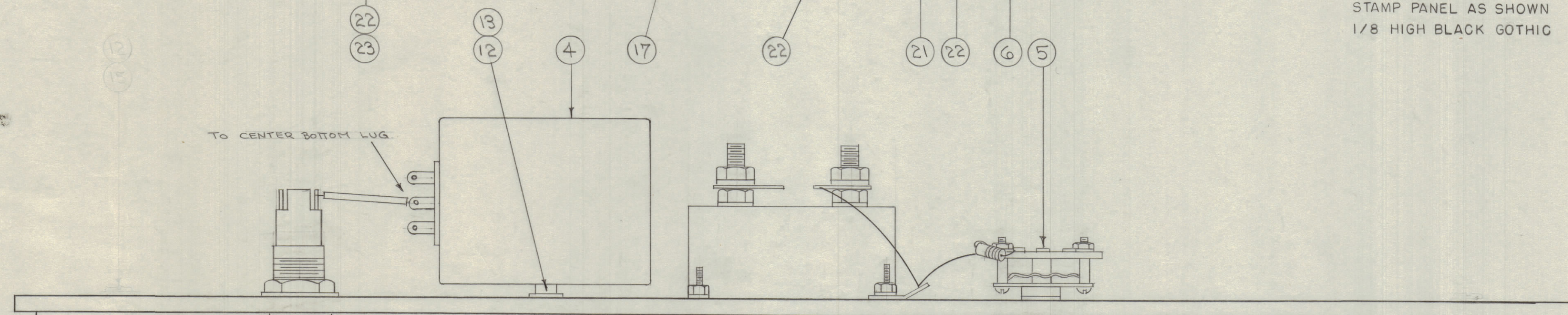


IF IT IS FOUND DESIRABLE TO CHANGE ANY TOLERANCE OR OTHER DETAIL SPECIFIED ON THIS DRAWING NOTIFY THE PURCHASER PROMPTLY.
 MAXIMUM ALLOWABLE TOLERANCES HAVE BEEN DETERMINED AND DEVIATIONS WILL BE CAUSE FOR REJECTION. REMOVE ALL BURRS AND SHARP EDGES



STAMP PANEL AS SHOWN
 1/8 HIGH BLACK GOTHIC



NOTICE TO PERSONS RECEIVING THIS DRAWING

THE TECHNICAL MATERIEL CORPORATION claims proprietary right in the material disclosed herein. This drawing is issued in confidence for engineering information only and may not be reproduced or used to manufacture anything shown hereon without permission from THE TECHNICAL MATERIEL CORPORATION to the user. This drawing is loaned for mutual assistance and is subject to recall at any time.

Property of:
 THE TECHNICAL MATERIEL CORPORATION
 MAMARONECK, NEW YORK

SEE SPEC. S-278 FOR
 CORRECT NAMEPLATE

| REQ. ITEM | PART NO. | DESCRIPTION | SYMBOL |
|-----------|--------------|--------------------------|--------|
| X 23 | PX-104-1-034 | INSULATION, SLEEVING | |
| X 22 | WL-100-7 | WIRE, BUSSBAR 22 GA | |
| 1 21 | TE-104-1 | TERMINAL, LOCKING | |
| 2 20 | NTH04408NB | NUT, HEX. | |
| 2 19 | LWEO4MRN | WASHER, LOCK | |
| 2 18 | SCFP04408NB | SCREW, MACHINE | |
| 1 17 | A-835 | BRACKET ASSY., COVER | |
| X 16 | BS-100 | SOLDER, SOFT | |
| # 15 | | DELETED | |
| # 14 | | DELETED | |
| 2 13 | TE-117-6 | STANDOFF, SPACER | |
| 2 12 | LWEO8MRN | WASHER, LOCK | |
| 2 11 | SCFP0832NB | SCREW, MACHINE | |
| 4 10 | SFB02565N3 | SCREW, THD. CUTTING | |
| 1 9 | NP-XXX | NAME PLATE | |
| 2 8 | MP-100-4 | KNOB, INST. TYPE | |
| 1 7 | BI-100-44 | LAMP | I1 |
| 1 6 | RC206F221K | RESISTOR, FIXED | R14 |
| 1 5 | SW-119 | SWITCH, ROTARY | S1 |
| 1 4 | RR-111 | "T" ATTENUATOR 60% 600 Ω | R1 |
| 1 3 | MR-101-3 | METER, LEVEL IND. | M1 |
| 1 2 | TS-106-1 | SOCKET, LENS | X11 |
| 1 1 | MS-385 | PANEL, FRONT | |

| | | | |
|------------------------------------------------------|--|--|--|
| THE TECHNICAL MATERIEL CORP. MAMARONECK, NEW YORK | | | |
| FRONT PANEL ASSY. | | | |
| MATERIAL WEIGHT PER PC | | | |
| RSA | | | |
| TYPE & TEMPER | | | |
| CDD 11-9-54 | | | |
| DRAWN | | | |
| ELEC. DES. APP. | | | |
| MECH. DES. APP. | | | |
| HEAT TREAT. SPEC. | | | |
| M.H.S. | | | |
| CHECKED | | | |
| FINAL APPROVAL | | | |
| SUPERCEDES | | | |
| RSA-1 | | | |
| FINISH & SPEC. NO. | | | |
| A-534 B | | | |

| | | | | | |
|---|------------------------|-------|--|--|--|
| 9 | RSA-3 ADDED TO USED ON | 5-9 | | | |
| 8 | (20) WBS NTH0440 PCB | 17-00 | | | |
| 7 | (17) WBS LWEO4MRN | 63-02 | | | |
| 6 | (18) WBS SCFP04408NB | | | | |
| 5 | (15) WBS SCBS0832BC10 | | | | |
| 4 | (14) WBS HA-102-3 | | | | |
| 3 | (12) WBS LWEO8MRN | | | | |
| 2 | (11) WBS SCFP0832NB | | | | |
| 1 | ITEM (10) WBS SC-110-1 | | | | |

| ISSUE | ITEM | CHANGED FROM | DATE | CH. NO. | DRAFTS | CHECKER | ENG. APP. |
|-------|------|--------------|------|---------|--------|---------|-----------|
| | | | | | | | |

ALL DEC. DIM. ±
 OTHERS FRAC. DIM. ±
 ANGULAR DIM. ±

DRILL, PUNCH, COMMERCIAL STOCK
 SIZES AND MANUFACTURERS
 TOLERANCES ARE NOT INCLUDED.

| | | | | |
|--------------|-------|-------------|-----------|---------|
| 1 | RSA-3 | | | 5-17-63 |
| 1 | RSA-2 | 170 | | 11-9-54 |
| REQ PER UNIT | MODEL | PROJECT NO. | ASSY. NO. | DATE |
| | | | | |

A-534 B