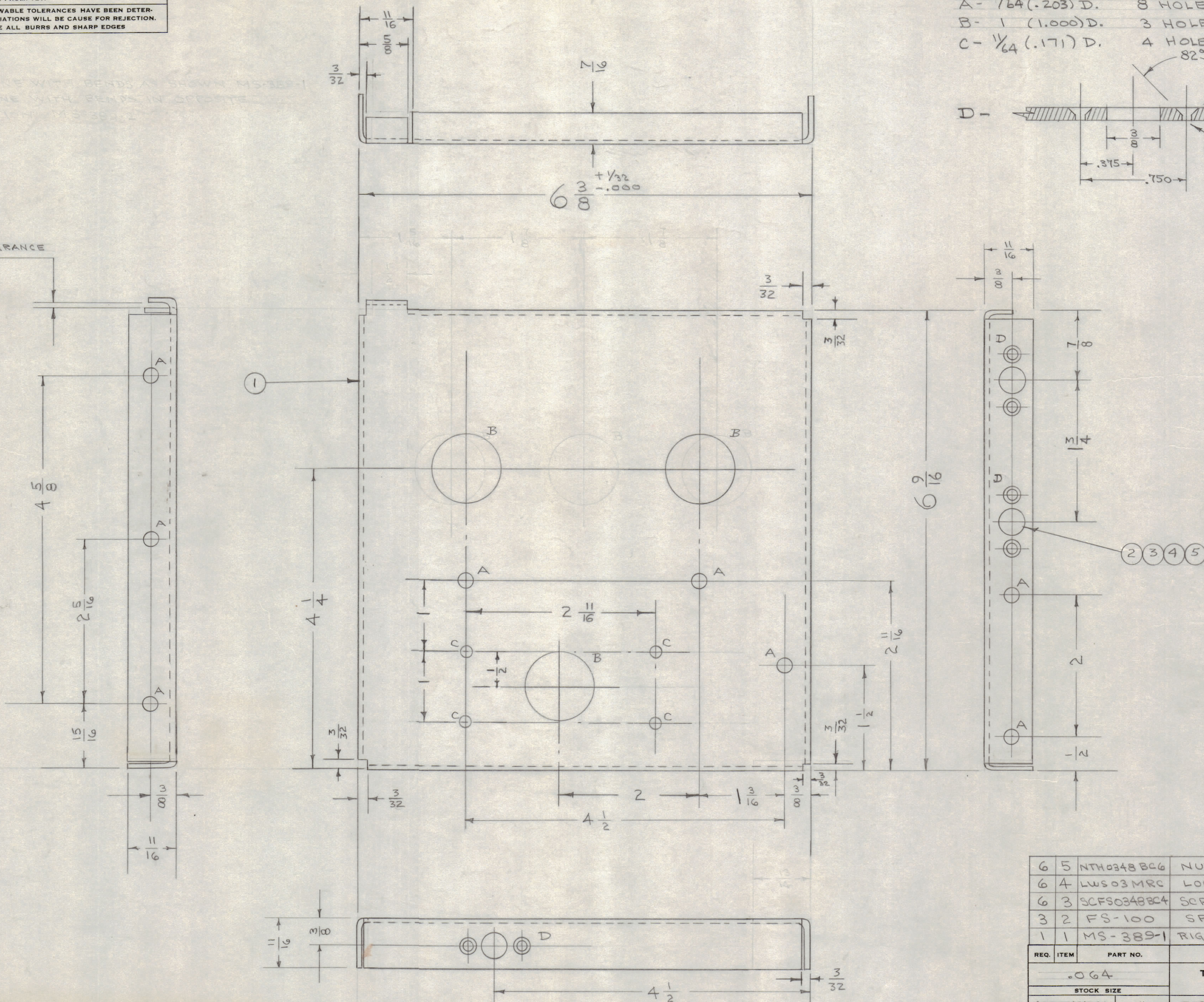


IF IT IS FOUND DESIRABLE TO CHANGE ANY TOLERANCE OR OTHER DETAIL SPECIFIED ON THIS DRAWING NOTIFY THE PURCHASER PROMPTLY.

MAXIMUM ALLOWABLE TOLERANCES HAVE BEEN DETERMINED AND DEVIATIONS WILL BE CAUSE FOR REJECTION. REMOVE ALL BURRS AND SHARP EDGES

NOTE
MAKE ONE WITH BENDS AS SHOWN MS-389-1
MAKE ONE WITH BENDS IN OPPOSITE
DIRECTION MS-389-2

.064 CLEARANCE



A - $\frac{13}{64}$ (.203) D. 8 HOLES REQ.
 B - 1 (1.000) D. 3 HOLES REQ.
 C - $\frac{1}{64}$ (.171) D. 4 HOLES REQ.
 D - $\frac{1}{16}$ D. 3 REQ.
 DRILL & C'SINK FOR 3-48 FLAT HEAD SCREW, 2 REQ.

A-529 A

REQ.	ITEM	PART NO.	DESCRIPTION	SYMBOL
6	5	NTH0348B06	NUT, HEX	
6	4	LWS03MRC	LOCK WASHER, SPLIT	
6	3	SCFS0348B04	SCREW, MACHINE	
3	2	FS-100	SPRING CLIP	
1	1	MS-389-1	RIGHT SIDE PLATE (NO DWG)	

.064		THE TECHNICAL MATERIEL CORP.	
STOCK SIZE		MAMARONECK, NEW YORK	
ALUMINUM		RIGHT SIDE PLATE	
MATERIAL		RSC-1	
WEIGHT PER PC.		CDD 9/9/53	
529-H32		G.T.O.	
TYPE & TEMPER		ELEC. DES. APP.	
HEAT TREAT. SPEC.		MECH. DES. APP.	
S404-YEL-IRIDITE		G.T.O.	
FINISH & SPEC. NO.		CHECKED	
		FINAL APPROVAL	
		A-529 A	

A	1	S404 IRIDITE WAS S101-CAUSTIC DIP	12-8 59	1001	EMW
ISSUE	ITEM	CHANGED FROM	DATE	CN. NO. DRAFTS	CHECKER
TOLERANCES		SCALE: #			
ALL OTHERS	DEC. DIM. $\pm .005$ FRAC. DIM. $\pm \frac{1}{64}$ ANGULAR DIM. \pm	DRILL, PUNCH, COMMERCIAL STOCK SIZES AND MANUFACTURERS TOLERANCES ARE NOT INCLUDED.			

RSC-1 (A,B,C,D,E)	170	9-9-53
MODEL	PROJECT NO.	ASS'Y. NO.
		DATE
USED ON		