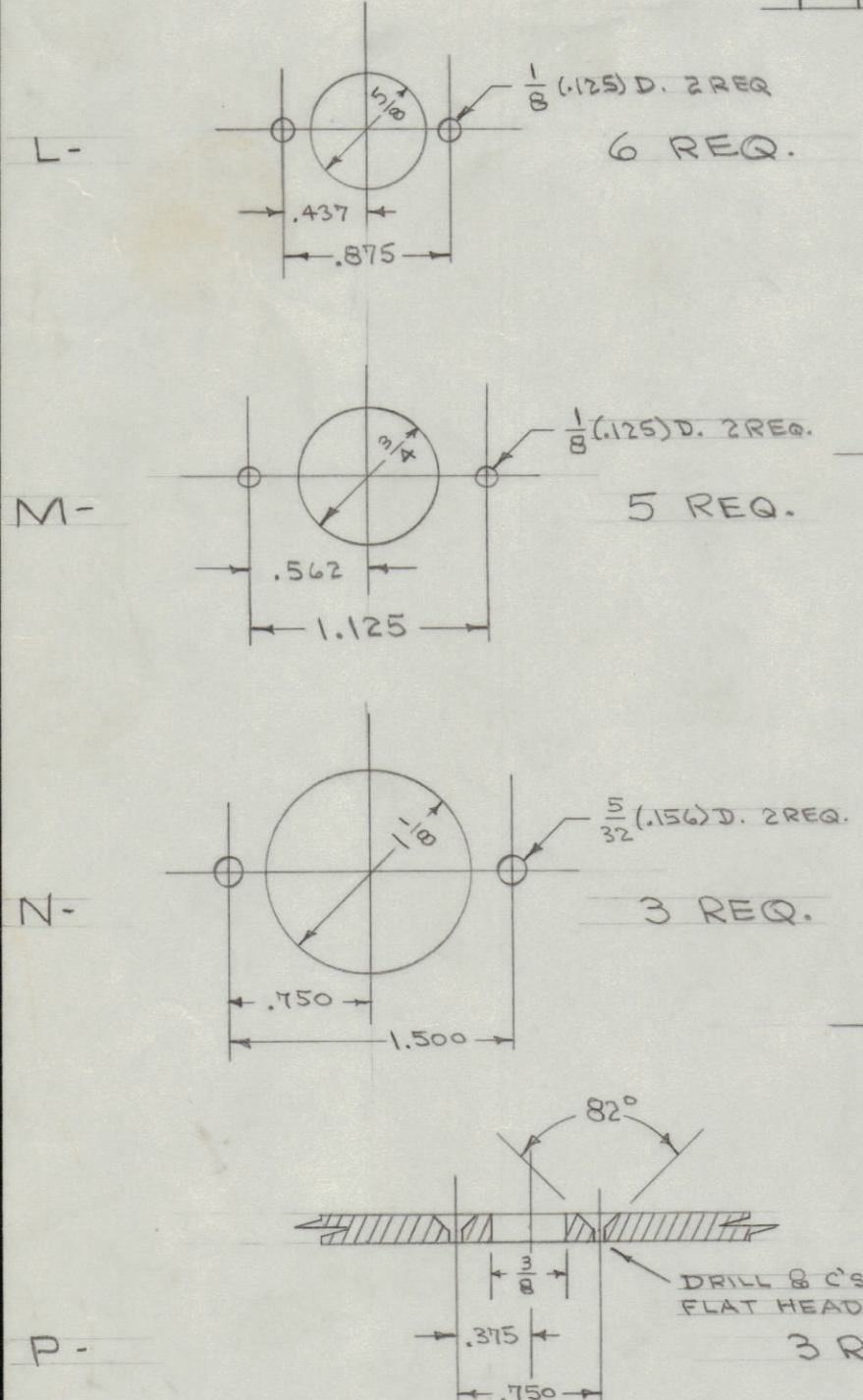
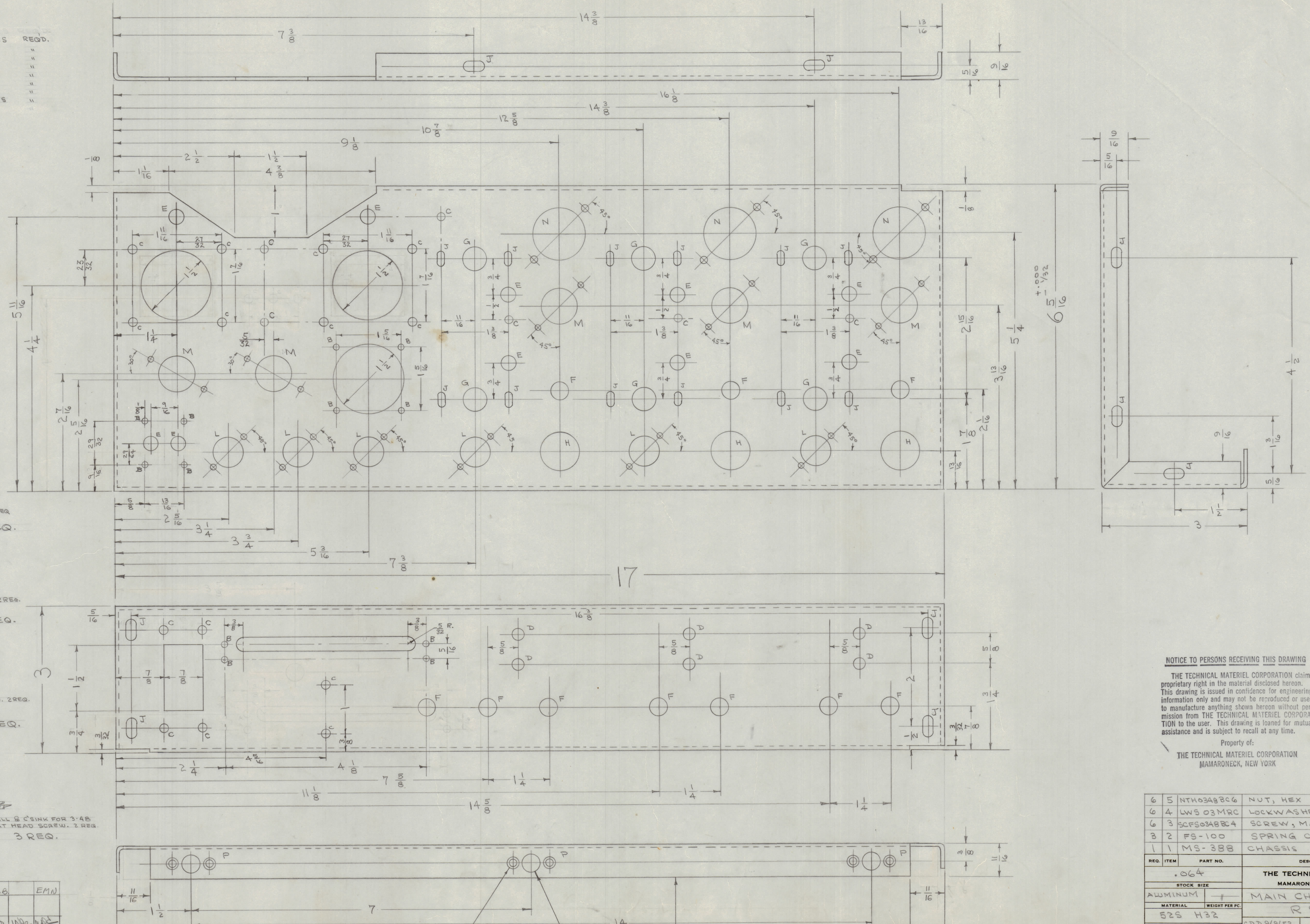


IF IT IS FOUND DESIRABLE TO CHANGE ANY TOLERANCE OR OTHER DETAIL SPECIFIED ON THIS DRAWING NOTIFY THE PURCHASER PROMPTLY.
 MAXIMUM ALLOWABLE TOLERANCES HAVE BEEN DETERMINED AND DEVIATIONS WILL BE CAUSE FOR REJECTION. REMOVE ALL BURRS AND SHARP EDGES

B - 3/64 (.140) D.	8 HOLES	REQD.
C - 1/64 (.125) D.	"	"
D - 1/4 (.250) D.	"	"
E - 5/16 (.312) D.	"	"
F - 3/8 (.375) D.	"	"
G - 1/2 (.500) D.	"	"
H - 13/16 (.812) D.	"	"
J - 1/16 X 1/32 SLOT	21 SLOTS	"



ISSUE	ITEM	CHANGED FROM	DATE	CN. NO.	DRAFTS	CHECKER	ENG. APP.
C	1	S-404 IRIDITE WAS S-101 CAUSTIC DIP	12/7/53	1001	A.B.	EMN	
B	1	4 "B" HOLES ADDED					
B	2	2 "E" HOLES ADDED					
B	3	2 "D" HOLES ADDED					
A	2	X HOLES DELETED	7/23/53	1	COO	WDE	
A	1	A HOLES DELETED					

NOTICE TO PERSONS RECEIVING THIS DRAWING
 THE TECHNICAL MATERIEL CORPORATION claims proprietary right in the material disclosed hereon. This drawing is issued in confidence for engineering information only and may not be reproduced or used to manufacture anything shown hereon without permission from THE TECHNICAL MATERIEL CORPORATION to the user. This drawing is loaned for mutual assistance and is subject to recall at any time.
 Property of:
 THE TECHNICAL MATERIEL CORPORATION
 MAMARONECK, NEW YORK

REQ. ITEM	PART NO.	DESCRIPTION	SYMBOL
6	5 NTH0348BC6	NUT, HEX	
6	4 LWS 03MRC	LOCKWASHER, SPLIT	
3	3CF50348BC4	SCREW, MACHINE	
3	2 FS-100	SPRING CLIP	
1	1 MS-388	CHASSIS (NO DRAWING)	
STOCK SIZE			
ALUMINUM			
MATERIAL WEIGHT PER PC.			
525 H32			
TYPE & TEMPER			
CDD:9/9/53 G.T.O			
DRAWN			
HDO: 7/29/53 G.T.O			
HEAT TREAT. SPEC.			
CHECKED			
FINAL APPROVAL			
A-524 C			

MODEL	PROJECT NO.	ASSY. NO.	DATE
RSC(A,B,C,D,E)	170		9-9-53
USED ON			

A-524 C