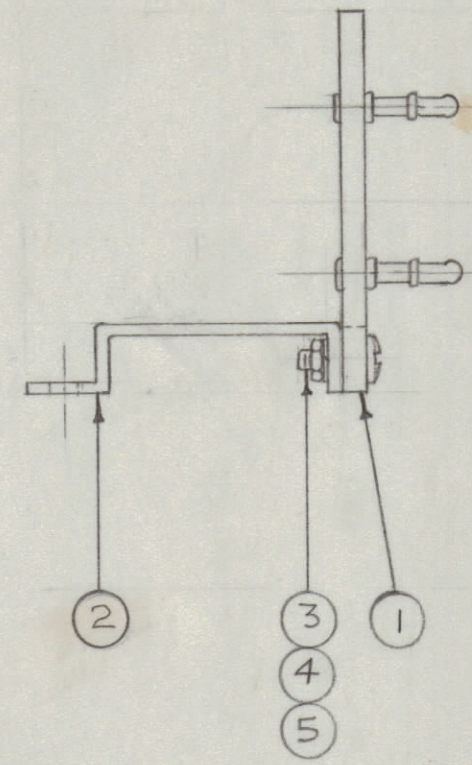


IF IT IS FOUND DESIRABLE TO CHANGE ANY TOLERANCE OR OTHER DETAIL SPECIFIED ON THIS DRAWING NOTIFY THE PURCHASER PROMPTLY.
 MAXIMUM ALLOWABLE TOLERANCES HAVE BEEN DETERMINED AND DEVIATIONS WILL BE CAUSE FOR REJECTION. REMOVE ALL BURRS AND SHARP EDGES

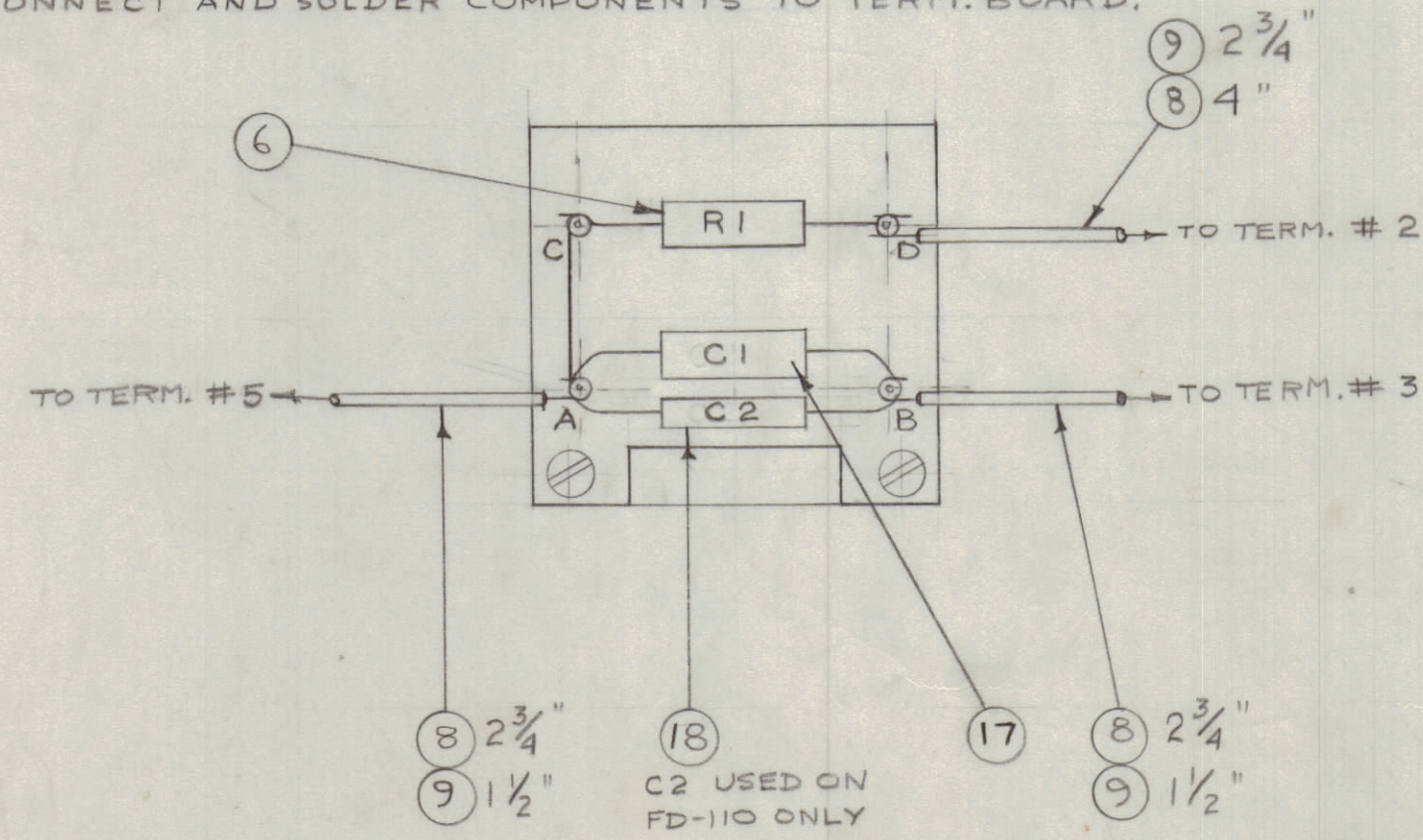
STEP 1

1. SECURE BRACKET TO TERMINAL BOARD.



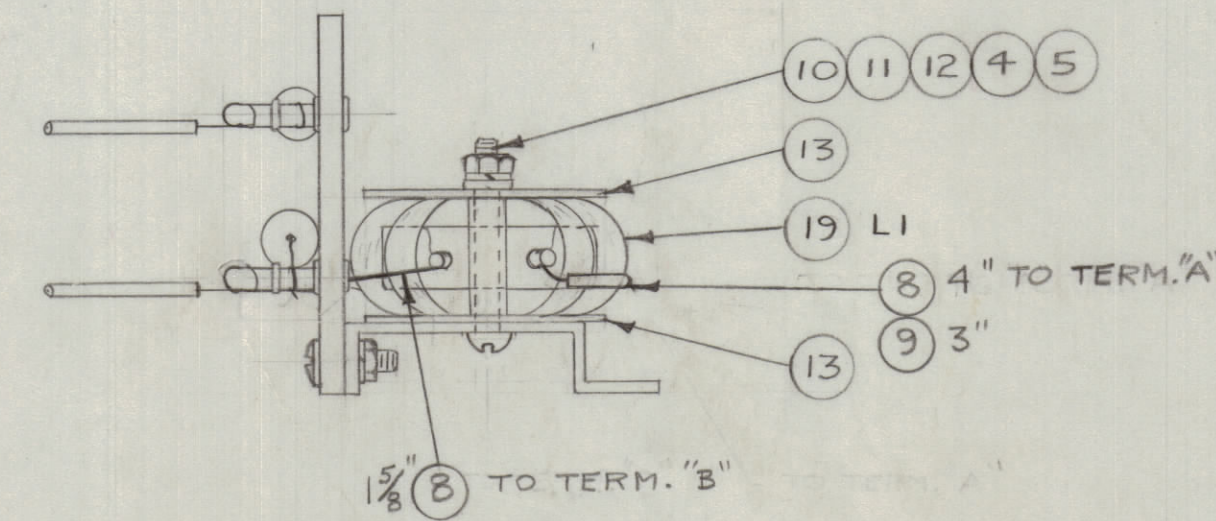
STEP 2

1. CONNECT AND SOLDER COMPONENTS TO TERM. BOARD.



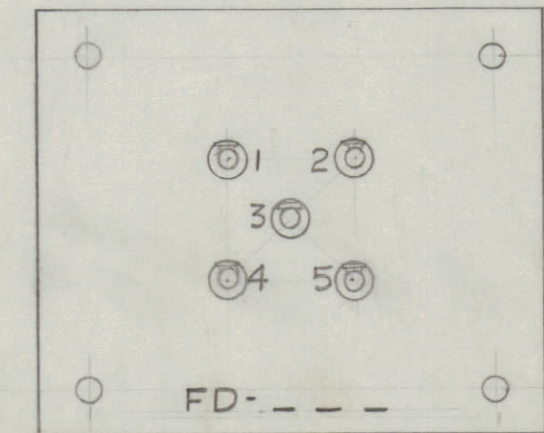
STEP 3

1. SECURE TORROID COIL TO BRACKET (AS SHOWN).
2. SOLDER COIL LEADS TO TERMINALS "A" & "B" (AS SHOWN).



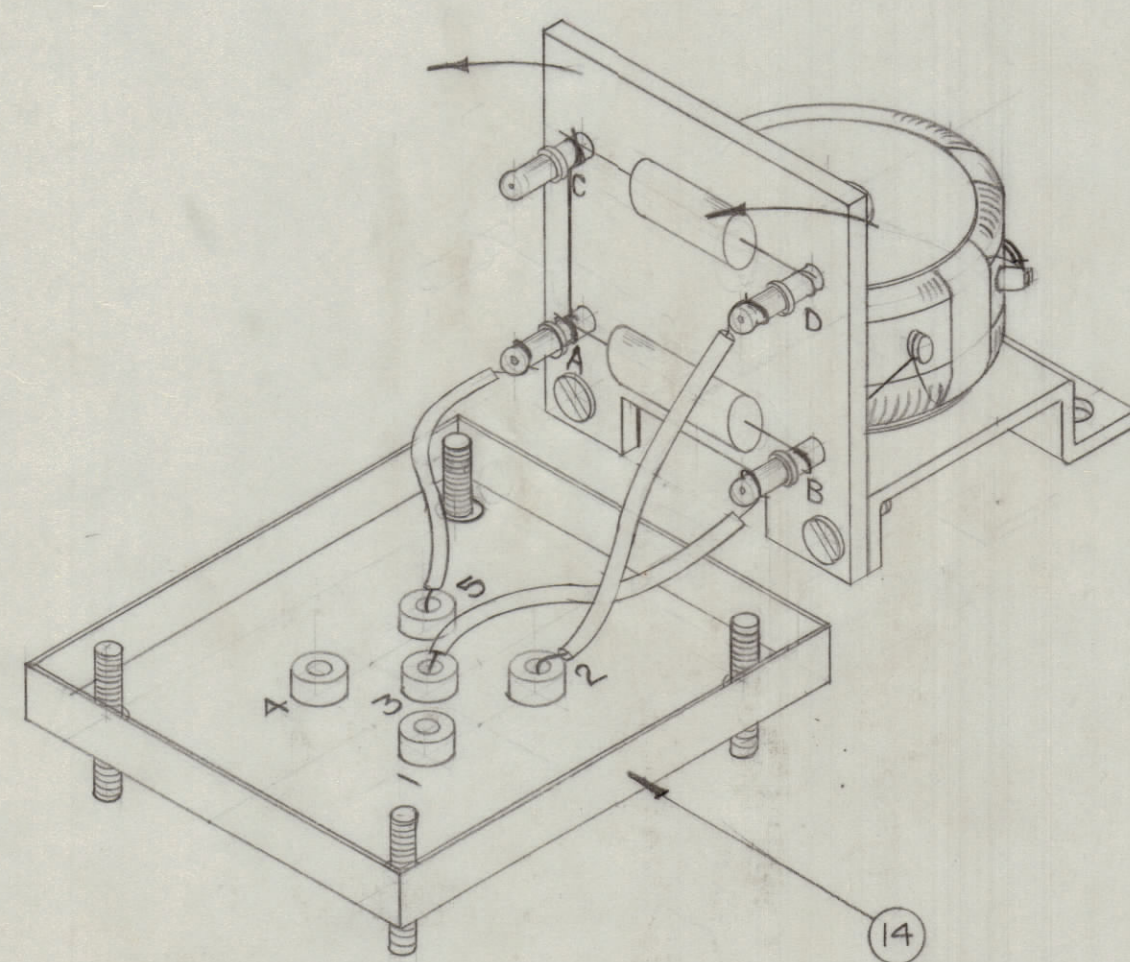
STEP 4

1. STAMP BOTTOM COVER WITH FD ---
- 1/8" METAL STAMP (GOTHIC) AS SHOWN IN DIAGRAM



STEP 5

1. CONNECT AND SOLDER WIRES AS SHOWN (SEE STEP 2).
2. SEAL WITH SOLDER ALL EXTERNAL LUGS ON BOTTOM OF CAN.



STEP 6

1. SECURE BRACKET TO BOTTOM COVER.
2. INSERT BRACKET ASSY. AND CAN BOTTOM INTO CAN.
3. TEST AS PRESCRIBED IN TMC SPECIFICATION NO. 184. PROCEED ONLY IF TEST IS PASSED.
4. SOLDER ALL AROUND BOTTOM EDGE.
5. LINE INNER SIDES OF CAN WITH ITEM #7.
6. POUR COMPOUND (APPROX. 1" FROM TOP).
7. INSERT TOP COVER.
8. REPEAT NO. 3 OF STEP 6.
9. SOLDER ALL AROUND TOP EDGE.

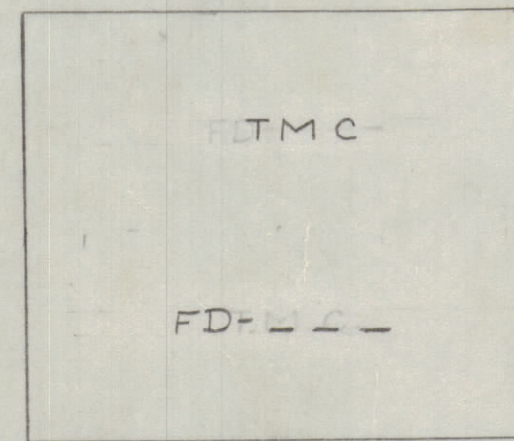
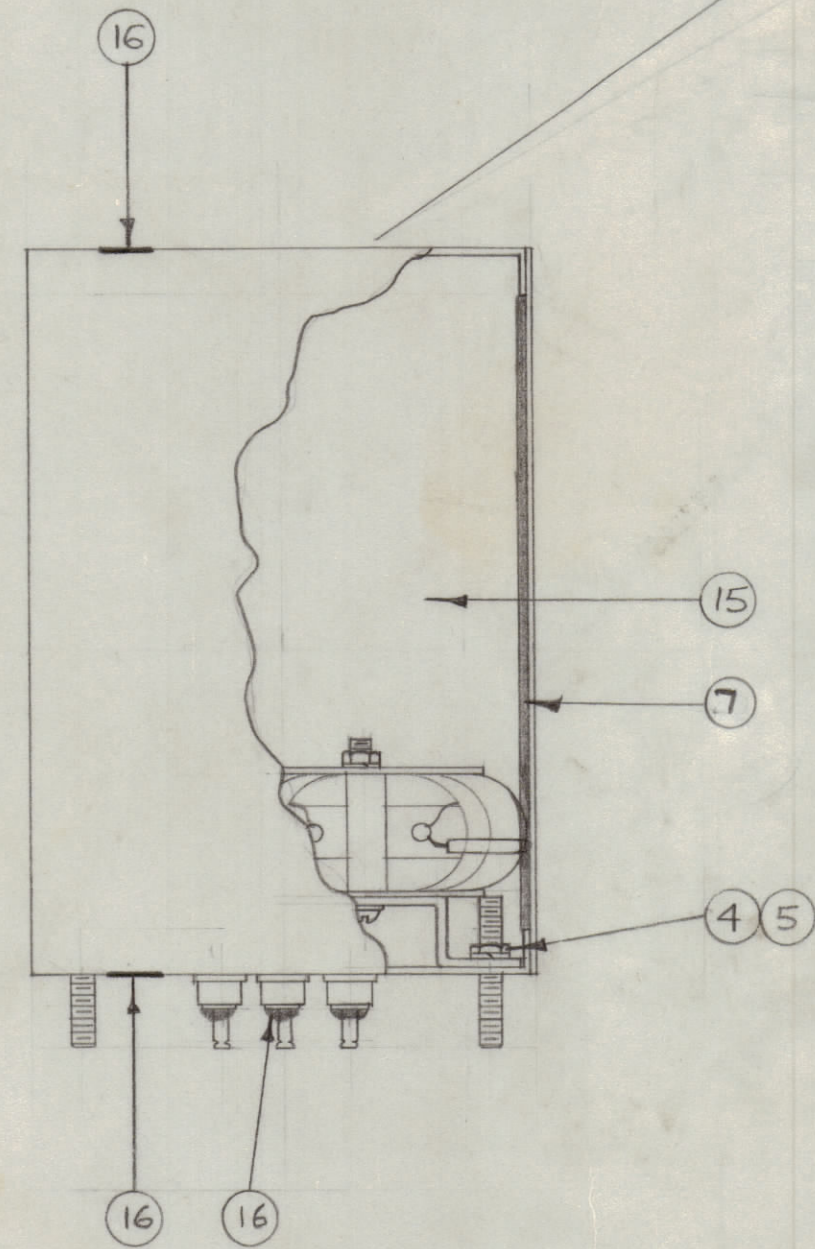


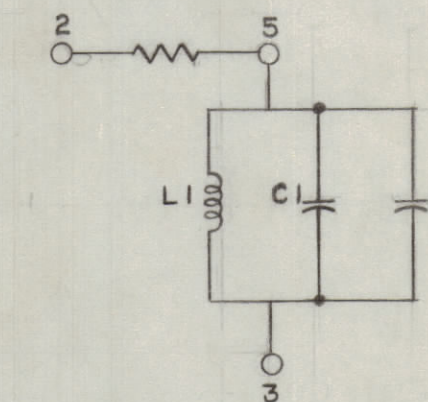
DIAGRAM OF TOP COVER (SEE STEP 6)

STEP 7

1. PAINT CAN WITH S-115 (SMOOTH GREY ENAMEL) WITH THE EXCEPTION OF STUDS AND TERMINALS.

STEP 8

1. MARK LETTERS AND NUMERALS WITH 1/8 HIGH RUBBER STAMP, (GOTHIC) AS SHOWN IN DIAGRAM.
2. COAT WITH CLEAR FUNGICIDAL LACQUER (S-113)



SCHMATIC DIAGRAM

NOTE: C2 USED ONLY ON FD-110

NON - COMMON PARTS

T.M.C. MODEL NO.	ITEM # 17 C1	ITEM # 18 C2	ITEM # 19 L1
FD-101	CN-103-40	NONE	CL-106-7
FD-104	CN-103-35	NONE	CL-106-7
FD-107	CM35C103G	NONE	CL-106-7
FD-110	CM35C103G	CM20C102G	CL-106-39
FD-113	CM35C682G	NONE	CL-106-39

COMMON PARTS

REQ.	ITEM	PART NO.	DESCRIPTION	SYMBOL
X	16	BS-100	SOLDER, SOFT	
X	15	GL-100	COMPOUND, POTTING	
1	14	BX-111	CAN & COVER	
2	13	WA-110-1	WASHER, PAPER	
1	12	FWO6MRC	WASHER, FLAT	
5/8"	11	PX-104-1-.133	INSULATION, SLEEVING (SIZE 8)	
1	10	SCRS0632BC16	SCREW, MACH.	
9"	9	PX-104-1-.022	INSULATION, SLEEVING (SIZE 24)	
15 1/4"	8	WL-100-8	WIRE, BUSS (SIZE 24)	
1	7	IM-128	INSULATION, SIDES	
1	6	RC30GF823K	RESISTOR, FIXED	R1
5	5	NTH0632BC8	NUT, HEX.	
5	4	LW506MRC	LOCKWASHER, SPLIT	
2	3	SCBS0632BC6	SCREW, MACH.	
1	2	MS-231	BRACKET, FILTER	
1	1	A-522	TERM. BD. ASS'Y.	

REQ.	ITEM	PART NO.	DESCRIPTION	SYMBOL
			THE TECHNICAL MATERIEL CORP. MAMARONECK, NEW YORK	
			STOCK SIZE	
			FINISH & SPEC. NO.	
			TYPE & TEMPER	
			MATERIAL	
			WEIGHT PER PC.	
			HEAT TREAT. SPEC.	
			FINISH & SPEC. NO.	

MODEL	PROJECT NO.	ASSY. NO.	DATE
FD-113	170	A-	9/9/53
FD-110	170	A-	9/9/53
FD-107	170	A-	9/9/53
FD-104	170	A-	9/9/53
FD-101	170	A-	9/9/53

NOTICE TO PERSONS RECEIVING THIS DRAWING

THE TECHNICAL MATERIEL CORPORATION claims proprietary right in the material disclosed herein. This drawing is issued in confidence for engineering information only and may not be reproduced or used to manufacture anything shown herein without permission from THE TECHNICAL MATERIEL CORPORATION to the user. This drawing is loaned for mutual assistance and is subject to recall at any time.

Property of:
 THE TECHNICAL MATERIEL CORPORATION
 MAMARONECK, NEW YORK

ISSUE	ITEM	CHANGED FROM	DATE	CN. NO.	DRAFTS	CHECKER	ENG. APP.
A	1	NO 5 & 8 OF STEP 6 ADDED	11/20/53	6		M.H.S.	A.N.J.

ALL OTHERS	DEC. DIM. ±	FRAC. DIM. ±	ANGULAR DIM. ±	DRILL, PUNCH, COMMERCIAL STOCK SIZES AND MANUFACTURERS TOLERANCES ARE NOT INCLUDED.

A
A-523