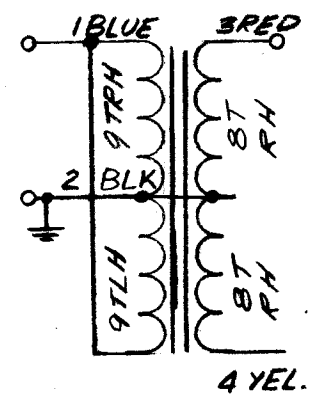
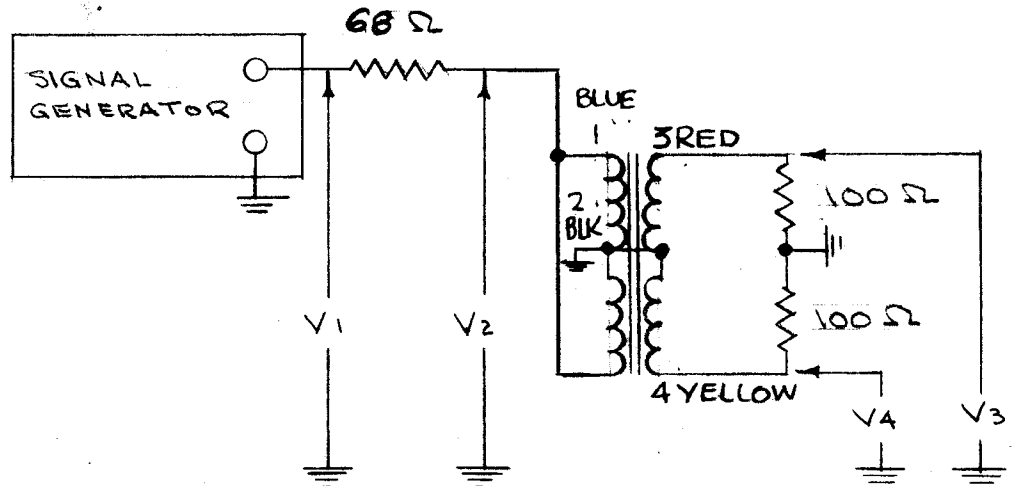
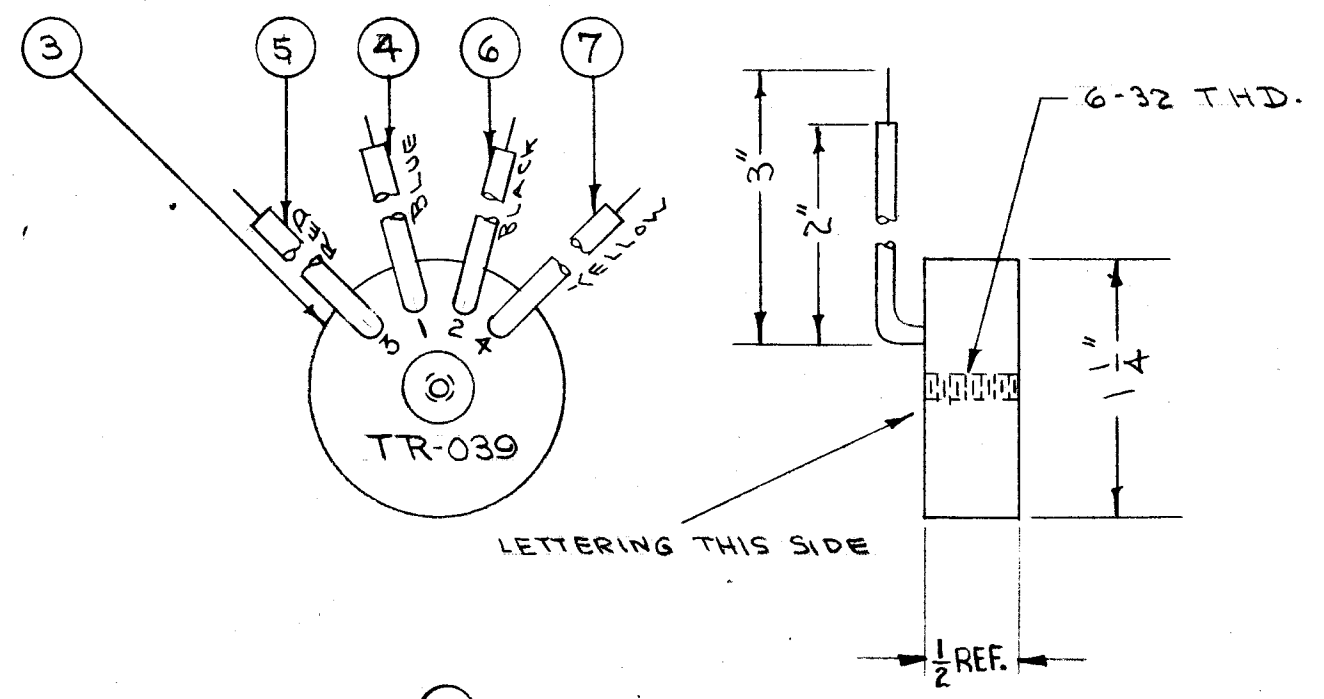


IF IT IS FOUND DESIRABLE TO CHANGE ANY TOLERANCE OR OTHER DETAIL SPECIFIED ON THIS DRAWING NOTIFY THE PURCHASER PROMPTLY.

MAXIMUM ALLOWABLE TOLERANCES HAVE BEEN DETERMINED AND DEVIATIONS WILL BE CAUSE FOR REJECTION. REMOVE ALL BURRS AND SHARP EDGES

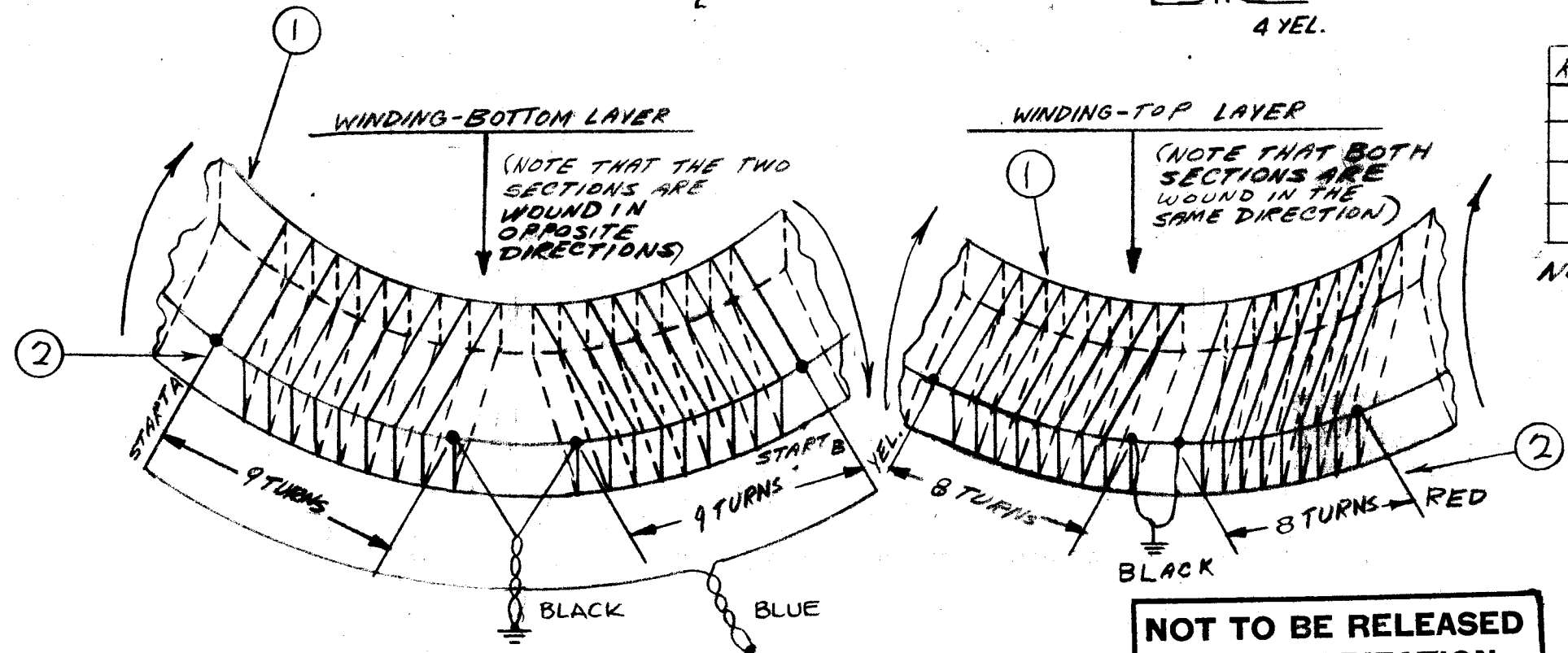
A-512 D



F-M/CYCLES

RF-VOLTS	F=2MC	F=4MC	F=8MC	F=16MC	F=32MC
V-1	1.0	1.0	1.0	1.0	1.0
V-2	0.5±0.1	0.5±0.1	0.5±0.1	0.5±0.1	0.5±0.1
V-3	0.4±.05	0.4±.05	0.4±.05	0.4±.05	0.4±.05
V-4	0.4±.05	0.4±.05	0.4±.05	0.4±.05	0.4±.05

NOTE: MAXIMUM DIFFERENCE V3 AND V4 AT ANY FREQUENCY TO BE LESS THAN 0.02V.



REQ.	ITEM	PART NO.	DESCRIPTION	SYMBOL
2"	7	PX 104-2-022	INSULATION, SLEEVING (YEL.)	
2"	6	PX 104-1-022	" " (BLK.)	
2"	5	PX 104-3-022	" " (RED)	
2"	4	PX 104-6-022	" " (BLUE)	
X	3	GL106	PLASTIC POTTING COMPOUND	
X	2	WI 102-9-9	WIRE	
1	1	CI 104	CORE, TOROID	

ISSUE	ITEM	CHANGED FROM	DATE	CN. NO.	DRAFTS	CHECKER	ENG. APP.
D	1	COMPLETELY REVISED	4/26/64	5418	M.V.V.	C/S	
C	1	UPDATED & REVISED	8.17.64	12101	W.B.	@	
B		BLUE/RED REVERSED	7-3-62	6900	R.T.		
A	1	REDRAWN - WIRE NOS. CHGD.	3/5/54	1	C.D.D.		

NOT TO BE RELEASED W/O AUTHORIZATION

AUTH. BY: _____

DATE: _____

TOLERANCES		SCALE:	1	DAC-13	E3151
ALL OTHERS	DEC. DIM. ± FRAC. DIM. ± ANGULAR DIM. ±	#	1	DAC-3	
	DRILL, PUNCH, COMMERCIAL STOCK SIZES AND MANUFACTURERS TOLERANCES ARE NOT INCLUDED.		REQ. PER UNIT	MODEL	PROJECT NO.
					ASS'Y. NO.
					DATE
					USED ON

STOCK SIZE	THE TECHNICAL MATERIEL CORP.		
#	MAMARONECK, NEW YORK		
#	TR-039, ASSEMBLY		
MATERIAL	WEIGHT PER PC.		
#			
TYPE & TEMPER	C.D.D. 3-9-54	QRS	WJ
#	DRAWN	ELEC. DES. APP.	MECH. DES. APP.
HEAT TREAT. SPEC.	WJ	QRS	
#	CHECKED	FINAL APPROVAL	
FINISH & SPEC. NO.		A-512	D