

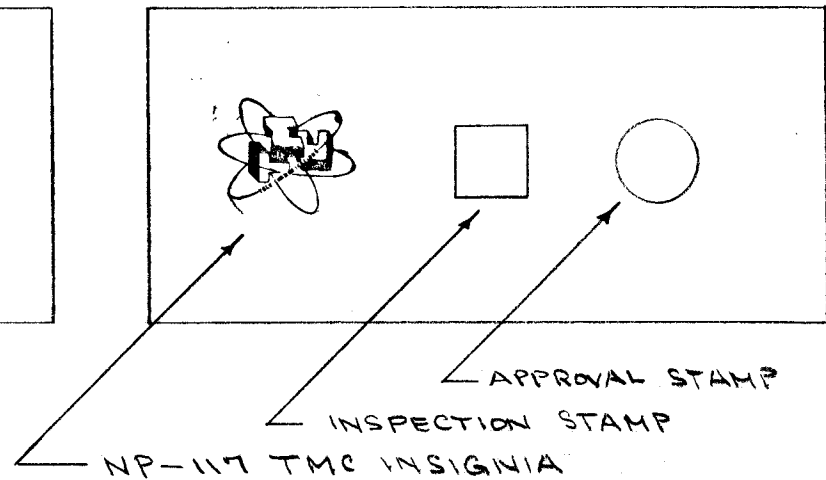
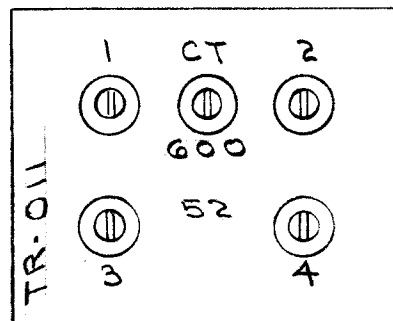
IF IT IS FOUND DESIRABLE TO CHANGE ANY TOLERANCE OR OTHER DETAIL SPECIFIED ON THIS DRAWING NOTIFY THE PURCHASER PROMPTLY.

MAXIMUM ALLOWABLE TOLERANCES HAVE BEEN DETERMINED AND DEVIATIONS WILL BE CAUSE FOR REJECTION. REMOVE ALL BURRS AND SHARP EDGES

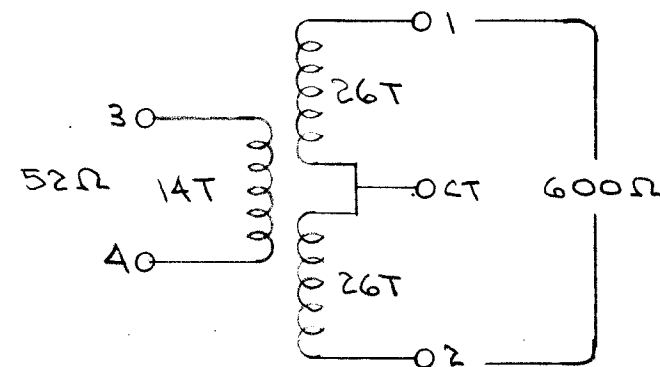
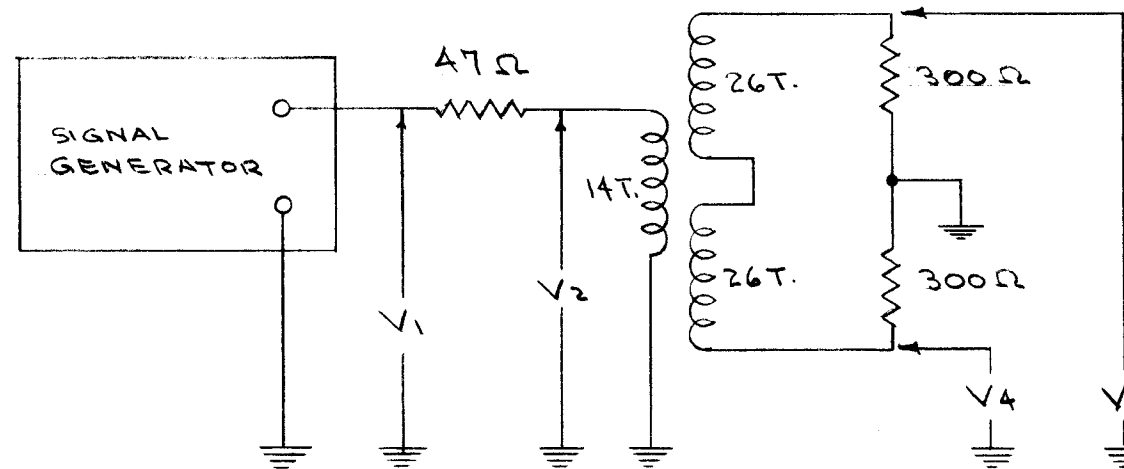
METAL STAMP BEFORE PAINTING
 1/8 HIGH BLACK GOTHIC STAMPING AFTER PAINTING.

S-114 - ZINC CHROMATE PRIMER.

S-115 - SMOOTH GREY ENAMEL

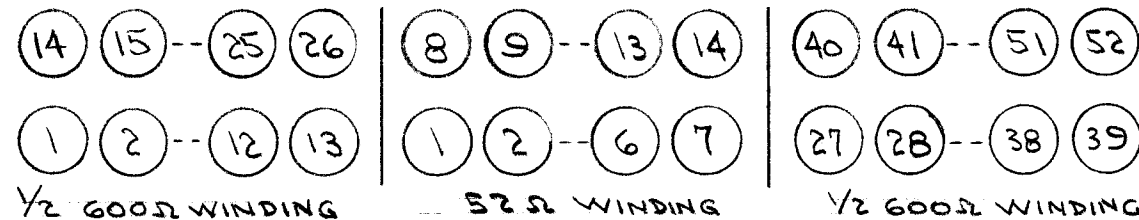
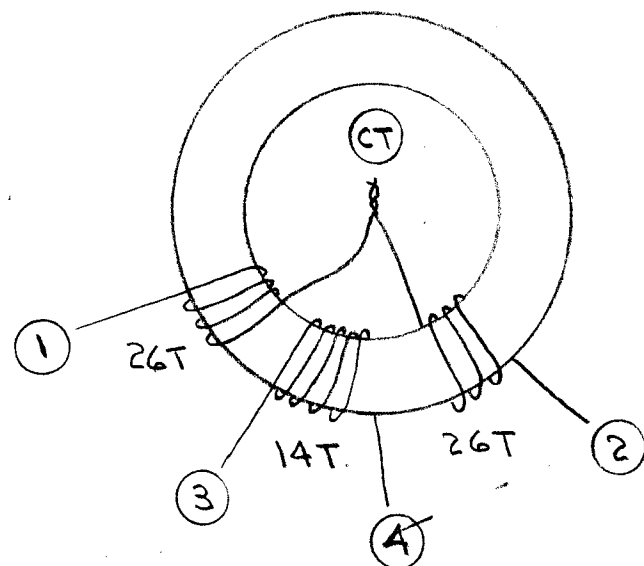


B
A-511



f. Kc.	RF VOLTS *			
	V ₁	V ₂	V ₃	V ₄
100	1.0	.48	.84	.86
400	1.0	.50	.93	.88
1600	1.0	.60	.91	.78

* H.P. VTVM.



**NOT TO BE RELEASED
 W/O AUTHORIZATION**

AUTH. BY: _____

DATE: _____

REQ.	ITEM	PART NO.	DESCRIPTION	SYMBOL
1	5	NP-117	TMC INSIGNIA	
X	4	BS-100	SOLDER, SOFT	
X	3	WI-102-9	WIRE	
1	2	CI-104	CORE	
1	1	BX-110	CASE	
STOCK SIZE			THE TECHNICAL MATERIEL CORP. MAMARONECK. NEW YORK	
MATERIAL			TRANSFORMER TR-011	
WEIGHT PER PC.			100-1600 Kc. 600-70 Z	
TYPE & TEMPER			C.D.D. 3-15-54	
HEAT TREAT. SPEC.			DRAWN: <i>WJC</i> ELEC. DES. APP. <i>WJC</i> MECH. DES. APP. <i>WJC</i>	
FINISH & SPEC. NO.			CHECKED: <i>WJC</i> FINAL APPROVAL: <i>WJC</i>	
SEE NOTE			A-511 B	

ISSUE	ITEM	CHANGED FROM	DATE	CN. NO.	DRAFTS	CHECKER	ENG. APP.
B	1	NP-117 WAS NP-136	5/12/55	2	JAG	WJC	WJC
A	1	REDRAWN ITEM SADDLED	3/15/54	1	C.D.D.	WJC	WJC

TOLERANCES

SCALE: *1/8"*

ALL OTHERS: DEC. DIM. ±, FRAC. DIM. ±, ANGULAR DIM. ±

DRILL, PUNCH, COMMERCIAL STOCK SIZES AND MANUFACTURERS TOLERANCES ARE NOT INCLUDED.

REQ. PER UNIT	MODEL	PROJECT NO.	ASSY. NO.	DATE

USED ON