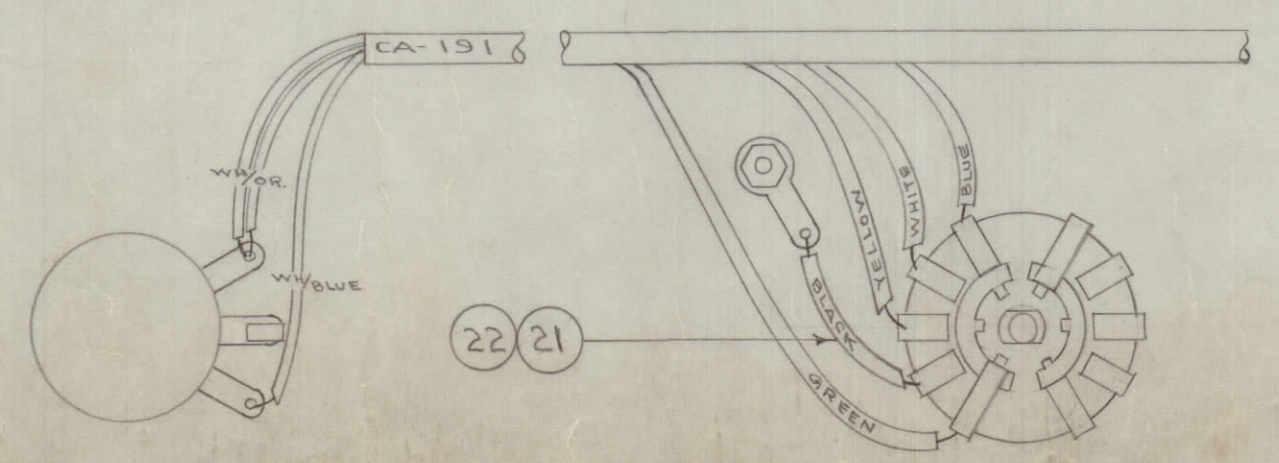
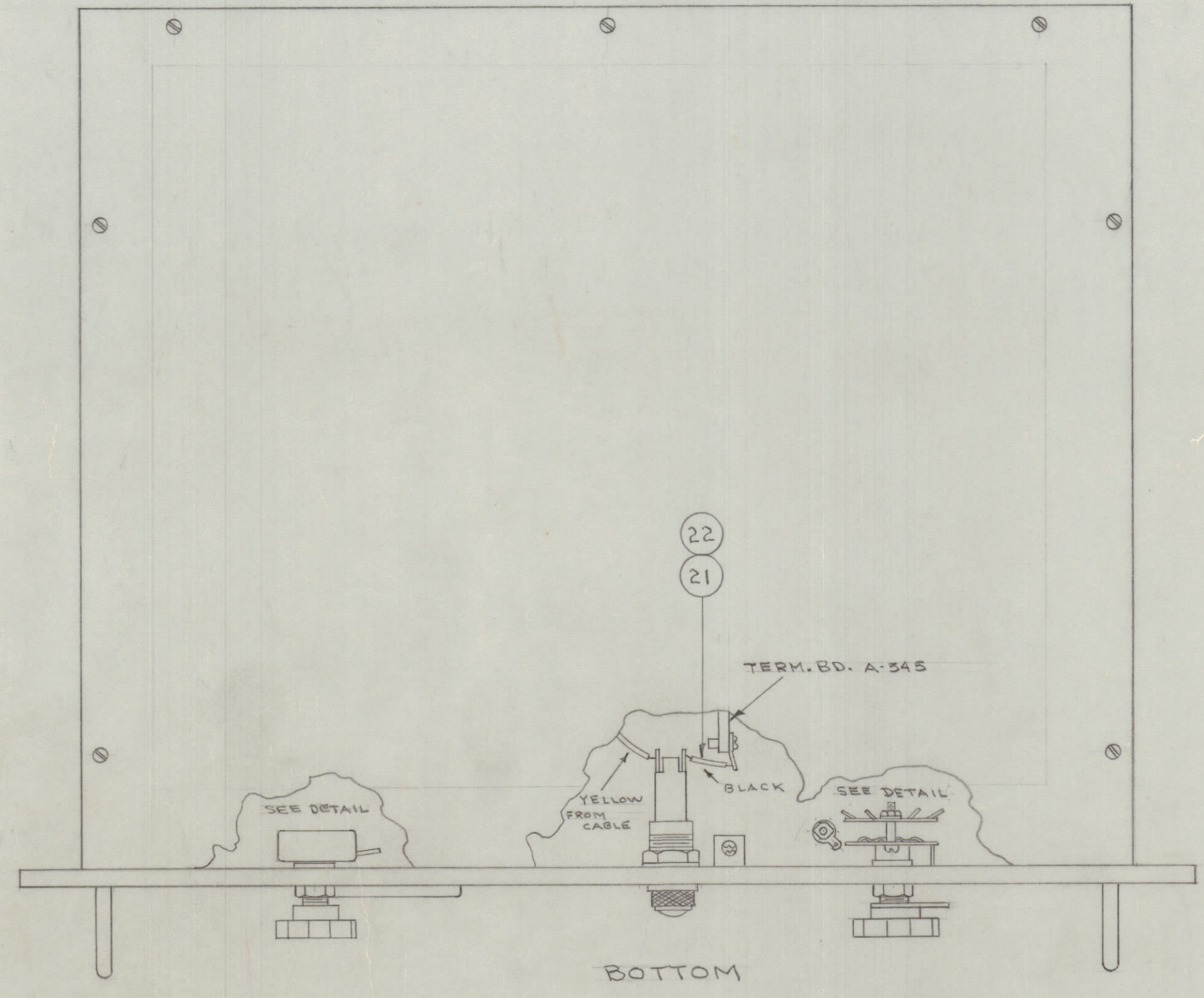
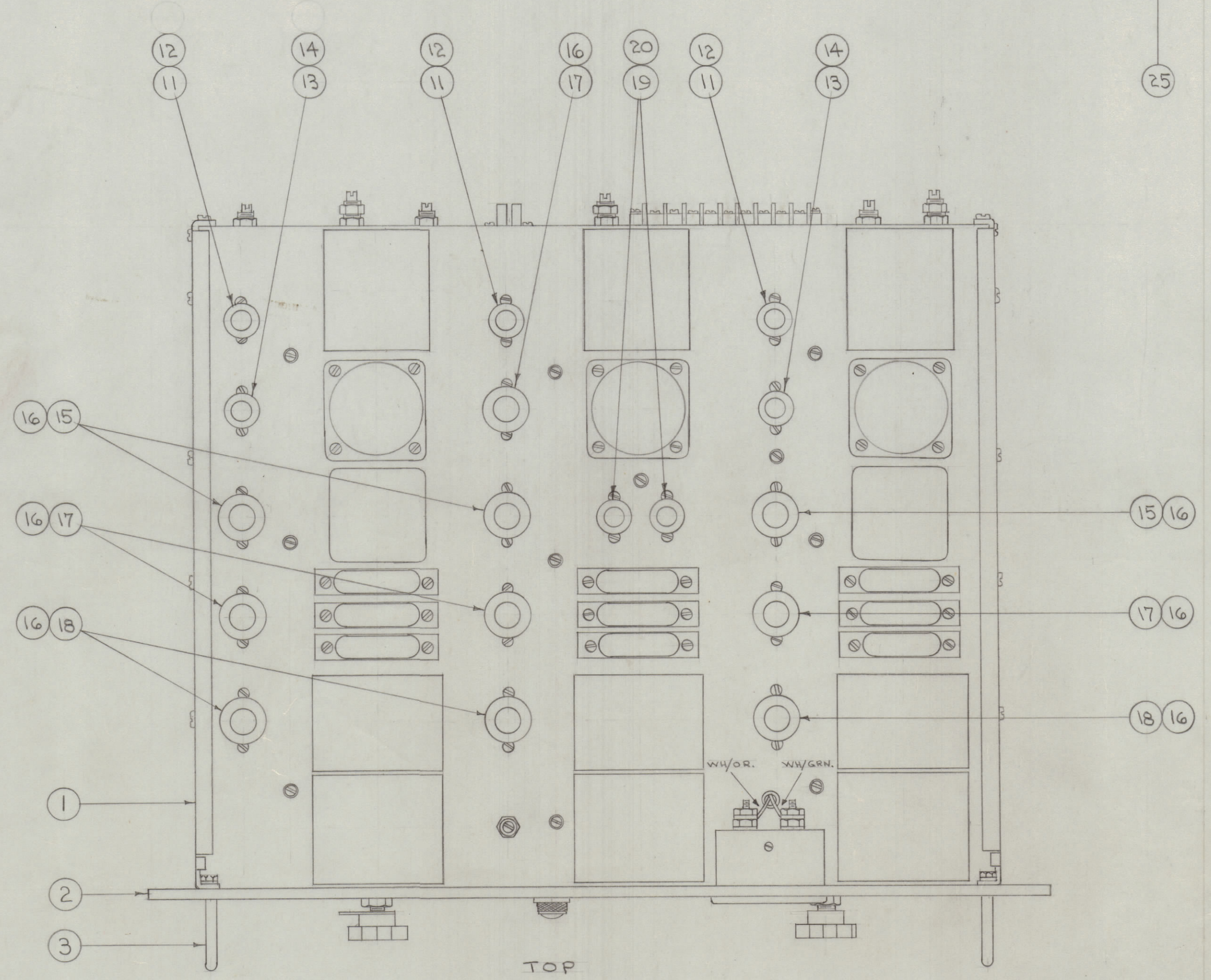
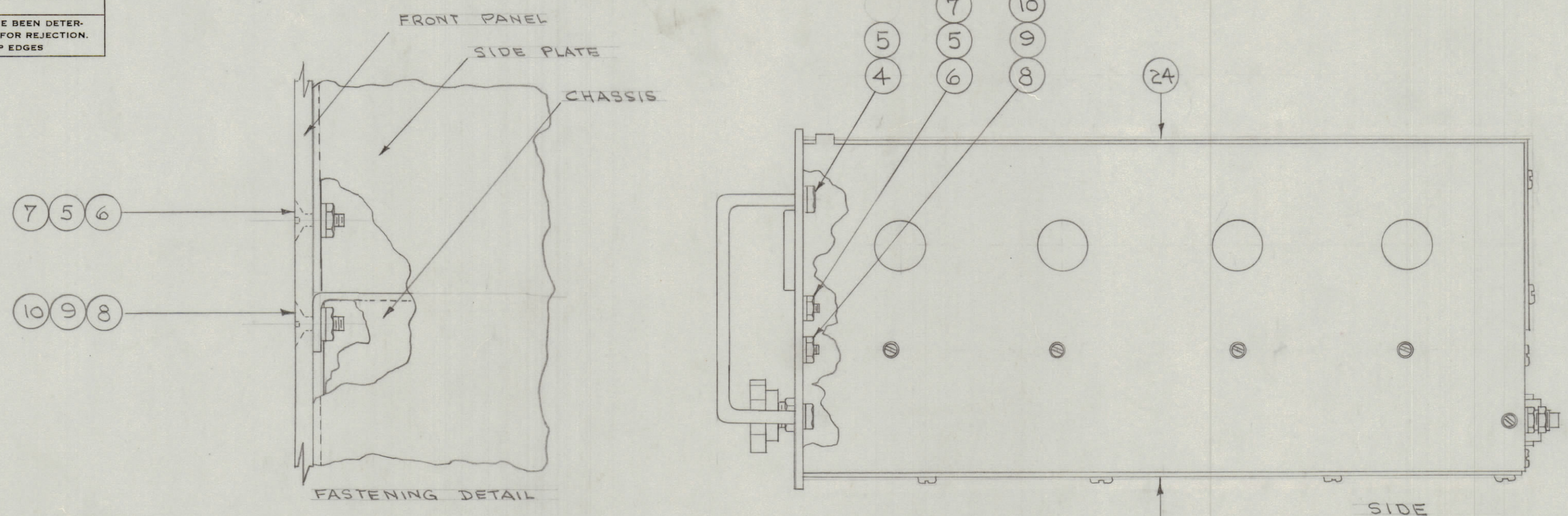


IF IT IS FOUND DESIRABLE TO CHANGE ANY TOLERANCE OR OTHER DETAIL SPECIFIED ON THIS DRAWING NOTIFY THE PURCHASER PROMPTLY.
 MAXIMUM ALLOWABLE TOLERANCES HAVE BEEN DETERMINED AND DEVIATIONS WILL BE CAUSE FOR REJECTION. REMOVE ALL BURRS AND SHARP EDGES



WIRING DETAIL OF R82 & S1

NOTICE TO PERSONS RECEIVING THIS DRAWING

THE TECHNICAL MATERIEL CORPORATION claims proprietary right in the material disclosed herein. This drawing is issued in confidence for engineering information only and may not be reproduced or used to manufacture anything shown hereon without permission from THE TECHNICAL MATERIEL CORPORATION to the user. This drawing is loaned for mutual assistance and is subject to recall at any time.

Property of:
 THE TECHNICAL MATERIEL CORPORATION
 MAMARONECK, NEW YORK

1	25	A-538	COVER ASSY., BTM.	
1	24	A-533	" " " " TOP	
X	23	BS-100	SOLDER, SOFT (CONNECTIONS)	
X	22	PX-104-1-.022	INSULATION, SLEEVING (BLK)	
X	21	WL-100-8	WIRE, BUSS BAR (24 G.)	
2	20	TS-102-U03	SHIELD, TUBE	
2	19	0 B 2	TUBE, ELECTRON	V16
3	18	12AT 7	" " "	V15, 6
4	17	12AU 7	" " "	V2, 7, 8, 12
10	16	TS-103-U02	SHIELD, TUBE	
3	15	12AX 7	TUBE, ELECTRON	V3, 8, 13
2	14	TS-102-U02	SHIELD, TUBE	
2	13	GCA	TUBE, ELECTRON	V4
3	12	TS-102-U01	SHIELD, TUBE	
3	11	6AL 5	TUBE, ELECTRON	V5, 10, 15
4	10	NTH0832BC10	NUT, HEX.	
4	9	LWS08MRC	WASHER, LOCK	
4	8	SCFS0832BCB	SCREW, MACHINE	
2	7	NTH1032BC12	NUT, HEX.	
2	6	SCFS1032BCB	SCREW, MACHINE	
6	5	LWS10MRC	WASHER, LOCK	
4	4	AN3-65A	BOLT, HEX HEAD	
2	3	HA-102-5	HANDLE	
1	2	A-567	FRONT PANEL ASSY.	
1	1	A-573	MAIN CHASSIS T.B. ASSY.	

REQ. ITEM	PART NO.	DESCRIPTION	SYMBOL
THE TECHNICAL MATERIEL CORP. MAMARONECK, NEW YORK			
FINAL ASSY.			
RSD-1			
CDD-10-22-53			
DRAWN		ELEC. DES. APP.	MECH. DES. APP.
HEAT TREAT SPEC.		CHECKED	FINAL APPROVAL
A-504			

MODEL	PROJECT NO.	ASSY. NO.	DATE
RSD-1	170		10-22-53
USED ON			

ISSUE ITEM	CHANGED FROM	DATE	CN. NO.	DRAFTS	CHECKER	ENG. APP.
1	ORIGINAL RELEASE	10/6/53				
TOLERANCES						
SCALE:						
DRILL, PUNCH, COMMERCIAL STOCK SIZES AND MANUFACTURERS TOLERANCES ARE NOT INCLUDED.						