

REQ. PER UNIT	USED ON			A-519	D
	MODEL	ASS'Y. NO.	DATE		
1 EA.	RSA-2				

TMC PART NO.	ITEM NO.	DESC.
A-519-1	MS-380-1	PLATE, SIDE, LEFT
A-519-2	MS-380-2	PLATE, SIDE, RIGHT

6	5	NTH0348BN6	NUT, HEX
6	4	LWS03MRN	LOCKWASHER, SPLIT
6	3	SCFP0348BN4	SCREW, MACHINE
3	2	FS-102-1	LOCK SPRING
1	1	See Chart	PLATE, SIDE

REQ.	ITEM	PART NO.	DESCRIPTION	SYMBOL									
			THE TECHNICAL MATERIEL CORP. MAMARONECK. NEW YORK										
			STOCK SIZE										
			PLATE ASSY, SIDE										
D													
SYM	DESCRIPTION	DATE	CH. NO.	DRAFTS	CHECKER	ENG. APP.	MATERIAL						
	RE-INSTATED & UPDATED	7/13/63	9581	16	1 P.	<i>[Signature]</i>							
UNLESS OTHERWISE SPECIFIED DIMENSIONS ARE IN INCHES AND INCLUDE CHEMICALLY APPLIED OR PLATED FINISHES		SCALE		TYPE & TEMPER		HEAT TREAT. SPEC.		DRAWN		CHECKED		FINAL APPROVAL	
DECIMALS .X ± .05 .XX ± .01 .XXX ± .005		FRACTIONS ± 1/64 ANGLES ± 0° 30'		FINISH & SPEC. NO.		ELEC. DES. APP.		MECH. DES. APP.		A-519		D	
TOLERANCES													

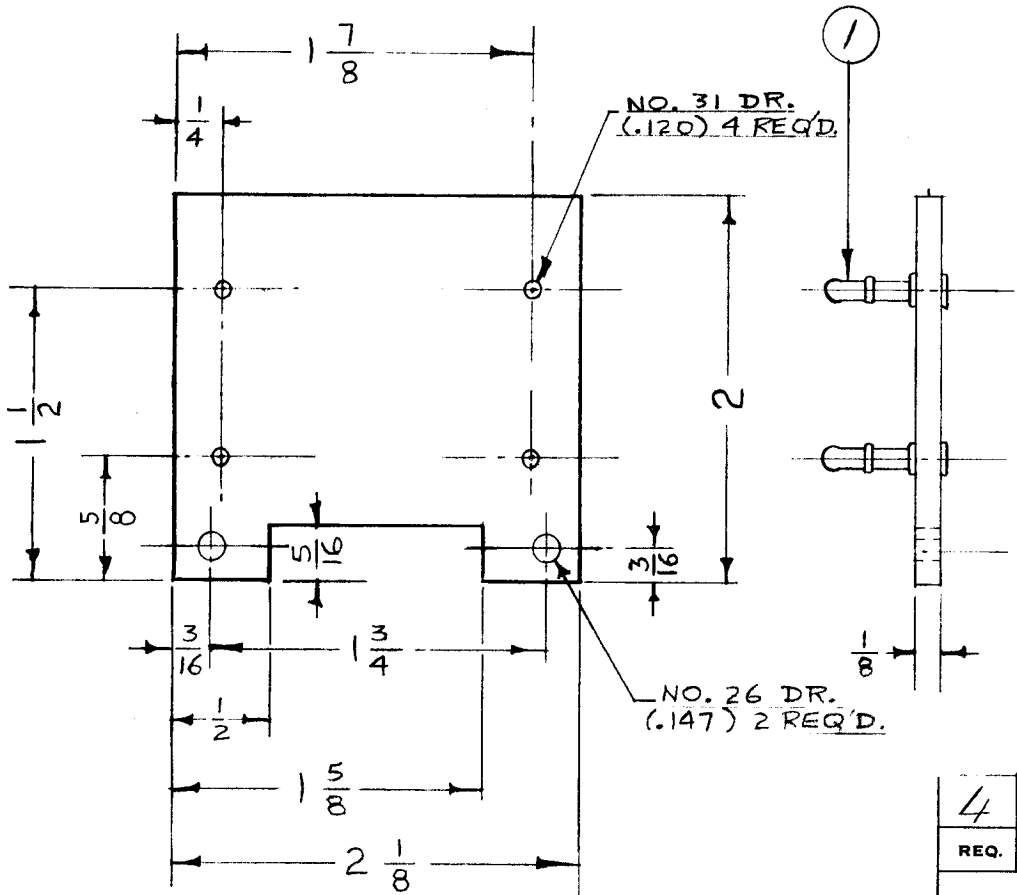
IF IT IS FOUND DESIRABLE TO CHANGE ANY TOLERANCE OR OTHER DETAIL SPECIFIED ON THIS DRAWING NOTIFY THE PURCHASER PROMPTLY.

MAXIMUM ALLOWABLE TOLERANCES HAVE BEEN DETERMINED AND DEVIATIONS WILL BE CAUSE FOR REJECTION. REMOVE ALL BURRS AND SHARP EDGES

A-522

A.

REQ PER UNIT	USED ON			
	MODEL	PROJECT NO.	ASS'Y. NO.	DATE
1	FD-117	170	A-751	10/1/54



4	1	TE-137-7	TERMINAL LUG	
REQ.	ITEM	PART NO.	DESCRIPTION	SYMBOL
		1/8	THE TECHNICAL MATERIEL CORP.	
		STOCK SIZE	MAMARONECK, NEW YORK	
		PHENOLIC	DISCRIMINATOR TERM.	
		MATERIAL	BOARD ASS'Y.	
		XXXXP		
		TYPE & TEMPER	9/4/53 46	A ₀ J ₀ J ₀
			DRAWN	ELEC. DES. APP.
			M.H.S.	W.S.C.
		HEAT TREAT. SPEC.	FINAL APPROVAL	
			A-522	
		FINISH & SPEC. NO.	A	

A	DX ITEM DELE.	5/27/77	19232	GE	(D)	QEB	
ISSUE	ITEM	CHANGED FROM	DATE	CN. NO.	DRAFTS	CHECKER	ENG. APP.

TOLERANCES SCALE FULL

ALL OTHERS DEC. DIM. ±
FRAC. DIM. ±
ANGULAR DIM. ±

DRILL, PUNCH, COMMERCIAL STOCK SIZES AND MANUFACTURERS TOLERANCES ARE NOT INCLUDED.

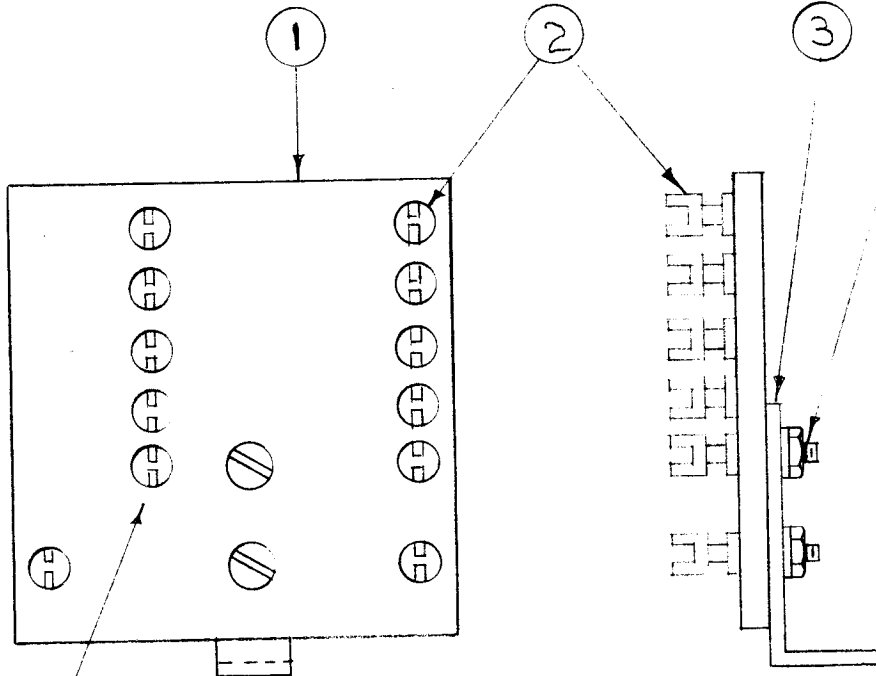
IF IT IS FOUND DESIRABLE TO CHANGE ANY TOLERANCE OR OTHER DETAIL SPECIFIED ON THIS DRAWING NOTIFY THE PURCHASER PROMPTLY.

MAXIMUM ALLOWABLE TOLERANCES HAVE BEEN DETERMINED AND DEVIATIONS WILL BE CAUSE FOR REJECTION. REMOVE ALL BURRS AND SHARP EDGES

A-553

USED ON

MODEL	PROJECT NO.	ASS'Y. NO.	DATE
RSC-1	170	A-554 A-555 A-556	9/30/53



REF. DWG. LD-163

REQ.	ITEM	PART NO.	DESCRIPTION	SYMBOL
2	6	NTH04408CG	NUT, HEX.	
2	5	LWS04MRC	LOCKWASHER, SPLIT	
2	4	SCFS04408CG	SCREW, MACHINE	
1	3	MS-405	BRACKET, T. B.	
12	2	TE-109-3	TERMINAL	
1	1	PX-179	TERMINAL BOARD.	

THE TECHNICAL MATERIEL CORP.
MAMARONECK, NEW YORK

TERMINAL BD. SUB ASSY.

RSC-1

C.D.D. 9-30-53

G.T.O

W.D.E

DRAWN

ELEC. DES. APP.

MECH. DES. APP.

W.D.E J.B

G.T.O

W.D.E

CHECKED

FINAL APPROVAL

A-553

ISSUE	ITEM	CHANGED FROM	DATE	CN. NO.	DRAFTS	CHECKER	ENG. APP.

TOLERANCES

SCALE

ALL OTHERS

DEC. DIM. ±
FRAC. DIM. ±
ANGULAR DIM. ±

DRILL, PUNCH, COMMERCIAL STOCK SIZES AND MANUFACTURERS TOLERANCES ARE NOT INCLUDED.

FINISH & SPEC. NO.

IF IT IS FOUND DESIRABLE TO CHANGE ANY TOLERANCE OR OTHER DETAIL SPECIFIED ON THIS DRAWING NOTIFY THE PURCHASER PROMPTLY.

A-557

MAXIMUM ALLOWABLE TOLERANCES HAVE BEEN DETERMINED AND DEVIATIONS WILL BE CAUSE FOR REJECTION. REMOVE ALL BURRS AND SHARP EDGES

USED ON

MODEL

PROJECT NO.

ASS'Y. NO.

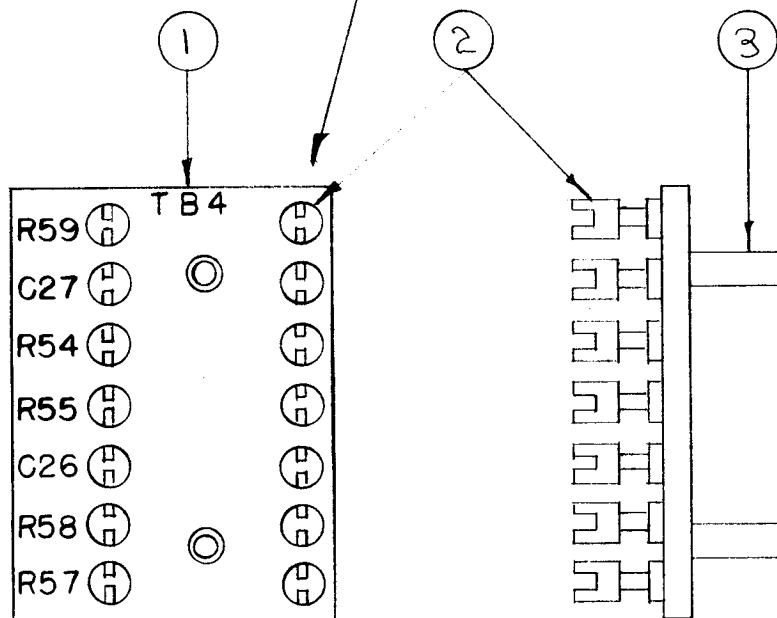
DATE

RSC-1

170

10-1-53

NOTE POSITION OF LUGS



MARKING PROCESS: AS PER TMC SPECIFICATION S-727

LETTERING: 1/8 HIGH BLACK, GOTHIC LOCATED AS SHOWN

REQ.	ITEM	PART NO.	DESCRIPTION	SYMBOL
2	3	TE-108-13	TERMINAL, STAND OFF	
14	2	TE-109-3	TERMINAL, TURRET	
1	1	PX-180	BOARD, TERMINAL	
//			THE TECHNICAL MATERIEL CORP. MAMARONECK. NEW YORK	
STOCK SIZE				
//			TERM. BD. SUB-ASSY.	
MATERIAL			RSC-1	
WEIGHT PER PC.				
TYPE & TEMPER			C.O.D. 10-1-53	
HEAT TREAT. SPEC.			G.T.O	
FINISH & SPEC. NO.			G.T.O	
			DRAWN ELEC. DES. APP. MECH. DES. APP.	
			CHECKED FINAL APPROVAL	
			A-557	

ISSUE	ITEM	CHANGED FROM	DATE	CN. NO.	DRAFTS	CHECKER	ENG. APP.

TOLERANCES		SCALE
ALL OTHERS	DEC. DIM. \pm FRAC. DIM. \pm ANGULAR DIM. \pm	DRILL, PUNCH, COMMERCIAL STOCK SIZES AND MANUFACTURERS TOLERANCES ARE NOT INCLUDED.

IF IT IS FOUND DESIRABLE TO CHANGE ANY TOLERANCE OR OTHER DETAIL SPECIFIED ON THIS DRAWING NOTIFY THE PURCHASER PROMPTLY.

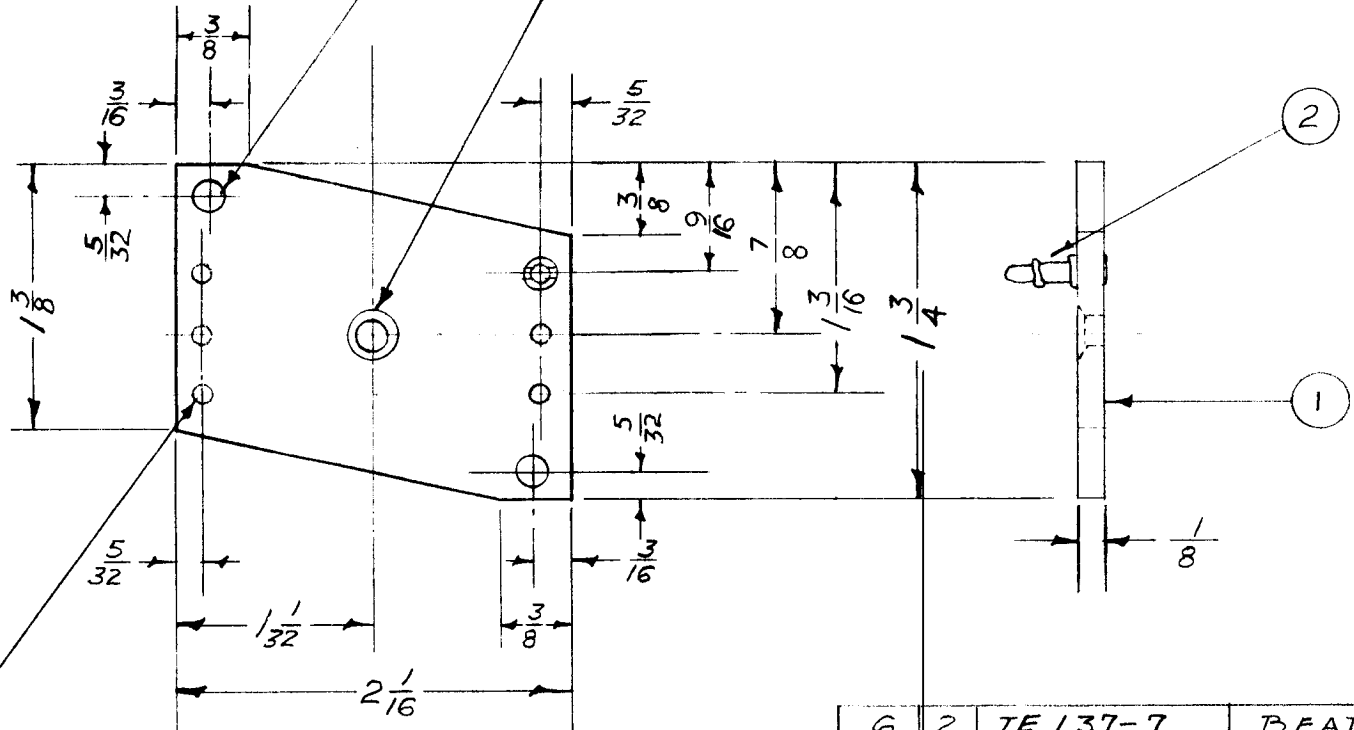
A-561 A

MAXIMUM ALLOWABLE TOLERANCES HAVE BEEN DETERMINED AND DEVIATIONS WILL BE CAUSE FOR REJECTION. REMOVE ALL BURRS AND SHARP EDGES

USED ON			
MODEL	PROJECT NO.	ASS'Y. NO.	DATE
RSC1(A,B,C,D,E)	170	A-540	10-8-53

1/64 (.171) D. 2 REQ'D.

DRILL & C'SINK FOR 6-32 (1 REQ'D.)



NO. 32 DRILL - 6 REQ'D.

6	2	TE 137-7	BEAD, TERMINAL	
1	1	PX-182	TERM. BOARD (NO DWG)	
REQ.	ITEM	PART NO.	DESCRIPTION	SYMBOL
		1/8	THE TECHNICAL MATERIEL CORP.	
		STOCK SIZE	MAMARONECK. NEW YORK	
		PHENOLIC	TERMINAL BOARD	
		MATERIAL	ASS'Y.	
		XXXXP	16 10-8-53	
		TYPE & TEMPER	G.T.O	WDC
			DRAWN	ELEC. DES. APP.
			88	MECH. DES. APP.
		HEAT TREAT. SPEC.	G.T.O	WDC
			CHECKED	FINAL APPROVAL
		FINISH & SPEC. NO.	A-561	A

ISSUE	ITEM	CHANGED FROM	DATE	CN. NO.	DRAFTS	CHECKER	ENG. APP.
A	1	ITEM 2 WAS TE-169-3	10/14/53	1	JALB	WDC	WDC

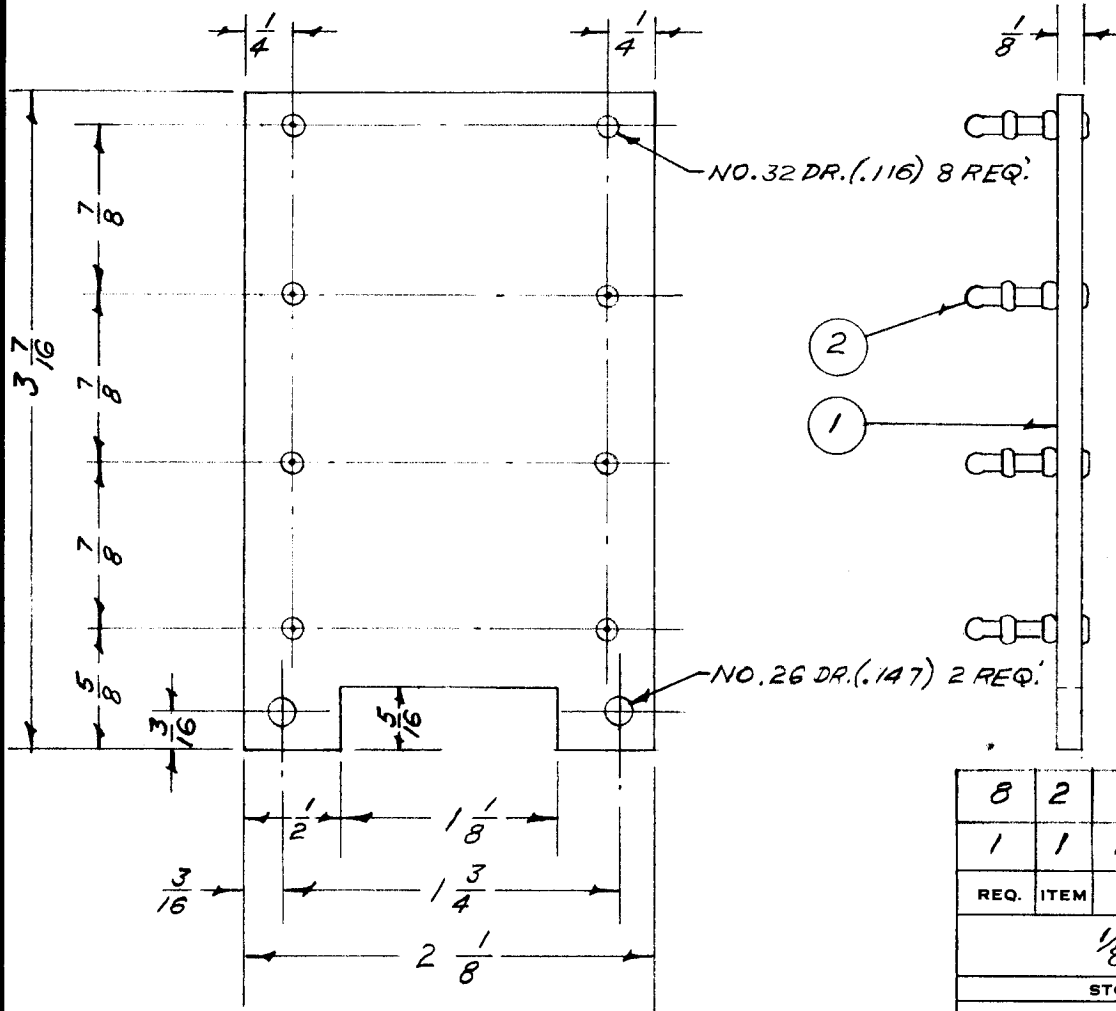
TOLERANCES		SCALE	
ALL OTHERS	DEC. DIM. ± FRAC. DIM. ± ANGULAR DIM. ±	DRILL, PUNCH, COMMERCIAL STOCK SIZES AND MANUFACTURERS TOLERANCES ARE NOT INCLUDED.	

IF IT IS FOUND DESIRABLE TO CHANGE ANY TOLERANCE OR OTHER DETAIL SPECIFIED ON THIS DRAWING NOTIFY THE PURCHASER PROMPTLY.

A-568

MAXIMUM ALLOWABLE TOLERANCES HAVE BEEN DETERMINED AND DEVIATIONS WILL BE CAUSE FOR REJECTION. REMOVE ALL BURRS AND SHARP EDGES

REQ. PER UNIT	USED ON			
	MODEL	PROJECT NO.	ASS'Y. NO.	DATE
1	FD-116	170	A-750	9-30-54



8	2	TE-137-7	TERMINAL, BEAD	
1	1	PX-131	TERMINAL BD. (NO DWG.)	
REQ.	ITEM	PART NO.	DESCRIPTION	SYMBOL
$\frac{1}{8}$ THK.			THE TECHNICAL MATERIEL CORP.	
STOCK SIZE			MAMARONECK. NEW YORK	
PHENOLIC		ff	TERMINAL BOARD,	
MATERIAL		WEIGHT PER PC.	DESCRIMINATOR	
XXXXP			16 10-15-53	Mott. So
TYPE & TEMPER			DRAWN	ELEC. DES. APP.
ff			Mott. So	MECH. DES. APP.
HEAT TREAT. SPEC.			CHECKED	FINAL APPROVAL
ff				
FINISH & SPEC. NO.				
				A-568

ISSUE ITEM CHANGED FROM DATE CN. NO. DRAFTS CHECKER ENG. APP.

TOLERANCES

SCALE FULL

ALL OTHERS
DEC. DIM. \pm
FRAC. DIM. \pm
ANGULAR DIM. \pm

DRILL, PUNCH, COMMERCIAL STOCK SIZES AND MANUFACTURERS TOLERANCES ARE NOT INCLUDED.

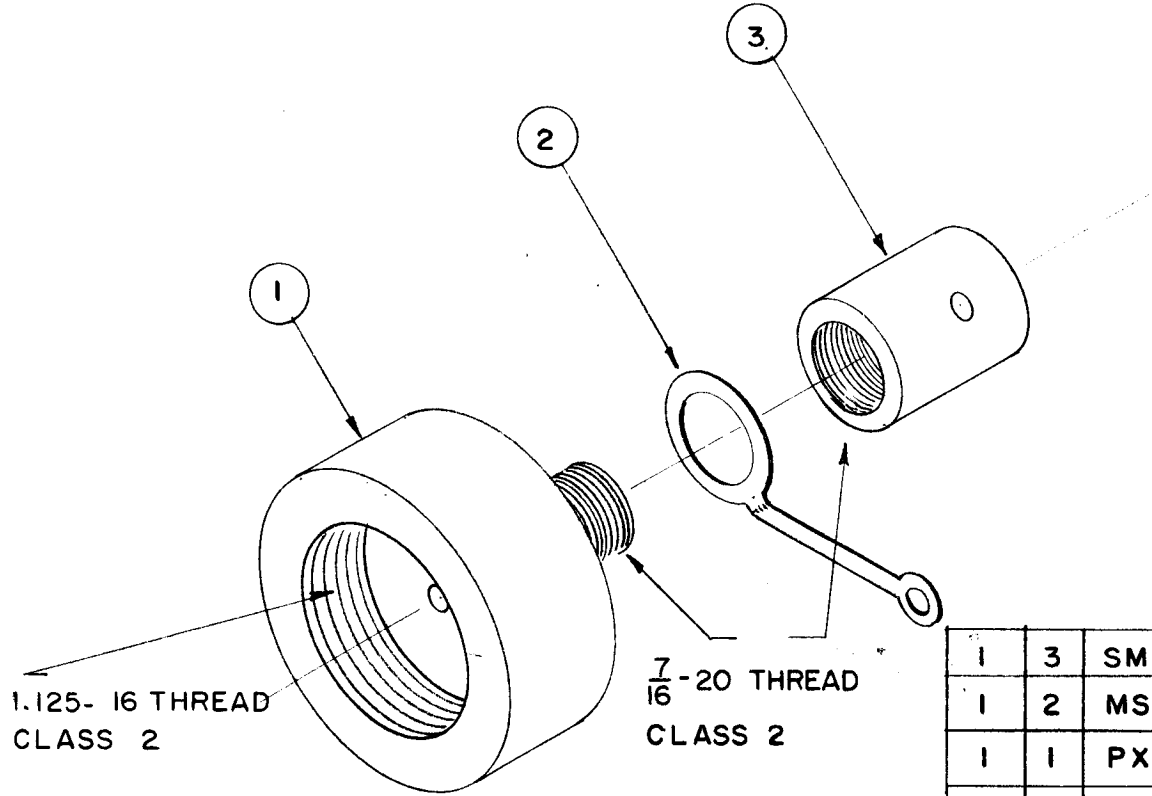
IF IT IS FOUND DESIRABLE TO CHANGE ANY TOLERANCE OR OTHER DETAIL SPECIFIED ON THIS DRAWING NOTIFY THE PURCHASER PROMPTLY.

A-575

MAXIMUM ALLOWABLE TOLERANCES HAVE BEEN DETERMINED AND DEVIATIONS WILL BE CAUSE FOR REJECTION. REMOVE ALL BURRS AND SHARP EDGES

USED ON

MODEL	PROJECT NO.	ASS'Y. NO.	DATE
ES 85 / U		A-113	10-23-53



REQ.	ITEM	PART NO.	DESCRIPTION	SYMBOL
1	3	SM-104	NUT, CAP	
1	2	MS-108	LUG	
1	1	PX-102	CAP	
			THE TECHNICAL MATERIEL CORP. MAMARONECK. NEW YORK	
STOCK SIZE			TEFLON CAP ASSEMBLY	
MATERIAL		WEIGHT PER PC.		
TYPE & TEMPER				
HEAT TREAT. SPEC.				
FINISH & SPEC. NO.				

ISSUE	ITEM	CHANGED FROM	DATE	CN. NO.	DRAFTS	CHECKER	ENG. APP.

TOLERANCES

SCALE FULL

ALL OTHERS
DEC. DIM. \pm
FRAC. DIM. \pm
ANGULAR DIM. \pm

DRILL, PUNCH, COMMERCIAL STOCK SIZES AND MANUFACTURERS TOLERANCES ARE NOT INCLUDED.

JAD 10-23-53
DRAWN
ELEC. DES. APP.
MECH. DES. APP.
C.S.D. 10-23-53
WDE

CHECKED

FINAL APPROVAL

A-575

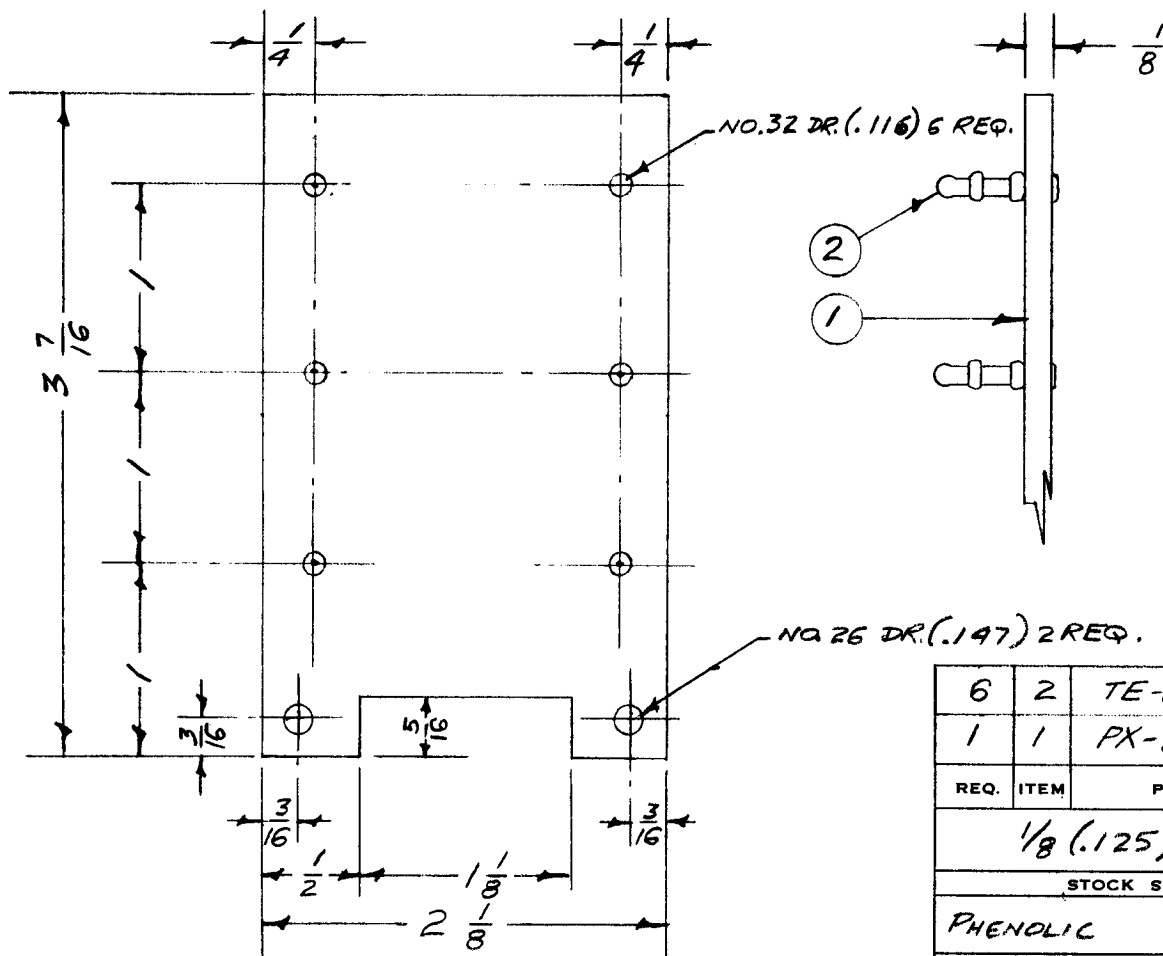
IF IT IS FOUND DESIRABLE TO CHANGE ANY TOLERANCE OR OTHER DETAIL SPECIFIED ON THIS DRAWING NOTIFY THE PURCHASER PROMPTLY.

A-578

MAXIMUM ALLOWABLE TOLERANCES HAVE BEEN DETERMINED AND DEVIATIONS WILL BE CAUSE FOR REJECTION. REMOVE ALL BURRS AND SHARP EDGES

USED ON

MODEL	PROJECT NO.	ASS'Y. NO.	DATE
	170	A-588	10-26-53



6	2	TE-137-7	LUG, TERMINAL, BEAD	
1	1	PX-111	TERM. BOARD (NO DWG.)	
REQ.	ITEM	PART NO.	DESCRIPTION	SYMBOL
1/8 (.125) THK.			THE TECHNICAL MATERIEL CORP.	
STOCK SIZE			MAMARONECK, NEW YORK	
PHENOLIC		—//—	BAND PASS TERMINAL BOARD	
MATERIAL		WEIGHT PER PC.	ASS'Y:	
XXXXP			16/10-26-53	
TYPE & TEMPER			DRAWN	ELEC. DES. APP. MECH. DES. APP.
HEAT TREAT. SPEC.			CHECKED	FINAL APPROVAL
FINISH & SPEC. NO.				A-578

ISSUE	ITEM	CHANGED FROM	DATE	CN. NO.	DRAFTS	CHECKER	ENG. APP.
-------	------	--------------	------	---------	--------	---------	-----------

TOLERANCES

SCALE FULL

ALL OTHERS
DEC. DIM. ±
FRAC. DIM. ± 1/64
ANGULAR DIM. ±

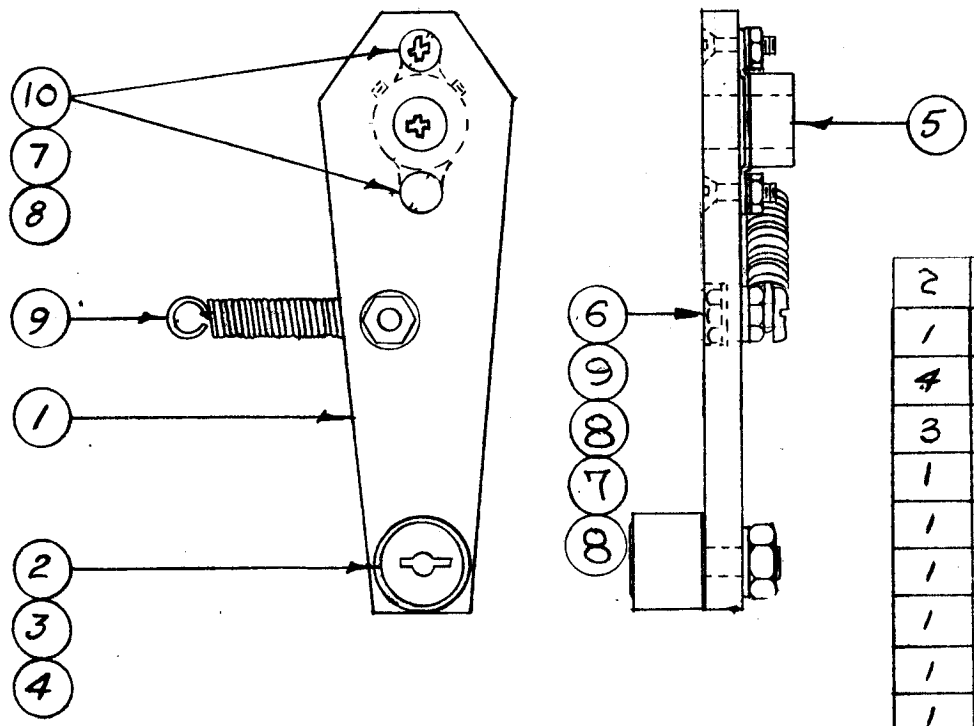
DRILL, PUNCH, COMMERCIAL STOCK SIZES AND MANUFACTURERS TOLERANCES ARE NOT INCLUDED.

IF IT IS FOUND DESIRABLE TO CHANGE ANY TOLERANCE OR OTHER DETAIL SPECIFIED ON THIS DRAWING NOTIFY THE PURCHASER PROMPTLY.

A-583 F

MAXIMUM ALLOWABLE TOLERANCES HAVE BEEN DETERMINED AND DEVIATIONS WILL BE CAUSE FOR REJECTION. REMOVE ALL BURRS AND SHARP EDGES

QUAN.	PER UNIT	USED ON			
		MODEL	PROJECT NO.	ASS'Y. NO.	DATE
2		VOX	101	A-585	11-10-53
1		PMO-1/2	285		8/17/54
1		VOX 1/2	291		1/27/55
1		RTF			2-2-56
1		RTF-2			11-10-58
1		AO-100		A-1742	
1		VOX, 3,4,5,6			6-21-62



REQ.	ITEM	PART NO.	DESCRIPTION	SYMBOL
2	10	SCFP0440BNG	SCREW, MACHINE	
1	9	SP-113	SPRING, CAM FOLLOWER	
4	8	NTH0440BNG	NUT, HEX.	
3	7	LW504MRN	LOCKWASHER, SPLIT	
1	6	SCB00440BNG	SCREW, MACH.	
1	5	MC-105-1	COUPLING	
1	4	NTH1032BN12	NUT, HEX.	
1	3	LWE10MRN	LOCKWASHER, INT.	
1	2	BB-107	BEARING, CAM FOLLOWER, MOD.	
1	1	PX-165	CAM FOLLOWER ARM	

ISSUE	ITEM	CHANGED FROM	DATE	CN. NO.	DRAFTS	CHECKER	ENG. APP.
		QTY ITEM 7 WAS 2	12/22/66	17567	WHO	JTS	
	1	BUILDUP REVISED	6/21/62	6470	DOM	FLO	
	D	ITEM 2 WAS BB-112	10/26/60	4	COB	Me	
	Q	SPRING POS. CHANGED	3/20/66	3	COB	Me	
	B	ITEM 2 WAS BB-107	7/1/55	2	COB	Me	
	A	ITEM 6 WAS SCFS	1/21/55	1	COB	Me	

//

STOCK SIZE

//

MATERIAL

//

WEIGHT PER PC.

//

TYPE & TEMPER

//

HEAT TREAT. SPEC.

//

FINISH & SPEC. NO.

THE TECHNICAL MATERIEL CORP.
MAMARONECK, NEW YORK

CAM FOLLOWER ARM SUB ASSY.
(OSC ASSY.)

16 11-10-53

DRAWN

ELEC. DES. APP.

MECH. DES. APP.

CHECKED

FINAL APPROVAL

A-583 F

TOLERANCES

SCALE FULL

ALL OTHERS

DEC. DIM. ±

FRAC. DIM. ±

ANGULAR DIM. ±

DRILL, PUNCH, COMMERCIAL STOCK SIZES AND MANUFACTURERS TOLERANCES ARE NOT INCLUDED.

IF IT IS FOUND DESIRABLE TO CHANGE ANY TOLERANCE OR OTHER DETAIL SPECIFIED ON THIS DRAWING NOTIFY THE PURCHASER PROMPTLY.

OBsolete

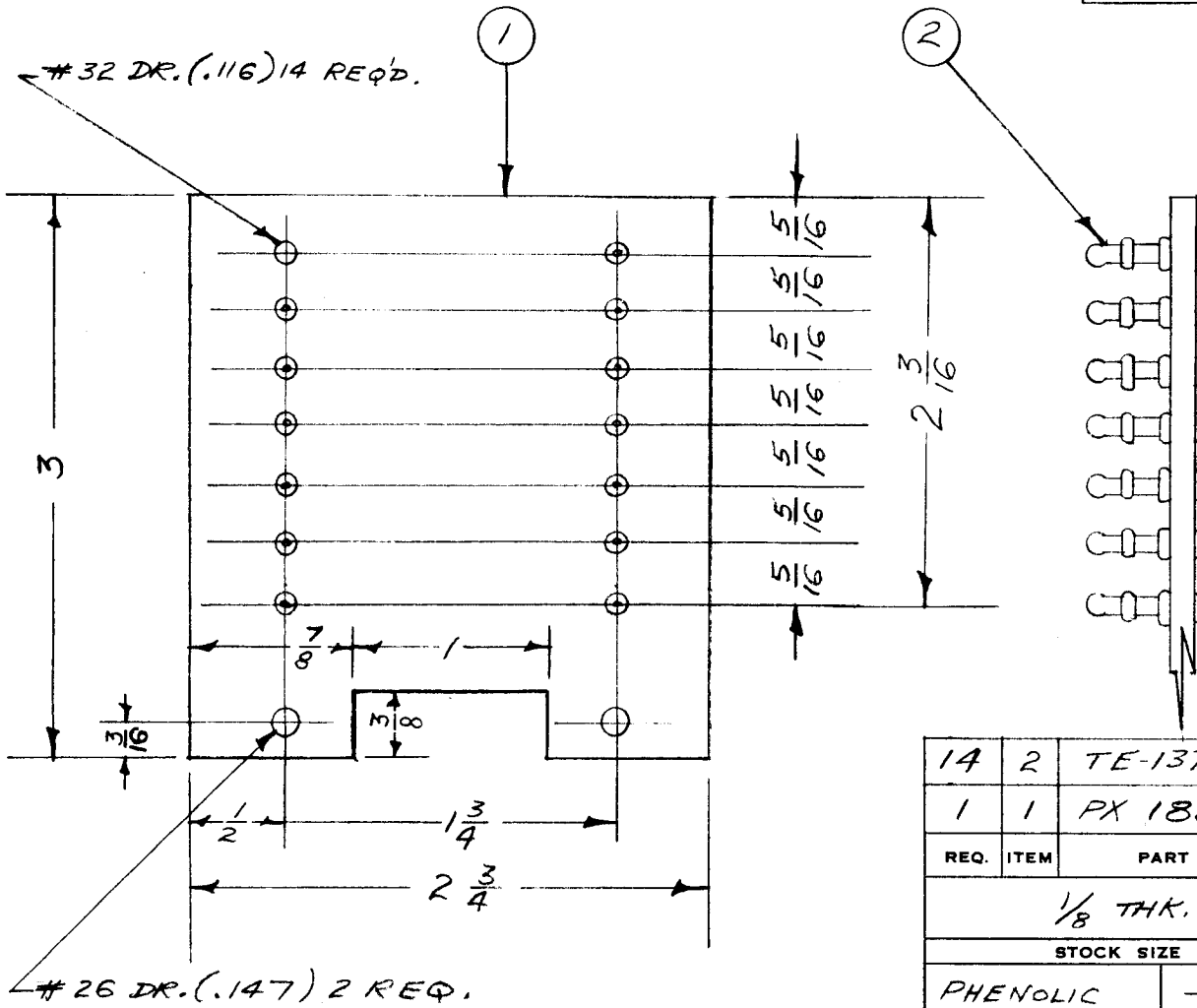
NOV 9 1954

A-589

Ø

MAXIMUM ALLOWABLE TOLERANCES HAVE BEEN DETERMINED AND DEVIATIONS WILL BE CAUSE FOR REJECTION. REMOVE ALL BURRS AND SHARP EDGES

USED ON				
AMT. PER UNIT	MODEL	PROJECT NO.	ASS'Y. NO.	DATE
1	FX-133	170	A-591	11-16-53



14	2	TE-137-7	TERMINAL, BEAD	
1	1	PX 183	TERMINAL BOARD (N.D.)	
REQ.	ITEM	PART NO.	DESCRIPTION	SYMBOL
1/8 THK.			THE TECHNICAL MATERIEL CORP.	
STOCK SIZE			MAMARONECK. NEW YORK	
PHENOLIC		ff	TERMINAL BD. ASS'Y.	
MATERIAL		WEIGHT PER PC.		
XXXXP			16 11-16-53	
TYPE & TEMPER			DRAWN	ELEC. DES. APP.
ff			MECH. DES. APP.	
HEAT TREAT. SPEC.			CHECKED	
ff			FINAL APPROVAL	
FINISH & SPEC. NO.			A-589	

Ø	ORIGINAL RELEASE FOR PRODUCTION CHANGED FROM			12/10/53	U				
ISSUE	ITEM	DATE	CN. NO.	DRAFTS	CHECKER	ENG. APP.			
TOLERANCES				SCALE FULL					
ALL OTHERS	DEC. DIM. ± FRAC. DIM. ± ANGULAR DIM. ±			DRILL, PUNCH, COMMERCIAL STOCK SIZES AND MANUFACTURERS TOLERANCES ARE NOT INCLUDED.					

IF IT IS FOUND DESIRABLE TO CHANGE ANY TOLERANCE OR OTHER DETAIL SPECIFIED ON THIS DRAWING NOTIFY THE PURCHASER PROMPTLY.

A-597

MAXIMUM ALLOWABLE TOLERANCES HAVE BEEN DETERMINED AND DEVIATIONS WILL BE CAUSE FOR REJECTION. REMOVE ALL BURRS AND SHARP EDGES

REQ. PER UNIT

USED ON

MODEL

PROJECT NO.

ASS'Y. NO.

DATE

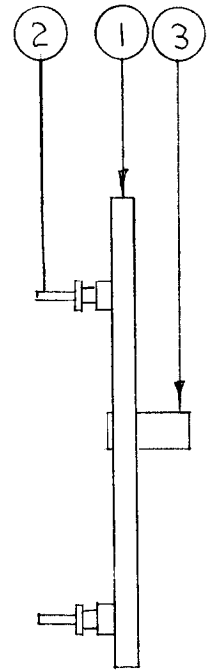
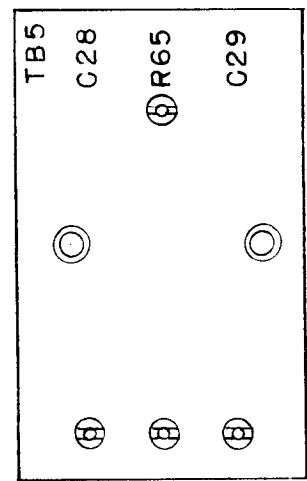
1

RSC-1

170

A-598

11-25-53



NOTE POSITION OF LUGS

2	3	TE-108-3	STAND OFF	
4	2	TE-109-3	TERMINAL, TURRET	
1	1	PX-184	TERM. BD. No. 5	
REQ.	ITEM	PART NO.	DESCRIPTION	SYMBOL
//			THE TECHNICAL MATERIEL CORP. MAMARONECK. NEW YORK	
STOCK SIZE				
//			TERM. BD. No. 5 SUB-ASSY.	
MATERIAL		WEIGHT PER PC.	RSC-1	
//			C.D.D. 11-25-53	
TYPE & TEMPER			G.T.O	
//			DRAWN	
HEAT TREAT. SPEC.			ELEC. DES. APP.	
//			MECH. DES. APP.	
FINISH & SPEC. NO.			G.T.O	
			CHECKED	
			FINAL APPROVAL	
			A-597	

ISSUE	ITEM	CHANGED FROM	DATE	CN. NO.	DRAFTS	CHECKER	ENG. APP.
TOLERANCES			SCALE //				
ALL OTHERS			DRILL, PUNCH, COMMERCIAL STOCK SIZES AND MANUFACTURERS TOLERANCES ARE NOT INCLUDED.				
DEC. DIM. ±							
FRAC. DIM. ±							
ANGULAR DIM. ±							