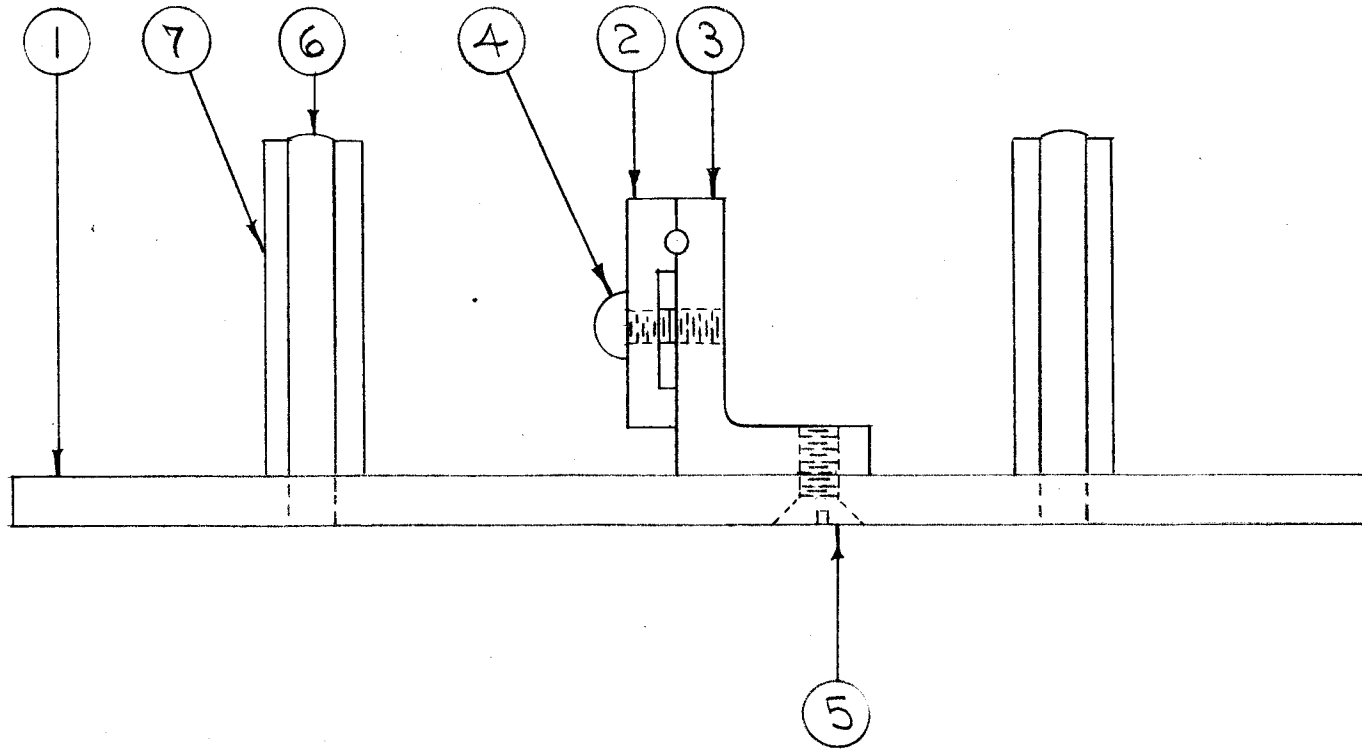
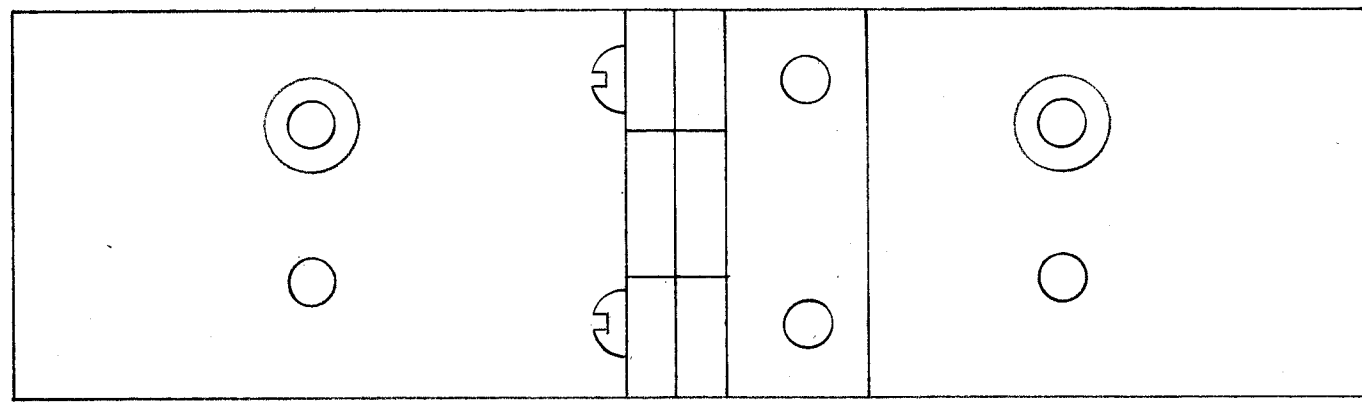


IF IT IS FOUND DESIRABLE TO CHANGE ANY TOLERANCE OR OTHER DETAIL SPECIFIED ON THIS DRAWING NOTIFY THE PURCHASER PROMPTLY.

MAXIMUM ALLOWABLE TOLERANCES HAVE BEEN DETERMINED AND DEVIATIONS WILL BE CAUSE FOR REJECTION. REMOVE ALL BURRS AND SHARP EDGES

A-500



2	7	PX-231	ROLLER, SPLICING JIG	
4	6	PM-282	POST, SPLICING JIG	
2	5	SCFS 1224BC8	SCREW, MACHINE	
2	4	SCRS 1224BC8	SCREW, MACHINE	
1	3	MS-520	CLAMP, STATIONARY	
1	2	MS-521	CLAMP, MOVEABLE	
1	1	MS-519	BASE, SPLICE HOLDER	

REQ.	ITEM	PART NO.	DESCRIPTION	SYMBOL
#			THE TECHNICAL MATERIEL CORP. MAMARONECK. NEW YORK	
STOCK SIZE				
#		#	SPLICE HOLDER JIG ASSY.	
MATERIAL		WEIGHT PER PC.		
#		#		
TYPE & TEMPER		C.D.D. 4-26-54		
#		DRAWN	ELEC. DES. APP.	MECH. DES. APP.
HEAT TREAT. SPEC.		FAID		
#		CHECKED	FINAL APPROVAL	
FINISH & SPEC. NO.		A-500		

ISSUE	ITEM	CHANGED FROM	DATE	CN. NO.	DRAFTS	CHECKER	ENG. APP.
TOLERANCES		SCALE: #					
ALL OTHERS	DEC. DIM. ± FRAC. DIM. ± ANGULAR DIM. ±	DRILL, PUNCH, COMMERCIAL STOCK SIZES AND MANUFACTURERS TOLERANCES ARE NOT INCLUDED.					

1	KS-85-X	J-227		A-26-52
RE PER UNIT	MODEL	PROJECT NO.	ASS'Y. NO.	DATE
USED ON				