

5

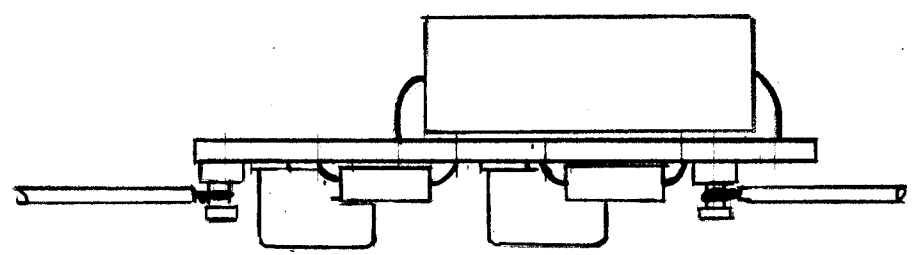
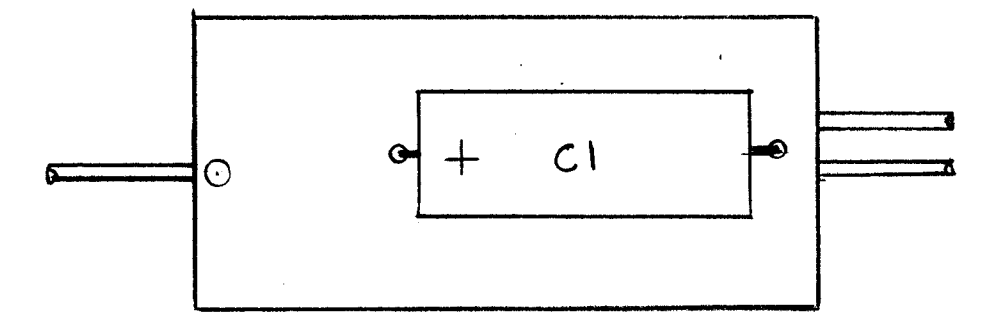
4

3

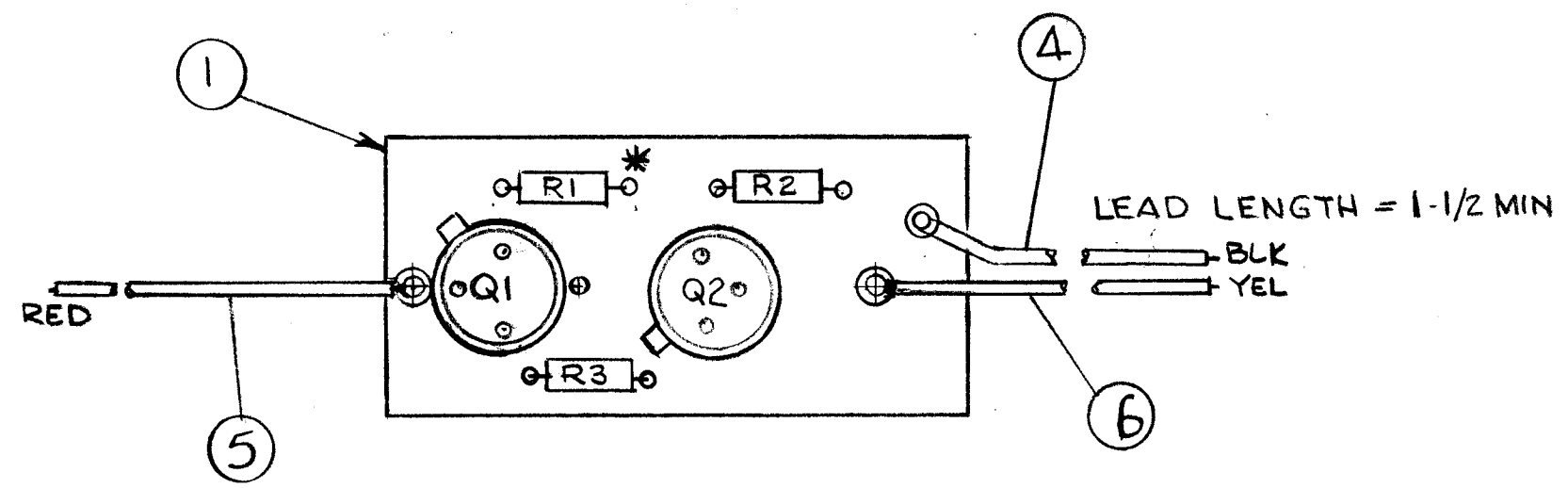
2

1

REVISIONS						
E.M.N. NO.	DRAFT	CHKD	ZONE	LTR	DESCRIPTION	DATE
	DV			Ø	ORIGINAL RELEASE FOR PRODUCTION	3-18-74
21994	<del>SD</del>			A	TERM for BLK(GND) Added	1-11-83



\* R1 VALUE DETERMINED ON NW183 DRAWING



REQ'D	ITEM	PART NUMBER	DESCRIPTION	SYM.
X	6	PX100-4-022	SLEEVING	
X	5	PX100-2-022	SLEEVING	
X	4	PX100-0-022	SLEEVING	
X	3	BS100	SOLDER TINNED ALLOY	
3"	2	WL100-6-3	WIRE, BUS-BAR, FINNED	
1	1	PC 709	PRINTED CIRCUIT BD	

LIST OF MATERIAL

1	PALA 10K	NW183
1	TAA-1K	NW183
QTY / UNIT	MODEL USED ON	ASS'Y NO.
APPLICATION		
	CODE	

UNLESS OTHERWISE SPECIFIED DIMENSIONS ARE IN INCHES AND INCLUDE CHEMICALLY APPLIED OR PLATED FINISHES	FINAL APPROVAL <i>[Signature]</i>	DATE 3-14-74
DECIMALS .X ± .05 .XX ± .01 .XXX ± .005	MECH. DES. <i>[Signature]</i>	DATE 3-14-74
FRACTIONS 1/64 ANGLES 0°-30'	ELECT. DES. <i>[Signature]</i>	DATE 3-14-74
MATERIAL	CHECKED <i>[Signature]</i>	DATE 3-6-74
FINISH	DRAWN <i>[Signature]</i>	DATE 3-6-74

THE TECHNICAL MATERIEL CORP. MAMARONECK, NEW YORK			
ASSY PRINTED CIRCUIT BD			
SIZE B	CODE IDENT. NO. 82679	DWG NO. A4986	ISSUE A
SCALE 2:1		SHEET OF	

**NOTICE TO PERSONS RECEIVING THIS DRAWING**  
 THE TECHNICAL MATERIEL CORPORATION claims proprietary right in the material disclosed hereon. This drawing is issued in confidence for engineering information only and may not be reproduced or used to manufacture anything shown hereon without permission from THE TECHNICAL MATERIEL CORPORATION to the user. This drawing is loaned for mutual assistance and is subject to recall at any time.

5

4

3

2

1