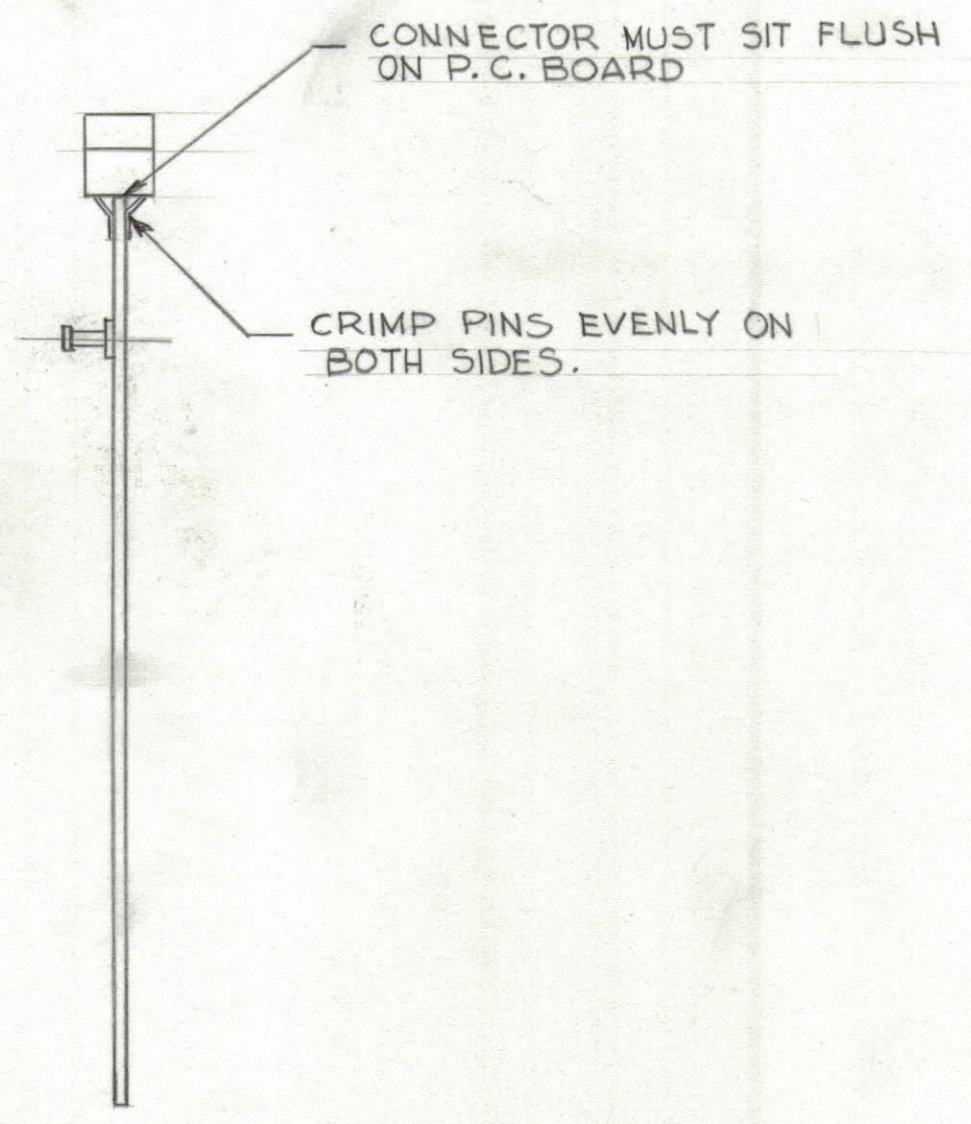
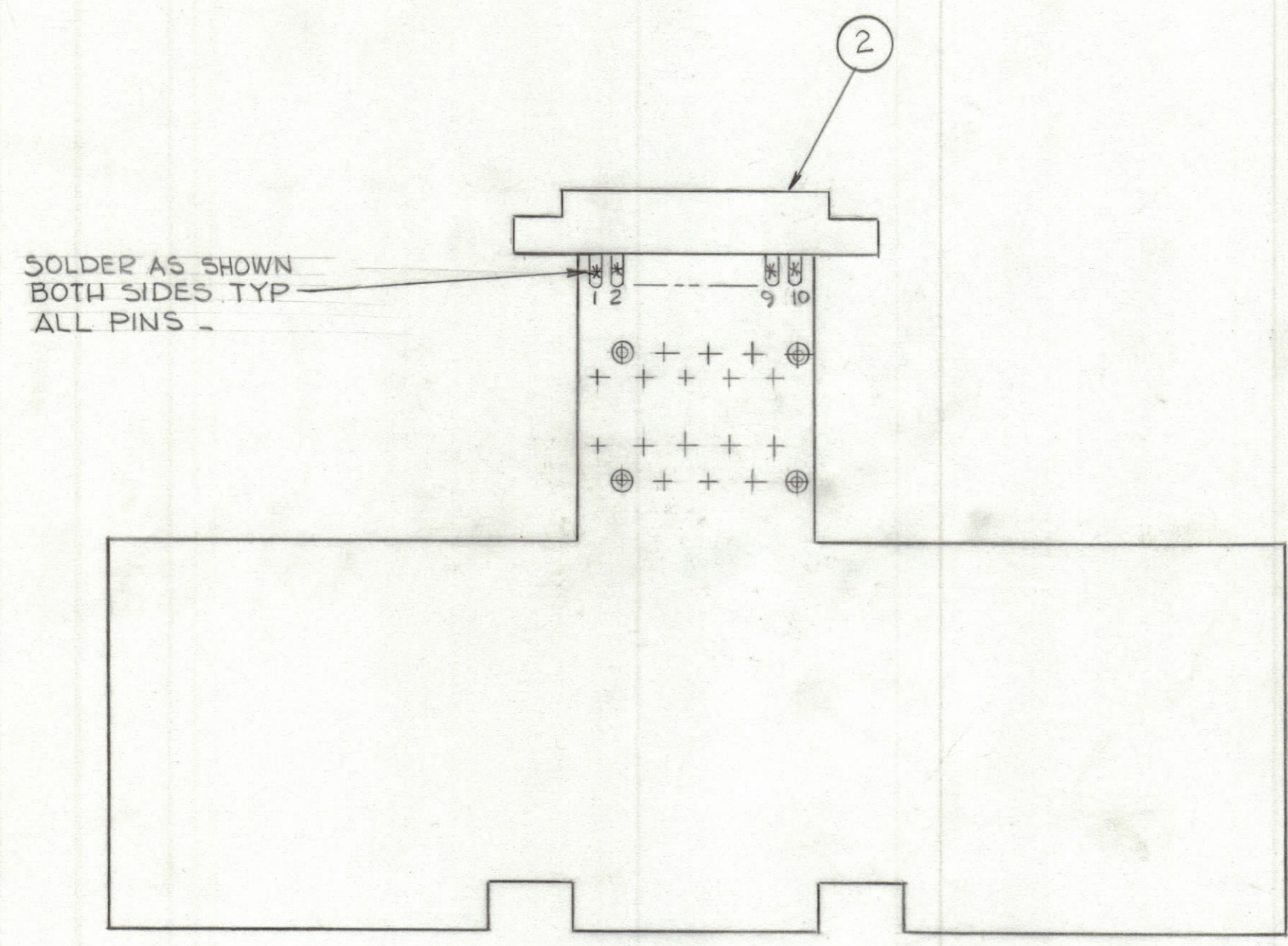


REVISIONS						
ZONE	LTR	DESCRIPTION	DATE	E.M.N.NO	DRAFT	CHKD APPD



QTY. REQ.	ITEM	PART NO.	DESCRIPTION	SYMBOL
X	3	BS 100	SOLDER TIN ALLOY	
1	2	JJ319- 10 DFE	CONNECTOR, RECEPTACLE	
1	1	PC 708	PRINTED CIRCUIT BOARD	

LIST OF MATERIAL

1	BMA 515	GPR 110
QTY / UNIT	MODEL USED ON	ASS'Y NO.
APPLICATION		
CODE		

UNLESS OTHERWISE SPECIFIED DIMENSIONS ARE IN INCHES AND INCLUDE CHEMICALLY APPLIED OR PLATED FINISHES

TOLERANCES ON

DECIMALS	FRACTIONS
.X ± .05	± 1/64
.XX ± .01	ANGLES
.XXX ± .005	± 0° -30'

MATERIAL

FINISH

FINAL APPROVAL	DATE
MECH. DES.	DATE
ELECT. DES.	DATE
CHECKED	DATE
DRAWN	DATE
<i>G. de L...</i>	6-12-74

**THE TECHNICAL MATERIEL CORP.**  
MAMARONECK, NEW YORK

ASS'Y PRINTED CIRCUIT BOARD  
TEST CARD

SIZE	CODE IDENT.NO.	DWG NO.	ISSUE
C	82679	A 4984	Ø
SCALE 1:1			SHEET OF

**NOTICE TO PERSONS RECEIVING THIS DRAWING**

THE TECHNICAL MATERIEL CORPORATION claims proprietary right in the material disclosed hereon. This drawing is issued in confidence for engineering information only and may not be reproduced or used to manufacture anything shown hereon without permission from THE TECHNICAL MATERIEL CORPORATION to the user. This drawing is loaned for mutual assistance and is subject to recall at any time.