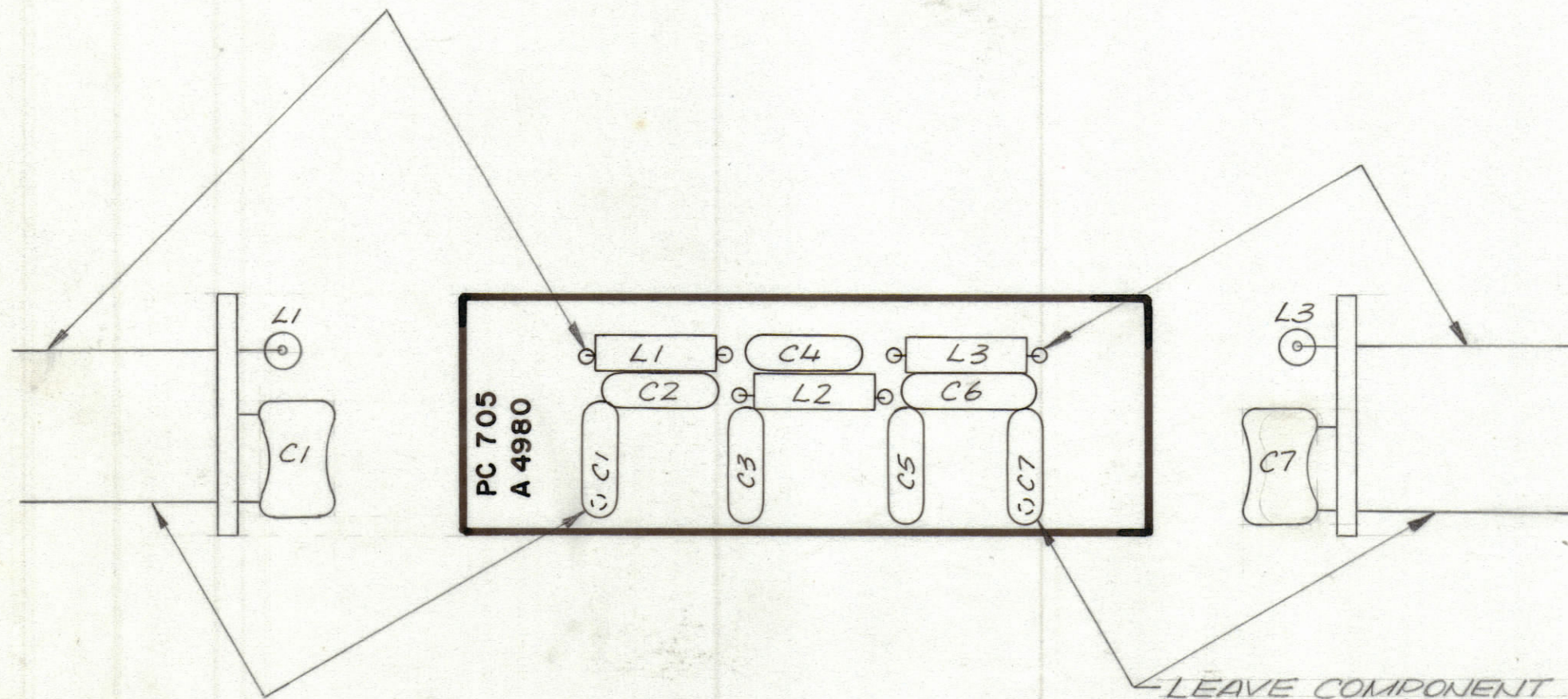


ENGINEERING SKETCH

NOT FOR PRODUCTION

REVISIONS						
ZONE	LTR	DESCRIPTION	DATE	E.M.N.NO	DRAFT	CHKD APPD



LEAVE COMPONENT LEADS INTACT  
4 PLACES AS SHOWN FOR MTG  
ON A4954.

ASSEMBLY NOTES

1. TO MOUNT COMPONENTS INSERT LEADS THROUGH HOLES.
2. CAUTION, WHEN APPLYING HEAT & SOLDER TO LEAD & FOIL.
3. CLEAN & INSPECT AS PER SPEC S676.
4. FOR ELECTRICAL COMPONENT PART NUMBERS REFER TO NPL A 4980
5. USE SYMBOL NUMBERS FOR ASSY. REF.

QTY. REQ.	ITEM	PART NO.	DESCRIPTION	SYMBOL
X	2	BS 100	SOLDER TIN ALLOY	
1	1	PC 705	PRINTED CIRCUIT BOARD	

LIST OF MATERIAL

UNLESS OTHERWISE SPECIFIED  
DIMENSIONS ARE IN INCHES  
AND INCLUDE CHEMICALLY APPLIED  
OR PLATED FINISHES

TOLERANCES ON	
DECIMALS	FRACTIONS
.X ± .05	± 1/64
.XX ± .01	ANGLES
.XXX ± .005	± 0° -30'

FINAL APPROVAL	DATE
MECH. DES.	DATE
ELECT. DES.	DATE
CHECKED	DATE
DRAWN	DATE
QE	1/17/73

**THE TECHNICAL MATERIEL CORP.**  
MAMARONECK, NEW YORK

ASSY. PRINTED CIRCUIT BD.  
MULTIPLIER BANDPASS FILTER

QTY / UNIT	MODEL USED ON	ASSY NO.
2	A4954(BMASIS)	
APPLICATION		
	CODE	
NOTICE TO PERSONS RECEIVING THIS DRAWING		
THE TECHNICAL MATERIEL CORPORATION claims proprietary right in the material disclosed hereon. This drawing is issued in confidence for engineering information only and may not be reproduced or used to manufacture anything shown hereon without permission from THE TECHNICAL MATERIEL CORPORATION to the user. This drawing is loaned for mutual assistance and is subject to recall at any time.		

MATERIAL	FINISH

SIZE	CODE IDENT.NO.	DWG NO.	ISSUE
C	82679	A 4980	
SCALE 2:1		SHEET	OF