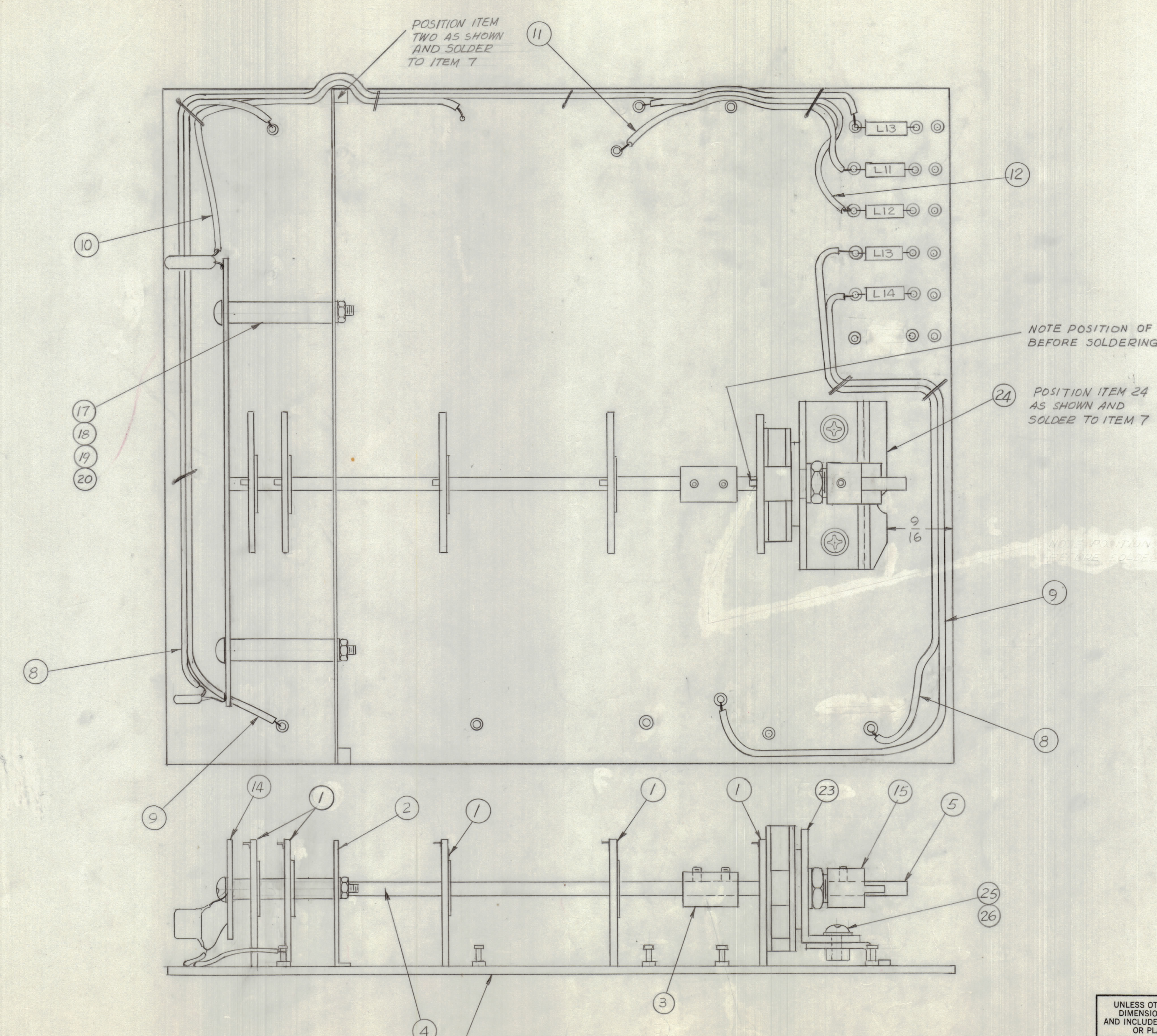


REVISIONS							
E.M.N.O	DRAFT	CHKD	ZONE	LTR	DESCRIPTION	DATE	APPROVED
	EDL			XI	SHEET ONE REDRAWN & REVISED	6-1-76	



QTY.	ITEM	PART NO.	DESCRIPTION	SYMBOL
2	26	LW104MRN	LOCK WASHER	
2	25	SCBP04408N3	SCREW, MACHINE	
1	24	MS 6541	BRACKET, DETENT	
1	23	MS 6560	BRACKET, DETENT	
X	22	MWC 22(8)U	WIRE-ELEC.	
X	21	WI 100-7	BUSS WIRE	
2	20	LWE04MRN	LOCK WASHER	
2	19	NTH0440BN6	NUT, HEX.	
2	18	SCBP0440BN20	SCREW, MACHINE	
2	17	TE 117-31	SPACER	
X	16	RG 188 1U	COAXIAL CABLE	
1	15	PM 1579	SHAFT, COUPLING	
1	14	A4999(PC77)	ASSY PC BOARD	
X	13	MWC 26(9)U	WIRE ELEC	
X	12	MWC 26(7)U	WIRE ELEC	
X	11	MWC 26(3)U	WIRE ELEC	
X	10	MWC 26(2)U	WIRE ELEC	
X	9	MWC 26(6)U	WIRE ELEC	
X	8	MWC 26(0)U	WIRE ELEC	
1	7	P0702	PRINTED CIRCUIT BD	
X	6	BS100	SOLDER TIN ALLOY	
1	5	DT110	SWITCH, DETENT	
1	4	PM 1569	SHAFT, SWITCH	
1	3	MC 126-	COUPLING SHAFT	
1	2	MS 6511-4	SHIELD RF	
4	1	WS145	WAFER SWITCH	

LIST OF MATERIAL				
QTY. REQ.	ITEM	PART NO.	DESCRIPTION	SYMBOL
FINAL APPROVAL _____ DATE _____				
MECH. DES. _____ DATE _____				
ELECT. DES. _____ DATE _____				
CHECKED _____ DATE _____				
DRAWN G.D.L. DATE 6-1-76				
MATERIAL			SIZE	CODE IDENT NO. DWG NO.
FINISH			D	82679 A4977
			SCALE 2-1	ISSUE XI
			SHEET 1 OF 2	

1	GPR-110	
QTY / UNIT	MODEL USED ON	ASS'Y NO.
APPLICATION		
CODE		
<small>NOTICE TO PERSONS RECEIVING THIS DRAWING</small> <small>THE TECHNICAL MATERIEL CORPORATION claims proprietary right in the material disclosed hereon. This drawing is issued in confidence for engineering information only and may not be reproduced or used to manufacture anything shown hereon without permission from THE TECHNICAL MATERIEL CORPORATION to the user. This drawing is loaned for mutual assistance and is subject to recall at any time.</small>		

UNLESS OTHERWISE SPECIFIED DIMENSIONS ARE IN INCHES AND INCLUDE CHEMICALLY APPLIED OR PLATED FINISHES

TOLERANCES ON
 DECIMALS ± .05
 FRACTIONS ± 1/64
 ANGLES ± 0° -30'

NOTE: COMPONENTS NOT SHOWN IN THIS VIEW SEE SHEET 2