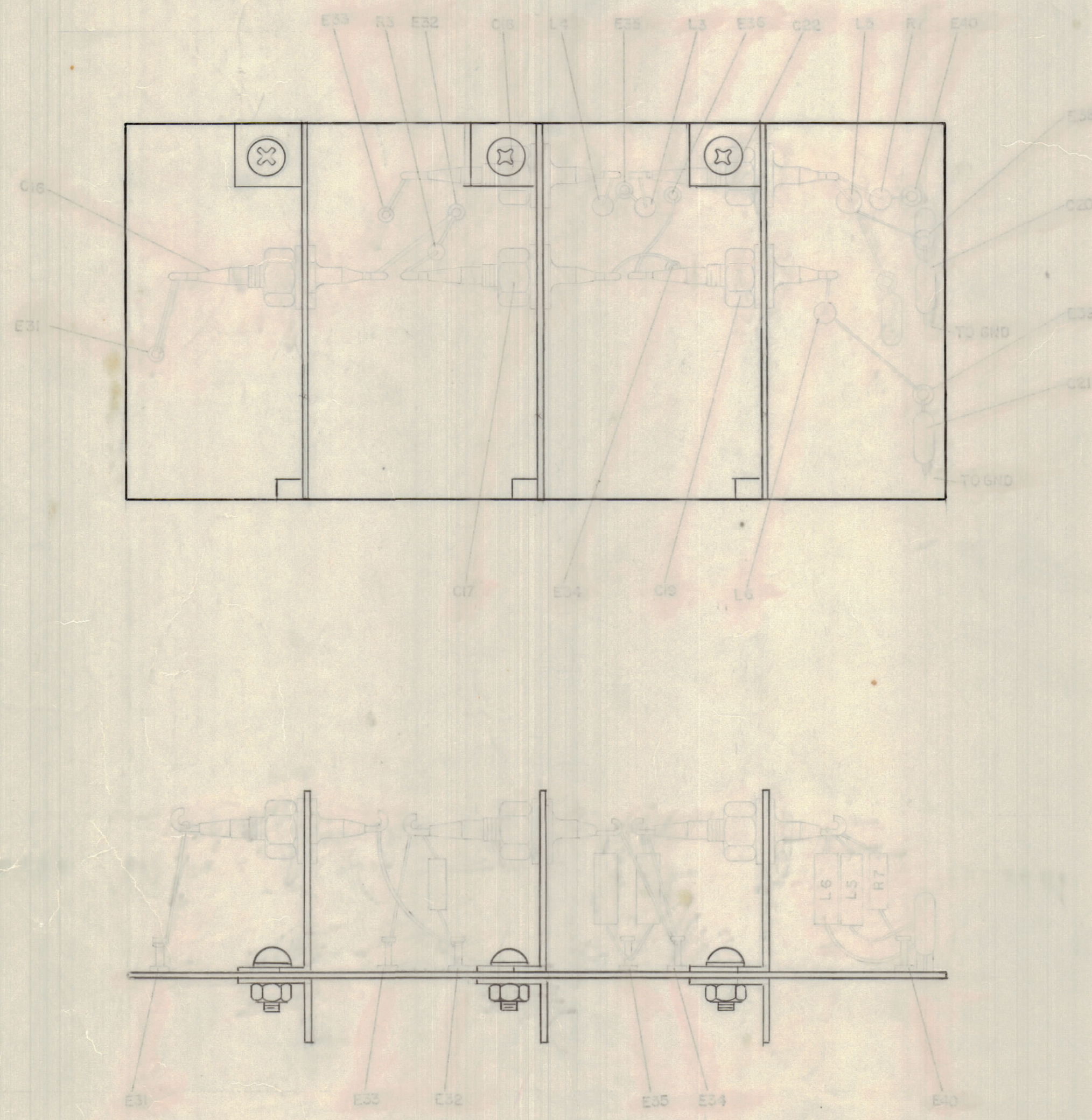


- ASSEMBLY NOTES**
1. TO MOUNT COMPONENTS INSERT LEADS THROUGH HOLES.
 2. CAUTION, WHEN APPLYING HEAT & SOLDER TO LEAD & FOIL.
 3. CLEAN & INSPECT AS PER SPEC S676.
 4. FOR ELECTRICAL COMPONENT PART NUMBERS REFER TO NPL A4973
 5. USE SYMBOL NUMBERS FOR ASSY. REF.



SHIELD ASSEMBLY (REF Z306)

X	2	BS 100	SOLDER TIN ALLOY	
1	1	PC 698	ASSY. PRINTED CIRCUIT BD.	
QTY. REQ.	ITEM	PART NO.	DESCRIPTION	SYMBOL
F.B. LIST OF MATERIAL				

FINAL APPROVAL	DATE
MECH. DES.	DATE
ELECT. DES.	DATE
CHECKED	DATE
DRAWN	DATE

TOLERANCES ON	
DECIMALS	FRACTIONS
X ± .05	± 1/64
.XX ± .01	ANGLES ± 0° -30'
.XXX ± .005	

QTY / UNIT	MODEL USED ON	ASS'Y NO.
APPLICATION		
CODE		
MATERIAL		
FINISH		

THE TECHNICAL MATERIEL CORP. MAMARONECK, NEW YORK			
ASSY. PRINTED CIRCUIT BD. HF IF			
SIZE	CODE IDENT NO.	DWG NO.	ISSUE
D	82679	A4973	X1
SCALE 2:1		SHEET OF	

NOTICE TO PERSONS RECEIVING THIS DRAWING
 THE TECHNICAL MATERIEL CORPORATION claims proprietary right in the material disclosed hereon. This drawing is issued in confidence for engineering information only and may not be reproduced or used to manufacture anything shown hereon without permission from THE TECHNICAL MATERIEL CORPORATION to the user. This drawing is loaned for mutual assistance and is subject to recall at any time.