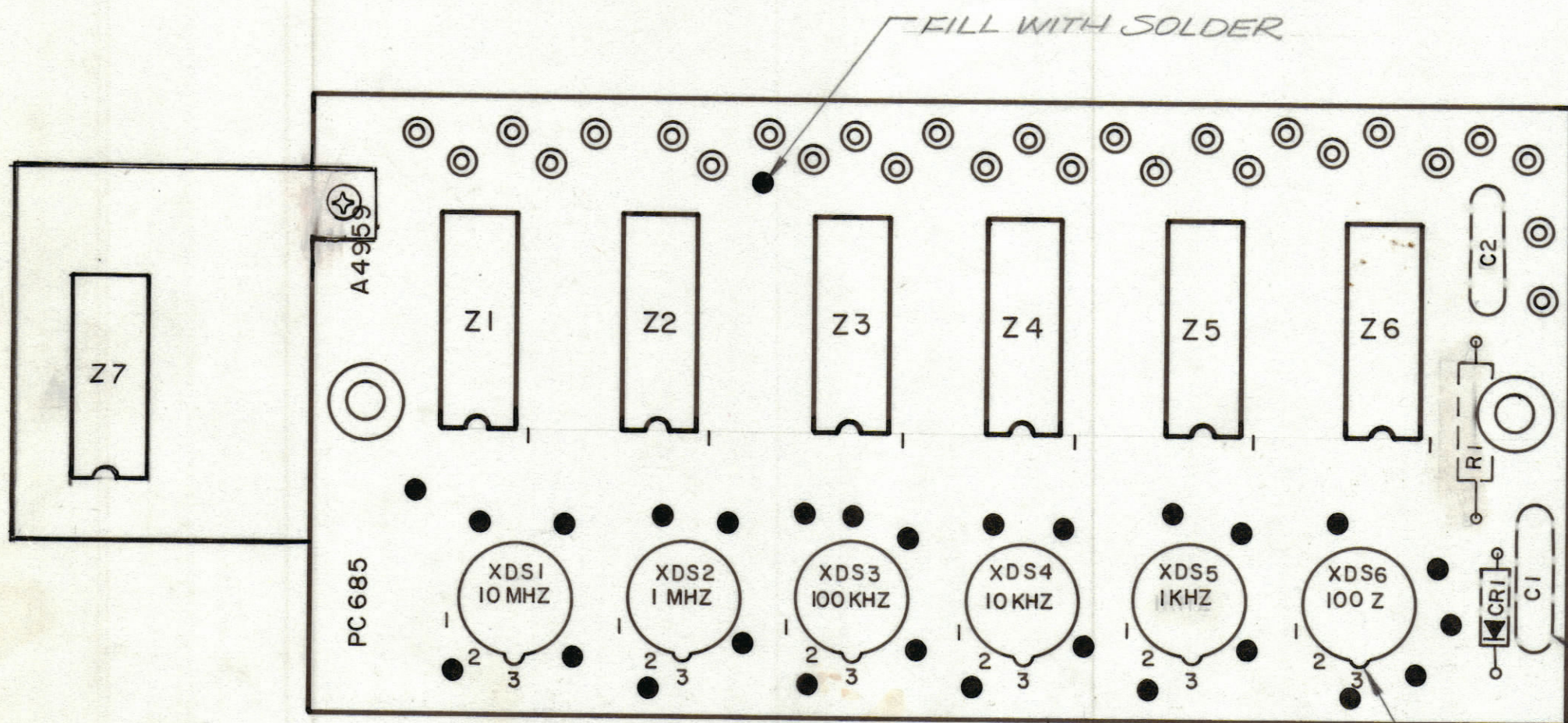


REVISIONS						
ZONE	LTR	DESCRIPTION	DATE	E.M.N.NO	DRAFT	CHKD APPD
	X	Z7 ADD	Z1177		GDL	

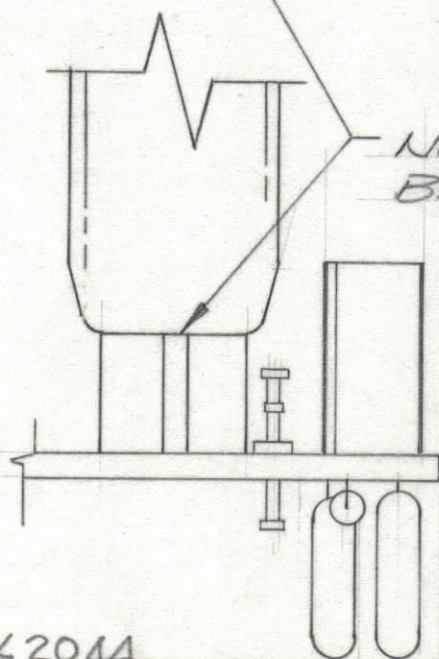


R1, C1, C2, & CRI LOCATED ON OPPOSITE SIDE

NOTE POSITION OF SOCKET BEFORE MTG.

ASSEMBLY NOTES

1. TO MOUNT COMPONENTS, INSERT LEADS THROUGH HOLES.
2. CAUTION WHEN APPLYING HEAT & SOLDER TO LEAD & FOIL.
3. CLEAN & INSPECT AS PER SPEC S676.
4. FOR ELECTRICAL COMPONENT PART NUMBERS REFER TO NPL A 4959
5. USE SYMBOL NUMBERS FOR ASSY REFERENCE.



REF: CK 2044

QTY. REQ.	ITEM	PART NO.	DESCRIPTION	SYMBOL
X	2	BS100	SOLDER TIN ALLOY	
1	1	PC685	PRINTED CIRCUIT BD	

F. BUDETTI LIST OF MATERIAL

FINAL APPROVAL	DATE	THE TECHNICAL MATERIEL CORP. MAMARONECK, NEW YORK <i>ASSY. PRINTED CIRCUIT BD.</i> <i>READOUT DISPLAY</i>	
MECH. DES.	DATE		
ELECT. DES.	DATE		
CHECKED	DATE		
DRAWN <i>QE</i>	DATE <i>11/14/73</i>		
SIZE	CODE IDENT. NO.	DWG NO.	ISSUE
C	82679	A 4959	X1
SCALE 2:1			SHEET OF

1	AX 5184	BMA 514
QTY / UNIT	MODEL USED ON	ASS'Y NO.
APPLICATION		
CODE		

NOTICE TO PERSONS RECEIVING THIS DRAWING
 THE TECHNICAL MATERIEL CORPORATION claims proprietary right in the material disclosed herein. This drawing is issued in confidence for engineering information only and may not be reproduced or used to manufacture anything shown herein without permission from THE TECHNICAL MATERIEL CORPORATION to the user. This drawing is loaned for mutual assistance and is subject to recall at any time.