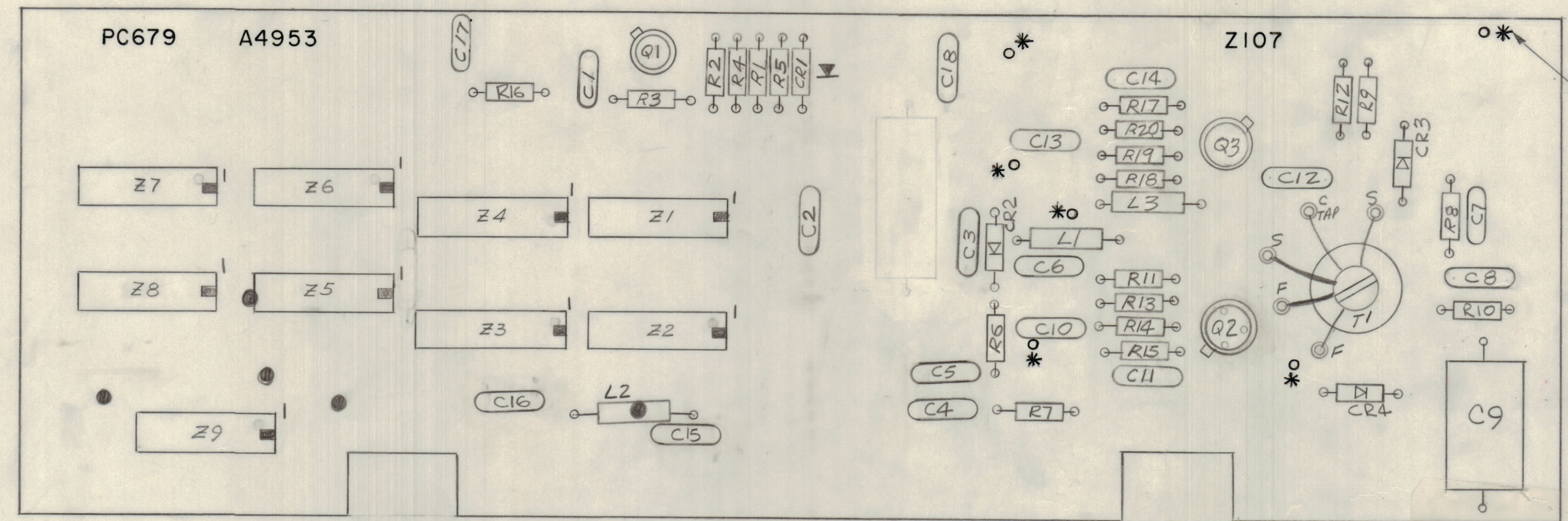
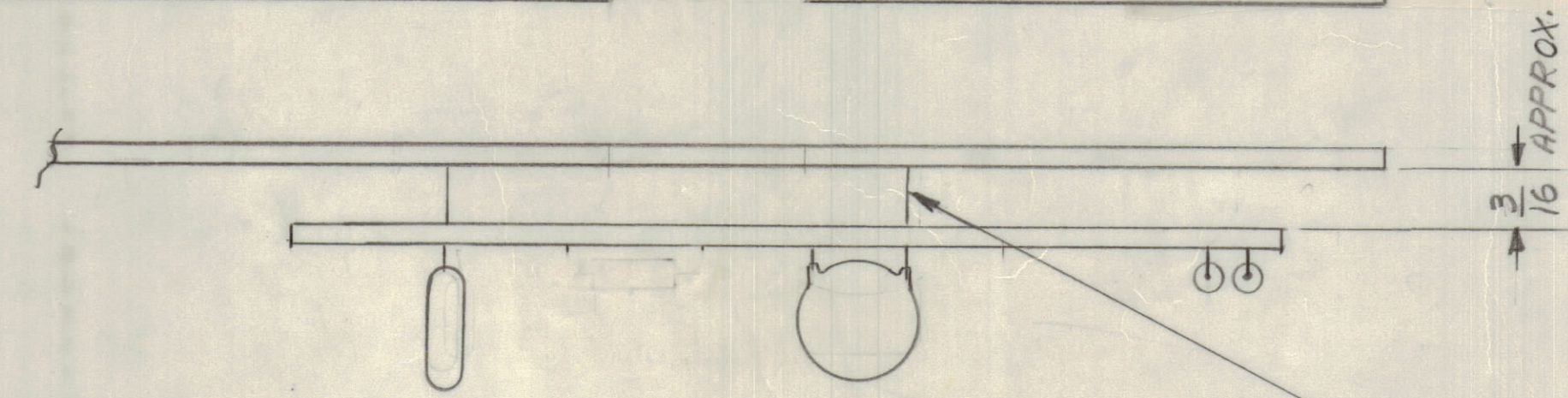


DO NOT USE, USE FOR SPARE PARTS ONLY

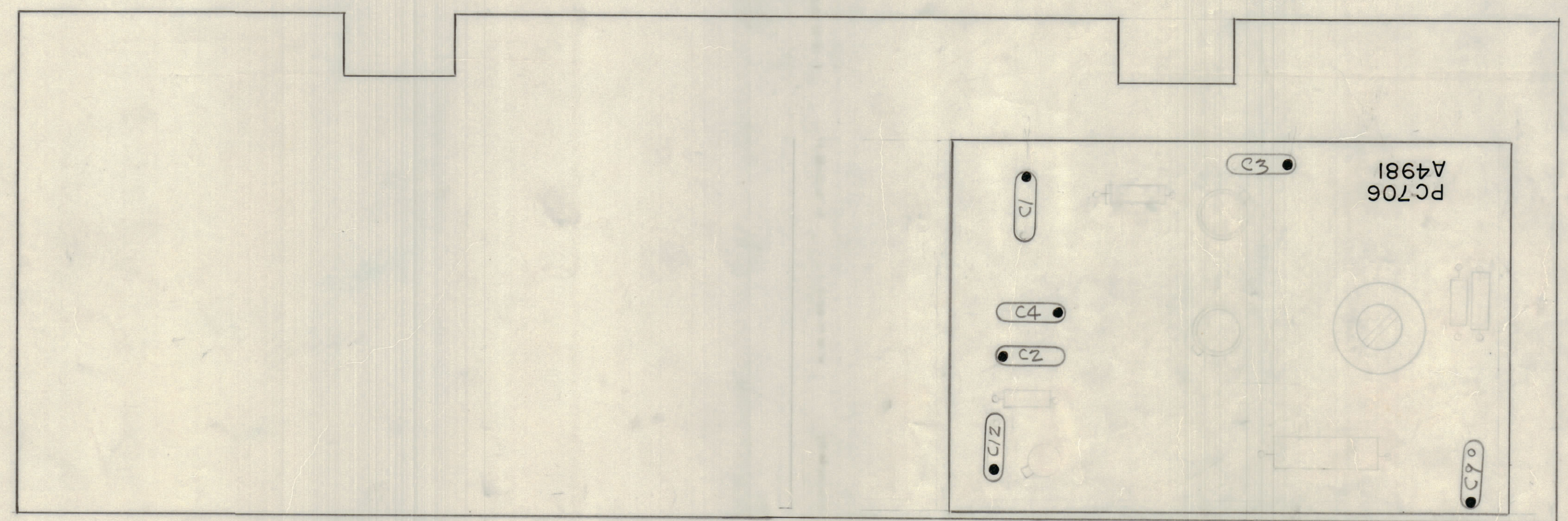
REVISIONS				DATE	APPROVED
E.M.	NO.	DRAFT	CHKD	ZONE	LTR



- ASSEMBLY NOTES**
1. TO MOUNT COMPONENTS INSERT LEADS THROUGH HOLES.
 2. CAUTION, WHEN APPLYING HEAT & SOLDER TO LEAD & FOIL.
 3. CLEAN & INSPECT AS PER SPEC S676.
 4. FOR ELECTRICAL COMPONENT PART NUMBERS REFER TO NPL A4953.
 5. USE SYMBOL NUMBERS FOR ASSY. REF.



MOUNT A4981 TO A4953, WITH COMPONENT LEADS AS SHOWN
HOLES AS NOTED AND SOLDER



QTY. REQ.	ITEM	PART NO.	DESCRIPTION	SYMBOL
X	3	BS100	SOLDER TIN ALLOY	
X	2	PC706	PRINTED CIRCUIT BD	
1	1	PC679	PRINTED CIRCUIT BD	

REF: CK1885

QTY / UNIT	MODEL USED ON	ASS'Y NO.
	BMA 515	GPR 110
APPLICATION		
	CODE	
NOTICE TO PERSONS RECEIVING THIS DRAWING		
<small>THE TECHNICAL MATERIEL CORPORATION claims proprietary right in the material disclosed hereon. This drawing is issued in confidence for engineering information only and may not be reproduced or used to manufacture anything shown hereon without permission from THE TECHNICAL MATERIEL CORPORATION to the user. This drawing is loaned for mutual assistance and is subject to recall at any time.</small>		

FINAL APPROVAL		DATE	LIST OF MATERIAL		
MECH. DES.		DATE	THE TECHNICAL MATERIEL CORP. MAMARONECK, NEW YORK ASSY PRINTED CIRCUIT BD SAMPLE DIVIDER/PHASE DETECTOR		
ELECT. DES.		DATE			
CHECKED		DATE			
DRAWN		DATE			
MATERIAL			SIZE	CODE IDENT NO. DWG NO.	ISSUE
FINISH			D	82679 A4953	
			SCALE		SHEET OF