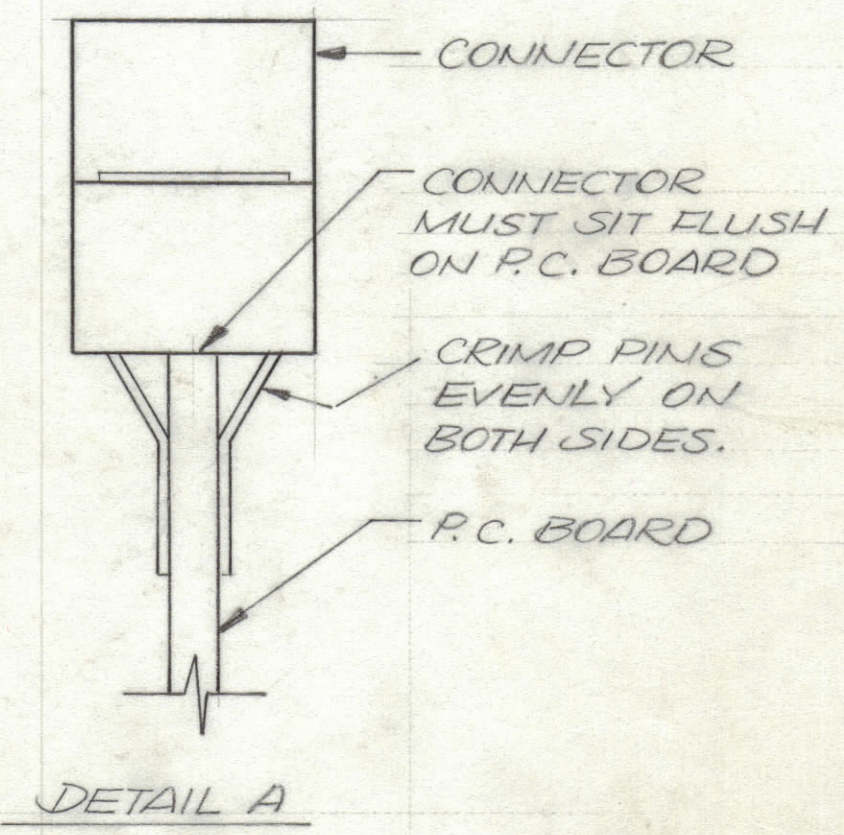
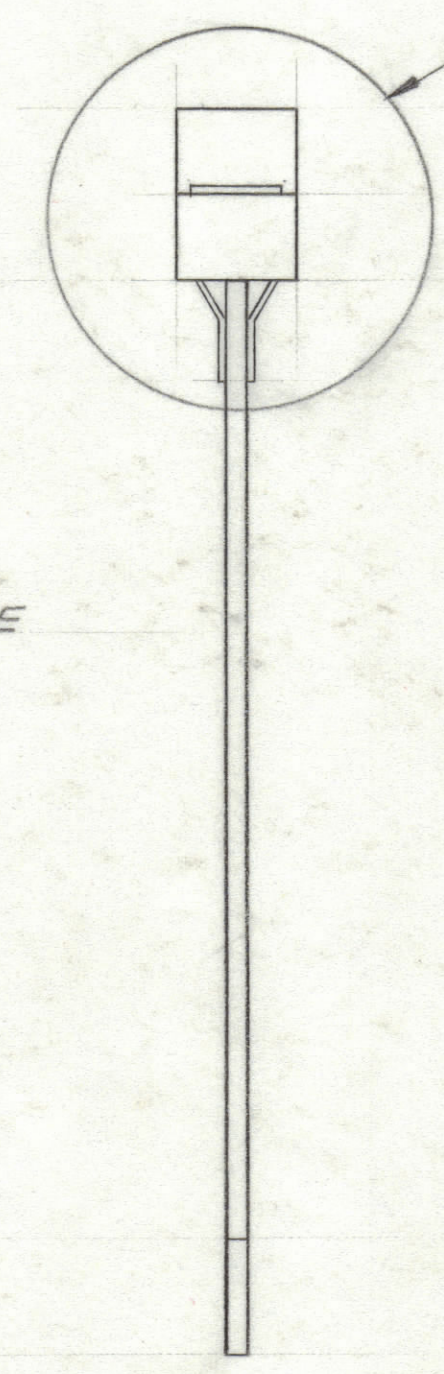
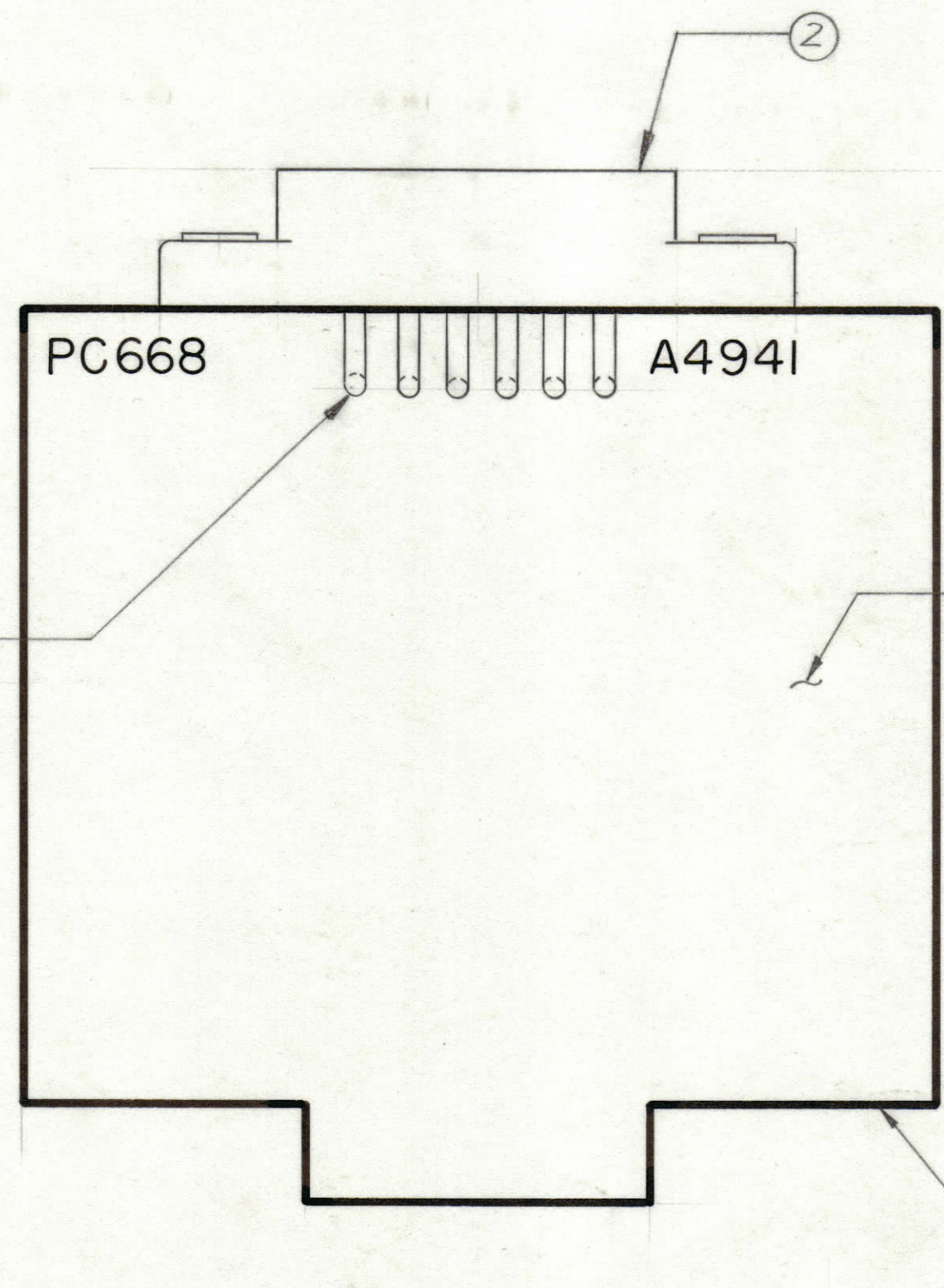


REVISIONS						
ZONE	LTR	DESCRIPTION	DATE	E.M.N.NO	DRAFT	CHKD APPD
	Ø	ORIGINAL RELEASE FOR PRODUCTION	3/8/74		D.Y.	



SOLDER CONN. TERMINALS TO EYELETS FRONT & REAR

COMPONENT SIDE

CONNECTOR

CONNECTOR MUST SIT FLUSH ON P.C. BOARD

CRIMP PINS EVENLY ON BOTH SIDES.

P.C. BOARD

DETAIL A

— ASSEMBLY NOTES —

1. TO MOUNT COMPONENTS, INSERT LEADS THROUGH HOLES.
2. CAUTION, WHEN APPLYING HEAT & SOLDER TO LEAD & FOIL.
3. CLEAN & INSPECT AS PER SPEC 5676.
4. FOR ELECTRICAL COMPONENT PART NOS. REFER TO NPL A 4941.
5. USE SYMBOL NOS. FOR ASSY. REF.

QTY. REQ.	ITEM	PART NO.	DESCRIPTION	SYMBOL
X 3		BS100	SOLDER TIN ALLOY	
1 2		JJ319-6DPD	CONN. RECEPTACLE, ELECT.	
1 1		PC668	PRINTED CIRCUIT BD.	

LIST OF MATERIAL				
QTY.	ITEM	PART NO.	DESCRIPTION	SYMBOL
Ø	POSE			

UNLESS OTHERWISE SPECIFIED DIMENSIONS ARE IN INCHES AND INCLUDE CHEMICALLY APPLIED OR PLATED FINISHES		FINAL APPROVAL O. POSE	DATE
TOLERANCES ON		MECH. DES.	DATE
DECIMALS	FRACTIONS	ELECT. DES.	DATE
.X ± .05	± 1/64	CHECKED	DATE
.XX ± .01	ANGLES	DRAWN	DATE
.XXX ± .005	± 0° -30'	EVANGELIST	1/11/73

THE TECHNICAL MATERIEL CORP.  
MAMARONECK, NEW YORK

ASSY. PRINTED CIRCUIT BD.  
TEST CARD

TM ( )		
QTY / UNIT	MODEL USED ON	ASSY NO.
APPLICATION		
CODE		
NOTICE TO PERSONS RECEIVING THIS DRAWING		
THE TECHNICAL MATERIEL CORPORATION claims proprietary right in the material disclosed hereon. This drawing is issued in confidence for engineering information only and may not be reproduced or used to manufacture anything shown hereon without permission from THE TECHNICAL MATERIEL CORPORATION to the user. This drawing is loaned for mutual assistance and is subject to recall at any time.		

SIZE	CODE IDENT. NO.	DWG NO.	ISSUE
C	82679	A4941	Ø
SCALE 2:1		SHEET	OF