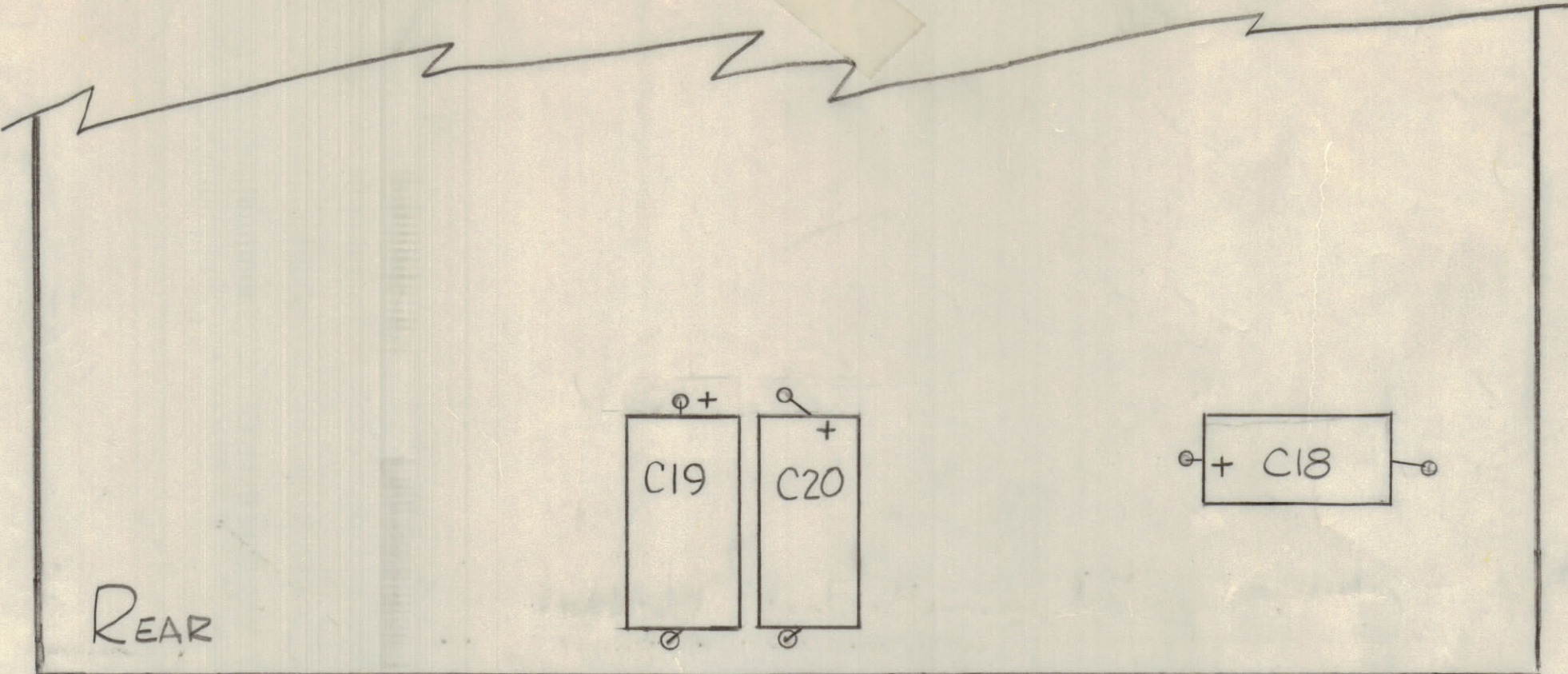
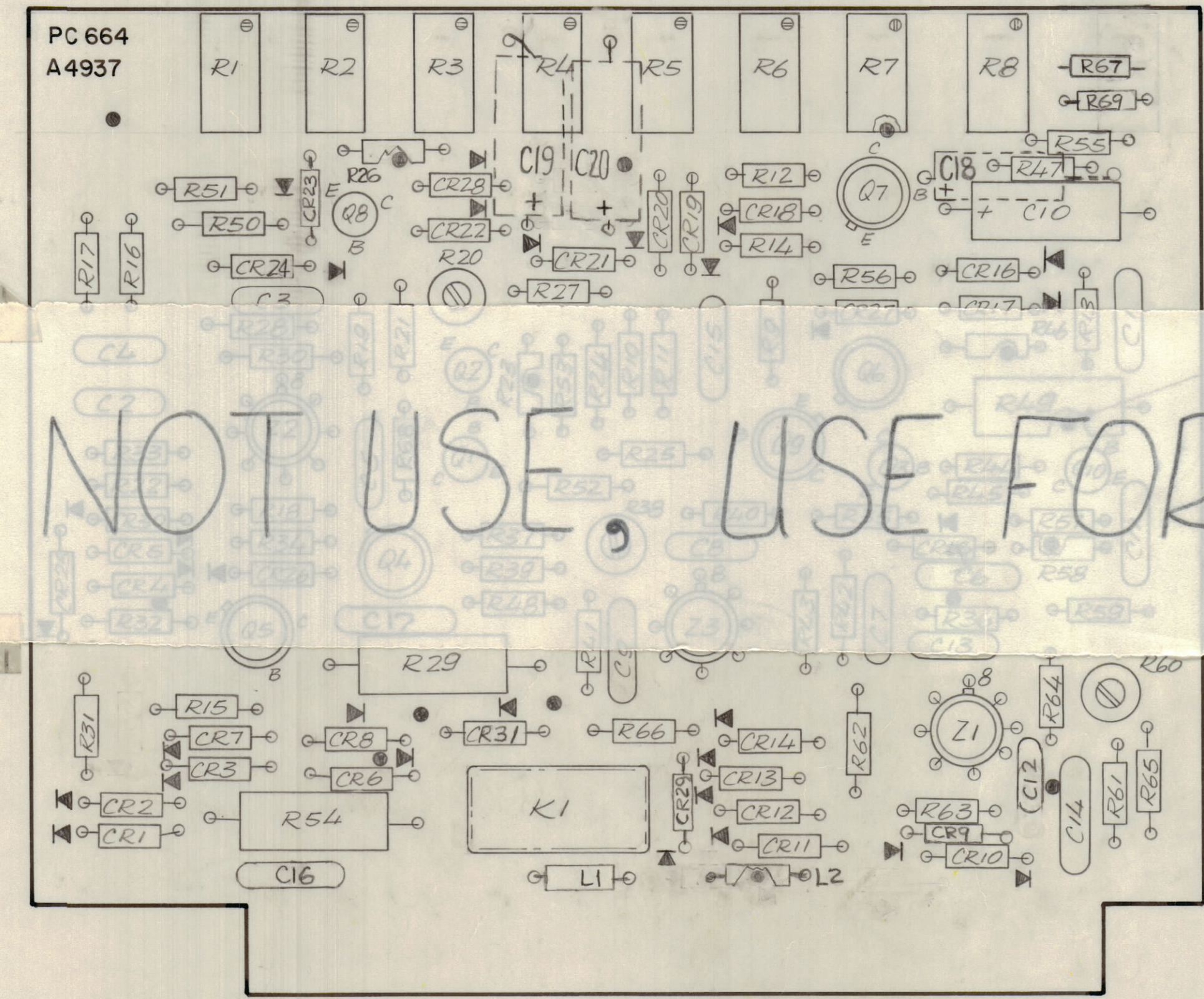


REVISIONS							
E.M.N.O.	DRAFT	CHKD	ZONE	LTR	DESCRIPTION	DATE	APPROVED
					ORIGINAL RELEASE FOR PRODUCTION	8/23/73	
21129				A	C18, C19, C20 & REAR VIEW ADDED	4-18-74	
21473				B	SPARE PARTS USE ONLY NOTE ADDED	8-20-76	KP.



C18, C19, C20 TO BE MOUNTED ON REAR OF BOARD

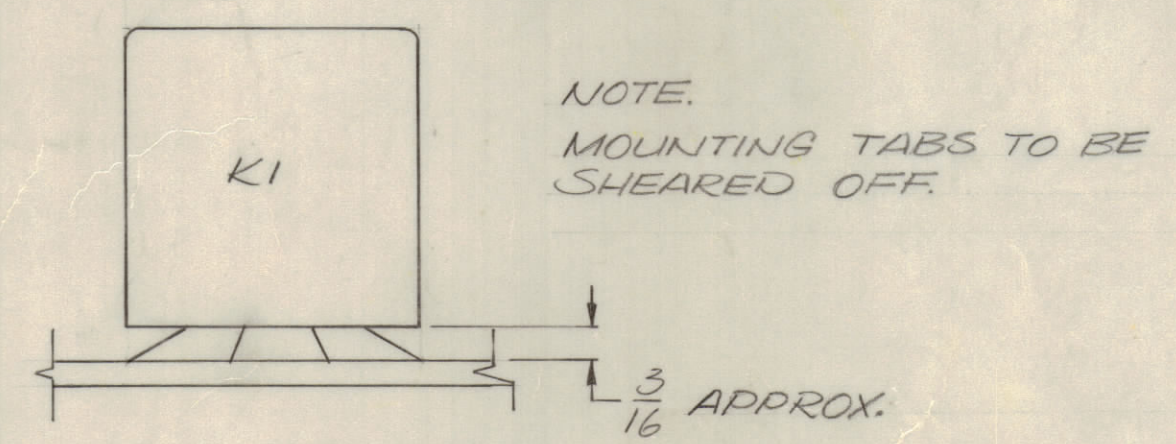


THIS DENOTES FILL WITH SOLDER WHERE EVER SHOWN.

ASSEMBLY NOTES

DO NOT USE FOR SPARE PARTS ONLY

1. MOUNT COMPONENTS. INSERT LEADS THROUGH HOLES.
 2. CAUTION. WHEN APPLYING HEAT & SOLDER TO LEAD & FOIL.
 3. CLEAN & INSPECT AS PER SPEC. 5676.
 4. FOR ELECTRICAL COMPONENTS PART NUMBERS REFER TO NPL A 4937.
 5. USE SYMBOLS AND REF. FOR ASSEMBLY REFERENCES.



QTY. REQ.	ITEM	PART NO.	DESCRIPTION	SYMBOL
X	2	BS 100	SOLDER TIN ALLOY	
1	1	PC 664	PRINTED CIRCUIT BD.	

F. BUDETTI LIST OF MATERIAL			
FINAL APPROVAL	DATE	THE TECHNICAL MATERIEL CORP. MAMARONECK, NEW YORK	
MECH. DES.	DATE	ASSY. PRINTED CIRCUIT BD. PRE-POSITION	
ELECT. DES.	DATE	SIZE	CODE IDENT NO. DWG NO.
CHECKED	DATE	D	82679 A4937
DRAWN	DATE	SCALE	2:1 SHEET OF
			B

1 ATSA-3		
QTY / UNIT	MODEL USED ON	ASSY NO.
APPLICATION		
CODE		
MATERIAL		
FINISH		

NOTICE TO PERSONS RECEIVING THIS DRAWING
 THE TECHNICAL MATERIEL CORPORATION claims proprietary right in the material disclosed herein. This drawing is issued in confidence for engineering information only and may not be reproduced or used to manufacture anything shown hereon without permission from THE TECHNICAL MATERIEL CORPORATION to the user. This drawing is loaned for mutual assistance and is subject to recall at any time.