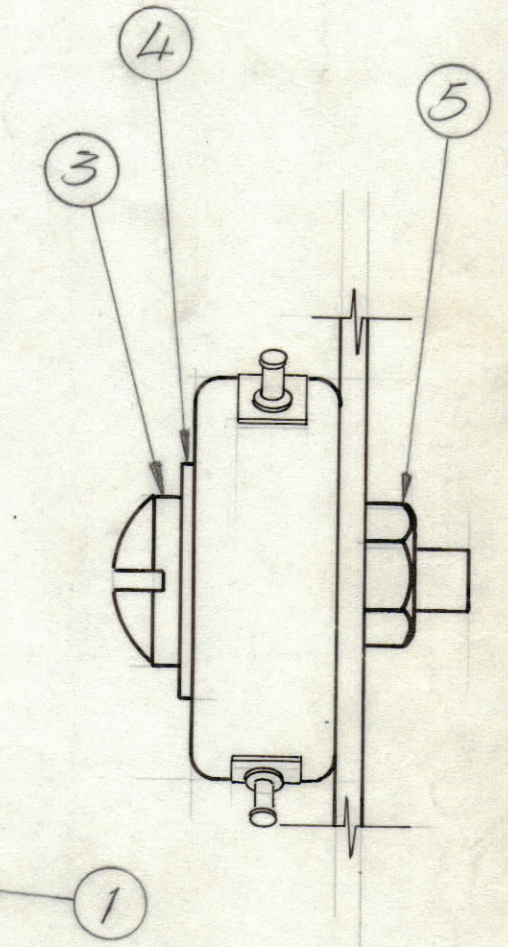
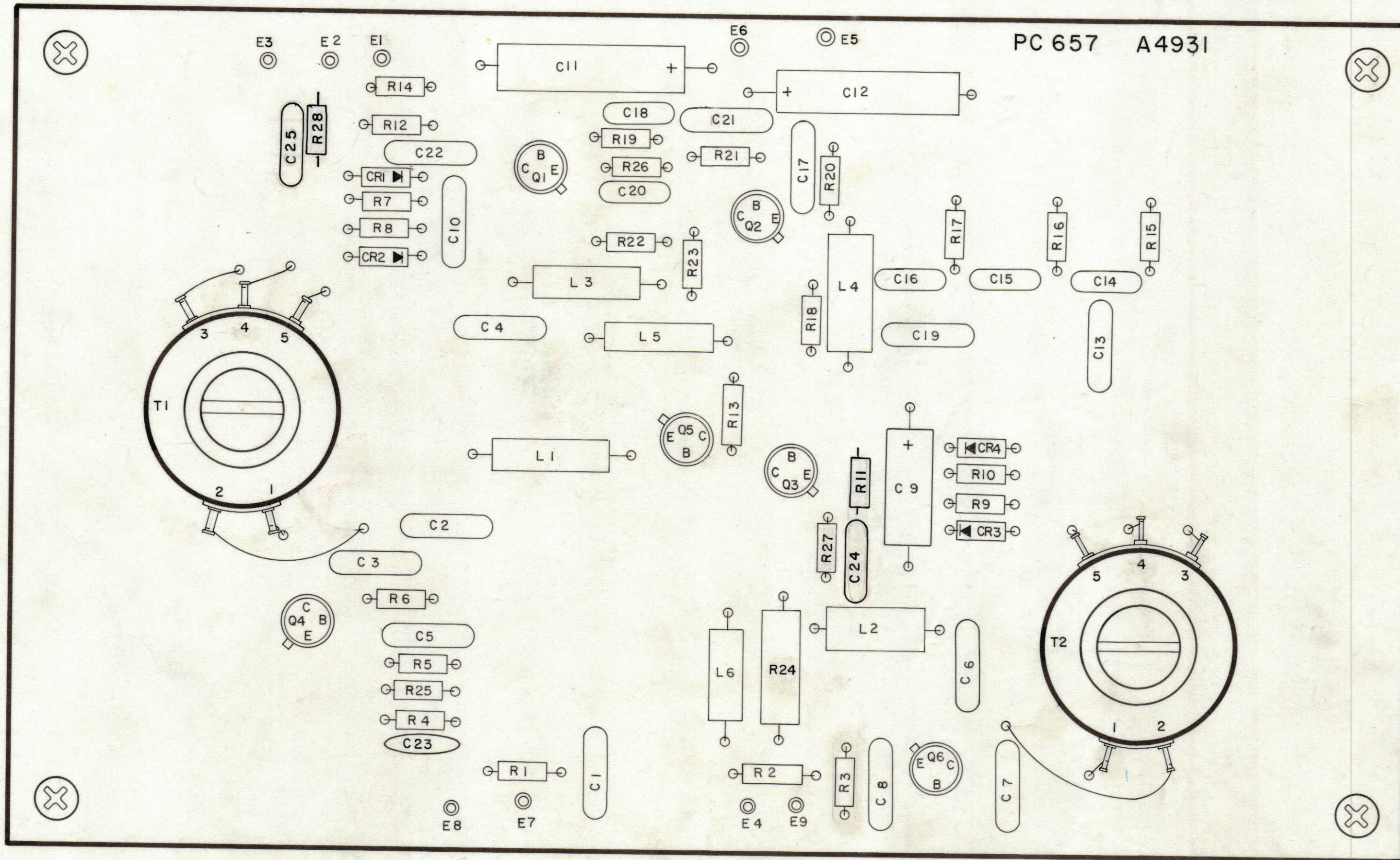


REVISIONS						
ZONE	LTR	DESCRIPTION	DATE	E.M.N.NO	DRAFT	CHKD
	Ø	ORIGINAL RELEASE FOR PRODUCTION	11-13-72		Ø	
	A	REV EG E5 ADD MKRS TO T1ET2	1-15-73	20980	GE	Ø
	B	R27 WAS CR5	2-12-73	21010	GE	Ø
	C	ADD C23 C24	2-21-73		EE	Ø
		C25, R28 Added	11-13-73	21024	Ø	Ø



- ASSEMBLY NOTES**
1. TO MOUNT COMPONENTS, INSERT LEADS THROUGH HOLES.
 2. CAUTION, WHEN APPLYING HEAT AND SOLDER TO LEAD AND FOIL.
 3. CLEAN AND INSPECT AS PER SPEC. S676.
 4. FOR ELECTRICAL COMPONENT PART NOS. REFER TO NPL A4931.
 5. USE SYMBOL NOS. FOR ASSY. REFERENCE.

QTY. REQ.	ITEM	PART NO.	DESCRIPTION	SYMBOL
2	5	NT137-1032	NUT NYLON	
2	4	WA109-54	WASHER FIBER	
2	3	SC143-1032-B-12-N	SCREW NYLON	
X	2	BS100	SOLDER TIN ALLOY	
1	1	PC 657	PRINTED CIRCUIT B.D.	

1 RSU-1		
QTY / UNIT	MODEL USED ON	ASS'Y NO.
APPLICATION		
CODE		
<small>NOTICE TO PERSONS RECEIVING THIS DRAWING</small> THE TECHNICAL MATERIEL CORPORATION claims proprietary right in the material disclosed hereon. This drawing is issued in confidence for engineering information only and may not be reproduced or used to manufacture anything shown hereon without permission from THE TECHNICAL MATERIEL CORPORATION to the user. This drawing is loaned for mutual assistance and is subject to recall at any time.		

UNLESS OTHERWISE SPECIFIED DIMENSIONS ARE IN INCHES AND INCLUDE CHEMICALLY APPLIED OR PLATED FINISHES		FINAL APPROVAL <i>[Signature]</i>	DATE 11-13-72
TOLERANCES ON		MECH. DES. <i>[Signature]</i>	DATE
DECIMALS	FRACTIONS	ELECT. DES. <i>[Signature]</i>	DATE
.X ± .05	± 1/64	CHECKED	DATE
.XX ± .01	ANGLES	DRAWN GE	DATE 11/11/72
.XXX ± .005	± 0° -30'	MATERIAL	
FINISH		SIZE CODE IDENT. NO. DWG NO.	

LIST OF MATERIAL			
THE TECHNICAL MATERIEL CORP. MAMARONECK, NEW YORK			
ASSY. PRINTED CIRCUIT B.D.			
PHASE DETECTOR			
SCALE	2:1	ISSUE	C
SHEET		OF	