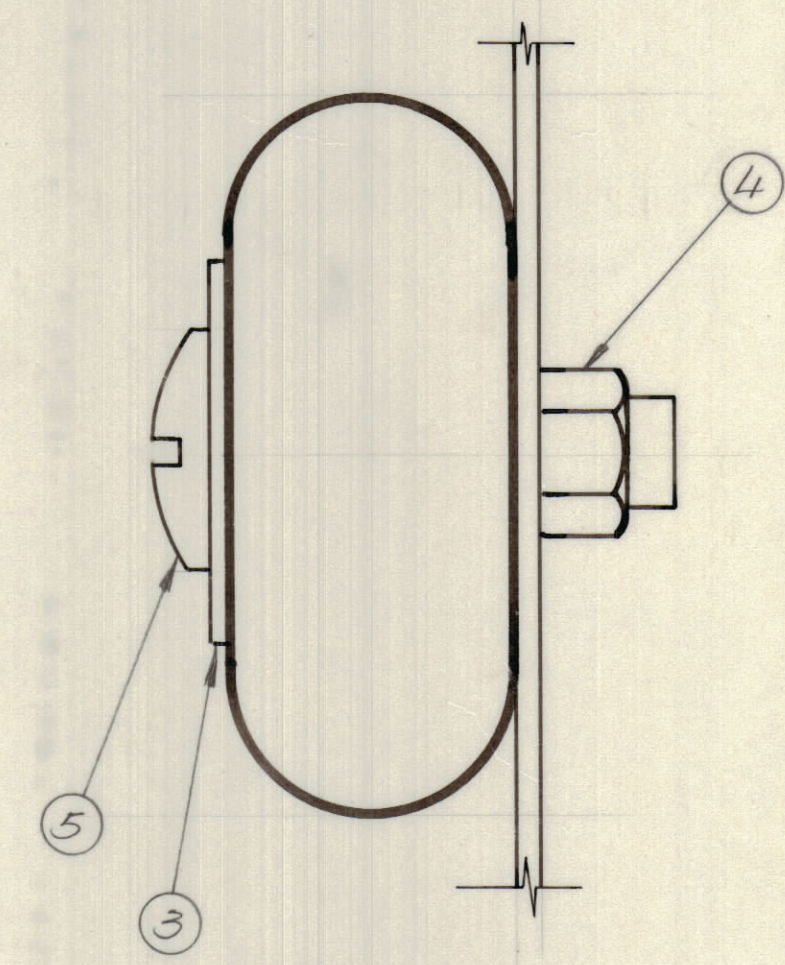
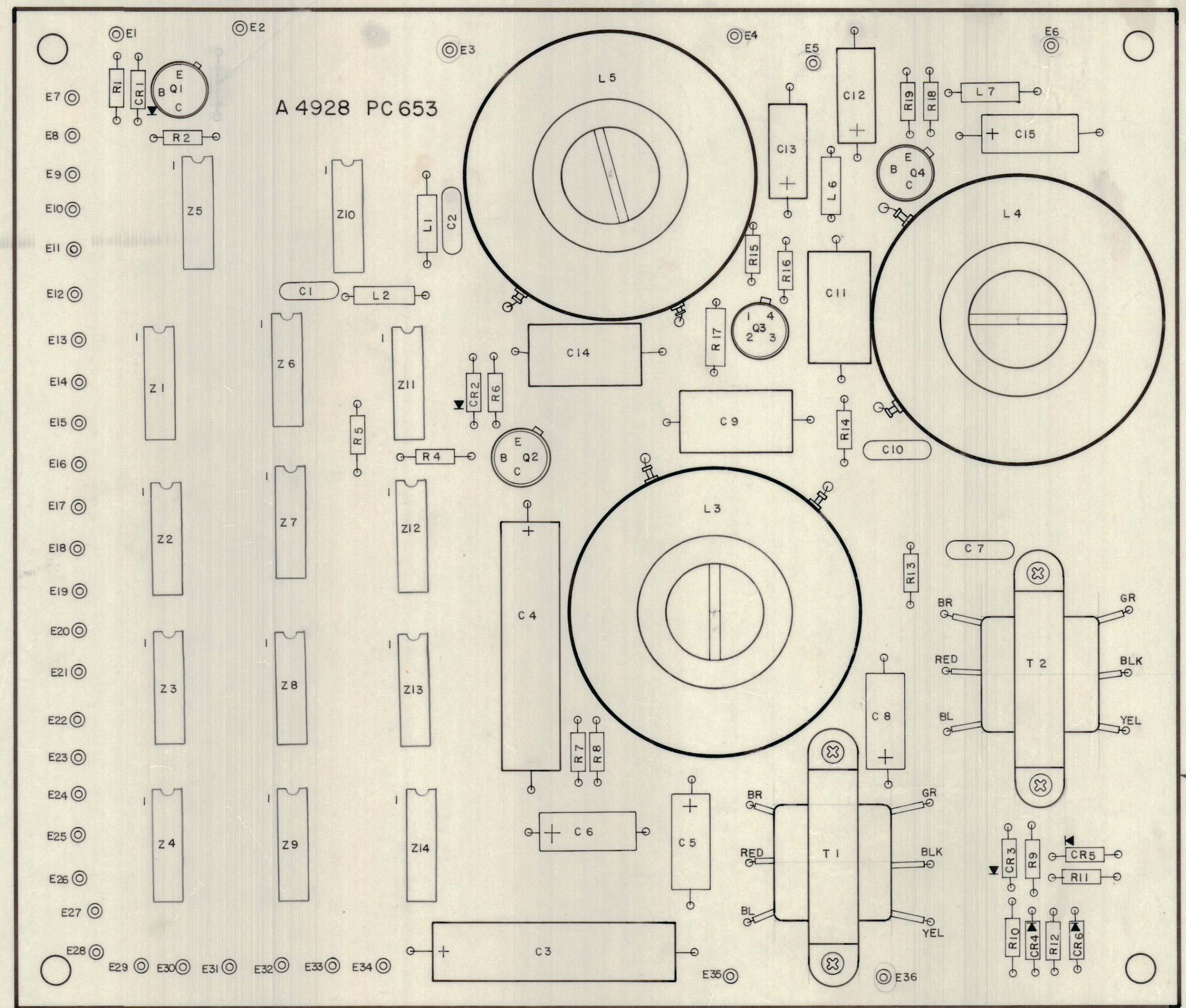


REVISIONS							
E.M.N.O	DRAFT	CHKD	ZONE	LTR	DESCRIPTION	DATE	APPROVED
					ORIGINAL RELEASE FOR PRODUCTION	11-6-72	
21043	GE	EP		A	DELE R3 REPLACE W/ JUMPER	3/28/73	
21044				B	Item (6) W/100 DELETED	10-3-73	



ASSEMBLY NOTES

1. TO MOUNT COMPONENTS, INSERT LEADS THROUGH PLATED THRU HOLES.
2. CAUTION, WHEN APPLYING HEAT & SOLDER TO LEAD AND FOIL.
3. CLEAN AND INSPECT AS PER SPEC. 5676.
4. FOR ELECTRICAL COMPONENT PART NUMBERS REFER TO NPL A4928.
5. USE SYMBOL NUMBERS FOR ASSEMBLY REFERENCE.
6. USE ITEM 6 FOR ALL JUMPERS.

(SERIES 500)

QTY. REQ.	ITEM	PART NO.	DESCRIPTION	SYMBOL
	6	DELETED		
3	5	SC143-2520-B	SCREW, NYLON	
3	4	NT 137-2520	NUT, NYLON	
3	3	WA 109-55	WASHER, FIBER	
X	2	BS 100	SOLDER TIN ALLOY	
1	1	PC 653	PRINTED CIRCUIT BOARD	

LIST OF MATERIAL			
FINAL APPROVAL	DATE	THE TECHNICAL MATERIEL CORP.	
MECH. DES.	DATE	MAMARONECK, NEW YORK	
ELECT. DES.	DATE	ASSY. PRINTED CIRCUIT BD	
CHECKED	DATE	PROGRAMMABLE DIVIDER	
DRAWN	DATE	SIZE	CODE IDENT NO. DWG NO.
EVANGELIST	11/2/72	D	82679 A4928
		ISSUE	B

1 RSU-1		
QTY / UNIT	MODEL USED ON	ASSY NO.
APPLICATION		
CODE		
NOTICE TO PERSONS RECEIVING THIS DRAWING		
THE TECHNICAL MATERIEL CORPORATION claims proprietary right in the material disclosed hereon. This drawing is issued in confidence for engineering information only and may not be reproduced or used to manufacture anything shown hereon without permission from THE TECHNICAL MATERIEL CORPORATION to the user. This drawing is loaned for mutual assistance and is subject to recall at any time.		

TOLERANCES ON	
DECIMALS	FRACTIONS
.X ± .05	± 1/64
.XX ± .01	ANGLES ± 0° - 30'
.XXX ± .005	