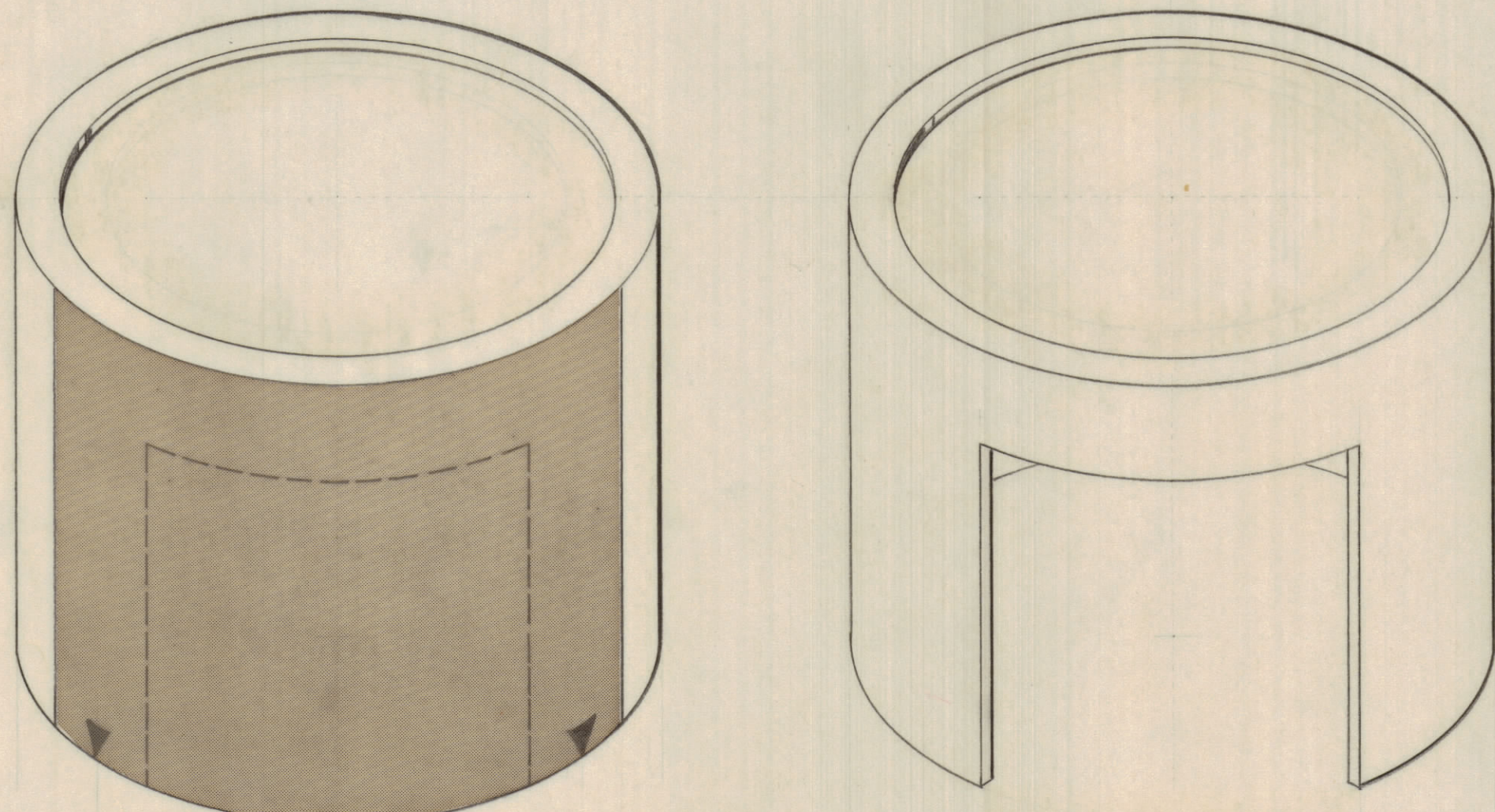
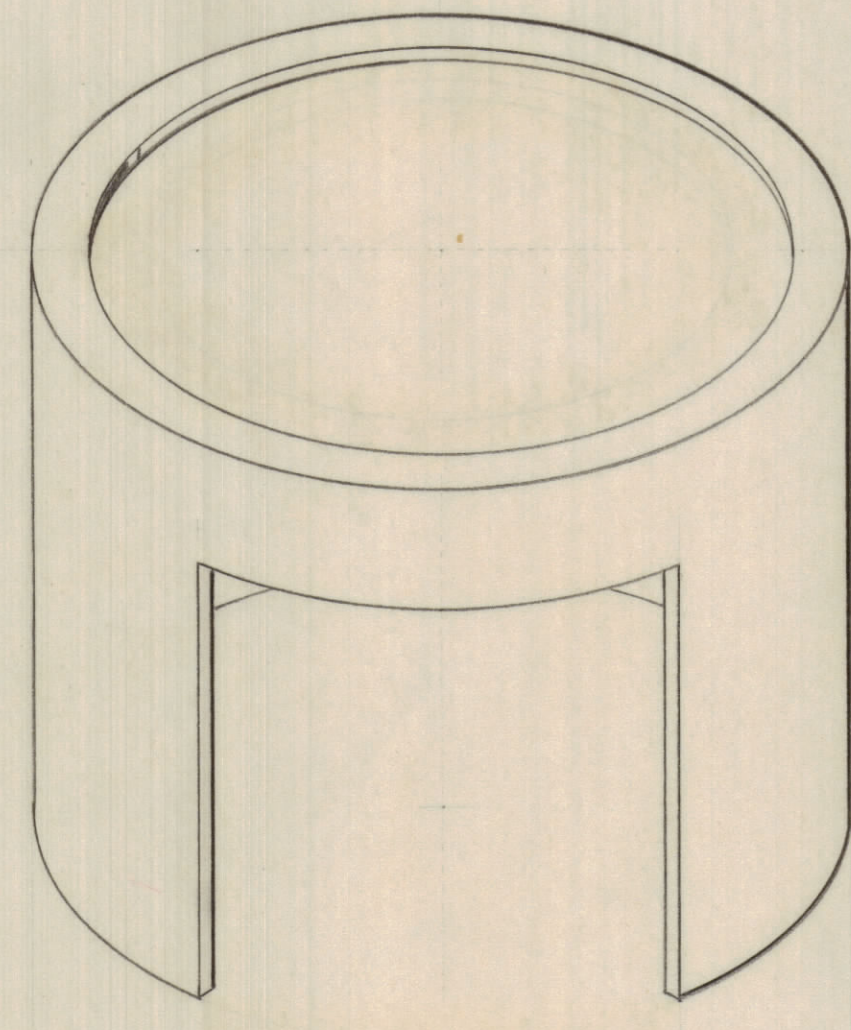


STEP 1 AIR BAFFLE CUTOUT

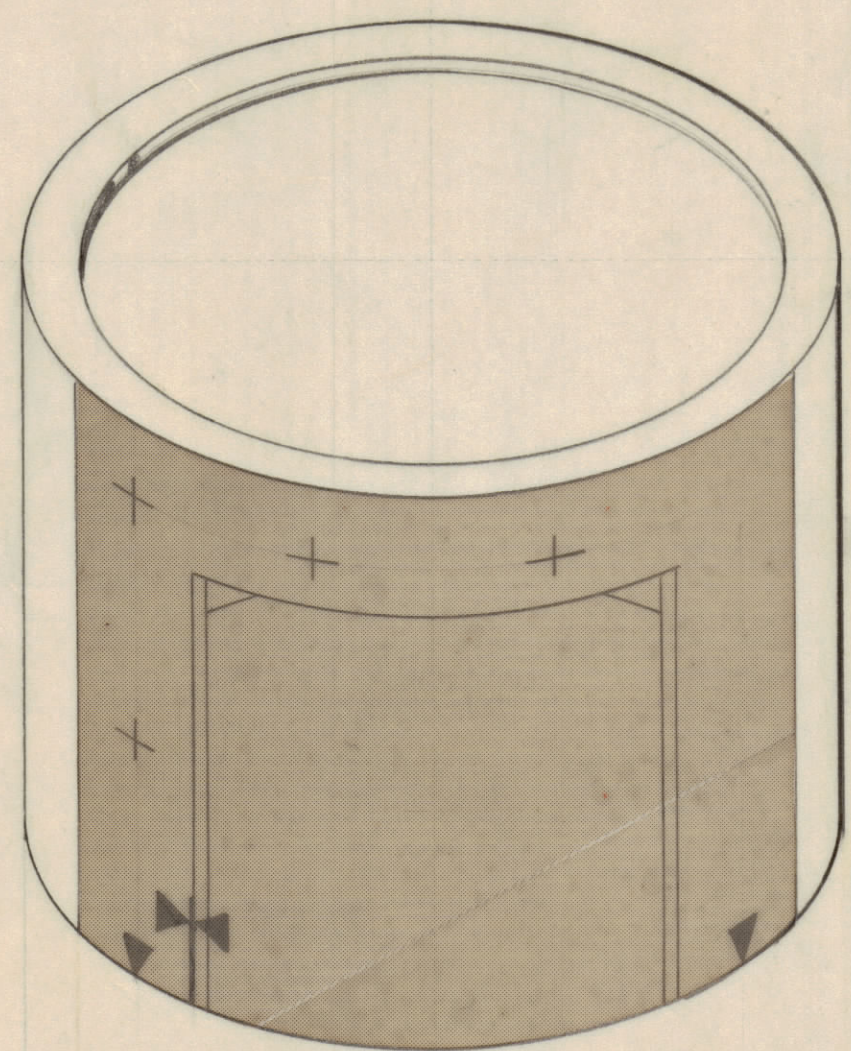


CUT OUT TEMPLATE 'A' AND ALIGN TO SURFACE OF AIR BAFFLE AS SHOWN (ARROWS TO ALIGN WITH BOTTOM EDGE AS SHOWN) MARK AREA TO BE CUT OUT & CUT OUT.

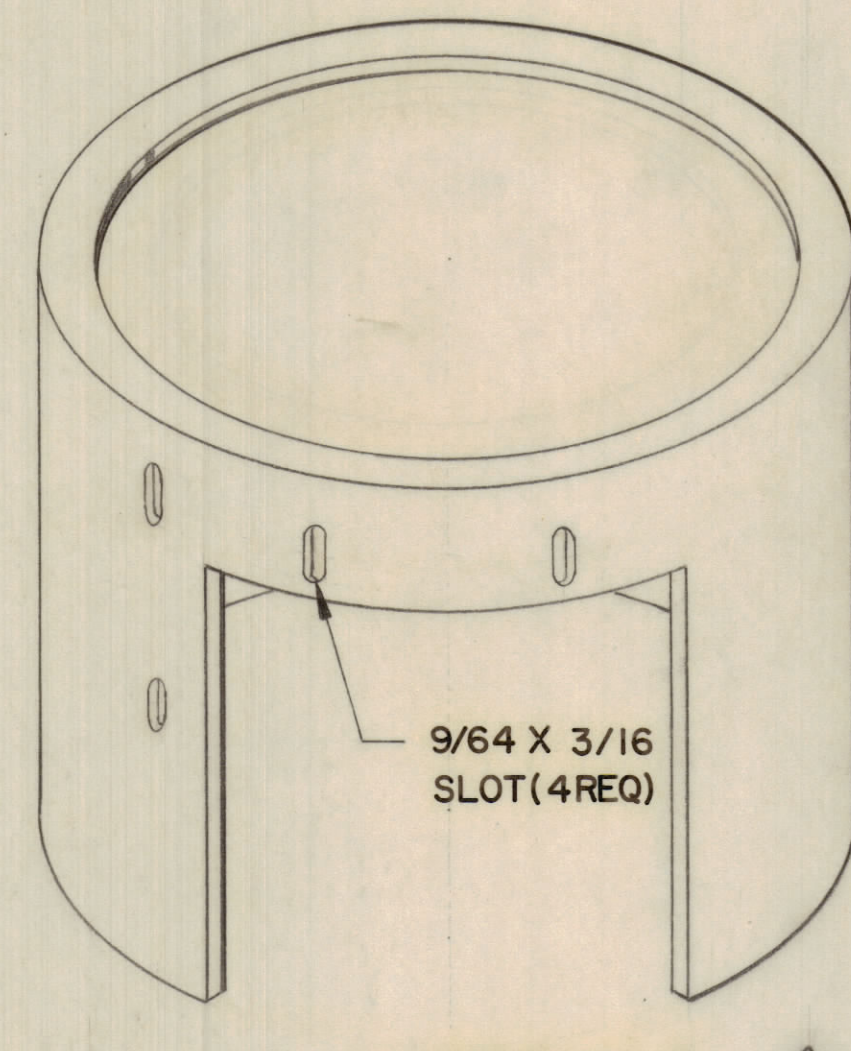


TEMPLATE A

STEP-2 ALIGNMENT OF MTG HOLES



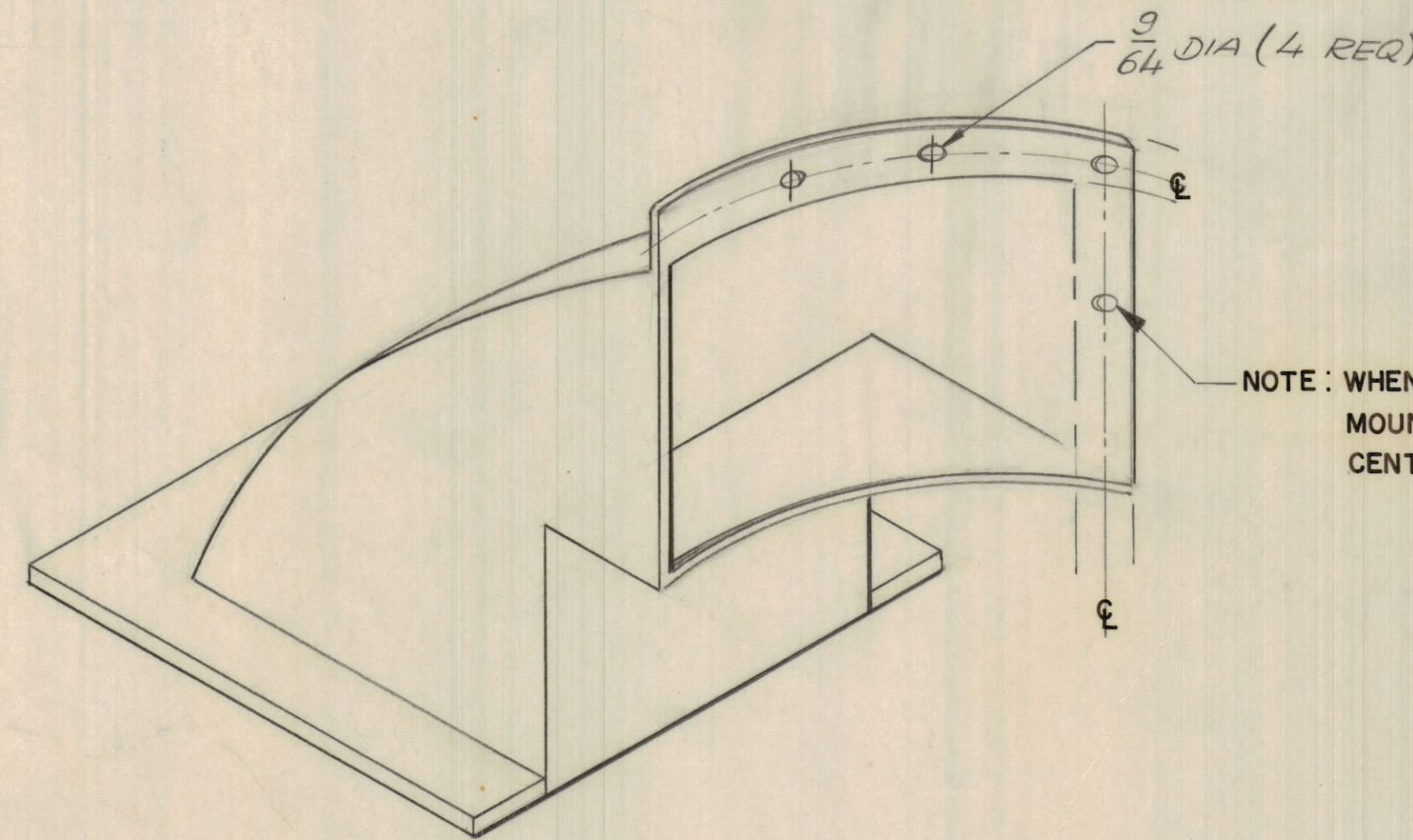
CUT OUT TEMPLATE 'B' AND ALIGN TO SURFACE OF AIR BAFFLE AS SHOWN. BE SURE ARROWS 'B' LINE UP WITH BOTTOM EDGE AND THAT ARROWS 'A' ALIGN TO EDGE OF CUTOUT AS SHOWN. MARK MTG HOLE POINTS ON BAFFLE & DRILL.



TEMPLATE B

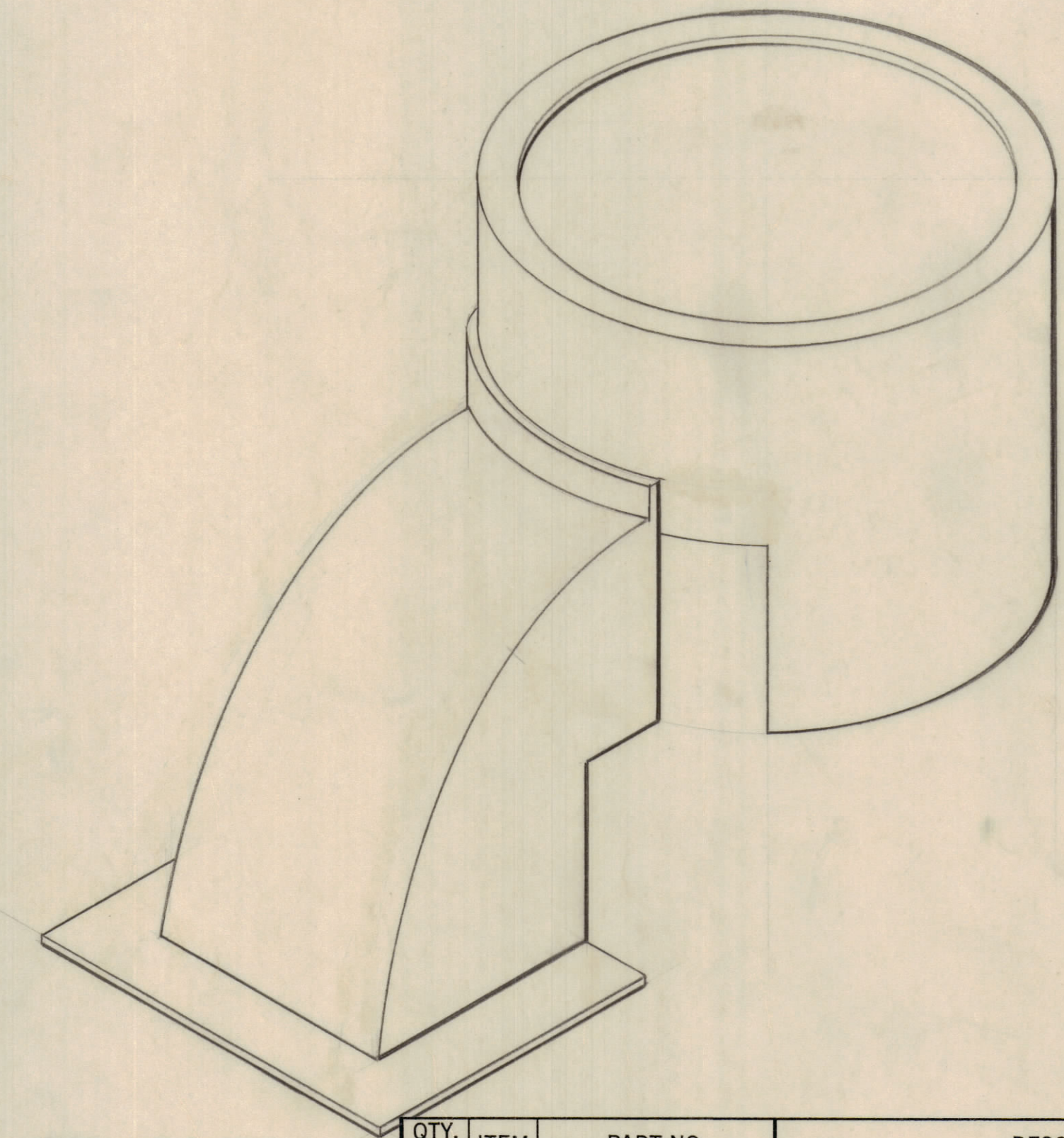
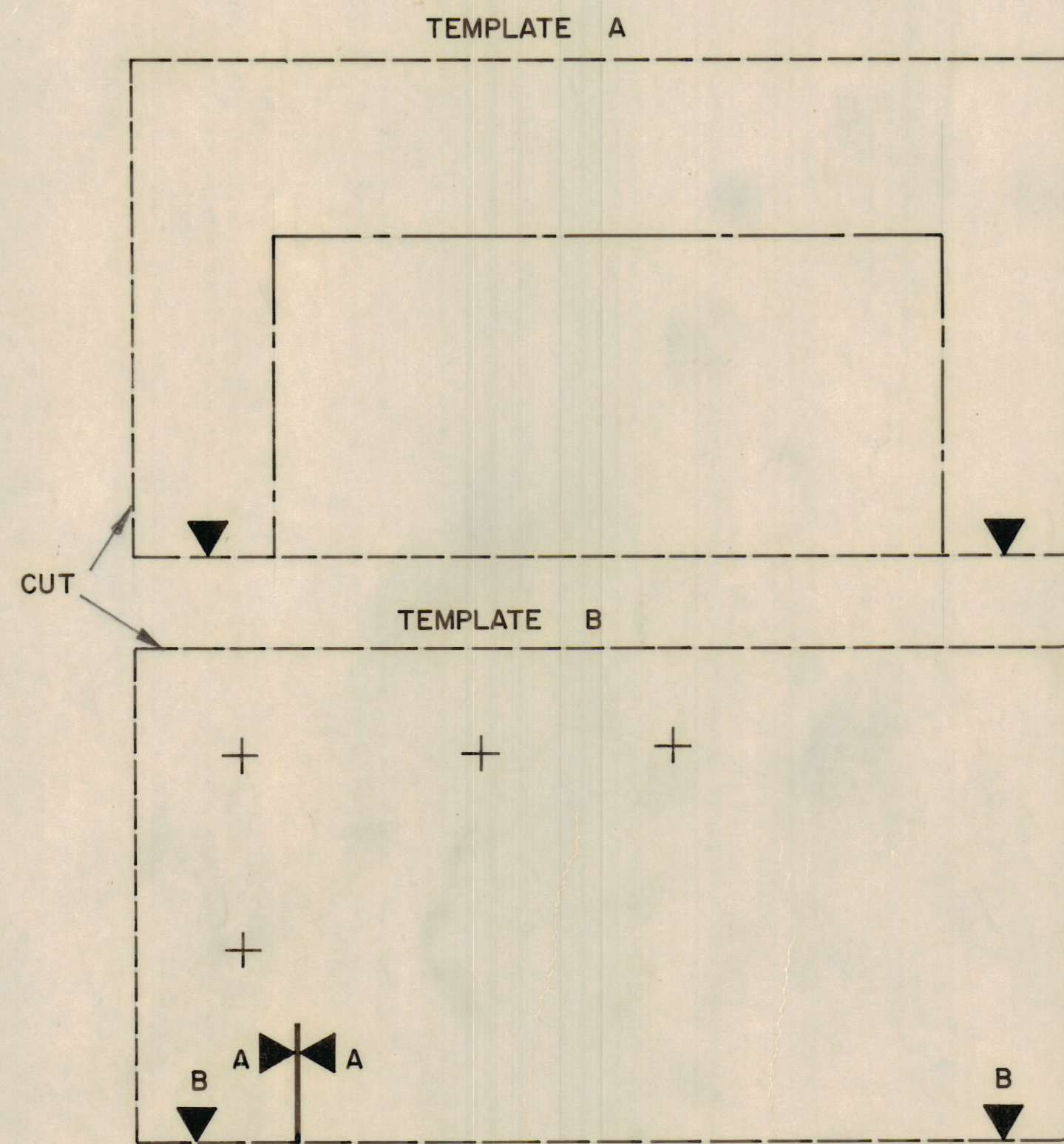
9/64 X 3/16 SLOT (4 REQ)

STEP-3 FLUE & BAFFLE MOUNTING



NOTE: WHEN MARKING POSITIONS FOR MOUNTING HOLES IN FLUE, CENTER HOLES ABOUT LIP AS SHOWN.

TO MOUNT ELBOW FLUE TO AIR BAFFLE ALIGN FLUE TO BAFFLE IN THE POSITION TO BE USED. MARK FLUE WHERE MOUNTING HOLES WILL ALIGN WITH SLOTS IN BAFFLE.



REF. PX 1099  
REF. PX 1156

QTY. REQ.	ITEM	PART NO.	DESCRIPTION	SYMBOL
	F.B.		ELBOW FLUE & AIR BAFFLE ASSEMBLY	

QTY. REQ.	ITEM	PART NO.	DESCRIPTION	SYMBOL
	F.B.		ELBOW FLUE & AIR BAFFLE ASSEMBLY	

QTY. REQ.	ITEM	PART NO.	DESCRIPTION	SYMBOL
	F.B.		ELBOW FLUE & AIR BAFFLE ASSEMBLY	

TLAA-1K		
TLAM-1K		
QTY / UNIT	MODEL USED ON	ASS'Y NO.
	APPLICATION	
	CODE	
<p>NOTICE TO PERSONS RECEIVING THIS DRAWING</p> <p>THE TECHNICAL MATERIEL CORPORATION claims proprietary right in the material disclosed herein. This drawing is issued in confidence for engineering information only and may not be reproduced or used to manufacture anything shown herein without permission from THE TECHNICAL MATERIEL CORPORATION to the user. This drawing is loaned for mutual assistance and is subject to recall at any time.</p>		
MATERIAL		
FINISH		

UNLESS OTHERWISE SPECIFIED DIMENSIONS ARE IN INCHES AND INCLUDE CHEMICALLY APPLIED OR PLATED FINISHES	
TOLERANCES ON DECIMALS	FRACTIONS
.X ± .05	± 1/64
.XX ± .01	ANGLES
.XXX ± .005	± 0° -30°

FINAL APPROVAL	DATE
MECH. DES.	DATE
ELECT. DES.	DATE
CHECKED	DATE
DRAWN	DATE
EVANGELIST	1/10/72

SIZE	CODE	IDENT NO.	DWG NO.	ISSUE
D	82679		A4916	Ø
SCALE NTS				SHEET OF