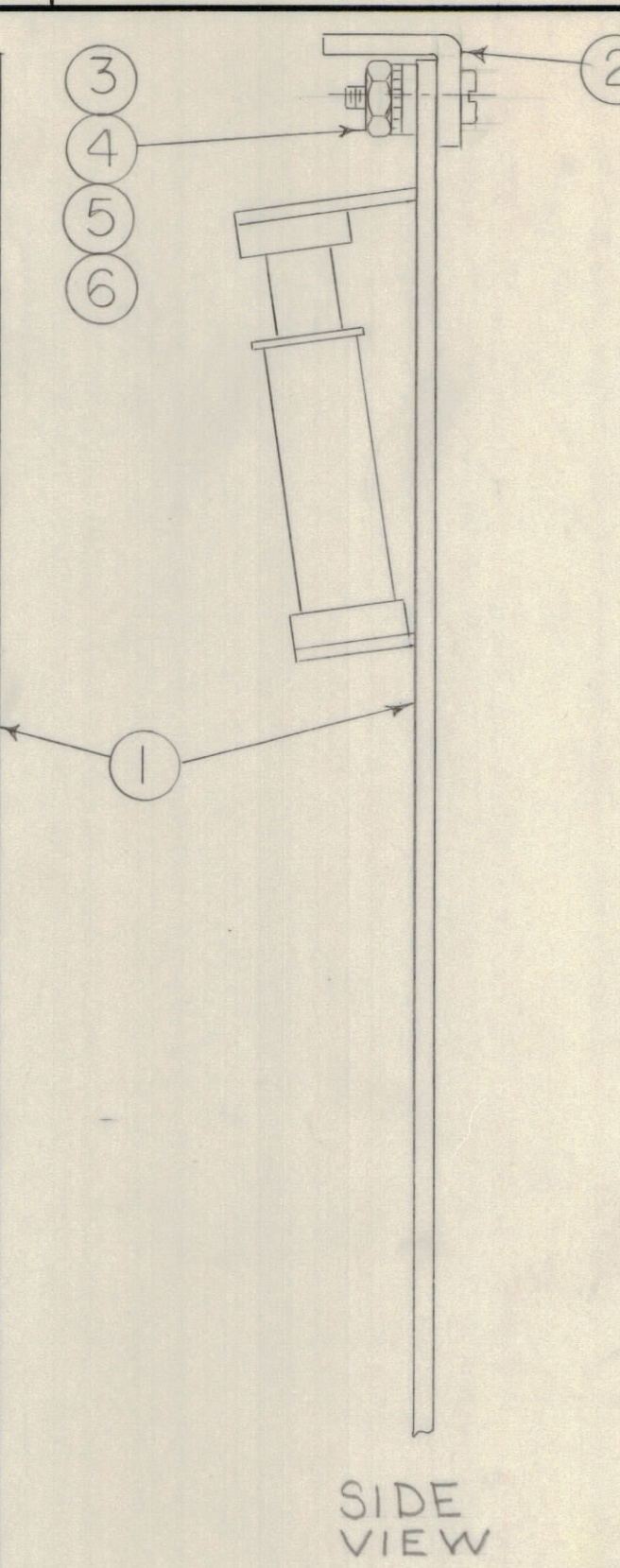
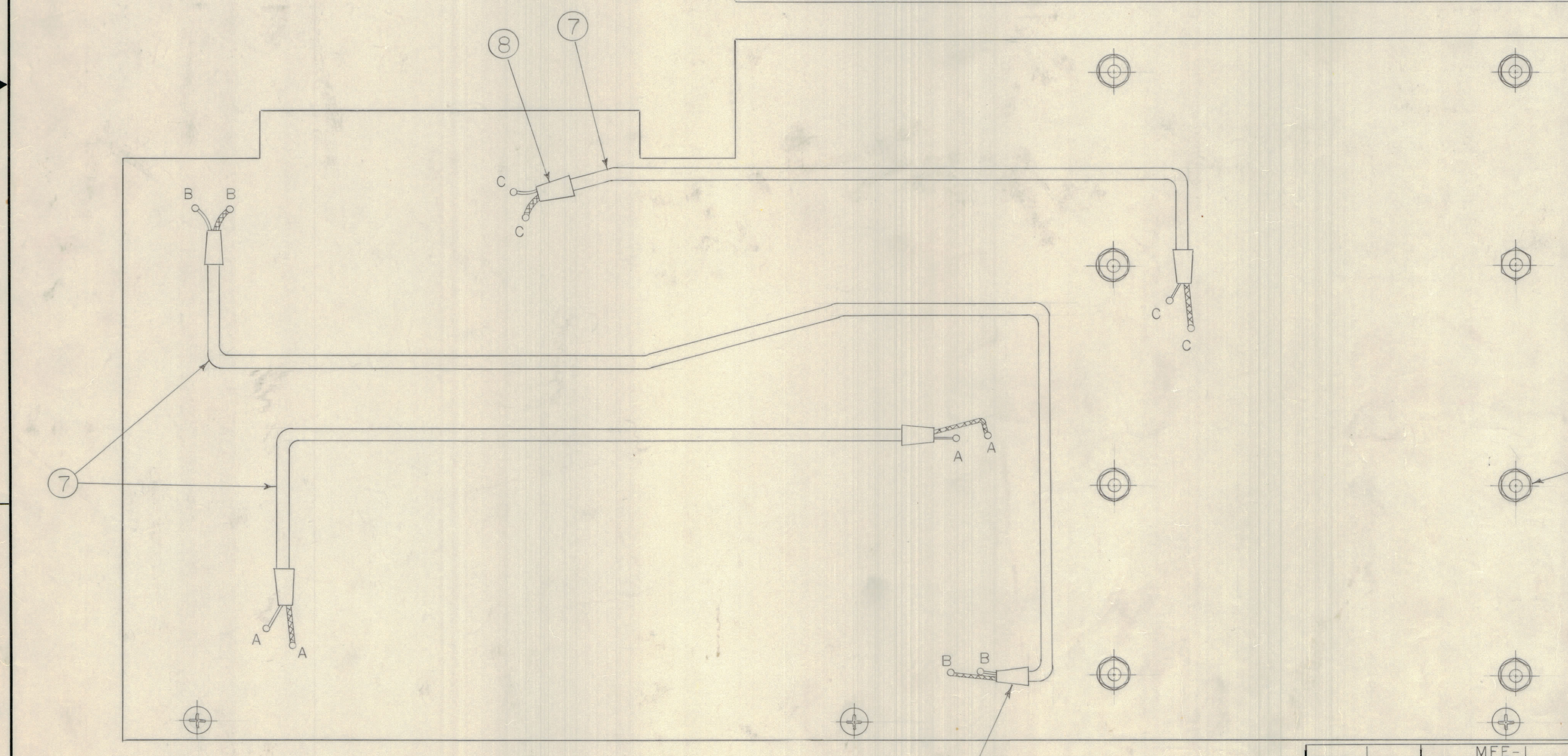


FRONT VIEW



SIDE VIEW



REAR VIEW

REVISIONS							
E.M.N.O	DRAFT	CHKD	ZONE	LTR	DESCRIPTION	DATE	APPROVED
	W			Ø	ORIGINAL RELEASE FOR PRODUCTION	10/1/71	
	RG			A	DELE C15, 61, 59, 54, CR5, L7, 8, 10, 1 R22, 23, 69	2/24/72	SP
21551				B	ON PICT: CHG 2ND OCCURRENCE OF R30 TO R27	5/16/77	

ASSEMBLY NOTES

1. TO MOUNT COMPONENTS, INSERT LEADS THROUGH PLATED THRU-HOLES.
2. CAUTION WHEN APPLYING HEAT AND SOLDER TO LEAD AND FOIL.
3. CLEAN AND INSPECT AS PER SPEC, S676.
4. FOR ELECTRICAL COMPONENT PART NUMBERS REFER TO NPL A4894.
5. USE SYMBOL NUMBERS FOR ASSEMBLY REFERENCE.
6. PC # ASSY NO. NOT TO BE STAMPED FROM ARTWORK BUT INDIVIDUALLY.

QTY. REQ.	ITEM	PART NO.	DESCRIPTION	SYMBOL
A/R 9	BS100		SOLDER, TIN ALLOY	
A/R 8	PX830-18-1		INSULATION SLEEVING, SHRINK	
A/R 7	RG 174/G		CABLE, RF	
11	6	NTH0440BN6	NUT PLAIN HEXAGONAL	
11	5	LWEO4MRN	WASHER, LOCK, EXTERNAL	
11	4	FWO4HBN	WASHER, FLAT	
3	3	SCBP0440BN4	SCREW, MACHINE	
1	2	MS6004	STIFFENER, PRINTED CIRCUIT BD	
1	1	PC412	PRINTED CIRCUIT BOARD	

LIST OF MATERIAL

THE TECHNICAL MATERIEL CORP.
MAMARONECK, NEW YORK

FINAL APPROVAL	DATE
MECH. DES.	DATE
ELECT. DES.	DATE
CHECKED	DATE
DRAWN	DATE
R FORLANO	9-23-71

TOLERANCES ON	
DECIMALS	FRACTIONS
.X ± .05	± 1/64
.XX ± .01	ANGLES
.XXX ± .005	± 0° -30'

MFE-1	ASS'Y NO.
QTY / UNIT	MODEL USED ON
APPLICATION	
CODE	

NOTICE TO PERSONS RECEIVING THIS DRAWING

THE TECHNICAL MATERIEL CORPORATION claims proprietary right in the material disclosed hereon. This drawing is issued in confidence for engineering information only and may not be reproduced or used to manufacture anything shown hereon without permission from THE TECHNICAL MATERIEL CORPORATION to the user. This drawing is loaned for mutual assistance and is subject to recall at any time.

ASS'Y, PRINTED CIRCUIT BD,
RF AMPL

SIZE	CODE IDENT NO.	DWG NO.	ISSUE
D	82679	A4894	B